

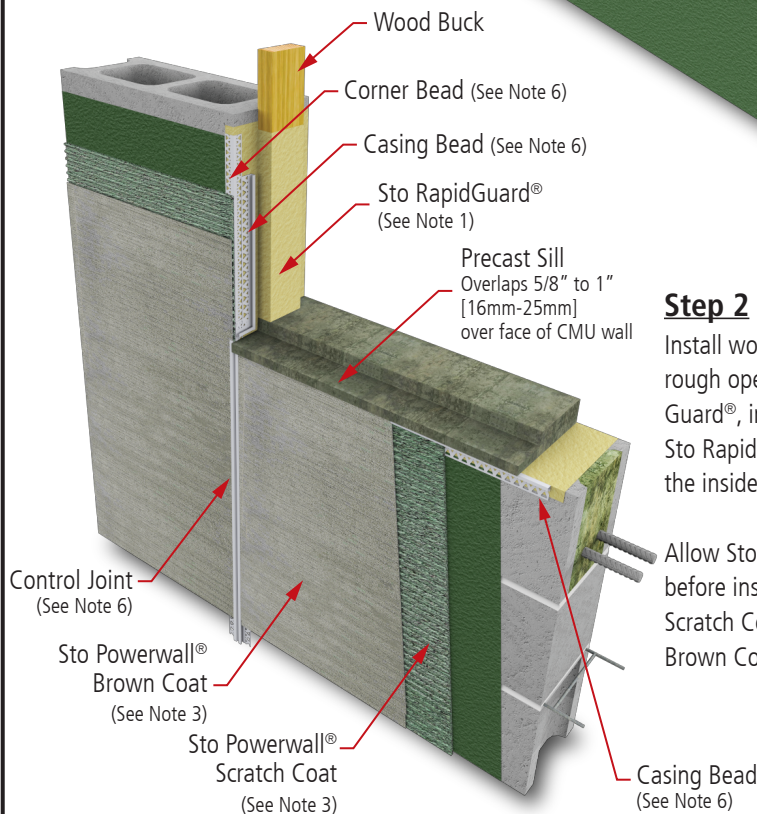
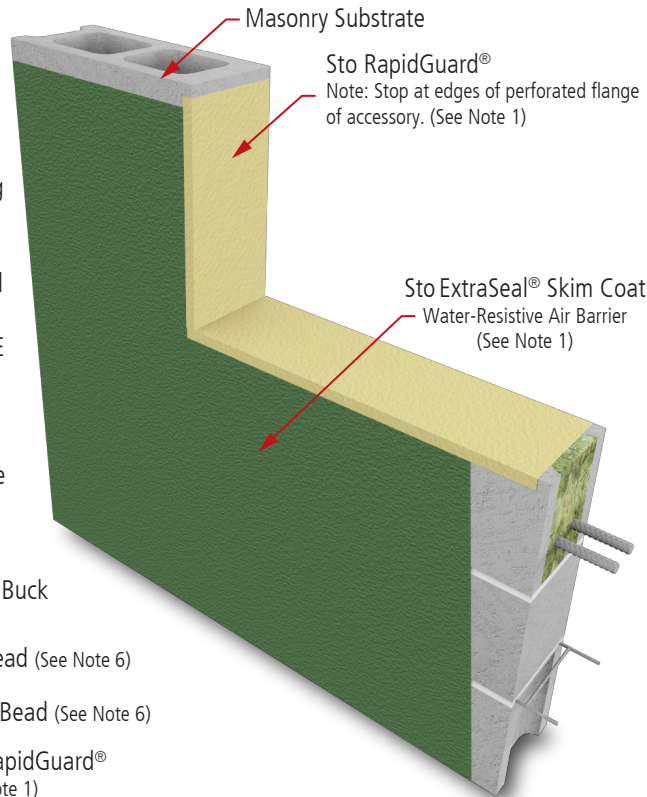
# StoPowerwall® ExtraSeal® Recessed Window - Jamb and Sill

Detail No.: 65c.29  
Date: January 2025  
Page 1 of 2

## Step 1

Apply Sto ExtraSeal® Skim Coat over face of CMU wall to produce a void and pinhole free surface.

Let surface dry completely before applying Sto RapidGuard®. Apply Sto RapidGuard® at jambs, sill and head into the rough opening, and lap onto the face of the wall at a dimension that DOES NOT EXCEED THE WIDTH OF THE PERFORATED FLANGE OF ACCESSORIES that will surround the opening. Treat entire rough opening surface and overlap onto face all the way around to produce a void and pinhole free surface. Let surface dry completely before installing the precast sill.



## Step 2

Install wood buck at jamb and head of rough opening and coat with Sto RapidGuard®, in order to tie in with the existing Sto RapidGuard® previously installed onto the inside face of the CMU wall.

Allow Sto RapidGuard® to dry completely before installing accessories, Sto ExtraSeal® Scratch Coat, and StoPowerwall® Stucco Brown Coat.

## Notes:

1. Refer to StoGuard Product Use Chart (Table 1.1) for StoGuard detail components; joint treatment, rough opening protection, backing for masonry anchors, or transitions to dissimilar materials, joints and seams in construction.
2. Refer to General Notes for specific information and design guidance on wall assembly components.
3. Stucco brown coat material in compliance with ASTM C926 and manufactured or listed by Sto Corp.
4. The complete installation of window or mechanical equipment must include an air seal between the object and the StoGuard protection, inbound of the outer perimeter weather seal.
5. Refer to applicable Sto guide specifications, product bulletins, Tech Hotlines, and other Sto guide details for additional information.
6. Components not identified as Sto are furnished by other manufacturers and are not necessarily installed by trades who install the Sto products. Refer to project specific contract documents.

## ATTENTION

Property of Sto Corp. All Rights Reserved.

Sto products are intended for use by qualified professional contractors, not consumers, as a component of a larger construction assembly as specified by a qualified design professional, general contractor or builder. They should be installed in accordance with those specifications and Sto's instructions. Sto Corp. disclaims all, and assumes no, liability for on-site inspections, for its products applied improperly, or by unqualified persons or entities, or as part of an improperly designed or constructed building, for the nonperformance of adjacent building components or assemblies, or for other construction activities beyond Sto's control. Improper use of Sto products or use as part of an improperly designed or constructed larger assembly or building may result in serious damage to Sto products, and to the structure of the building or its components.

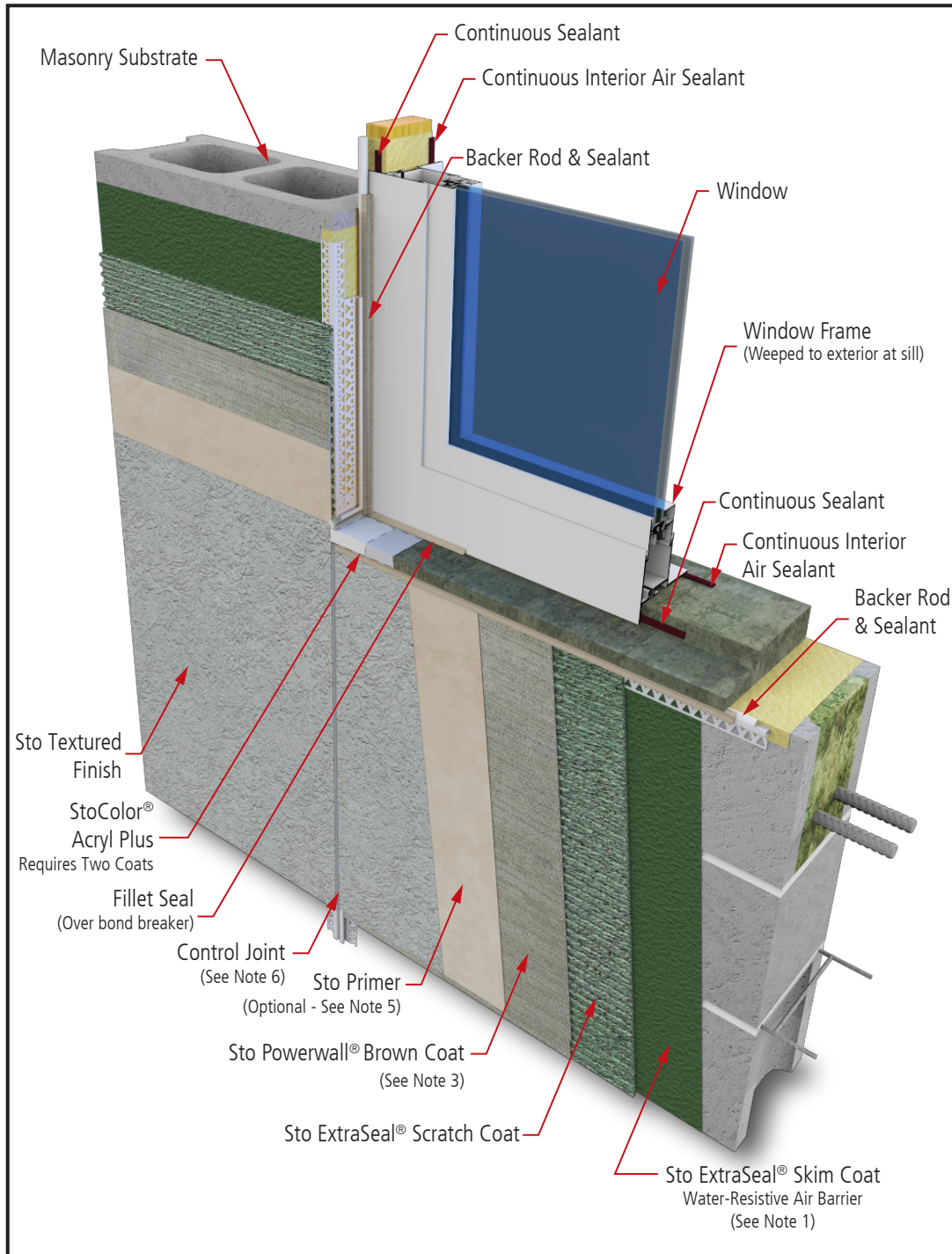
STO CORP. DISCLAIMS ALL WARRANTIES EXPRESSED OR IMPLIED EXCEPT FOR EXPLICIT LIMITED WRITTEN WARRANTIES ISSUED TO AND ACCEPTED BY BUILDING OWNERS IN ACCORDANCE WITH STO'S WARRANTY PROGRAMS WHICH ARE SUBJECT TO CHANGE FROM TIME TO TIME. For the fullest, most current information on proper application, clean-up, mixing and other specifications and warranties, cautions and disclaimers, please refer to the Sto Corp. website, [www.stocorp.com](http://www.stocorp.com).

[www.stocorp.com](http://www.stocorp.com)



# StoPowerwall® ExtraSeal® Recessed Window - Jamb and Sill

Detail No.: 65c.29  
Date: January 2025  
Page 2 of 2



## Notes:

1. Refer to StoGuard Product Use Chart (Table 1.1) for StoGuard detail components; joint treatment, rough opening protection, backing for masonry anchors, or transitions to dissimilar materials, joints and seams in construction.
2. Refer to General Notes for specific information and design guidance on wall assembly components.
3. Stucco brown coat material in compliance with ASTM C926 and manufactured or listed by Sto Corp.
4. The complete installation of window or mechanical equipment must include an air seal between the object and the StoGuard protection, inbound of the outer perimeter weather seal.
5. Sto Primer is required for Sto Specialty Finishes such as Sto GraniTex, StoSignature Brick, and others. Refer to specific Sto finish product bulletins.
6. Refer to applicable Sto guide specifications, product bulletins, Tech Hotlines, and other Sto guide details for additional information.
7. Components not identified as Sto are furnished by other manufacturers and are not necessarily installed by trades who install the Sto products. Refer to project specific contract documents.

## ATTENTION

Property of Sto Corp. All Rights Reserved.

Sto products are intended for use by qualified professional contractors, not consumers, as a component of a larger construction assembly as specified by a qualified design professional, general contractor or builder. They should be installed in accordance with those specifications and Sto's instructions. Sto Corp. disclaims all, and assumes no, liability for on-site inspections, for its products applied improperly, or by unqualified persons or entities, or as part of an improperly designed or constructed building, for the nonperformance of adjacent building components or assemblies, or for other construction activities beyond Sto's control. Improper use of Sto products or use as part of an improperly designed or constructed larger assembly or building may result in serious damage to Sto products, and to the structure of the building or its components.

STO CORP. DISCLAIMS ALL WARRANTIES EXPRESSED OR IMPLIED EXCEPT FOR EXPLICIT LIMITED WRITTEN WARRANTIES ISSUED TO AND ACCEPTED BY BUILDING OWNERS IN ACCORDANCE WITH STO'S WARRANTY PROGRAMS WHICH ARE SUBJECT TO CHANGE FROM TIME TO TIME. For the fullest, most current information on proper application, clean-up, mixing and other specifications and warranties, cautions and disclaimers, please refer to the Sto Corp. website, [www.stocorp.com](http://www.stocorp.com).

[www.stocorp.com](http://www.stocorp.com)

