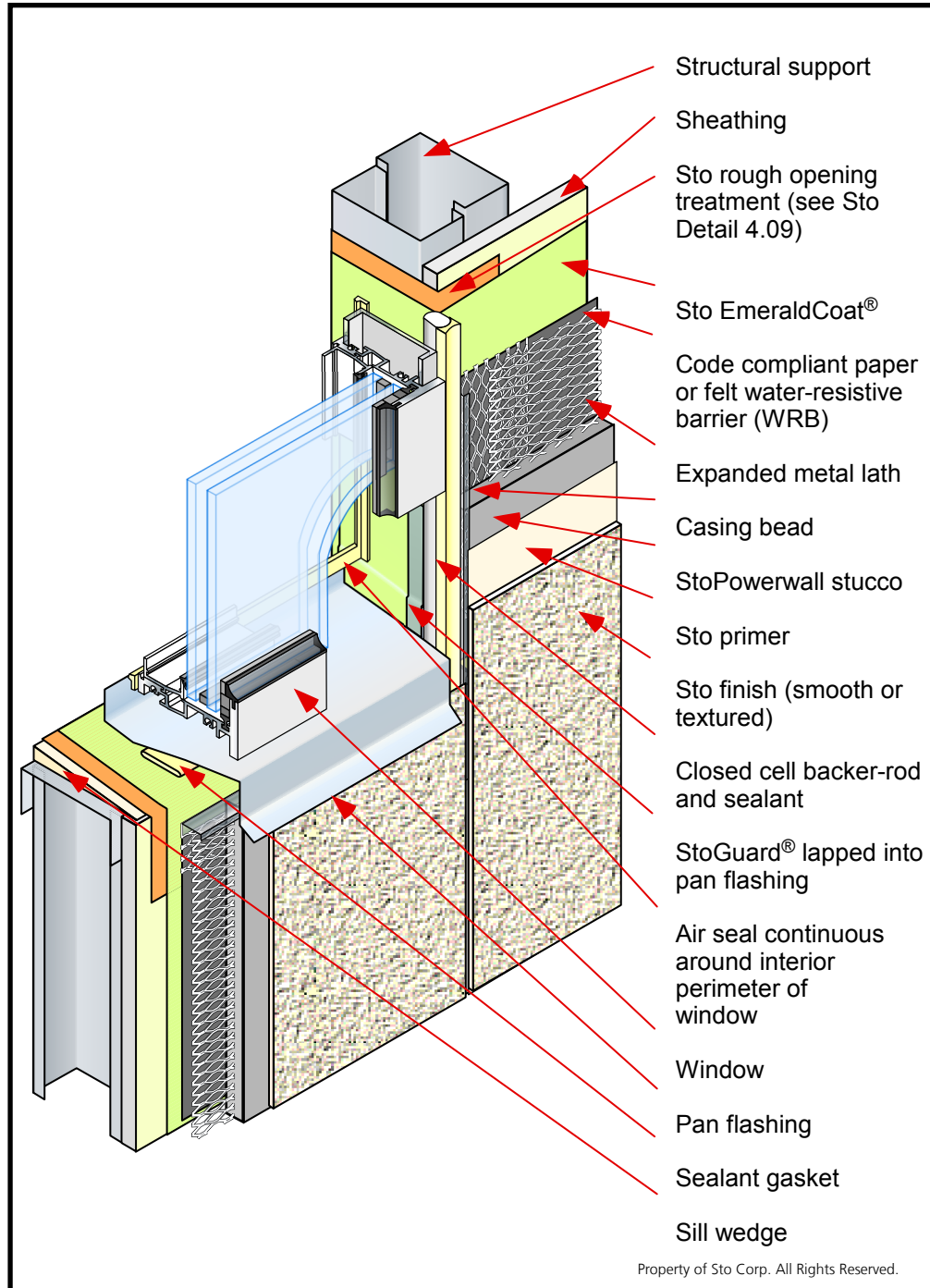




# StoPowerwall® Commercial Window Sill

Detail No.: 4.22

Date: December 2015



## Notes:

- 1] Provide a mock-up installation and test using materials and substrates associated with the project.
- 2] Prepare opening prior to the installation of the window. Coordinate installation with other associated substrates.
- 3] Provide StoGuard® air/moisture barrier and other associated trim and accessories as noted in Sto detail 4.09.
- 4] Provide pan flashing at sill to drain water to the exterior.
- 5] In cold climates this detail will provide little insulation around the pan flashing. The designer should specify a pan design that will provide a thermal break.
- 6] Provide continuous air barrier connection around perimeter of the window to reduce leaking, condensation related to air movement, sound, and insect intrusion.

IMPORTANT: Components not identified as Sto are furnished by other manufacturers and are not necessarily installed by trades who install the Sto products. Refer to project specific contract documents.

## Attention

Sto products are intended for use by qualified professional contractors, not consumers, as a component of a larger construction assembly as specified by a qualified design professional, general contractor or builder. They should be installed in accordance with those specifications and Sto's instructions. Sto Corp. disclaims all, and assumes no, liability for on-site inspections, for its products applied improperly, or by unqualified persons or entities, or as part of an improperly designed or constructed building, for the nonperformance of adjacent building components or assemblies, or for other construction activities beyond Sto's control. Improper use of Sto products or use as part of an improperly designed or constructed larger assembly or building may result in serious damage to Sto products, and to the structure of the building or its components. **STO CORP. DISCLAIMS ALL WARRANTIES EXPRESS OR IMPLIED EXCEPT FOR EXPLICIT LIMITED WRITTEN WARRANTIES ISSUED TO AND ACCEPTED BY BUILDING OWNERS IN ACCORDANCE WITH STO'S WARRANTY PROGRAMS WHICH ARE SUBJECT TO CHANGE FROM TIME TO TIME.** For the fullest, most current information on proper application, clean-up, mixing and other specifications and warranties, cautions and disclaimers, please refer to the Sto Corp. website, [www.stocorp.com](http://www.stocorp.com).

[www.stocorp.com](http://www.stocorp.com)