

Detail No.: **51.61.01**

Date: **March 2022**

Page: **1 of 2**

Notes:

1. StoPanel Swisspearl® ci is a lightweight energy efficient pre-fabricated exterior wall panel with continuous air and moisture barrier, sub-construction, mineral wool insulation and multiple aesthetic options using high-quality fiber cement panels by Swisspearl®.

2. Mineral Wool Insulation:
Minimum 4lb/ft³ density
Minimum 2" thick
Attach with impaling pins

3. Sub-construction: StoVentro™ Brackets set in wet Sto RapidGuard®. StoVentro™ T-Profiles are attached to the StoVentro™ brackets using StoVentro™ sub-construction screws. Add dab of Sto RapidGuard® over bracket fastener screw heads.

4. Owens Corning® Thermafiber® CI-C SC18 Mineral Wool Insulation Perimeter, wrapped in Sto BTS Plus, Sto Mesh and StoGuard® Air & Water-Resistive Barrier Coating.

5. StoVentro™ Sub-construction, at Swisspearl panel joints, can be darkened with compatible aerosolized paint.

6. Sto Thermal Blocking Element used under StoVentro™ Sub-construction brackets if defined by thermal requirements.

7. Components not identified as Sto are furnished by other manufacturers and are not necessarily installed by trades who install the Sto products. Refer to project specific contract documents.

ATTENTION

Property of Sto Corp. All Rights Reserved.

Sto products are intended for use by qualified professional contractors, not consumers, as a component of a larger construction assembly as specified by a qualified design professional, general contractor or builder. They should be installed in accordance with those specifications and Sto's instructions. Sto Corp. disclaims all, and assumes no, liability for on-site inspections, for its products applied improperly, or by unqualified persons or entities, or as part of an improperly designed or constructed building, for the nonperformance of adjacent building components or assemblies, or for other construction activities beyond Sto's control. Improper use of Sto products or use as part of an improperly designed or constructed larger assembly or building may result in serious damage to Sto products, and to the structure of the building or its components.

STO CORP. DISCLAIMS ALL WARRANTIES EXPRESSED OR IMPLIED EXCEPT FOR EXPLICIT LIMITED WRITTEN WARRANTIES ISSUED TO AND ACCEPTED BY BUILDING OWNERS IN ACCORDANCE WITH STO'S WARRANTY PROGRAMS WHICH ARE SUBJECT TO CHANGE FROM TIME TO TIME. For the fullest, most current information on proper application, clean-up, mixing and other specifications and warranties, cautions and disclaimers, please refer to the Sto Corp. website, www.stocorp.com.

www.stopanel.com



**SWISS
pearl®**

Detail No.: **51.61.01**

Date: **March 2022**

Page: **2 of 2**

Notes:

1. StoPanel Swisspearl® ci is a lightweight energy efficient pre-fabricated exterior wall panel with continuous air and moisture barrier, sub-construction, mineral wool insulation and multiple aesthetic options using high-quality fiber cement panels by Swisspearl®.

2. Mineral Wool Insulation:
Minimum 4lb/ft³ density
Minimum 2" thick
Attach with impaling pins

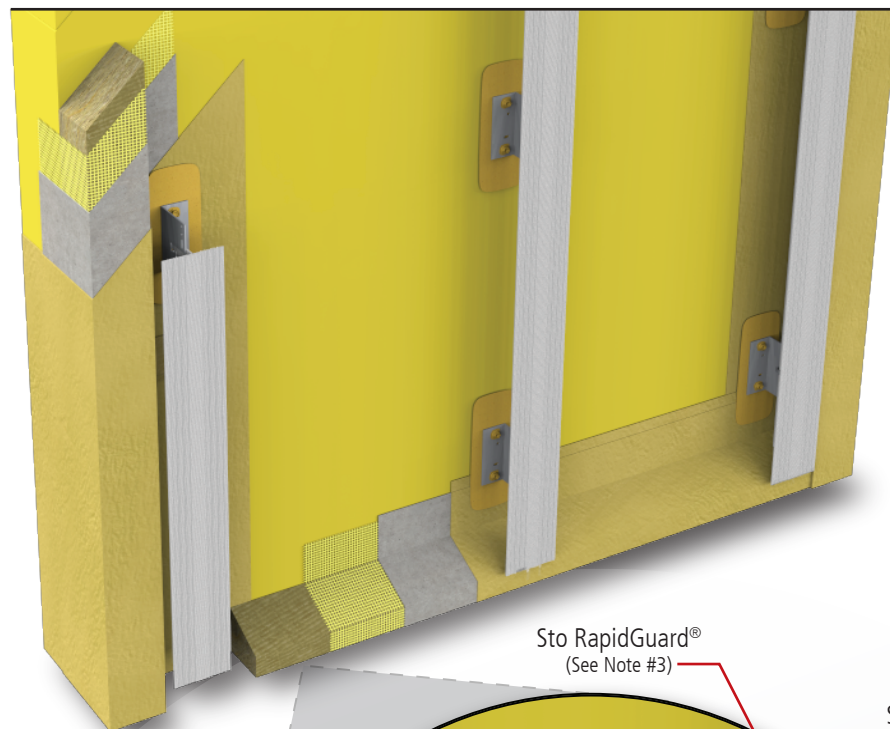
3. Sub-construction: StoVentro™ Brackets set in wet Sto RapidGuard®. StoVentro™ T-Profiles are attached to the StoVentro™ brackets using StoVentro™ sub-construction screws. Add dab of Sto RapidGuard® over bracket fastener screw heads.

4. Owens Corning® Thermafiber® CI-C SC18 Mineral Wool Insulation Perimeter, wrapped in Sto BTS Plus, Sto Mesh and StoGuard® Air & Moisture Coating.

5. StoVentro™ Sub-construction, at Swisspearl panel joints, can be darkened with compatible aerosolized paint.

6. Sto Thermal Blocking Element used under StoVentro™ Sub-construction brackets if defined by thermal requirements.

7. Components not identified as Sto are furnished by other manufacturers and are not necessarily installed by trades who install the Sto products. Refer to project specific contract documents.



Sto RapidGuard®
(See Note #3)

StoVentro™
Wall Brackets

Inset

Insulation perimeter sloped
for drainage at bottom of panel

StoVentro™ T-Profile

StoGuard® Edge Treatment
(See Note #4)

**swiss
pearl®**

ATTENTION

Property of Sto Corp. All Rights Reserved.

Sto products are intended for use by qualified professional contractors, not consumers, as a component of a larger construction assembly as specified by a qualified design professional, general contractor or builder. They should be installed in accordance with those specifications and Sto's instructions. Sto Corp. disclaims all, and assumes no, liability for on-site inspections, for its products applied improperly, or by unqualified persons or entities, or as part of an improperly designed or constructed building, for the nonperformance of adjacent building components or assemblies, or for other construction activities beyond Sto's control. Improper use of Sto products or use as part of an improperly designed or constructed larger assembly or building may result in serious damage to Sto products, and to the structure of the building or its components.

STO CORP. DISCLAIMS ALL WARRANTIES EXPRESSED OR IMPLIED EXCEPT FOR EXPLICIT LIMITED WRITTEN WARRANTIES ISSUED TO AND ACCEPTED BY BUILDING OWNERS IN ACCORDANCE WITH STO'S WARRANTY PROGRAMS WHICH ARE SUBJECT TO CHANGE FROM TIME TO TIME.
For the fullest, most current information on proper application, clean-up, mixing and other specifications and warranties, cautions and disclaimers, please refer to the Sto Corp. website, www.stocorp.com.

www.stopanel.com

