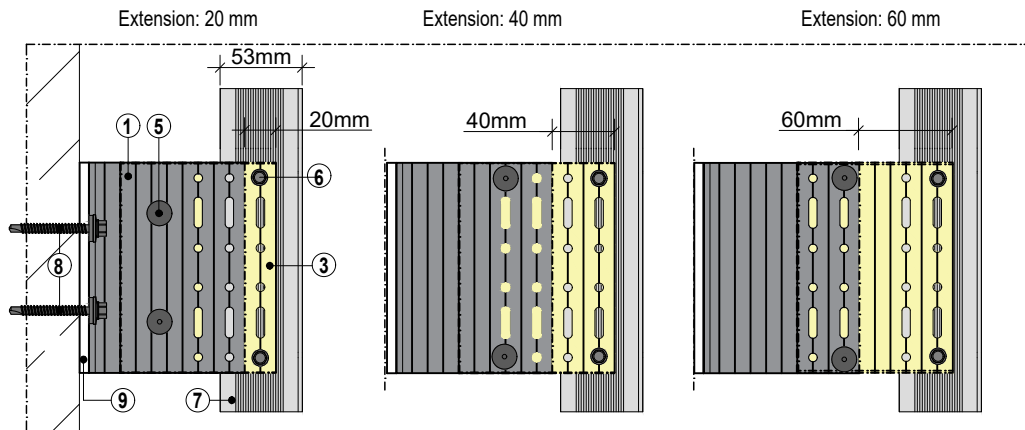


StoVentro™ Sub-Construction System

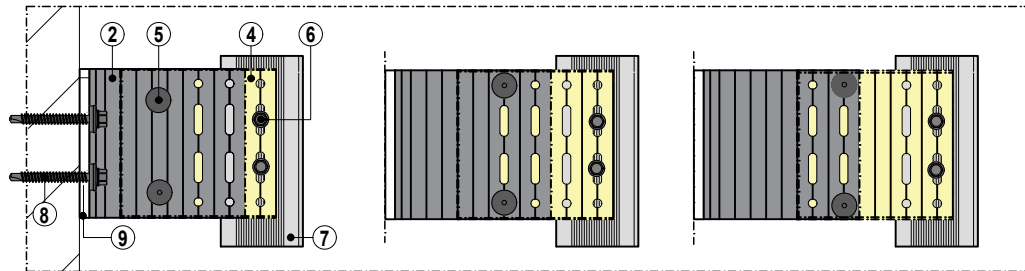
StoVentro Aluminum Bracket Extenders - Large (FP) and Small (GP),
with profile attachment locations for fixed points and sliding points
Section View

Date: February 2026

Detail No.: 90.Sc.049



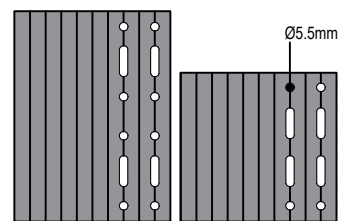
Fixed Point (FP) Fixing of StoVentro Rails to Bracket Extenders



Sliding/Gliding Point (GP) Fixing of StoVentro Rails to Bracket Extenders

Bracket Extenders are 100mm (4 in.) deep and add up to 60mm (2-3/8 in.) of depth to StoVentro Brackets.

①	StoVentro ALUM Bracket Large FP
②	StoVentro ALUM Bracket Small GP
③	StoVentro ALUM Bracket Extender Large
④	StoVentro ALUM Bracket Extender Small
⑤	Rivet 5.0x8.0mm or self-drilling screw in accordance with loading criteria, project engineering
⑥	StoVentro Screw (5.5 x 22 mm)
⑦	StoVentro-Aluminum-T-Profile
⑧	Anchoring element for bracket to structure per pre-engineering or project-specific structural calculations
⑨	StoVentro Thermal Block (Thickness: 6 mm)



Bracket Extender Large Bracket Extender Small

Note: Brackets and extenders have natural aluminum finish.
Yellow tone of extenders pictured above is solely for detail clarity.

ATTENTION

Sto products are intended for use by qualified professional contractors, not consumers, as a component of a larger construction assembly as specified by a qualified design professional, general contractor or builder. They should be installed in accordance with those specifications and Sto's instructions. Sto Corp. disclaims all, and assumes no, liability for on-site inspections, for its products applied improperly, or by unqualified persons or entities, or as part of an improperly designed or constructed building, for the nonperformance of adjacent building components or assemblies, or for other construction activities beyond Sto's control. Improper use of Sto products or use as part of an improperly designed or constructed larger assembly or building may result in serious damage to Sto products, and to the structure of the building or its components.

STO CORP. DISCLAIMS ALL WARRANTIES EXPRESSED OR IMPLIED EXCEPT FOR EXPLICIT LIMITED WRITTEN WARRANTIES ISSUED TO AND ACCEPTED BY BUILDING OWNERS IN ACCORDANCE WITH STO'S WARRANTY PROGRAMS WHICH ARE SUBJECT TO CHANGE FROM TIME TO TIME. For the fullest, most current information on proper application, clean-up, mixing and other specifications and warranties, cautions and disclaimers, please refer to the Sto Corp. website, www.stocorp.com.