



Building with conscience.

# StoShield™ SA

## Self-Adhered Membranes

### Air and Water-Resistive Barriers

Installation Guide  
Series 24s.xx | May 2025

#### Facades



StoShield™ SA membranes are versatile, primerless, self-adhered air and water resistive barriers used in exterior wall assemblies.

StoShield™ SA membranes protect against water intrusion and air leakage. The membranes are self-adhered, thus increasing the speed of application on the wall while simplifying integration with StoGuard® detail components.





# Installation Guide



## Table of Contents

Product Description and Membrane Sizes .....	3
Approved Substrates and Surface Preparation .....	4
Application Principles .....	6
Detail Components, StoGuard®, Installation Tools .....	7
Installation Instructions .....	8
Guide Details .....	9



Sto Corp.



StoGuard®

### ATTENTION

The final design of any project is the sole responsibility of the Design Professional, with considerations for compliance with local building and design codes and requirements. Sto Corp. accepts no liability for design, engineering, or workmanship of any project. The information provided herein is in addition to other technical data provided by Sto Corp. (System Bulletin, Specification, Guide Details, etc). For more information, please visit [www.stocorp.com](http://www.stocorp.com)

### Sto Corp.

3800 Camp Creek Pkwy. SW  
Bldg. 1400 • Suite 120  
Atlanta, GA 30331  
Tel: (800) 221-2397  
Fax: (404) 346-3119  
<http://www.stocorp.com>  
[helpdesk.stocorp.com](mailto:helpdesk.stocorp.com)


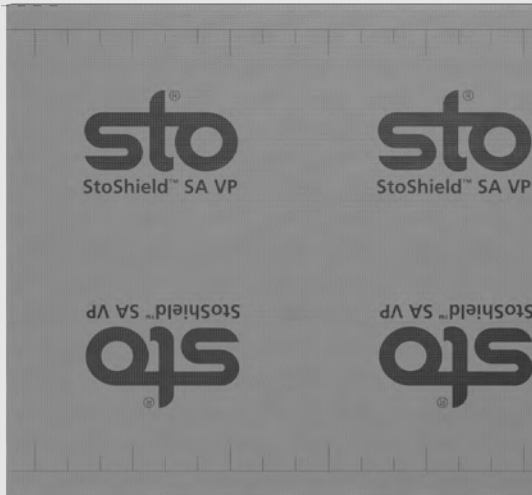




### StoShield™ SA

StoShield™ SA membranes are primerless, self-adhered Air and Water-Resistive Barriers (AWRBs) used to protect against air leakage and water intrusion in exterior wall assemblies. The membranes are available as vapor permeable and vapor non-permeable. StoShield™ SA membranes are used together with StoGuard® Detail Components to seal joints, penetrations, and rough openings as part of a comprehensive StoGuard® Air and Water-Resistive Barrier assembly.

StoShield™ SA membranes are extremely versatile with a high-tack adhesive, able to be applied to most surfaces at temperatures as low as 20°F (-6.7°C), and remain stable under high heat conditions. StoShield™ SA membranes have been rigorously tested and meet AAMA 711 requirements for adhesion strength and service temperatures, and ICC-ES AC308 requirements as Water-resistive Barriers (WRBs).

**Table 1.0 - StoShield™ SA Membranes**

Product	Product No.	Roll Size/Length	Applications
<b>StoShield™ SA VP</b> (Vapor Permeable)	81949	<b>37.5-in width</b> (0.95m) w/ split release liner  75 lineal feet (22.9m) per carton 1 roll per carton  234.4 ft² (21.78 m²) per roll	 
<b>StoShield™ SA NP</b> (Non-Permeable)	81948	<b>30-in width</b> (0.8m) w/ split release liner  75 lineal feet (22.9m) per carton 1 roll per carton  187.5 ft² (17.42 m²) per roll	 





## Approved Substrates and Surface Preparation



### **Glass-Mat Gypsum** in compliance with ASTM C1177.

Install with butt joints and fasteners flush with the surface. Surface must be structurally sound, clean, dry, and free of frost, dust, dirt, or any other bond inhibiting material, weather damage and physical damage or defects. All substrates must be in conformance with and installed in compliance with applicable building codes.

### **Exterior Grade Plywood** in compliance with PS2\*

Install with joints gapped 1/8th inch (3mm) and fasteners flush with the surface. Surface must be structurally sound, clean, dry, and free of frost, dust, dirt, or any other bond inhibiting material, weather damage and physical damage or defects. All substrates must be in conformance with and installed in compliance with applicable building codes.

\* Performance Standard (PS2) for Wood-Based Structural Use Panels.

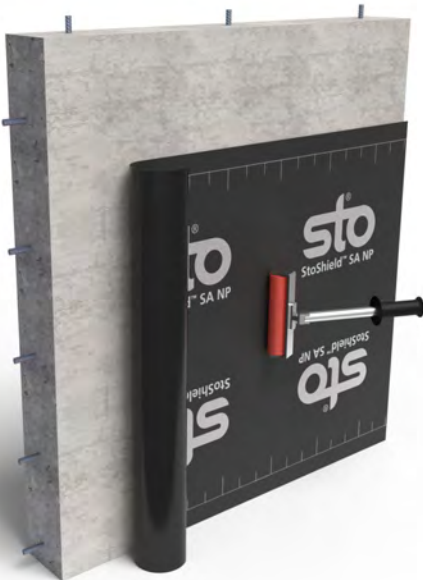
### **Exposure 1 OSB** in compliance with PS2\*

Install with joints gapped 1/8th inch (3mm) and fasteners flush with the surface. Surface must be structurally sound, clean, dry, and free of frost, dust, dirt, or any other bond inhibiting material, weather damage and physical damage or defects. All substrates must be in conformance with and installed in compliance with applicable building codes.

\* Performance Standard (PS2) for Wood-Based Structural Use Panels.



## Approved Substrates and Surface Preparation (cont'd)



### Cementitious Sheathing in compliance with ASTM C 1325, Type A:

Install in conformance with manufacturer's written instructions. Fasteners must be flush with the surface. Surface must be structurally sound, clean, dry and free of frost, dirt, dust, grease, efflorescence or any other bond-inhibiting material, weather damage, and physical damage or defects. All substrates must be in conformance with and installed in compliance with applicable building codes.

### Code Compliant Concrete

Concrete must be fully cured, structurally sound, clean, dry and free of frost, dust, dirt, grease, efflorescence, form release, curing compounds, paints or coatings, salts, laitance or any other bond-inhibiting material, weather damage and physical damage or defects. Concrete must be free of surface defects such as bugholes or honeycombs. Form ties must be removed. Repair or level prepared surfaces as needed with Sto Leveler and Skim Coat or Sto Wall Leveler and Patch.

### Code Compliant Concrete Masonry

Construct concrete masonry with flush joints and remove projecting mortar so it is even with the plane of the masonry units. Concrete masonry must be fully cured, structurally sound, clean, dry, and free of frost, dirt, dust, grease, efflorescence, paints or coatings, salts, laitance or any other bond-inhibiting material, weather damage and physical damage or defects.



## Substrate Preparation

Substrate must be clean, dry, and free of frost, dust, dirt, or any other bond-inhibiting material.

## Membrane Placement

Place the membrane in courses starting from the bottom of the wall. For optimal installation, pre-cut pieces and pre-mark the location for the upper membrane piece to overlap the lower piece a minimum of 2" (51mm). Working from top to bottom of the membrane piece, remove the release liner from the membrane, placing it by hand, then use a hard rubber roller to achieve a smooth and wrinkle-free surface.

## Rolling

A required process for membrane installation is to apply firm and uniform pressure by rolling with a hard rubber roller after placement. The rolling increases contact of the pressure-sensitive adhesive with the substrate and helps to produce a smooth and wrinkle-free surface.

Alignment Marks

## Overlapping

A key to proper installation of StoShield™ SA membranes is shingle lapping with a minimum of 2" (51mm) overlap on all horizontal membrane to membrane laps.

2" Minimum  
Overlap  
(51mm)

Pressure Roller  
(e.g. J-Roller)

Release Liner  
with split-back

## UV Exposure



**1 year**  
StoShield™ SA NP  
**6 months**  
StoShield™ SA VP

## Application Temperature Range

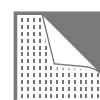


**+20°F**  
(-6.7°C)  
Minimum



**+110°F**  
(43.3°C)  
Maximum

## Installation Features



**Primerless**  
Self-adhered high-tack  
adhesive membrane



**ROLL  
AFTER  
APPLYING**



## StoGuard® Detail Component Products



**Sto RapidGuard®** - One component air barrier and waterproof material used to protect rough openings, sheathing joints, seams, cracks, penetrations, and other transitions in above grade wall construction.



**StoGuard® Conformable Membrane** - A versatile, easy to install membrane that simplifies detailing of transitions for air barrier continuity in Sto proprietary wall systems and other wall assemblies.

**Table 1.1 - StoGuard® Air & Water-Resistive Barrier Detail Components**

StoGuard® Detail Component	Sheathing Joints and Corners	Flashing and Rough Opening Protection	Penetrations	Static Joints and Seams	Dynamic Joints
Sto RapidGuard®	✓ *	✓	✓	✓	
StoGuard® Conformable Membrane	✓ *	✓	✓	✓	✓

\* Sheathing joint treatment generally not required when using StoShield™ SA membranes.

## Recommended Tools for Installation



**Pressure Roller** - Required for proper and uniform application of pressure to the membrane.



**Tape Measure** - Use to pre-measure membrane pieces and installation alignment marks for rapid installation.



**Levels** - Long I-Beam or Laser Levels for precise measurements for larger surface area installation.



**Chalk Box** - Used to create alignment marks, especially larger surface areas, for membrane installation.



**Utility Knife** - Scissors or Scoring knife used for cutting membrane pieces.



**Safety Gear** - Proper Personal Protection Equipment (PPE)



## Installation Instructions

Apply only when surface and ambient temperatures are between 20°F (and rising) and 110°F (-6.7°C and 43.3°C). Apply only to structurally sound, clean, dry surfaces, free of frost, surface contamination, weather damage, and physical damage or defects. Do not use below grade or on surfaces subject to in-service water immersion or as a roofing membrane. Verify adhesion of sealants with lab or field tests if StoShield™ SA membranes are used as a substrate for air barrier connections formed with sealant.

1. Treat all detail and transition areas – penetrations such as pipes, scuppers and vents, rough openings, static and dynamic joints in wall construction, connections at foundation and parapet – with StoGuard® Conformable Membrane or other appropriate StoGuard® Detail component to ensure air barrier continuity. Refer to **StoGuard® Conformable Membrane Installation Guide**.
2. Follow the basic principle of shingle-lapping the membrane in courses from bottom to top of the wall. Shingle-lap minimum 2 inches (51mm) at horizontal membrane overlaps, lap minimum 3 inches (76mm) at vertical membrane overlaps, and lap minimum 3 inches (76mm) in each direction at vertical inside and outside corners. Offset vertical seams from one membrane course to the next by a minimum of 12 inches (305mm).
3. Pre-cut pieces with a scissors or a scoring knife to manageable lengths and mark the position of the top edge of the membrane on the wall with a chalk line.
4. Hold the membrane in place in alignment with the chalk line and fold the top half of the membrane back on itself to expose the top half of the split release liner.
5. Remove the top half of the split release liner from the back of the membrane. Pull from one end at a 45 degree angle and put the membrane in place on the substrate, aligning it with the marked line.
6. Press 3-inches (76mm) of the top horizontal edge into place to adhere and hold the membrane in place. Then work from top to bottom, and center to edges, toward the lower half of the membrane, pressing the membrane into place by hand, and removing all air pockets to achieve a smooth, wrinkle-free surface. Use a hard rubber roller to apply firm uniform pressure by rolling from center to edges of the top half of the membrane, again removing all air pockets to achieve a smooth, wrinkle-free surface.
7. Remove the remaining half of the split release liner, pulling from one end at a 45° degree angle. Then press by hand into place, working from top to bottom and center to edges. Use the roller to apply firm uniform pressure by rolling from center to edges of the membrane to achieve a smooth, wrinkle free surface.

**IMPORTANT:** Use StoGuard® Conformable Membrane or Sto RapidGuard® gun-applied air barrier and waterproofing to seal any fishmouths, penetrations or tears caused by bracket or accessory applications, and any other voids in the membrane.





# Guide Details

## Installation at Joints

Installation over Sheathing - Horizontal and Vertical Orientation .....	24s.00
Termination at Grade .....	24s.01
Vertical Expansion Joint .....	24s.05
Horizontal Deflection Joint at Floor Line .....	24s.06

## Installation at Corners

Inside and Outside Corner .....	24s.10
Inside Corner - Dissimilar Substrates .....	24s.11

## Installation at Openings

Rough Opening Protection .....	24s.20
--------------------------------	--------

## Installation at Balcony, Parapet and Abutments

Balcony - Floor to Wall .....	24s.43
Balcony - Wall to Ceiling .....	24s.44
Balcony - Wall to Deck .....	24s.45
Termination at Parapet .....	24s.60
Knee Wall .....	24s.64

## Installation at Penetrations

Pipe or Mechanical Penetration .....	24s.70
--------------------------------------	--------

## Common Repairs

Damage to Membrane .....	24s.90A
Fishmouths and Membrane Irregularities .....	24s.90B

# StoShield™ SA

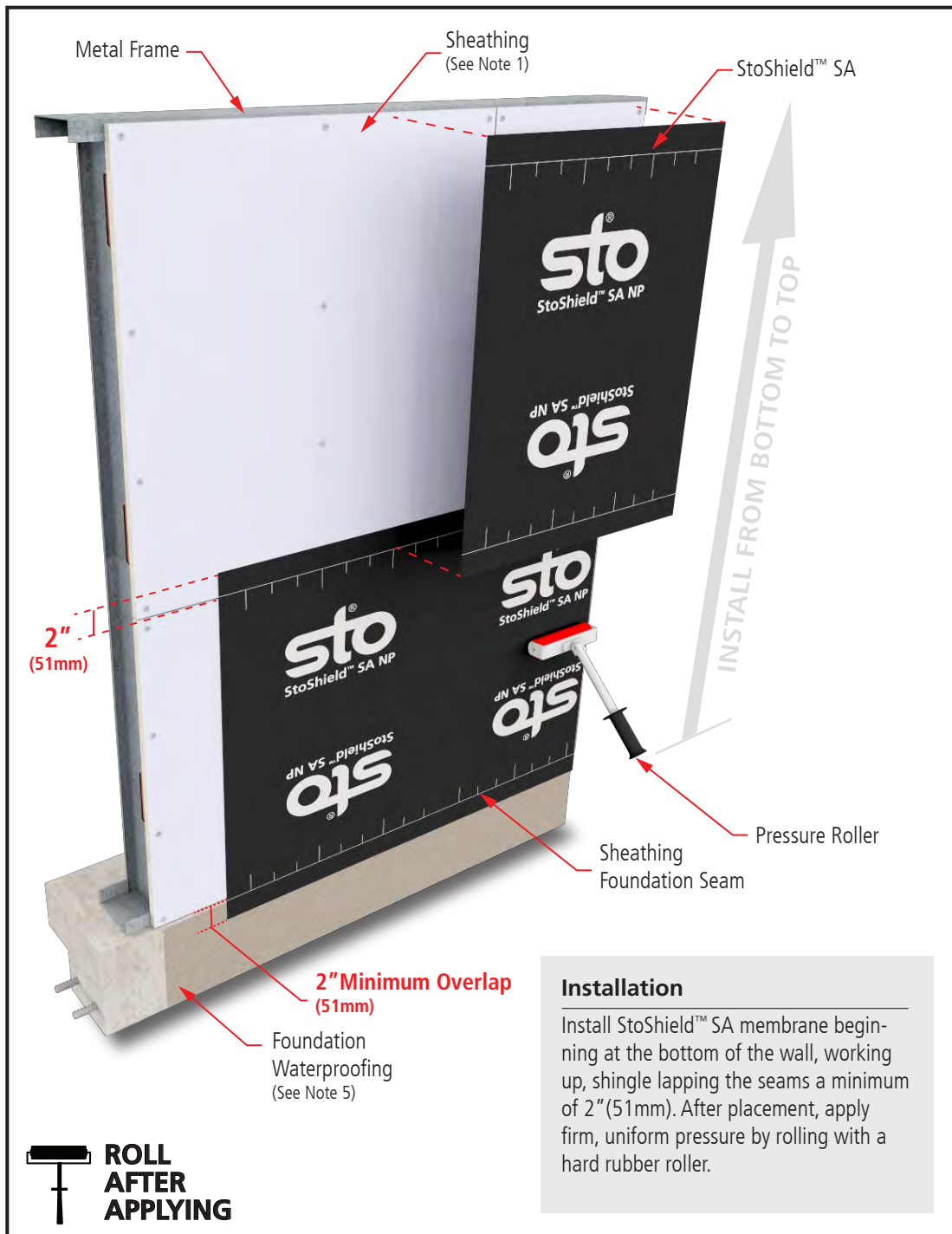
## Membrane Installation over Sheathing

### Horizontal Orientation

Detail No.: 24s.00A

Date: May 2025

Page 1 of 2



#### Notes:

1. Glass mat gypsum sheathing in compliance with ASTM C1177, Exterior Grade or Exposure 1 wood-based sheathing, or cementitious sheathing in compliance with ASTM C1325 Type A.

2. Apply StoShield™ SA membranes with minimum 2" (51mm) shingle laps at horizontal seams.

3. **IMPORTANT:** After StoShield™ SA membrane application is in place, immediately apply firm, uniform pressure using a hard rubber roller to create a wrinkle-free surface.

4. Components not identified as Sto are furnished by other manufacturers and are not necessarily installed by trades who install the Sto products. Refer to project specific contract documents.

5. Verify compatibility of StoShield™ SA membrane with foundation waterproofing via lab or field adhesion tests, or both.

#### Installation

Install StoShield™ SA membrane beginning at the bottom of the wall, working up, shingle lapping the seams a minimum of 2" (51mm). After placement, apply firm, uniform pressure by rolling with a hard rubber roller.

#### ATTENTION

Property of Sto Corp. All Rights Reserved.

[www.stocorp.com](http://www.stocorp.com)

Sto products are intended for use by qualified professional contractors, not consumers, as a component of a larger construction assembly as specified by a qualified design professional, general contractor or builder. They should be installed in accordance with those specifications and Sto's instructions. Sto Corp. disclaims all, and assumes no, liability for on-site inspections, for its products applied improperly, or by unqualified persons or entities, or as part of an improperly designed or constructed building, for the nonperformance of adjacent building components or assemblies, or for other construction activities beyond Sto's control. Improper use of Sto products or use as part of an improperly designed or constructed larger assembly or building may result in serious damage to Sto products, and to the structure of the building or its components.

STO CORP. DISCLAIMS ALL WARRANTIES EXPRESSED OR IMPLIED EXCEPT FOR EXPLICIT LIMITED WRITTEN WARRANTIES ISSUED TO AND ACCEPTED BY BUILDING OWNERS IN ACCORDANCE WITH STO'S WARRANTY PROGRAMS WHICH ARE SUBJECT TO CHANGE FROM TIME TO TIME. For the fullest, most current information on proper application, clean-up, mixing and other specifications and warranties, cautions and disclaimers, please refer to the Sto Corp. website, [www.stocorp.com](http://www.stocorp.com).



# StoShield™ SA

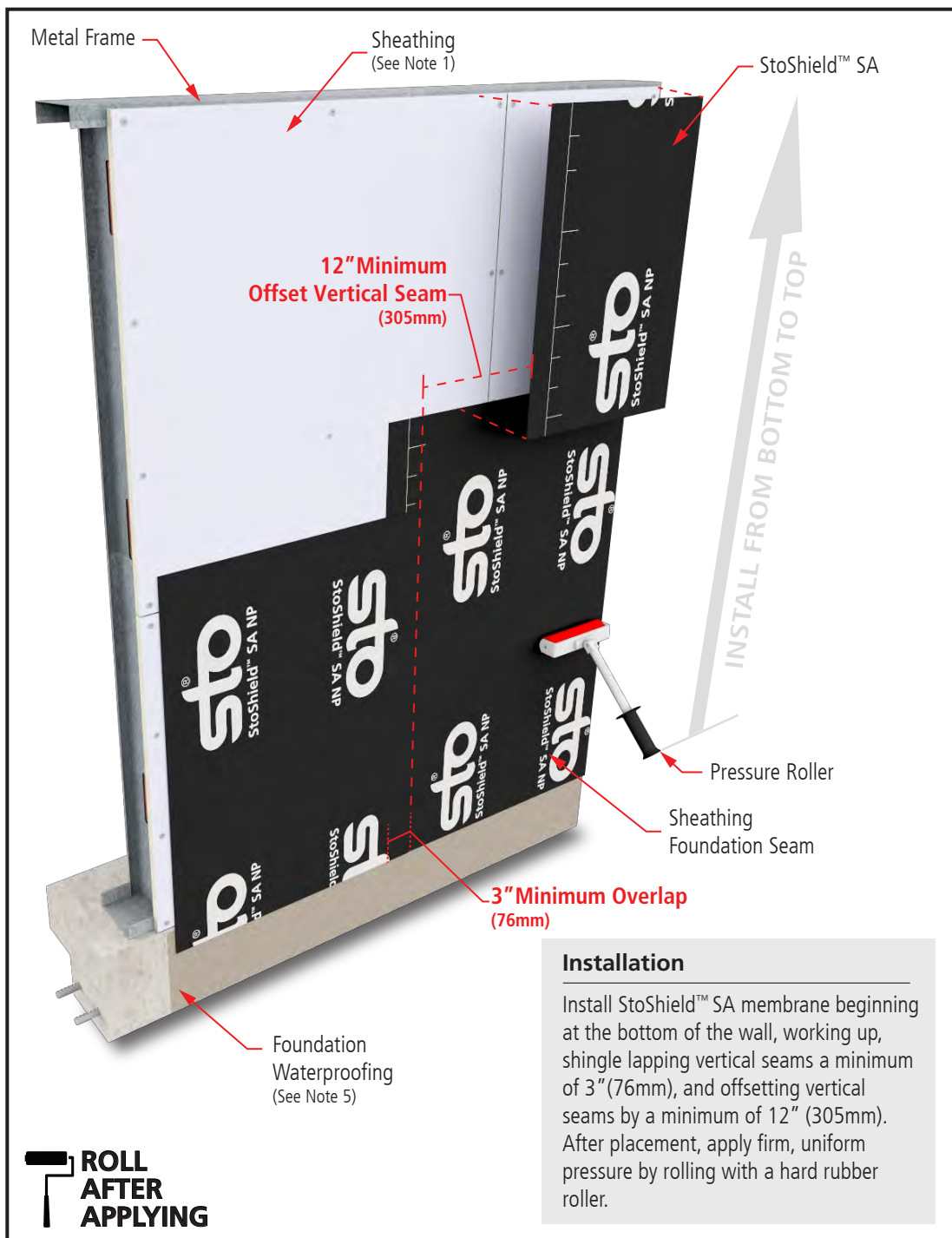
## Membrane Installation over Sheathing

### Vertical Orientation

Detail No.: 24s.00A

Date: May 2025

Page 2 of 2



#### Notes:

1. Glass mat gypsum sheathing in compliance with ASTM C1177, Exterior Grade or Exposure 1 wood-based sheathing, or cementitious sheathing in compliance with ASTM C1325 Type A.
2. Apply StoShield™ SA membranes with minimum 2" (51mm) shingle laps at horizontal seams. Lap vertical seams by a minimum of 3" (76mm). Offset vertical seams from one course to the next by a minimum of 12" (305mm).
3. **IMPORTANT:** After StoShield™ SA membrane application is in place, immediately apply firm, uniform pressure using a hard rubber roller to create a wrinkle-free surface.
4. Components not identified as Sto are furnished by other manufacturers and are not necessarily installed by trades who install the Sto products. Refer to project specific contract documents.
5. Verify compatibility of StoShield™ SA membrane with foundation waterproofing via lab or field adhesion tests, or both.

#### ATTENTION

Sto products are intended for use by qualified professional contractors, not consumers, as a component of a larger construction assembly as specified by a qualified design professional, general contractor or builder. They should be installed in accordance with those specifications and Sto's instructions. Sto Corp. disclaims all, and assumes no, liability for on-site inspections, for its products applied improperly, or by unqualified persons or entities, or as part of an improperly designed or constructed building, for the nonperformance of adjacent building components or assemblies, or for other construction activities beyond Sto's control. Improper use of Sto products or use as part of an improperly designed or constructed larger assembly or building may result in serious damage to Sto products, and to the structure of the building or its components.

STO CORP. DISCLAIMS ALL WARRANTIES EXPRESSED OR IMPLIED EXCEPT FOR EXPLICIT LIMITED WRITTEN WARRANTIES ISSUED TO AND ACCEPTED BY BUILDING OWNERS IN ACCORDANCE WITH STO'S WARRANTY PROGRAMS WHICH ARE SUBJECT TO CHANGE FROM TIME TO TIME. For the fullest, most current information on proper application, clean-up, mixing and other specifications and warranties, cautions and disclaimers, please refer to the Sto Corp. website, [www.stocorp.com](http://www.stocorp.com).

Property of Sto Corp. All Rights Reserved.

[www.stocorp.com](http://www.stocorp.com)

# StoShield™ SA

## Terminations at Grade with StoGuard® Conformable Membrane

Detail No.: 24s.01

Date: May 2025

### Notes:

1. Glass mat gypsum sheathing in compliance with ASTM C1177, Exterior Grade or Exposure 1 wood-based sheathing, or cementitious sheathing in compliance with ASTM C1325 Type A.

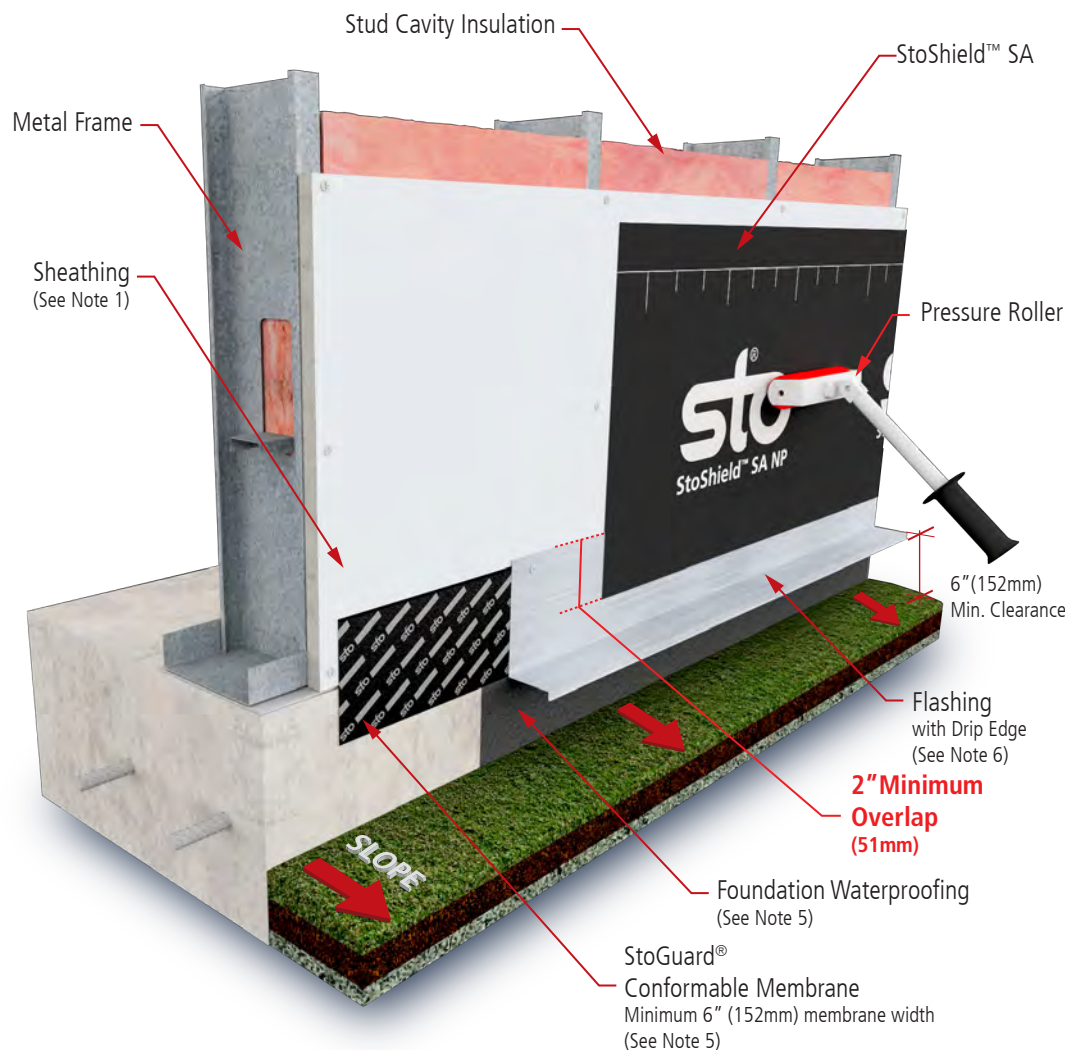
2. Apply StoShield™SA membranes with minimum 2" (51mm) shingle laps at horizontal seams.

3. **IMPORTANT:** After StoShield™SA membrane application is in place, immediately apply firm, uniform pressure using a hard rubber roller to create a wrinkle-free surface.

4. Components not identified as Sto are furnished by other manufacturers and are not necessarily installed by trades who install the Sto products. Refer to project specific contract documents.

5. Verify compatibility of StoGuard® Conformable Membrane with foundation waterproofing via lab or field adhesion tests, or both.

6. Thru-Wall Flashing type to be determined by the design professional.



### ATTENTION

Property of Sto Corp. All Rights Reserved.

[www.stocorp.com](http://www.stocorp.com)

Sto products are intended for use by qualified professional contractors, not consumers, as a component of a larger construction assembly as specified by a qualified design professional, general contractor or builder. They should be installed in accordance with those specifications and Sto's instructions. Sto Corp. disclaims all, and assumes no, liability for on-site inspections, for its products applied improperly, or by unqualified persons or entities, or as part of an improperly designed or constructed building, for the nonperformance of adjacent building components or assemblies, or for other construction activities beyond Sto's control. Improper use of Sto products or use as part of an improperly designed or constructed larger assembly or building may result in serious damage to Sto products, and to the structure of the building or its components.

STO CORP. DISCLAIMS ALL WARRANTIES EXPRESSED OR IMPLIED EXCEPT FOR EXPLICIT LIMITED WRITTEN WARRANTIES ISSUED TO AND ACCEPTED BY BUILDING OWNERS IN ACCORDANCE WITH STO'S WARRANTY PROGRAMS WHICH ARE SUBJECT TO CHANGE FROM TIME TO TIME. For the fullest, most current information on proper application, clean-up, mixing and other specifications and warranties, cautions and disclaimers, please refer to the Sto Corp. website, [www.stocorp.com](http://www.stocorp.com).

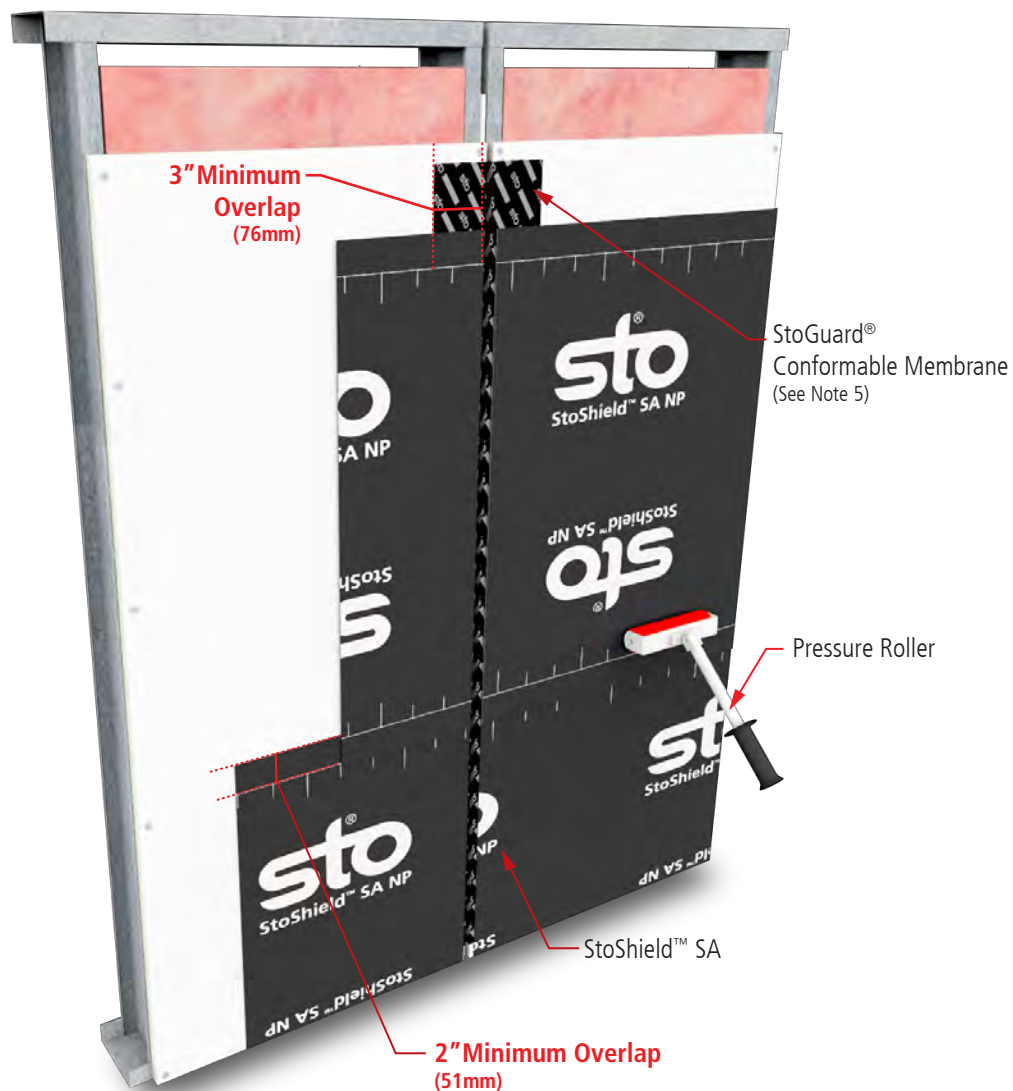




# StoShield™ SA Vertical Expansion Joint

Detail No.: 24s.05

Date: May 2025



## Notes:

1. Glass mat gypsum sheathing in compliance with ASTM C1177, Exterior Grade or Exposure 1 wood-based sheathing, or cementitious sheathing in compliance with ASTM C1325 Type A.
2. Apply StoShield™ SA membranes with minimum 2" (51mm) shingle laps at horizontal seams.
3. **IMPORTANT:** After StoShield™ SA membrane application is in place, immediately apply firm, uniform pressure using a hard rubber roller to create a wrinkle-free surface.
4. Components not identified as Sto are furnished by other manufacturers and are not necessarily installed by trades who install the Sto products. Refer to project specific contract documents.
5. Refer to Sto Detail 23s.05 in StoGuard® Conformable Membrane Installation Guide for installation and looped configuration of joint membrane material.



## ATTENTION

Property of Sto Corp. All Rights Reserved.

[www.stocorp.com](http://www.stocorp.com)

Sto products are intended for use by qualified professional contractors, not consumers, as a component of a larger construction assembly as specified by a qualified design professional, general contractor or builder. They should be installed in accordance with those specifications and Sto's instructions. Sto Corp. disclaims all, and assumes no, liability for on-site inspections, for its products applied improperly, or by unqualified persons or entities, or as part of an improperly designed or constructed building, for the nonperformance of adjacent building components or assemblies, or for other construction activities beyond Sto's control. Improper use of Sto products or use as part of an improperly designed or constructed larger assembly or building may result in serious damage to Sto products, and to the structure of the building or its components.

STO CORP. DISCLAIMS ALL WARRANTIES EXPRESSED OR IMPLIED EXCEPT FOR EXPLICIT LIMITED WRITTEN WARRANTIES ISSUED TO AND ACCEPTED BY BUILDING OWNERS IN ACCORDANCE WITH STO'S WARRANTY PROGRAMS WHICH ARE SUBJECT TO CHANGE FROM TIME TO TIME. For the fullest, most current information on proper application, clean-up, mixing and other specifications and warranties, cautions and disclaimers, please refer to the Sto Corp. website, [www.stocorp.com](http://www.stocorp.com).



# StoShield™ SA

## Horizontal Deflection Joint - Floor Line

Detail No.: 24s.06

Date: May 2025



### Notes:

1. Glass mat gypsum sheathing in compliance with ASTM C1177, Exterior Grade or Exposure 1 wood-based sheathing, or cementitious sheathing in compliance with ASTM C1325 Type A.

2. Apply StoShield™ SA membranes with minimum 2" (51mm) shingle laps at horizontal seams.

3. **IMPORTANT:** After StoShield™ SA membrane application is in place, immediately apply firm, uniform pressure using a hard rubber roller to create a wrinkle-free surface.

4. Components not identified as Sto are furnished by other manufacturers and are not necessarily installed by trades who install the Sto products. Refer to project specific contract documents.



### ATTENTION

Property of Sto Corp. All Rights Reserved.

[www.stocorp.com](http://www.stocorp.com)

Sto products are intended for use by qualified professional contractors, not consumers, as a component of a larger construction assembly as specified by a qualified design professional, general contractor or builder. They should be installed in accordance with those specifications and Sto's instructions. Sto Corp. disclaims all, and assumes no, liability for on-site inspections, for its products applied improperly, or by unqualified persons or entities, or as part of an improperly designed or constructed building, for the nonperformance of adjacent building components or assemblies, or for other construction activities beyond Sto's control. Improper use of Sto products or use as part of an improperly designed or constructed larger assembly or building may result in serious damage to Sto products, and to the structure of the building or its components.

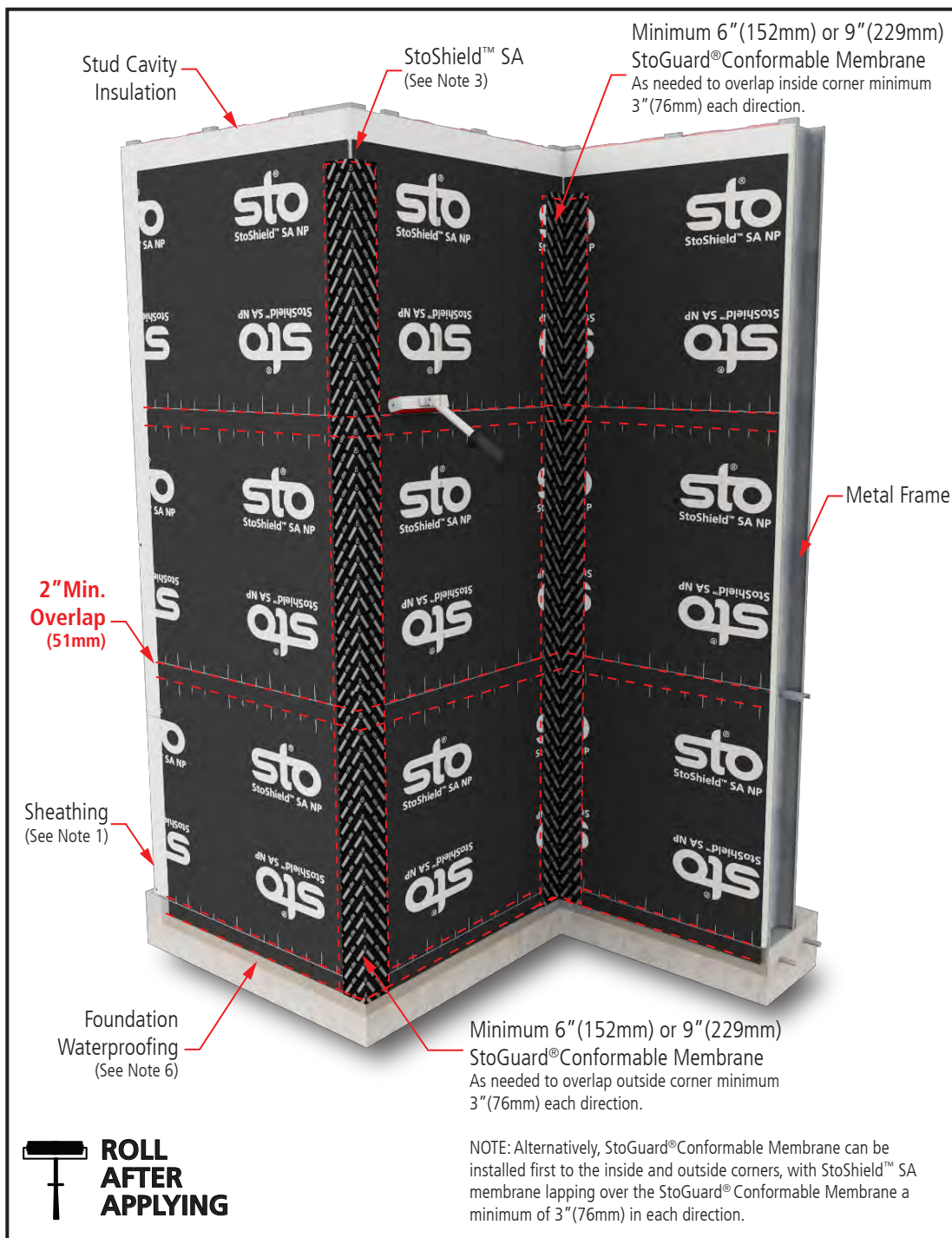
STO CORP. DISCLAIMS ALL WARRANTIES EXPRESSED OR IMPLIED EXCEPT FOR EXPLICIT LIMITED WRITTEN WARRANTIES ISSUED TO AND ACCEPTED BY BUILDING OWNERS IN ACCORDANCE WITH STO'S WARRANTY PROGRAMS WHICH ARE SUBJECT TO CHANGE FROM TIME TO TIME. For the fullest, most current information on proper application, clean-up, mixing and other specifications and warranties, cautions and disclaimers, please refer to the Sto Corp. website, [www.stocorp.com](http://www.stocorp.com).



# StoShield™ SA Inside and Outside Corner

Detail No.: 24s.10

Date: May 2025



## Notes:

1. Glass mat gypsum sheathing in compliance with ASTM C1177, Exterior Grade or Exposure 1 wood-based sheathing, or cementitious sheathing in compliance with ASTM C1325 Type A.

2. Apply StoShield™ SA membranes with minimum 2" (51mm) shingle laps at horizontal seams.

3. Apply StoGuard® Conformable Membrane centered over abutted vertical seams of StoShield™ SA membrane at inside and outside corners.

4. **IMPORTANT:** After StoShield™ SA membrane application is in place, immediately apply firm, uniform pressure using a hard rubber roller to create a wrinkle-free surface.

5. Components not identified as Sto are furnished by other manufacturers and are not necessarily installed by trades who install the Sto products. Refer to project specific contract documents.

6. Verify compatibility of StoShield™ SA membrane with foundation waterproofing via lab or field adhesion tests, or both.

## ATTENTION

Property of Sto Corp. All Rights Reserved.

[www.stocorp.com](http://www.stocorp.com)

Sto products are intended for use by qualified professional contractors, not consumers, as a component of a larger construction assembly as specified by a qualified design professional, general contractor or builder. They should be installed in accordance with those specifications and Sto's instructions. Sto Corp. disclaims all, and assumes no, liability for on-site inspections, for its products applied improperly, or by unqualified persons or entities, or as part of an improperly designed or constructed building, for the nonperformance of adjacent building components or assemblies, or for other construction activities beyond Sto's control. Improper use of Sto products or use as part of an improperly designed or constructed larger assembly or building may result in serious damage to Sto products, and to the structure of the building or its components.

STO CORP. DISCLAIMS ALL WARRANTIES EXPRESSED OR IMPLIED EXCEPT FOR EXPLICIT LIMITED WRITTEN WARRANTIES ISSUED TO AND ACCEPTED BY BUILDING OWNERS IN ACCORDANCE WITH STO'S WARRANTY PROGRAMS WHICH ARE SUBJECT TO CHANGE FROM TIME TO TIME. For the fullest, most current information on proper application, clean-up, mixing and other specifications and warranties, cautions and disclaimers, please refer to the Sto Corp. website, [www.stocorp.com](http://www.stocorp.com).

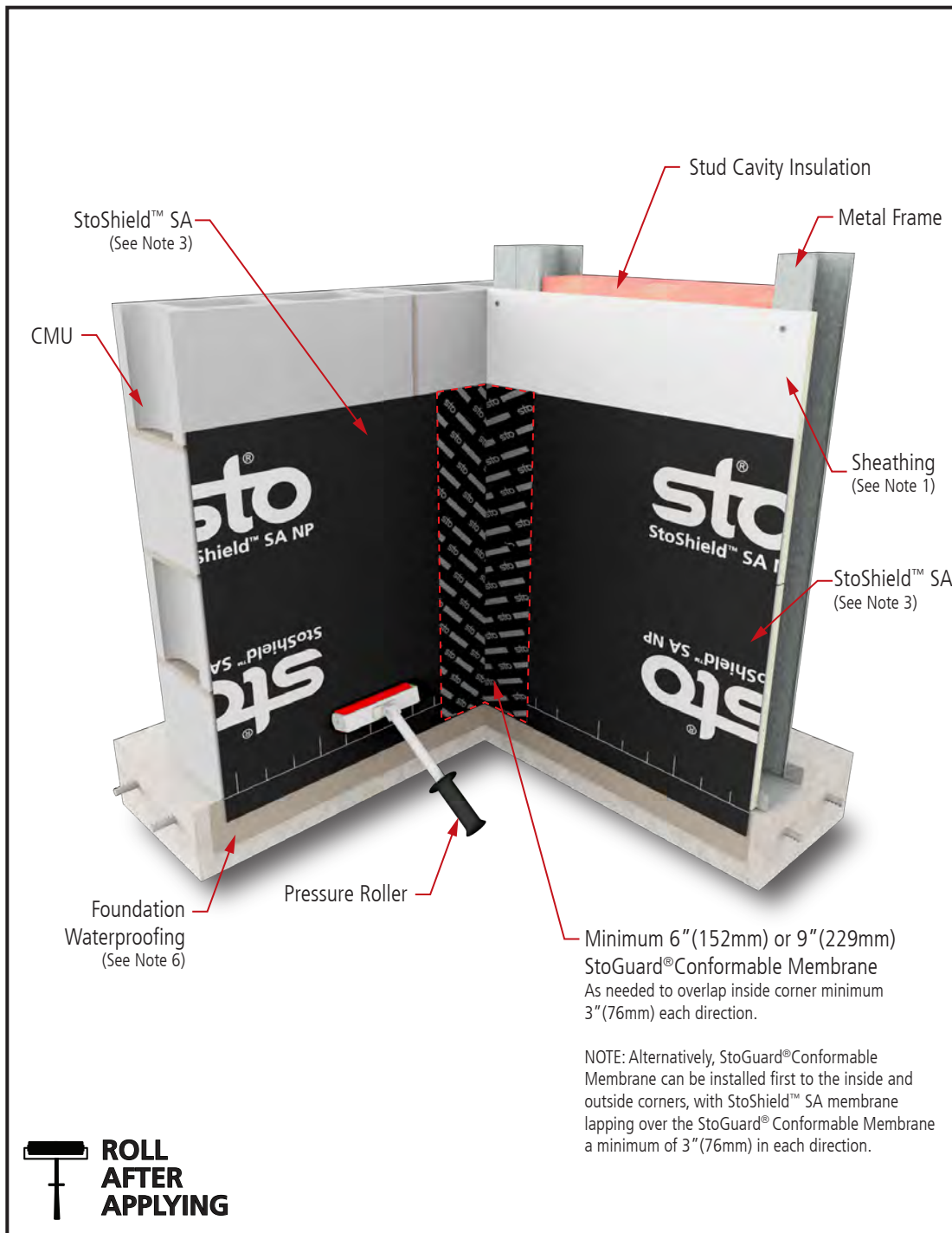


# StoShield™ SA

## Inside Corner - Connection to Dissimilar Material

Detail No.: 24s.11

Date: May 2025



### Notes:

1. Glass mat gypsum sheathing in compliance with ASTM C1177, Exterior Grade or Exposure 1 wood-based sheathing, or cementitious sheathing in compliance with ASTM C1325 Type A.

2. Apply StoShield™ SA membranes with minimum 2" (51mm) shingle laps at horizontal seams.

3. Apply StoGuard® Conformable Membrane centered over butted vertical seams of StoShield™ SA membrane at inside and outside corners.

4. **IMPORTANT:** After StoShield™ SA membrane application is in place, immediately apply firm, uniform pressure using a hard rubber roller to create a wrinkle-free surface.

5. Components not identified as Sto are furnished by other manufacturers and are not necessarily installed by trades who install the Sto products. Refer to project specific contract documents.

6. Verify compatibility of StoShield™ SA membrane with foundation waterproofing via lab or field adhesion tests, or both.

### ATTENTION

Property of Sto Corp. All Rights Reserved.

[www.stocorp.com](http://www.stocorp.com)

Sto products are intended for use by qualified professional contractors, not consumers, as a component of a larger construction assembly as specified by a qualified design professional, general contractor or builder. They should be installed in accordance with those specifications and Sto's instructions. Sto Corp. disclaims all, and assumes no, liability for on-site inspections, for its products applied improperly, or by unqualified persons or entities, or as part of an improperly designed or constructed building, for the nonperformance of adjacent building components or assemblies, or for other construction activities beyond Sto's control. Improper use of Sto products or use as part of an improperly designed or constructed larger assembly or building may result in serious damage to Sto products, and to the structure of the building or its components.

STO CORP. DISCLAIMS ALL WARRANTIES EXPRESSED OR IMPLIED EXCEPT FOR EXPLICIT LIMITED WRITTEN WARRANTIES ISSUED TO AND ACCEPTED BY BUILDING OWNERS IN ACCORDANCE WITH STO'S WARRANTY PROGRAMS WHICH ARE SUBJECT TO CHANGE FROM TIME TO TIME. For the fullest, most current information on proper application, clean-up, mixing and other specifications and warranties, cautions and disclaimers, please refer to the Sto Corp. website, [www.stocorp.com](http://www.stocorp.com).





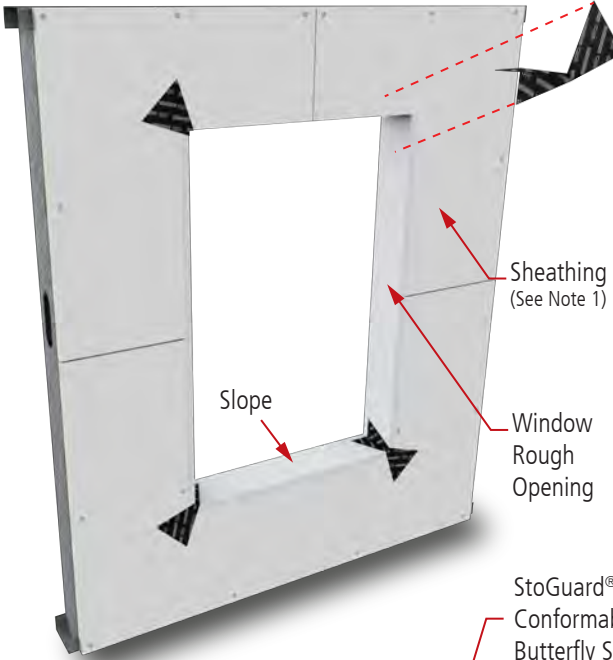
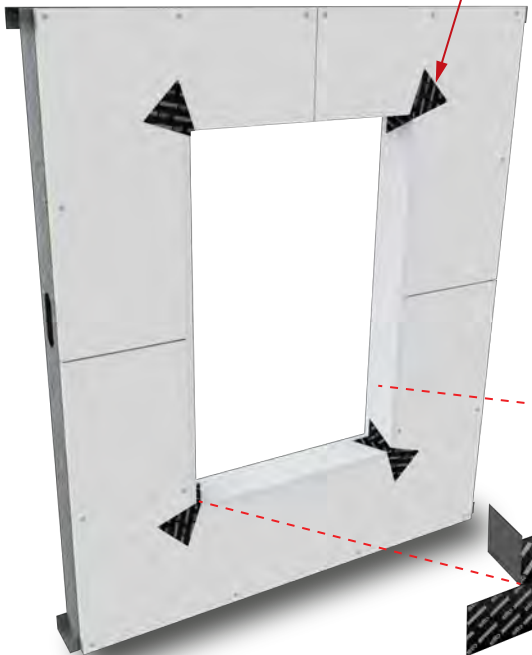
# StoShield™ SA

## Rough Opening Protection

Detail No.: 24s.20

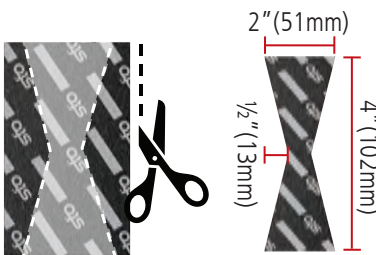
Date: May 2025

Page 1 of 4

**STEP 1**

Cut a 4" (102mm) long section of StoGuard® Conformable Membrane approximately 2" (51mm) wide to create a "butterfly" section as shown below. Apply membrane sections in diagonal strips at rough opening sill and head corners.




Butterfly Section

**STEP 2 - Sill Membrane**

Pre-measure, then cut a section of 9" (229mm) wide StoGuard® Conformable Membrane to cover the sill and extended a minimum of 4" (102mm) up the jambs. After placement, apply firm, uniform pressure by rolling with a hard rubber roller.

**Notes:**

1. Glass mat gypsum sheathing in compliance with ASTM C1177, Exterior Grade or Exposure 1 wood-based sheathing, or cementitious sheathing in compliance with ASTM C1325 Type A.
2. Use 6" (152mm) StoGuard Conformable Membrane with 2"x 4" framing and 9" (229mm) for 2"x 6" framing.
3. Components not identified as Sto are furnished by other manufacturers and are not necessarily installed by trades who install the Sto products. Refer to project specific contract documents.



**ROLL  
AFTER  
APPLYING**

### ATTENTION

Property of Sto Corp. All Rights Reserved.

Sto products are intended for use by qualified professional contractors, not consumers, as a component of a larger construction assembly as specified by a qualified design professional, general contractor or builder. They should be installed in accordance with those specifications and Sto's instructions. Sto Corp. disclaims all, and assumes no, liability for on-site inspections, for its products applied improperly, or by unqualified persons or entities, or as part of an improperly designed or constructed building, for the nonperformance of adjacent building components or assemblies, of for other construction activities beyond Sto's control. Improper use of Sto products or use as part of an improperly designed or constructed larger assembly or building may result in serious damage to Sto products, and to the structure of the building or its components.

STO CORP. DISCLAIMS ALL WARRANTIES EXPRESSED OR IMPLIED EXCEPT FOR EXPLICIT LIMITED WRITTEN WARRANTIES ISSUED TO AND ACCEPTED BY BUILDING OWNERS IN ACCORDANCE WITH STO'S WARRANTY PROGRAMS WHICH ARE SUBJECT TO CHANGE FROM TIME TO TIME. For the fullest, most current information on proper application, clean-up, mixing and other specifications and warranties, cautions and disclaimers, please refer to the Sto Corp. website, [www.stocorp.com](http://www.stocorp.com).

[www.stocorp.com](http://www.stocorp.com)



# StoShield™ SA

## Rough Opening Protection

Detail No.: 24s.20

Date: May 2025

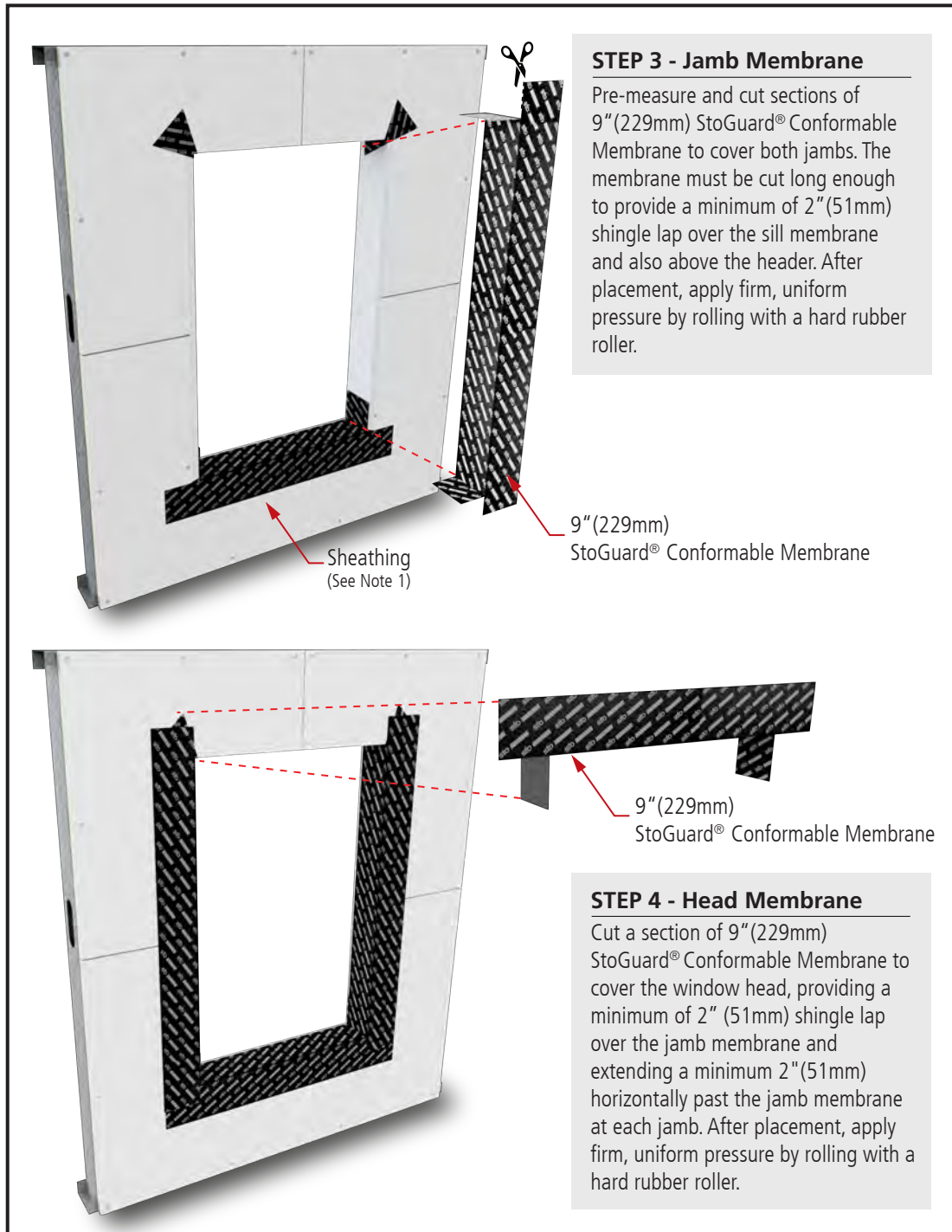
Page 2 of 4

### Notes:

1. Glass mat gypsum sheathing in compliance with ASTM C1177, Exterior Grade or Exposure 1 wood-based sheathing, or cementitious sheathing in compliance with ASTM C1325 Type A.

2. Use 6" (152mm) StoGuard Conformable Membrane with 2" x 4" framing and 9" (229mm) for 2" x 6" framing.

3. Components not identified as Sto are furnished by other manufacturers and are not necessarily installed by trades who install the Sto products. Refer to project specific contract documents.



### ATTENTION

Property of Sto Corp. All Rights Reserved.

Sto products are intended for use by qualified professional contractors, not consumers, as a component of a larger construction assembly as specified by a qualified design professional, general contractor or builder. They should be installed in accordance with those specifications and Sto's instructions. Sto Corp. disclaims all, and assumes no, liability for on-site inspections, for its products applied improperly, or by unqualified persons or entities, or as part of an improperly designed or constructed building, for the nonperformance of adjacent building components or assemblies, or for other construction activities beyond Sto's control. Improper use of Sto products or use as part of an improperly designed or constructed larger assembly or building may result in serious damage to Sto products, and to the structure of the building or its components.

STO CORP. DISCLAIMS ALL WARRANTIES EXPRESSED OR IMPLIED EXCEPT FOR EXPLICIT LIMITED WRITTEN WARRANTIES ISSUED TO AND ACCEPTED BY BUILDING OWNERS IN ACCORDANCE WITH STO'S WARRANTY PROGRAMS WHICH ARE SUBJECT TO CHANGE FROM TIME TO TIME. For the fullest, most current information on proper application, clean-up, mixing and other specifications and warranties, cautions and disclaimers, please refer to the Sto Corp. website, [www.stocorp.com](http://www.stocorp.com).

[www.stocorp.com](http://www.stocorp.com)

# StoShield™ SA Rough Opening Protection

Detail No.: 24s.20

Date: May 2025

Page 3 of 4

## Notes:

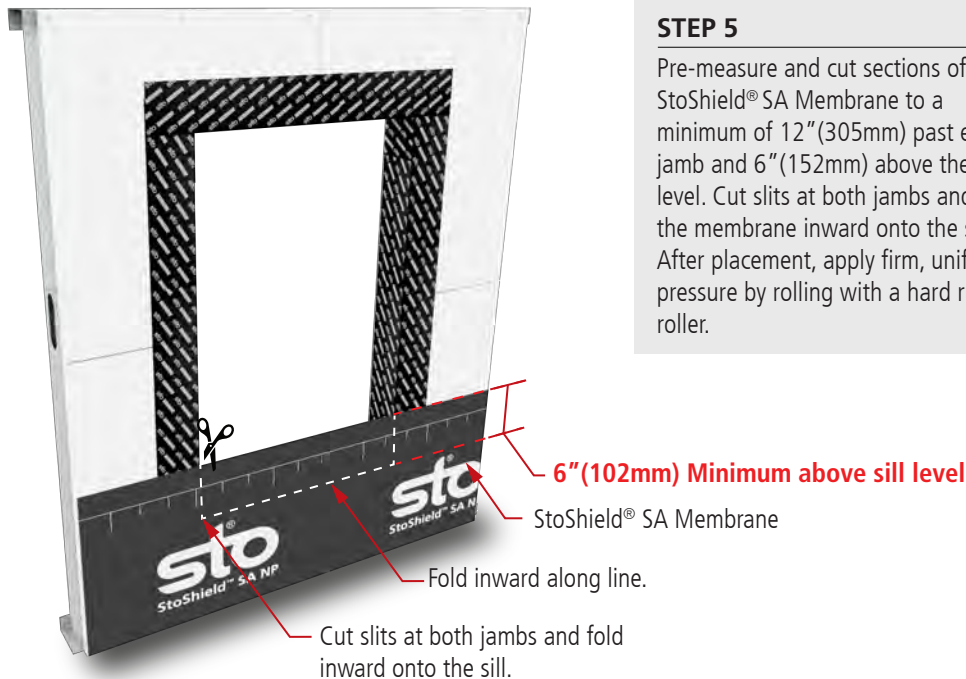
1. Glass mat gypsum sheathing in compliance with ASTM C1177, Exterior Grade or Exposure 1 wood-based sheathing, or cementitious sheathing in compliance with ASTM C1325 Type A.

2. Refer to manufacturer's installation instructions for the window or other object that occupies the opening to ensure airtightness and watertightness of the final assembly. If head flashing is used, counter flash with StoGuard® Conformable Membrane and cap seal the top edge of the membrane with Sto RapidGuard®.

3. Components not identified as Sto are furnished by other manufacturers and are not necessarily installed by trades who install the Sto products. Refer to project specific contract documents.

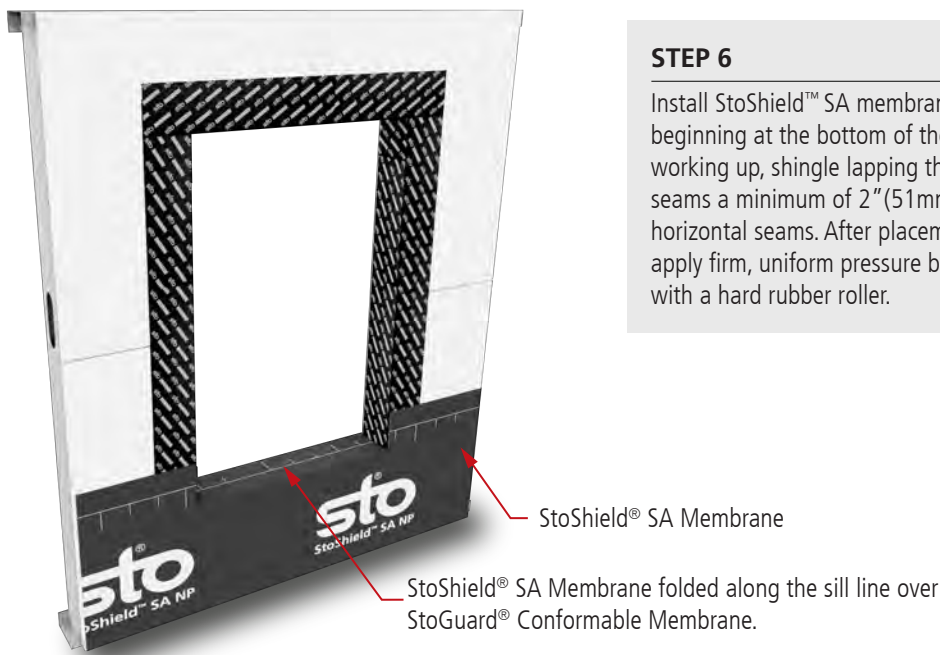
## STEP 5

Pre-measure and cut sections of StoShield® SA Membrane to a minimum of 12" (305mm) past each jamb and 6" (152mm) above the sill level. Cut slits at both jambs and fold the membrane inward onto the sill. After placement, apply firm, uniform pressure by rolling with a hard rubber roller.



## STEP 6

Install StoShield™ SA membrane beginning at the bottom of the wall, working up, shingle lapping the seams a minimum of 2" (51mm) at horizontal seams. After placement, apply firm, uniform pressure by rolling with a hard rubber roller.



## ATTENTION

Property of Sto Corp. All Rights Reserved.

Sto products are intended for use by qualified professional contractors, not consumers, as a component of a larger construction assembly as specified by a qualified design professional, general contractor or builder. They should be installed in accordance with those specifications and Sto's instructions. Sto Corp. disclaims all, and assumes no, liability for on-site inspections, for its products applied improperly, or by unqualified persons or entities, or as part of an improperly designed or constructed building, for the nonperformance of adjacent building components or assemblies, or for other construction activities beyond Sto's control. Improper use of Sto products or use as part of an improperly designed or constructed larger assembly or building may result in serious damage to Sto products, and to the structure of the building or its components.

STO CORP. DISCLAIMS ALL WARRANTIES EXPRESSED OR IMPLIED EXCEPT FOR EXPLICIT LIMITED WRITTEN WARRANTIES ISSUED TO AND ACCEPTED BY BUILDING OWNERS IN ACCORDANCE WITH STO'S WARRANTY PROGRAMS WHICH ARE SUBJECT TO CHANGE FROM TIME TO TIME. For the fullest, most current information on proper application, clean-up, mixing and other specifications and warranties, cautions and disclaimers, please refer to the Sto Corp. website, [www.stocorp.com](http://www.stocorp.com).

[www.stocorp.com](http://www.stocorp.com)



# StoShield™ SA Rough Opening Protection

Detail No.: 24s.20

Date: May 2025

Page 4 of 4

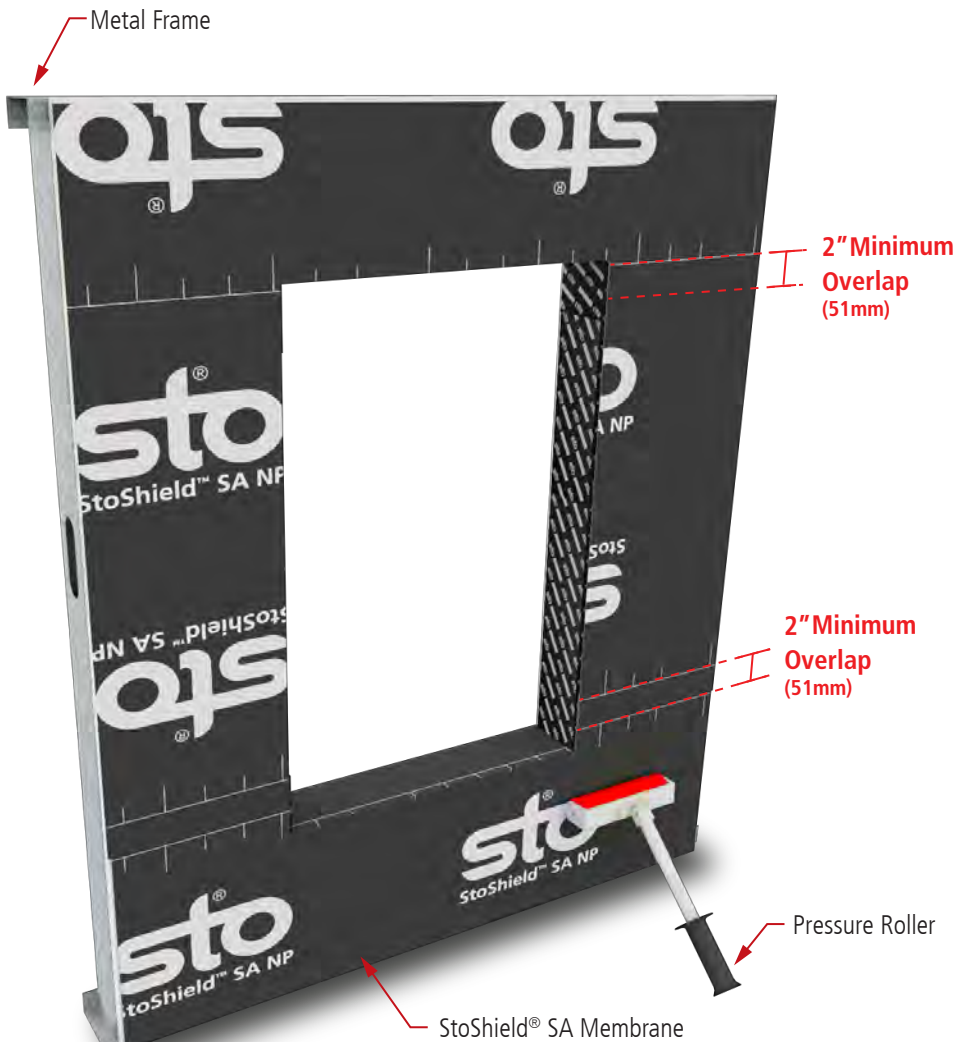
## Notes:

1. Glass mat gypsum sheathing in compliance with ASTM C1177, Exterior Grade or Exposure 1 wood-based sheathing, or cementitious sheathing in compliance with ASTM C1325 Type A.

2. Apply StoShield™ SA membranes with minimum 2" (51mm) shingle laps at horizontal seams.

3. **IMPORTANT:** After StoShield™ SA membrane application is in place, immediately apply firm, uniform pressure using a hard rubber roller to create a wrinkle-free surface.

4. Components not identified as Sto are furnished by other manufacturers and are not necessarily installed by trades who install the Sto products. Refer to project specific contract documents.



### STEP 7

Install StoShield® SA membrane beginning at the bottom of the wall, working up, shingle lapping a minimum of 2" (51mm). After placement, apply firm, uniform pressure by rolling with a hard rubber roller.



## ATTENTION

Property of Sto Corp. All Rights Reserved.

[www.stocorp.com](http://www.stocorp.com)

Sto products are intended for use by qualified professional contractors, not consumers, as a component of a larger construction assembly as specified by a qualified design professional, general contractor or builder. They should be installed in accordance with those specifications and Sto's instructions. Sto Corp. disclaims all, and assumes no, liability for on-site inspections, for its products applied improperly, or by unqualified persons or entities, or as part of an improperly designed or constructed building, for the nonperformance of adjacent building components or assemblies, or for other construction activities beyond Sto's control. Improper use of Sto products or use as part of an improperly designed or constructed larger assembly or building may result in serious damage to Sto products, and to the structure of the building or its components.

STO CORP. DISCLAIMS ALL WARRANTIES EXPRESSED OR IMPLIED EXCEPT FOR EXPLICIT LIMITED WRITTEN WARRANTIES ISSUED TO AND ACCEPTED BY BUILDING OWNERS IN ACCORDANCE WITH STO'S WARRANTY PROGRAMS WHICH ARE SUBJECT TO CHANGE FROM TIME TO TIME. For the fullest, most current information on proper application, clean-up, mixing and other specifications and warranties, cautions and disclaimers, please refer to the Sto Corp. website, [www.stocorp.com](http://www.stocorp.com).







# StoShield™ SA

## Balcony Ceiling with Deflection Joint

Detail No.: 24s.44

Date: May 2025



### Notes:

1. Glass mat gypsum sheathing in compliance with ASTM C1177, Exterior Grade or Exposure 1 wood-based sheathing, or cementitious sheathing in compliance with ASTM C1325 Type A.
2. Apply StoShield™ SA membranes with minimum 2" (51mm) shingle laps at horizontal seams.
3. **IMPORTANT:** After StoShield™ SA membrane application is in place, immediately apply firm, uniform pressure using a hard rubber roller to create a wrinkle-free surface.
4. Components not identified as Sto are furnished by other manufacturers and are not necessarily installed by trades who install the Sto products. Refer to project specific contract documents.

### ATTENTION

Property of Sto Corp. All Rights Reserved.

[www.stocorp.com](http://www.stocorp.com)

Sto products are intended for use by qualified professional contractors, not consumers, as a component of a larger construction assembly as specified by a qualified design professional, general contractor or builder. They should be installed in accordance with those specifications and Sto's instructions. Sto Corp. disclaims all, and assumes no, liability for on-site inspections, for its products applied improperly, or by unqualified persons or entities, or as part of an improperly designed or constructed building, for the nonperformance of adjacent building components or assemblies, or for other construction activities beyond Sto's control. Improper use of Sto products or use as part of an improperly designed or constructed larger assembly or building may result in serious damage to Sto products, and to the structure of the building or its components.

STO CORP. DISCLAIMS ALL WARRANTIES EXPRESSED OR IMPLIED EXCEPT FOR EXPLICIT LIMITED WRITTEN WARRANTIES ISSUED TO AND ACCEPTED BY BUILDING OWNERS IN ACCORDANCE WITH STO'S WARRANTY PROGRAMS WHICH ARE SUBJECT TO CHANGE FROM TIME TO TIME. For the fullest, most current information on proper application, clean-up, mixing and other specifications and warranties, cautions and disclaimers, please refer to the Sto Corp. website, [www.stocorp.com](http://www.stocorp.com).

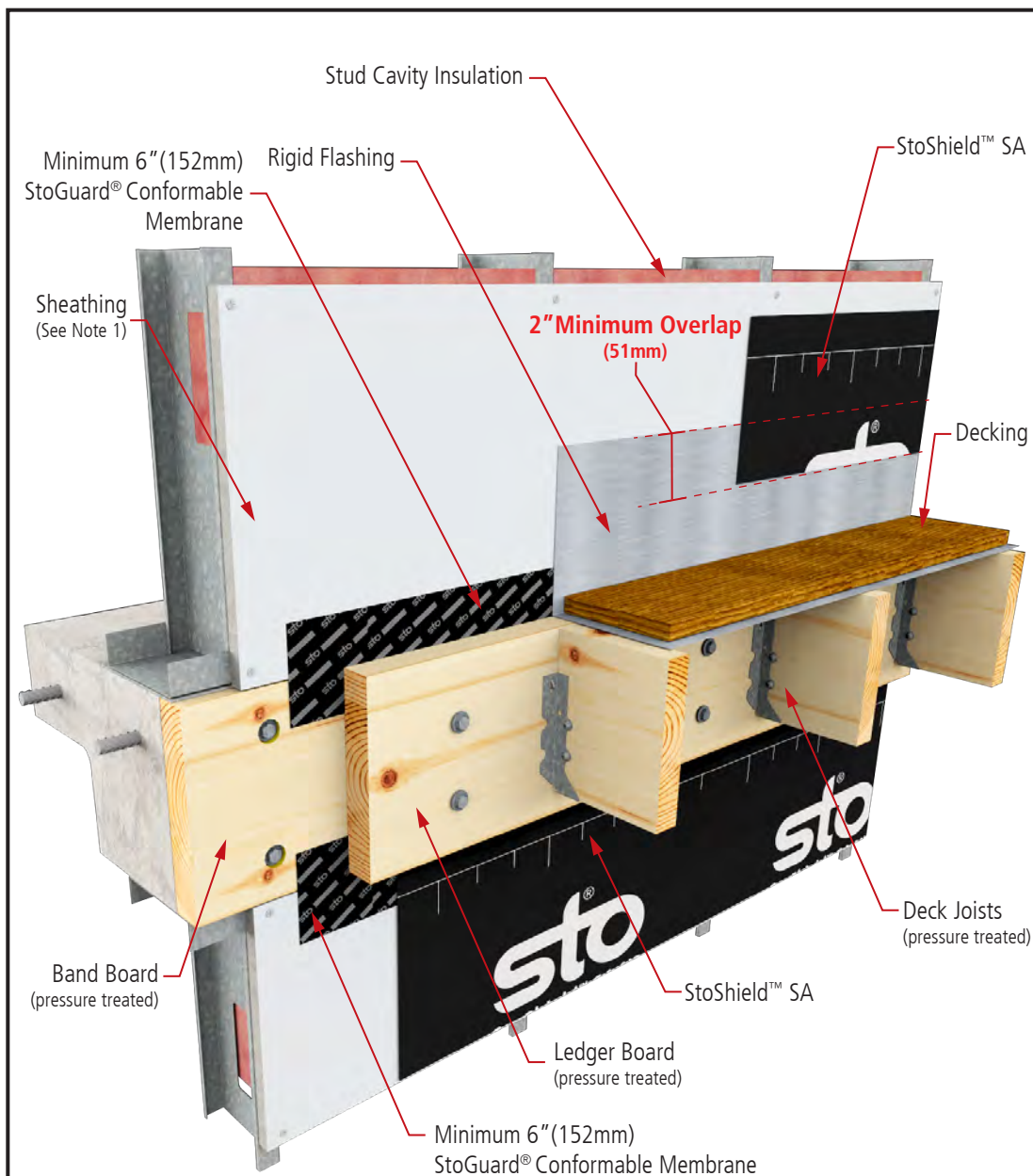


# StoShield™ SA

## Connection to Decks and Porches

Detail No.: 24s.45

Date: May 2025



### Notes:

1. Glass mat gypsum sheathing in compliance with ASTM C1177, Exterior Grade or Exposure 1 wood-based sheathing, or cementitious sheathing in compliance with ASTM C1325 Type A.

2. Apply StoShield™SA membranes with minimum 2\"(51mm) shingle laps at horizontal seams.

3. **IMPORTANT:** After StoShield™SA membrane application is in place, immediately apply firm, uniform pressure using a hard rubber roller to create a wrinkle-free surface.

4. Components not identified as Sto are furnished by other manufacturers and are not necessarily installed by trades who install the Sto products. Refer to project specific contract documents.



### ATTENTION

Property of Sto Corp. All Rights Reserved.

[www.stocorp.com](http://www.stocorp.com)

Sto products are intended for use by qualified professional contractors, not consumers, as a component of a larger construction assembly as specified by a qualified design professional, general contractor or builder. They should be installed in accordance with those specifications and Sto's instructions. Sto Corp. disclaims all, and assumes no, liability for on-site inspections, for its products applied improperly, or by unqualified persons or entities, or as part of an improperly designed or constructed building, for the nonperformance of adjacent building components or assemblies, or for other construction activities beyond Sto's control. Improper use of Sto products or use as part of an improperly designed or constructed larger assembly or building may result in serious damage to Sto products, and to the structure of the building or its components.

STO CORP. DISCLAIMS ALL WARRANTIES EXPRESSED OR IMPLIED EXCEPT FOR EXPLICIT LIMITED WRITTEN WARRANTIES ISSUED TO AND ACCEPTED BY BUILDING OWNERS IN ACCORDANCE WITH STO'S WARRANTY PROGRAMS WHICH ARE SUBJECT TO CHANGE FROM TIME TO TIME. For the fullest, most current information on proper application, clean-up, mixing and other specifications and warranties, cautions and disclaimers, please refer to the Sto Corp. website, [www.stocorp.com](http://www.stocorp.com).



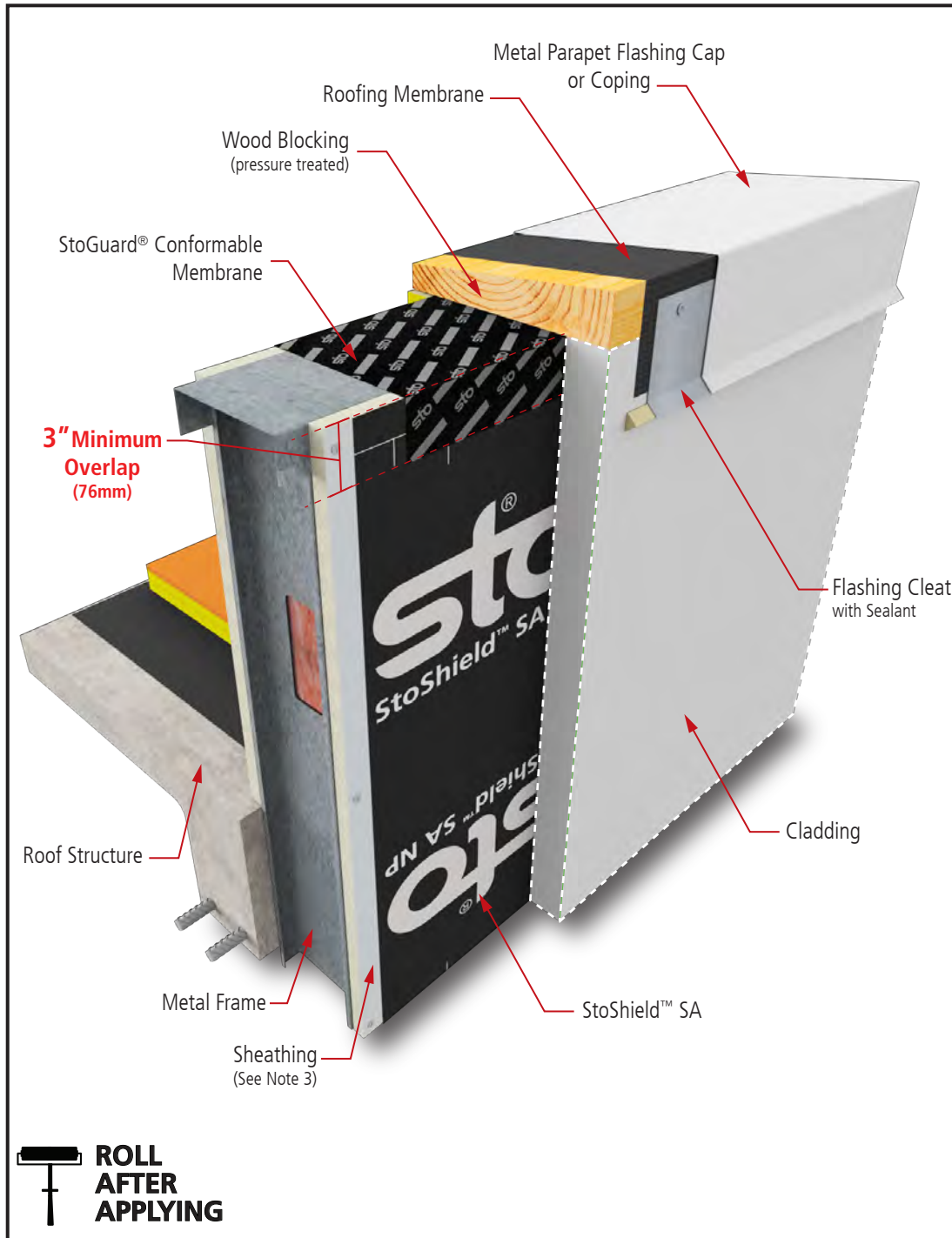
# StoShield™ SA

## Termination at Parapet - Front

Detail No.: 24s.60

Date: May 2025

Page 1 of 2



### Notes:

1. Glass mat gypsum sheathing in compliance with ASTM C1177, Exterior Grade or Exposure 1 wood-based sheathing, or cementitious sheathing in compliance with ASTM C1325 Type A.
2. Apply StoShield™ SA membranes with minimum 2\" (51mm) shingle laps at horizontal seams.
3. **IMPORTANT:** After StoShield™ SA membrane application is in place, immediately apply firm, uniform pressure using a hard rubber roller to create a wrinkle-free surface.
4. Components not identified as Sto are furnished by other manufacturers and are not necessarily installed by trades who install the Sto products. Refer to project specific contract documents.
5. Verify compatibility of StoGuard® Conformable Membrane with roof Air Barrier Membrane.

### ATTENTION

Sto products are intended for use by qualified professional contractors, not consumers, as a component of a larger construction assembly as specified by a qualified design professional, general contractor or builder. They should be installed in accordance with those specifications and Sto's instructions. Sto Corp. disclaims all, and assumes no, liability for on-site inspections, for its products applied improperly, or by unqualified persons or entities, or as part of an improperly designed or constructed building, for the nonperformance of adjacent building components or assemblies, or for other construction activities beyond Sto's control. Improper use of Sto products or use as part of an improperly designed or constructed larger assembly or building may result in serious damage to Sto products, and to the structure of the building or its components.

**STO CORP. DISCLAIMS ALL WARRANTIES EXPRESSED OR IMPLIED EXCEPT FOR EXPLICIT LIMITED WRITTEN WARRANTIES ISSUED TO AND ACCEPTED BY BUILDING OWNERS IN ACCORDANCE WITH STO'S WARRANTY PROGRAMS WHICH ARE SUBJECT TO CHANGE FROM TIME TO TIME.** For the fullest, most current information on proper application, clean-up, mixing and other specifications and warranties, cautions and disclaimers, please refer to the Sto Corp. website, [www.stocorp.com](http://www.stocorp.com).

Property of Sto Corp. All Rights Reserved.

[www.stocorp.com](http://www.stocorp.com)





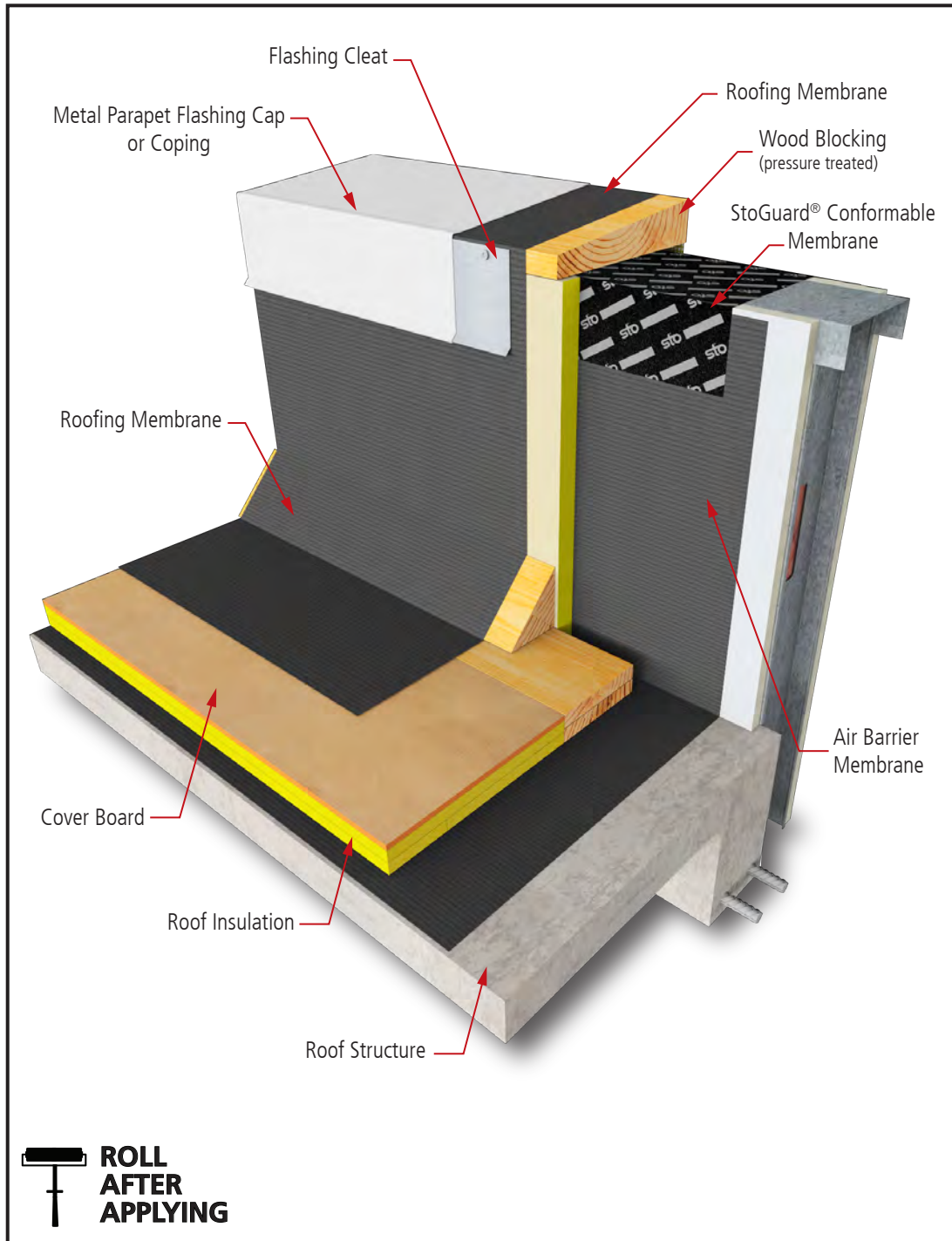
# StoShield™ SA

## Termination at Parapet - Back

Detail No.: 24s.60

Date: May 2025

Page 2 of 2



### Notes:

1. Glass mat gypsum sheathing in compliance with ASTM C1177, Exterior Grade or Exposure 1 wood-based sheathing, or cementitious sheathing in compliance with ASTM C1325 Type A.
2. Apply StoShield™ SA membranes with minimum 2" (51mm) shingle laps at horizontal seams.
3. **IMPORTANT:** After StoShield™ SA membrane application is in place, immediately apply firm, uniform pressure using a hard rubber roller to create a wrinkle-free surface.
4. Components not identified as Sto are furnished by other manufacturers and are not necessarily installed by trades who install the Sto products. Refer to project specific contract documents.
5. Verify compatibility of StoGuard® Conformable Membrane with roof Air Barrier Membrane.

### ATTENTION

Property of Sto Corp. All Rights Reserved.

[www.stocorp.com](http://www.stocorp.com)

Sto products are intended for use by qualified professional contractors, not consumers, as a component of a larger construction assembly as specified by a qualified design professional, general contractor or builder. They should be installed in accordance with those specifications and Sto's instructions. Sto Corp. disclaims all, and assumes no, liability for on-site inspections, for its products applied improperly, or by unqualified persons or entities, or as part of an improperly designed or constructed building, for the nonperformance of adjacent building components or assemblies, or for other construction activities beyond Sto's control. Improper use of Sto products or use as part of an improperly designed or constructed larger assembly or building may result in serious damage to Sto products, and to the structure of the building or its components.

**STO CORP. DISCLAIMS ALL WARRANTIES EXPRESSED OR IMPLIED EXCEPT FOR EXPLICIT LIMITED WRITTEN WARRANTIES ISSUED TO AND ACCEPTED BY BUILDING OWNERS IN ACCORDANCE WITH STO'S WARRANTY PROGRAMS WHICH ARE SUBJECT TO CHANGE FROM TIME TO TIME.** For the fullest, most current information on proper application, clean-up, mixing and other specifications and warranties, cautions and disclaimers, please refer to the Sto Corp. website, [www.stocorp.com](http://www.stocorp.com).

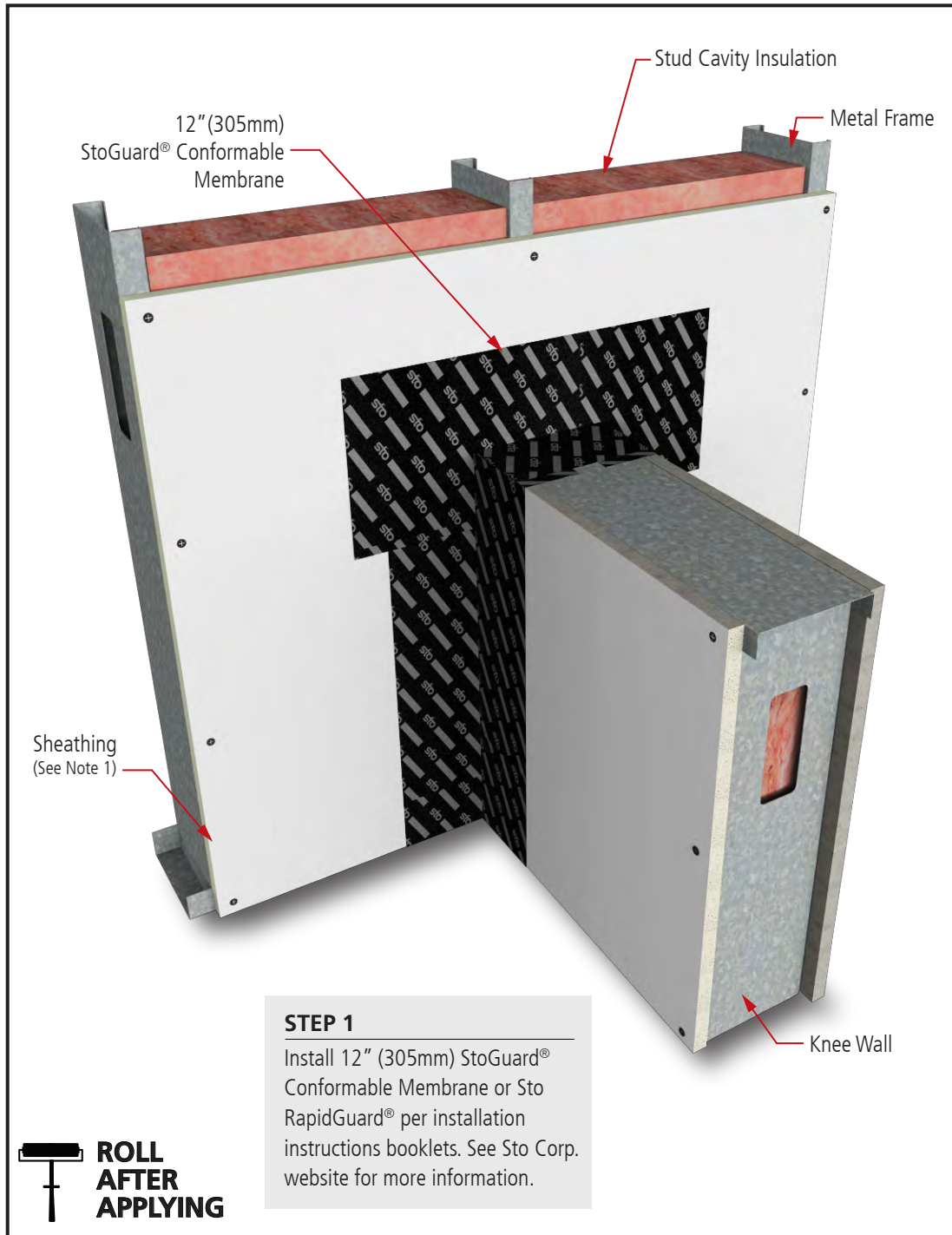


# StoShield™ SA Knee Wall

Detail No.: 24s.64

Date: May 2025

Page 1 of 2



## Notes:

1. Glass mat gypsum sheathing in compliance with ASTM C1177, Exterior Grade or Exposure 1 wood-based sheathing, or cementitious sheathing in compliance with ASTM C1325 Type A.

2. Apply StoShield™ SA membranes with minimum 2" (51mm) shingle laps at horizontal seams.

3. **IMPORTANT:** After StoShield™ SA membrane application is in place, immediately apply firm, uniform pressure using a hard rubber roller to create a wrinkle-free surface.

4. Components not identified as Sto are furnished by other manufacturers and are not necessarily installed by trades who install the Sto products. Refer to project specific contract documents.

5. Refer to Sto Detail No. 23s.64 in the StoGuard® Conformable Membrane Installation Guide.

## ATTENTION

Property of Sto Corp. All Rights Reserved.

[www.stocorp.com](http://www.stocorp.com)

Sto products are intended for use by qualified professional contractors, not consumers, as a component of a larger construction assembly as specified by a qualified design professional, general contractor or builder. They should be installed in accordance with those specifications and Sto's instructions. Sto Corp. disclaims all, and assumes no, liability for on-site inspections, for its products applied improperly, or by unqualified persons or entities, or as part of an improperly designed or constructed building, for the nonperformance of adjacent building components or assemblies, or for other construction activities beyond Sto's control. Improper use of Sto products or use as part of an improperly designed or constructed larger assembly or building may result in serious damage to Sto products, and to the structure of the building or its components.

STO CORP. DISCLAIMS ALL WARRANTIES EXPRESSED OR IMPLIED EXCEPT FOR EXPLICIT LIMITED WRITTEN WARRANTIES ISSUED TO AND ACCEPTED BY BUILDING OWNERS IN ACCORDANCE WITH STO'S WARRANTY PROGRAMS WHICH ARE SUBJECT TO CHANGE FROM TIME TO TIME. For the fullest, most current information on proper application, clean-up, mixing and other specifications and warranties, cautions and disclaimers, please refer to the Sto Corp. website, [www.stocorp.com](http://www.stocorp.com).

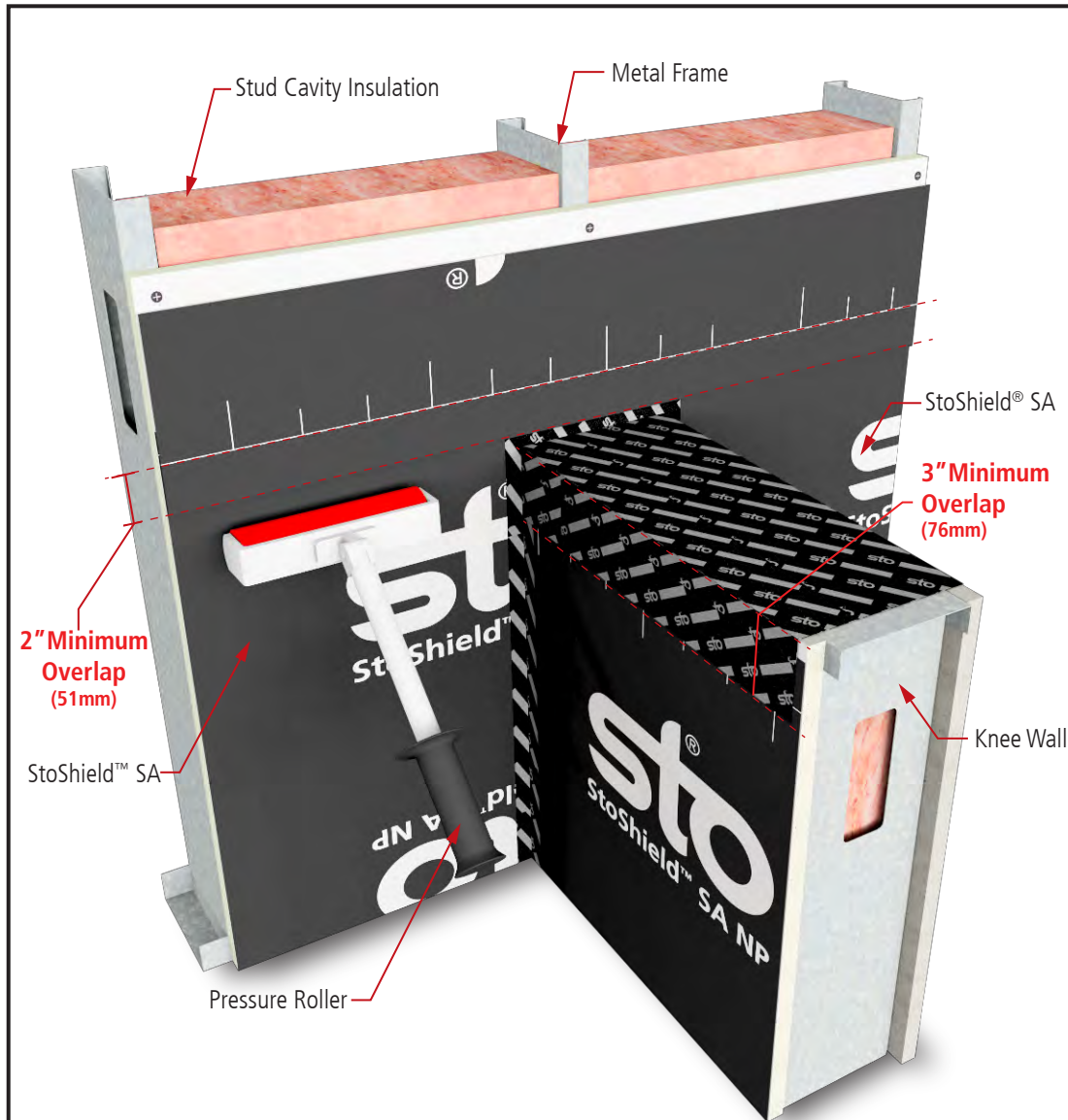


# StoShield™ SA Knee Wall

Detail No.: 24s.64

Date: May 2025

Page 2 of 2



## STEP 2

Install StoShield™ SA membrane beginning at the bottom of the wall, working up, shingle lapping a minimum of 2" (50mm). Shingle lap 12" (305mm) StoGuard® Conformable Membrane or Sto RapidGuard® on top of knee wall with a minimum of 3" (76mm) overlap. After placement, apply firm, uniform pressure by rolling with a hard rubber roller.



## Notes:

1. Glass mat gypsum sheathing in compliance with ASTM C1177, Exterior Grade or Exposure 1 wood-based sheathing, or cementitious sheathing in compliance with ASTM C1325 Type A.
2. Apply StoShield™ SA membranes with minimum 2" (51mm) shingle laps at horizontal seams.
3. **IMPORTANT:** After StoShield™ SA membrane application is in place, immediately apply firm, uniform pressure using a hard rubber roller to create a wrinkle-free surface.
4. Components not identified as Sto are furnished by other manufacturers and are not necessarily installed by trades who install the Sto products. Refer to project specific contract documents.
5. Refer to Sto Detail No. 23s.64 in the StoGuard® Conformable Membrane Installation Guide.

## ATTENTION

Property of Sto Corp. All Rights Reserved.

www.stocorp.com

Sto products are intended for use by qualified professional contractors, not consumers, as a component of a larger construction assembly as specified by a qualified design professional, general contractor or builder. They should be installed in accordance with those specifications and Sto's instructions. Sto Corp. disclaims all, and assumes no, liability for on-site inspections, for its products applied improperly, or by unqualified persons or entities, or as part of an improperly designed or constructed building, for the nonperformance of adjacent building components or assemblies, or for other construction activities beyond Sto's control. Improper use of Sto products or use as part of an improperly designed or constructed larger assembly or building may result in serious damage to Sto products, and to the structure of the building or its components.

STO CORP. DISCLAIMS ALL WARRANTIES EXPRESSED OR IMPLIED EXCEPT FOR EXPLICIT LIMITED WRITTEN WARRANTIES ISSUED TO AND ACCEPTED BY BUILDING OWNERS IN ACCORDANCE WITH STO'S WARRANTY PROGRAMS WHICH ARE SUBJECT TO CHANGE FROM TIME TO TIME. For the fullest, most current information on proper application, clean-up, mixing and other specifications and warranties, cautions and disclaimers, please refer to the Sto Corp. website, [www.stocorp.com](http://www.stocorp.com).





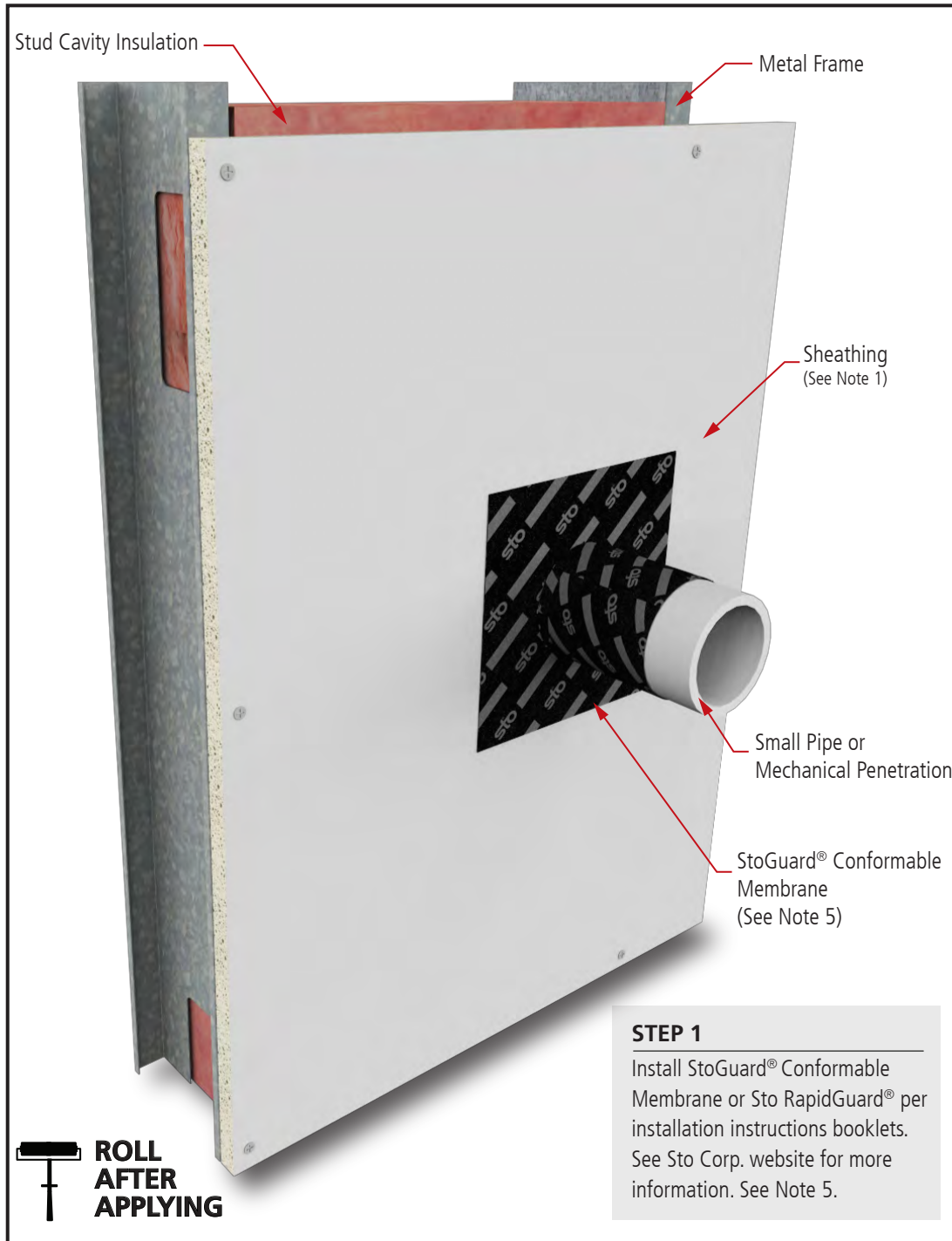
# StoShield™ SA

## Small Pipe or Mechanical Penetration

Detail No.: 24s.70

Date: May 2025

Page 1 of 2



### Notes:

1. Glass mat gypsum sheathing in compliance with ASTM C1177, Exterior Grade or Exposure 1 wood-based sheathing, or cementitious sheathing in compliance with ASTM C1325 Type A.
2. Apply StoShield™ SA membranes with minimum 2" (51mm) shingle laps at horizontal seams.
3. **IMPORTANT:** After StoShield™ SA membrane application is in place, immediately apply firm, uniform pressure using a hard rubber roller to create a wrinkle-free surface.
4. Components not identified as Sto are furnished by other manufacturers and are not necessarily installed by trades who install the Sto products. Refer to project specific contract documents.
5. Refer to Sto Detail 23s.70 in StoGuard™ Conformable Membrane Installation Guide for detailing of the membrane around the pipe penetration.

### ATTENTION

Property of Sto Corp. All Rights Reserved.

Sto products are intended for use by qualified professional contractors, not consumers, as a component of a larger construction assembly as specified by a qualified design professional, general contractor or builder. They should be installed in accordance with those specifications and Sto's instructions. Sto Corp. disclaims all, and assumes no, liability for on-site inspections, for its products applied improperly, or by unqualified persons or entities, or as part of an improperly designed or constructed building, for the nonperformance of adjacent building components or assemblies, of for other construction activities beyond Sto's control. Improper use of Sto products or use as part of an improperly designed or constructed larger assembly or building may result in serious damage to Sto products, and to the structure of the building or its components.

STO CORP. DISCLAIMS ALL WARRANTIES EXPRESSED OR IMPLIED EXCEPT FOR EXPLICIT LIMITED WRITTEN WARRANTIES ISSUED TO AND ACCEPTED BY BUILDING OWNERS IN ACCORDANCE WITH STO'S WARRANTY PROGRAMS WHICH ARE SUBJECT TO CHANGE FROM TIME TO TIME. For the fullest, most current information on proper application, clean-up, mixing and other specifications and warranties, cautions and disclaimers, please refer to the Sto Corp. website, [www.stocorp.com](http://www.stocorp.com).

[www.stocorp.com](http://www.stocorp.com)





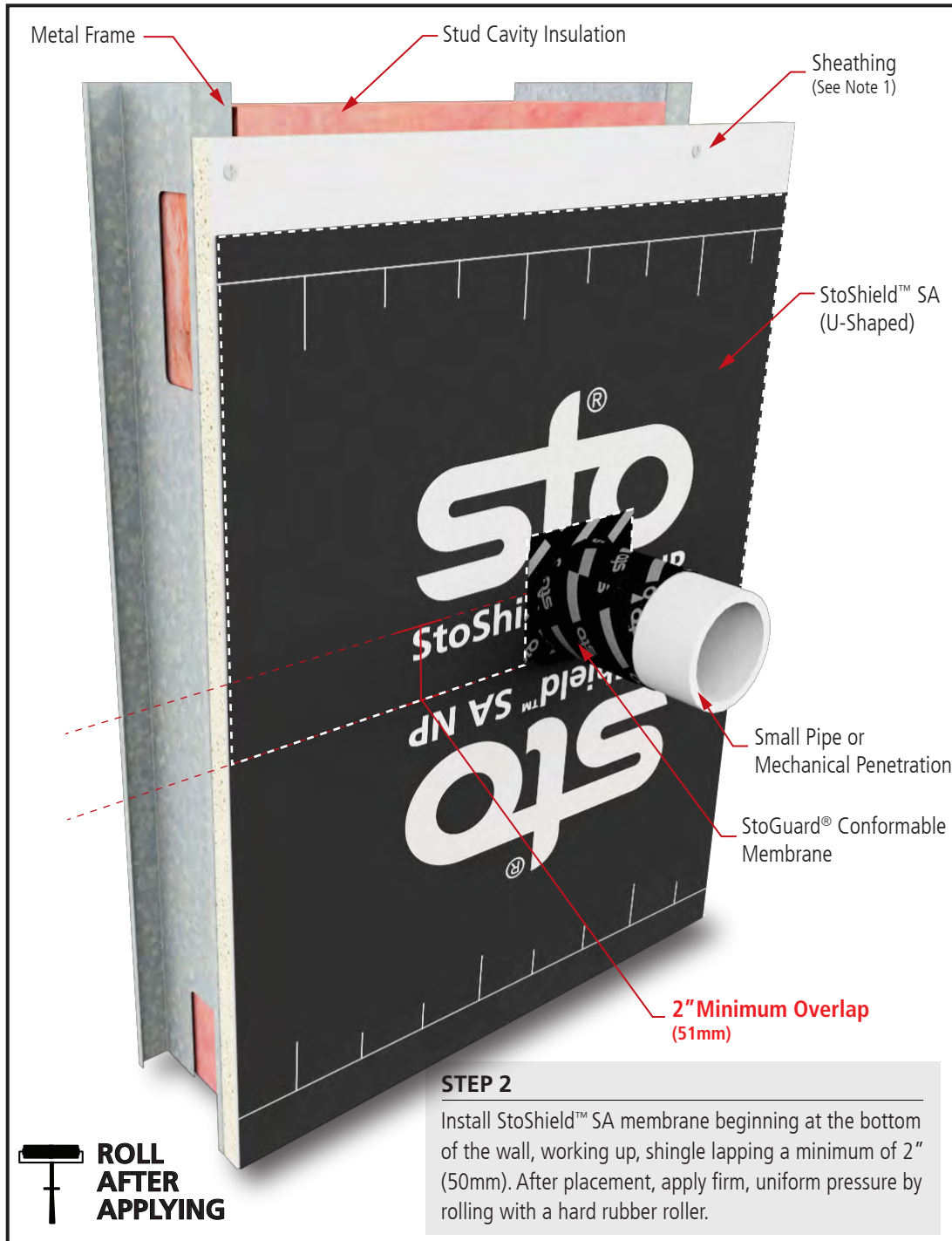
# StoShield™ SA

## Small Pipe or Mechanical Penetration

Detail No.: 24s.70

Date: May 2025

Page 2 of 2



### Notes:

1. Glass mat gypsum sheathing in compliance with ASTM C1177, Exterior Grade or Exposure 1 wood-based sheathing, or cementitious sheathing in compliance with ASTM C1325 Type A.
2. Apply StoShield™ SA membranes with minimum 2" (51mm) shingle laps at horizontal seams.
3. **IMPORTANT:** After StoShield™ SA membrane application is in place, immediately apply firm, uniform pressure using a hard rubber roller to create a wrinkle-free surface.
4. Components not identified as Sto are furnished by other manufacturers and are not necessarily installed by trades who install the Sto products. Refer to project specific contract documents.
5. Refer to Sto Detail 23s.70 in StoGuard® Conformable Membrane Installation Guide for detailing of the membrane around the pipe penetration.

### ATTENTION

Property of Sto Corp. All Rights Reserved.

Sto products are intended for use by qualified professional contractors, not consumers, as a component of a larger construction assembly as specified by a qualified design professional, general contractor or builder. They should be installed in accordance with those specifications and Sto's instructions. Sto Corp. disclaims all, and assumes no, liability for on-site inspections, for its products applied improperly, or by unqualified persons or entities, or as part of an improperly designed or constructed building, for the nonperformance of adjacent building components or assemblies, of for other construction activities beyond Sto's control. Improper use of Sto products or use as part of an improperly designed or constructed larger assembly or building may result in serious damage to Sto products, and to the structure of the building or its components.

**STO CORP. DISCLAIMS ALL WARRANTIES EXPRESSED OR IMPLIED EXCEPT FOR EXPLICIT LIMITED WRITTEN WARRANTIES ISSUED TO AND ACCEPTED BY BUILDING OWNERS IN ACCORDANCE WITH STO'S WARRANTY PROGRAMS WHICH ARE SUBJECT TO CHANGE FROM TIME TO TIME.** For the fullest, most current information on proper application, clean-up, mixing and other specifications and warranties, cautions and disclaimers, please refer to the Sto Corp. website, [www.stocorp.com](http://www.stocorp.com).

[www.stocorp.com](http://www.stocorp.com)



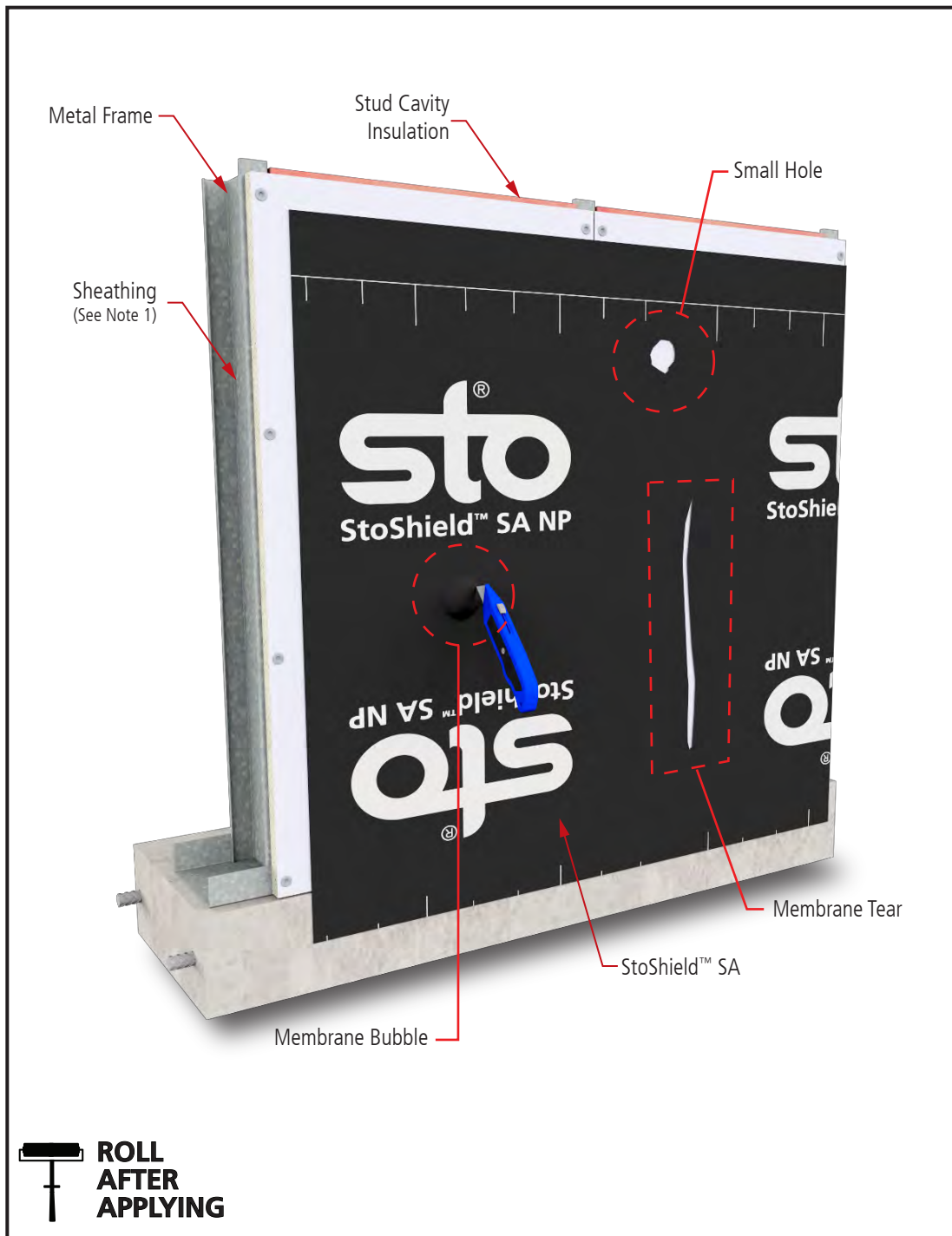
# StoShield™ SA

## Common Repairs - Damage to Membrane

Detail No.: 24s.90A

Date: May 2025

Page 1 of 1



### Notes:

1. Glass mat gypsum sheathing in compliance with ASTM C1177, Exterior Grade or Exposure 1 wood-based sheathing, or cementitious sheathing in compliance with ASTM C1325 Type A.

2. Apply StoShield™SA membranes with minimum 2" (51mm) shingle laps at horizontal seams.

3. **IMPORTANT:** After StoShield™SA membrane application is in place, immediately apply firm, uniform pressure using a hard rubber roller to create a wrinkle-free surface.

4. Components not identified as Sto are furnished by other manufacturers and are not necessarily installed by trades who install the Sto products. Refer to project specific contract documents.

5. Verify compatibility of StoShield™SA membrane with foundation waterproofing via lab or field adhesion tests, or both.

### ATTENTION

Property of Sto Corp. All Rights Reserved.

[www.stocorp.com](http://www.stocorp.com)

Sto products are intended for use by qualified professional contractors, not consumers, as a component of a larger construction assembly as specified by a qualified design professional, general contractor or builder. They should be installed in accordance with those specifications and Sto's instructions. Sto Corp. disclaims all, and assumes no, liability for on-site inspections, for its products applied improperly, or by unqualified persons or entities, or as part of an improperly designed or constructed building, for the nonperformance of adjacent building components or assemblies, or for other construction activities beyond Sto's control. Improper use of Sto products or use as part of an improperly designed or constructed larger assembly or building may result in serious damage to Sto products, and to the structure of the building or its components.

STO CORP. DISCLAIMS ALL WARRANTIES EXPRESSED OR IMPLIED EXCEPT FOR EXPLICIT LIMITED WRITTEN WARRANTIES ISSUED TO AND ACCEPTED BY BUILDING OWNERS IN ACCORDANCE WITH STO'S WARRANTY PROGRAMS WHICH ARE SUBJECT TO CHANGE FROM TIME TO TIME. For the fullest, most current information on proper application, clean-up, mixing and other specifications and warranties, cautions and disclaimers, please refer to the Sto Corp. website, [www.stocorp.com](http://www.stocorp.com).



# StoShield™ SA

## Common Repairs - Damage to Membrane

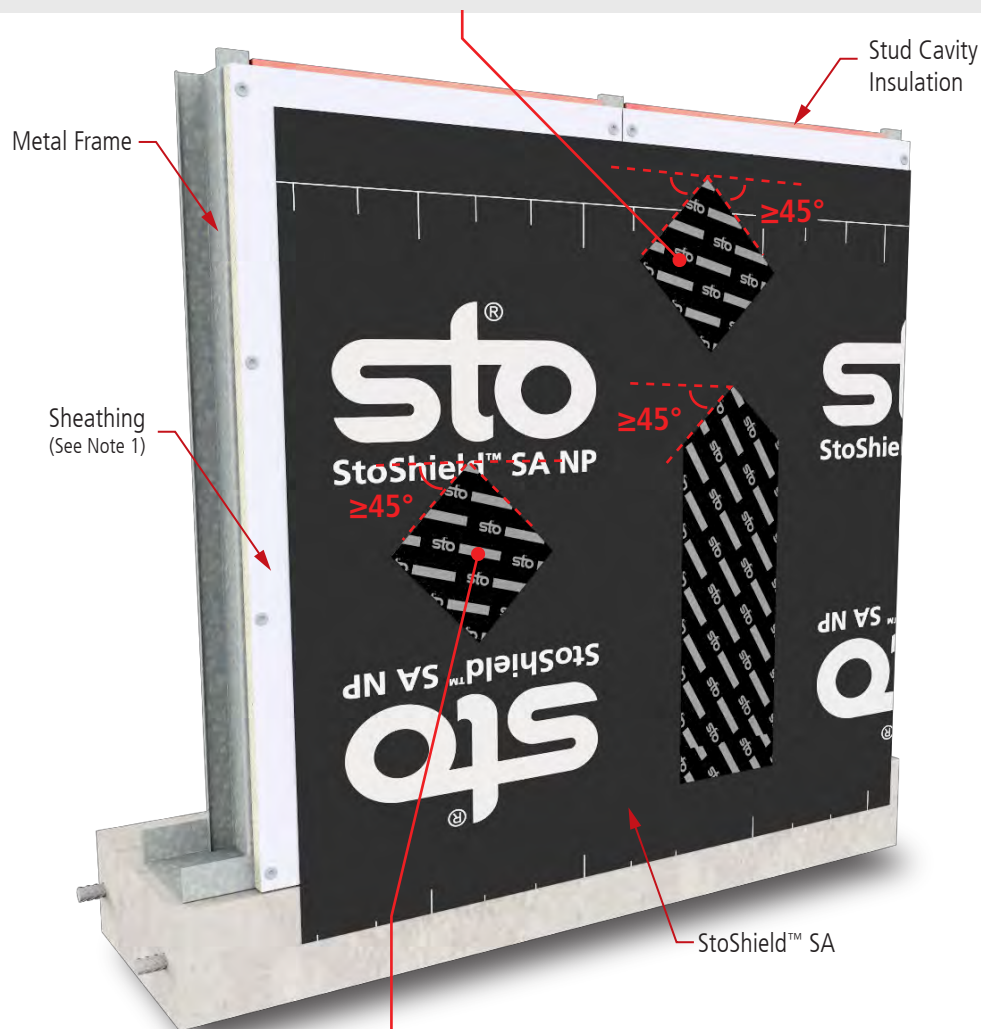
Detail No.: 24s.90B

Date: May 2025

Page 1 of 2

### Small Holes & Tears

Use StoGuard® Conformable Membrane over the damaged area, turning the membrane to create a 45° angle, providing a minimum of 3" (76mm) overlap on all sides onto the StoShield™ SA membrane. After placement, apply firm, uniform pressure by rolling the membrane with a hard rubber roller.



### Notes:

1. Glass mat gypsum sheathing in compliance with ASTM C1177, Exterior Grade or Exposure 1 wood-based sheathing, or cementitious sheathing in compliance with ASTM C1325 Type A.

2. Apply StoShield™SA membranes with minimum 2" (51mm) shingle laps at horizontal seams.

3. **IMPORTANT:** After StoShield™SA membrane application is in place, immediately apply firm, uniform pressure using a hard rubber roller to create a wrinkle-free surface.

4. Components not identified as Sto are furnished by other manufacturers and are not necessarily installed by trades who install the Sto products. Refer to project specific contract documents.

5. Verify compatibility of StoShield™SA membrane with foundation waterproofing via lab or field adhesion tests, or both.

### Membrane Bubble

For membrane bubbles use a utility knife to make a slit and force the trapped air out. Use StoGuard® Conformable Membrane over the damaged area, turning the membrane to create a 45° angle, providing a minimum of 3" (76mm) overlap on all sides of the StoShield™ SA membrane. After placement, apply firm, uniform pressure by rolling the membrane with a hard rubber roller.

### ATTENTION

Property of Sto Corp. All Rights Reserved.

[www.stocorp.com](http://www.stocorp.com)

Sto products are intended for use by qualified professional contractors, not consumers, as a component of a larger construction assembly as specified by a qualified design professional, general contractor or builder. They should be installed in accordance with those specifications and Sto's instructions. Sto Corp. disclaims all, and assumes no, liability for on-site inspections, for its products applied improperly, or by unqualified persons or entities, or as part of an improperly designed or constructed building, for the nonperformance of adjacent building components or assemblies, or for other construction activities beyond Sto's control. Improper use of Sto products or use as part of an improperly designed or constructed larger assembly or building may result in serious damage to Sto products, and to the structure of the building or its components.

STO CORP. DISCLAIMS ALL WARRANTIES EXPRESSED OR IMPLIED EXCEPT FOR EXPLICIT LIMITED WRITTEN WARRANTIES ISSUED TO AND ACCEPTED BY BUILDING OWNERS IN ACCORDANCE WITH STO'S WARRANTY PROGRAMS WHICH ARE SUBJECT TO CHANGE FROM TIME TO TIME. For the fullest, most current information on proper application, clean-up, mixing and other specifications and warranties, cautions and disclaimers, please refer to the Sto Corp. website, [www.stocorp.com](http://www.stocorp.com).



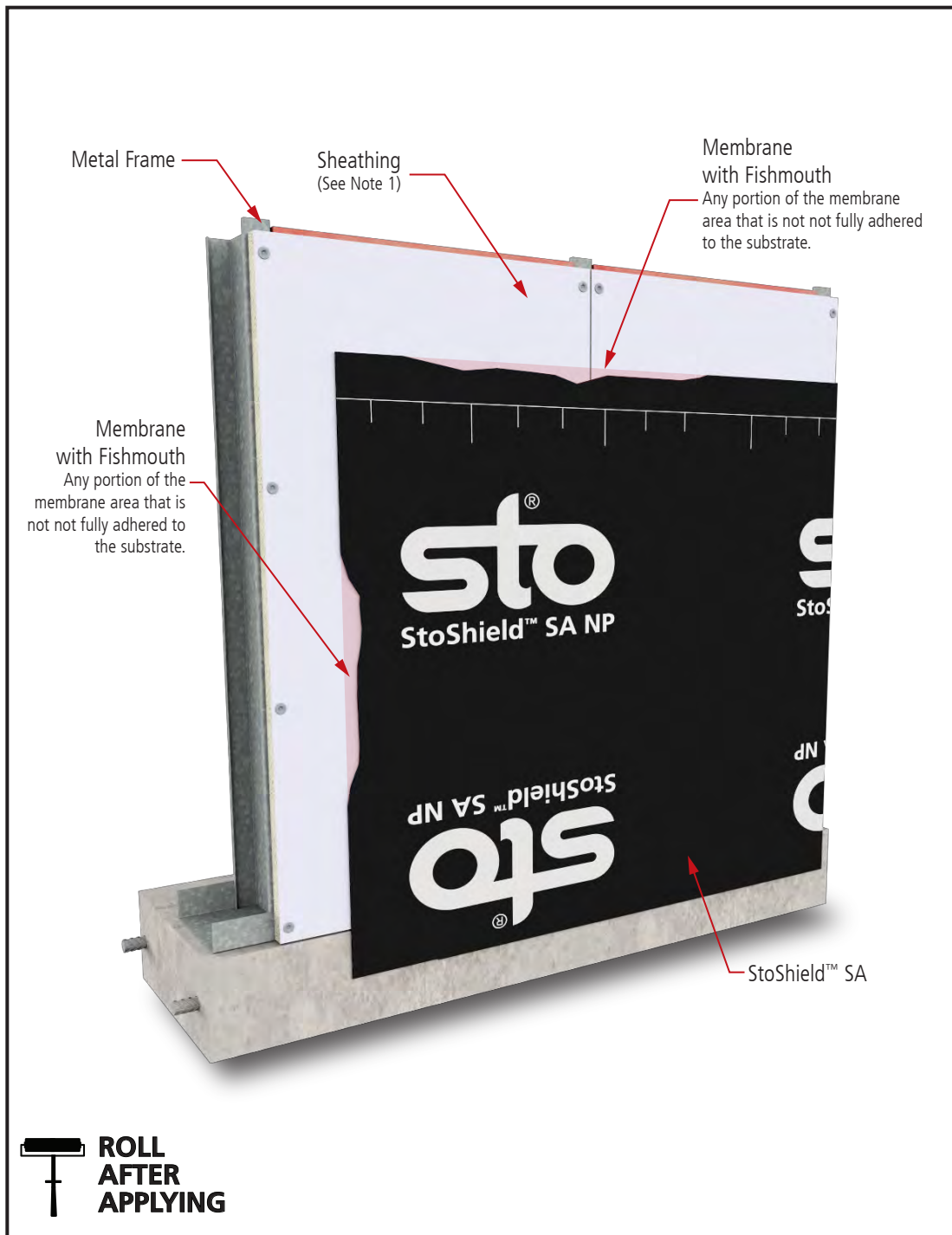
# StoShield™ SA

## Common Repairs - Fishmouths and Membrane Irregularities

Detail No.: 24s.90B

Date: May 2025

Page 1 of 2



### Notes:

1. Glass mat gypsum sheathing in compliance with ASTM C1177, Exterior Grade or Exposure 1 wood-based sheathing, or cementitious sheathing in compliance with ASTM C1325 Type A.

2. Apply StoShield™SA membranes with minimum 2" (51mm) shingle laps at horizontal seams.

3. **IMPORTANT:** After StoShield™SA membrane application is in place, immediately apply firm, uniform pressure using a hard rubber roller to create a wrinkle-free surface.

4. Components not identified as Sto are furnished by other manufacturers and are not necessarily installed by trades who install the Sto products. Refer to project specific contract documents.

5. Verify compatibility of StoShield™SA membrane with foundation waterproofing via lab or field adhesion tests, or both.

### ATTENTION

Property of Sto Corp. All Rights Reserved.

[www.stocorp.com](http://www.stocorp.com)

Sto products are intended for use by qualified professional contractors, not consumers, as a component of a larger construction assembly as specified by a qualified design professional, general contractor or builder. They should be installed in accordance with those specifications and Sto's instructions. Sto Corp. disclaims all, and assumes no, liability for on-site inspections, for its products applied improperly, or by unqualified persons or entities, or as part of an improperly designed or constructed building, for the nonperformance of adjacent building components or assemblies, or for other construction activities beyond Sto's control. Improper use of Sto products or use as part of an improperly designed or constructed larger assembly or building may result in serious damage to Sto products, and to the structure of the building or its components.

STO CORP. DISCLAIMS ALL WARRANTIES EXPRESSED OR IMPLIED EXCEPT FOR EXPLICIT LIMITED WRITTEN WARRANTIES ISSUED TO AND ACCEPTED BY BUILDING OWNERS IN ACCORDANCE WITH STO'S WARRANTY PROGRAMS WHICH ARE SUBJECT TO CHANGE FROM TIME TO TIME. For the fullest, most current information on proper application, clean-up, mixing and other specifications and warranties, cautions and disclaimers, please refer to the Sto Corp. website, [www.stocorp.com](http://www.stocorp.com).





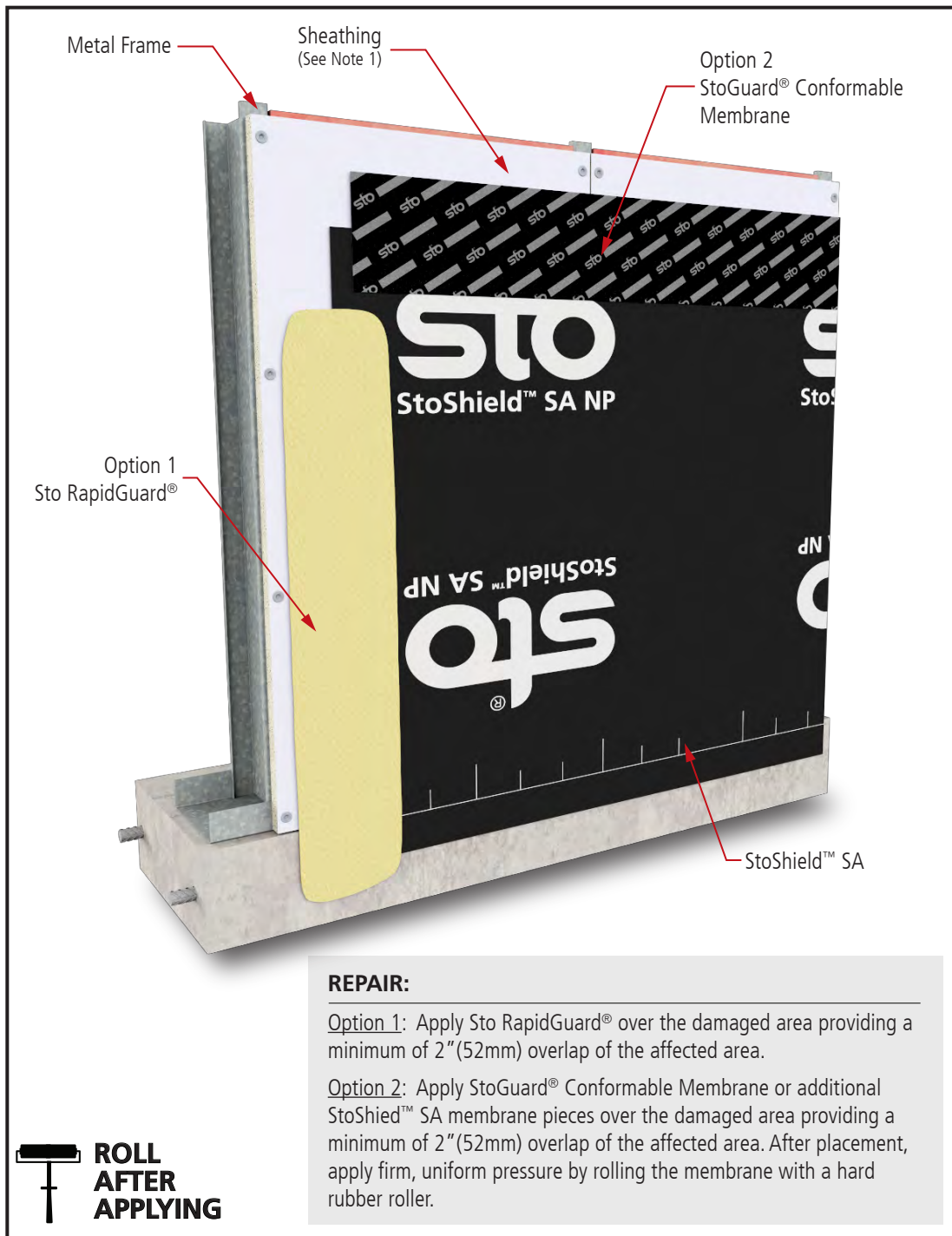
# StoShield™ SA

## Common Repairs - Fishmouths and Membrane Irregularities

Detail No.: 24s.90B

Date: May 2025

Page 2 of 2



### Notes:

1. Glass mat gypsum sheathing in compliance with ASTM C1177, Exterior Grade or Exposure 1 wood-based sheathing, or cementitious sheathing in compliance with ASTM C1325 Type A.

2. Apply StoShield™ SA membranes with minimum 2" (51mm) shingle laps at horizontal seams.

3. **IMPORTANT:** After StoShield™ SA membrane application is in place, immediately apply firm, uniform pressure using a hard rubber roller to create a wrinkle-free surface.

4. Components not identified as Sto are furnished by other manufacturers and are not necessarily installed by trades who install the Sto products. Refer to project specific contract documents.

5. Verify compatibility of StoShield™ SA membrane with foundation waterproofing via lab or field adhesion tests, or both.

### ATTENTION

Property of Sto Corp. All Rights Reserved.

www.stocorp.com

Sto products are intended for use by qualified professional contractors, not consumers, as a component of a larger construction assembly as specified by a qualified design professional, general contractor or builder. They should be installed in accordance with those specifications and Sto's instructions. Sto Corp. disclaims all, and assumes no, liability for on-site inspections, for its products applied improperly, or by unqualified persons or entities, or as part of an improperly designed or constructed building, for the nonperformance of adjacent building components or assemblies, or for other construction activities beyond Sto's control. Improper use of Sto products or use as part of an improperly designed or constructed larger assembly or building may result in serious damage to Sto products, and to the structure of the building or its components.

STO CORP. DISCLAIMS ALL WARRANTIES EXPRESSED OR IMPLIED EXCEPT FOR EXPLICIT LIMITED WRITTEN WARRANTIES ISSUED TO AND ACCEPTED BY BUILDING OWNERS IN ACCORDANCE WITH STO'S WARRANTY PROGRAMS WHICH ARE SUBJECT TO CHANGE FROM TIME TO TIME. For the fullest, most current information on proper application, clean-up, mixing and other specifications and warranties, cautions and disclaimers, please refer to the Sto Corp. website, [www.stocorp.com](http://www.stocorp.com).

