

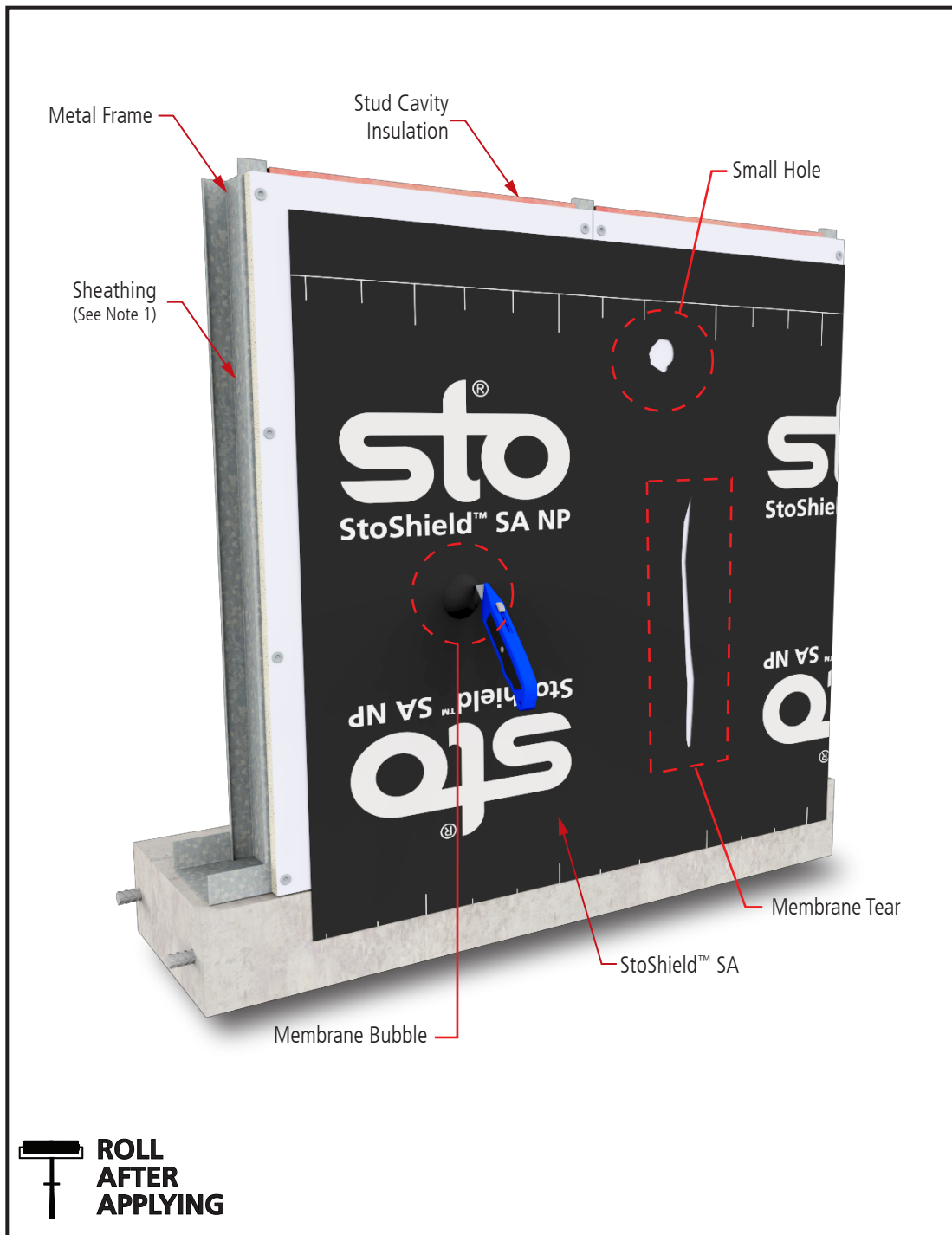
StoShield™ SA

Common Repairs - Damage to Membrane

Detail No.: 24s.90A

Date: May 2025

Page 1 of 2



Notes:

1. Glass mat gypsum sheathing in compliance with ASTM C1177, Exterior Grade or Exposure 1 wood-based sheathing, or cementitious sheathing in compliance with ASTM C1325 Type A.

2. Apply StoShield™SA membranes with minimum 2" (51mm) shingle laps at horizontal seams.

3. **IMPORTANT:** After StoShield™SA membrane application is in place, immediately apply firm, uniform pressure using a hard rubber roller to create a wrinkle-free surface.

4. Components not identified as Sto are furnished by other manufacturers and are not necessarily installed by trades who install the Sto products. Refer to project specific contract documents.

5. Verify compatibility of StoShield™SA membrane with foundation waterproofing via lab or field adhesion tests, or both.

ATTENTION

Property of Sto Corp. All Rights Reserved.

www.stocorp.com

Sto products are intended for use by qualified professional contractors, not consumers, as a component of a larger construction assembly as specified by a qualified design professional, general contractor or builder. They should be installed in accordance with those specifications and Sto's instructions. Sto Corp. disclaims all, and assumes no, liability for on-site inspections, for its products applied improperly, or by unqualified persons or entities, or as part of an improperly designed or constructed building, for the nonperformance of adjacent building components or assemblies, or for other construction activities beyond Sto's control. Improper use of Sto products or use as part of an improperly designed or constructed larger assembly or building may result in serious damage to Sto products, and to the structure of the building or its components.

STO CORP. DISCLAIMS ALL WARRANTIES EXPRESSED OR IMPLIED EXCEPT FOR EXPLICIT LIMITED WRITTEN WARRANTIES ISSUED TO AND ACCEPTED BY BUILDING OWNERS IN ACCORDANCE WITH STO'S WARRANTY PROGRAMS WHICH ARE SUBJECT TO CHANGE FROM TIME TO TIME. For the fullest, most current information on proper application, clean-up, mixing and other specifications and warranties, cautions and disclaimers, please refer to the Sto Corp. website, www.stocorp.com.



StoShield™ SA

Common Repairs - Damage to Membrane

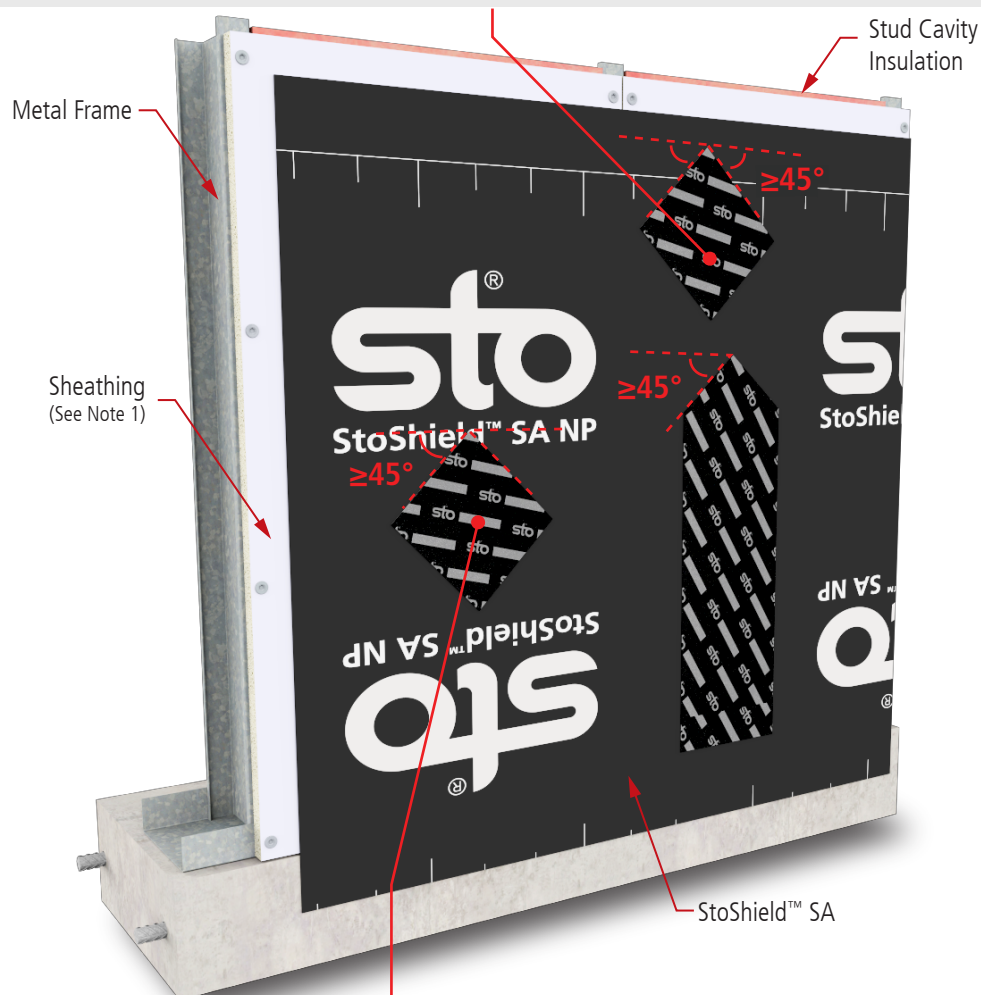
Detail No.: 24s.90B

Date: May 2025

Page 2 of 2

Small Holes & Tears

Use StoGuard® Conformable Membrane or field-cut StoShield™ SA Membrane over the damaged area, turning the membrane to create a 45° angle, providing a minimum of 3" (76mm) overlap on all sides onto the StoShield™ SA membrane. After placement, apply firm, uniform pressure by rolling the membrane with a hard rubber roller.



Notes:

1. Glass mat gypsum sheathing in compliance with ASTM C1177, Exterior Grade or Exposure 1 wood-based sheathing, or cementitious sheathing in compliance with ASTM C1325 Type A.

2. Apply StoShield™ SA membranes with minimum 2" (51mm) shingle laps at horizontal seams.

3. **IMPORTANT:** After StoShield™ SA membrane application is in place, immediately apply firm, uniform pressure using a hard rubber roller to create a wrinkle-free surface.

4. Components not identified as Sto are furnished by other manufacturers and are not necessarily installed by trades who install the Sto products. Refer to project specific contract documents.

5. Verify compatibility of StoShield™ SA membrane with foundation waterproofing via lab or field adhesion tests, or both.

Membrane Bubble

For membrane bubbles use a utility knife to make a slit and force the trapped air out. Use StoGuard® Conformable Membrane or field-cut StoShield™ SA Membrane over the damaged area, turning the membrane to create a 45° angle, providing a minimum of 3" (76mm) overlap on all sides of the StoShield™ SA membrane. After placement, apply firm, uniform pressure by rolling the membrane with a hard rubber roller.

ATTENTION

Property of Sto Corp. All Rights Reserved.

www.stocorp.com

Sto products are intended for use by qualified professional contractors, not consumers, as a component of a larger construction assembly as specified by a qualified design professional, general contractor or builder. They should be installed in accordance with those specifications and Sto's instructions. Sto Corp. disclaims all, and assumes no, liability for on-site inspections, for its products applied improperly, or by unqualified persons or entities, or as part of an improperly designed or constructed building, for the nonperformance of adjacent building components or assemblies, or for other construction activities beyond Sto's control. Improper use of Sto products or use as part of an improperly designed or constructed larger assembly or building may result in serious damage to Sto products, and to the structure of the building or its components.

STO CORP. DISCLAIMS ALL WARRANTIES EXPRESSED OR IMPLIED EXCEPT FOR EXPLICIT LIMITED WRITTEN WARRANTIES ISSUED TO AND ACCEPTED BY BUILDING OWNERS IN ACCORDANCE WITH STO'S WARRANTY PROGRAMS WHICH ARE SUBJECT TO CHANGE FROM TIME TO TIME. For the fullest, most current information on proper application, clean-up, mixing and other specifications and warranties, cautions and disclaimers, please refer to the Sto Corp. website, www.stocorp.com.



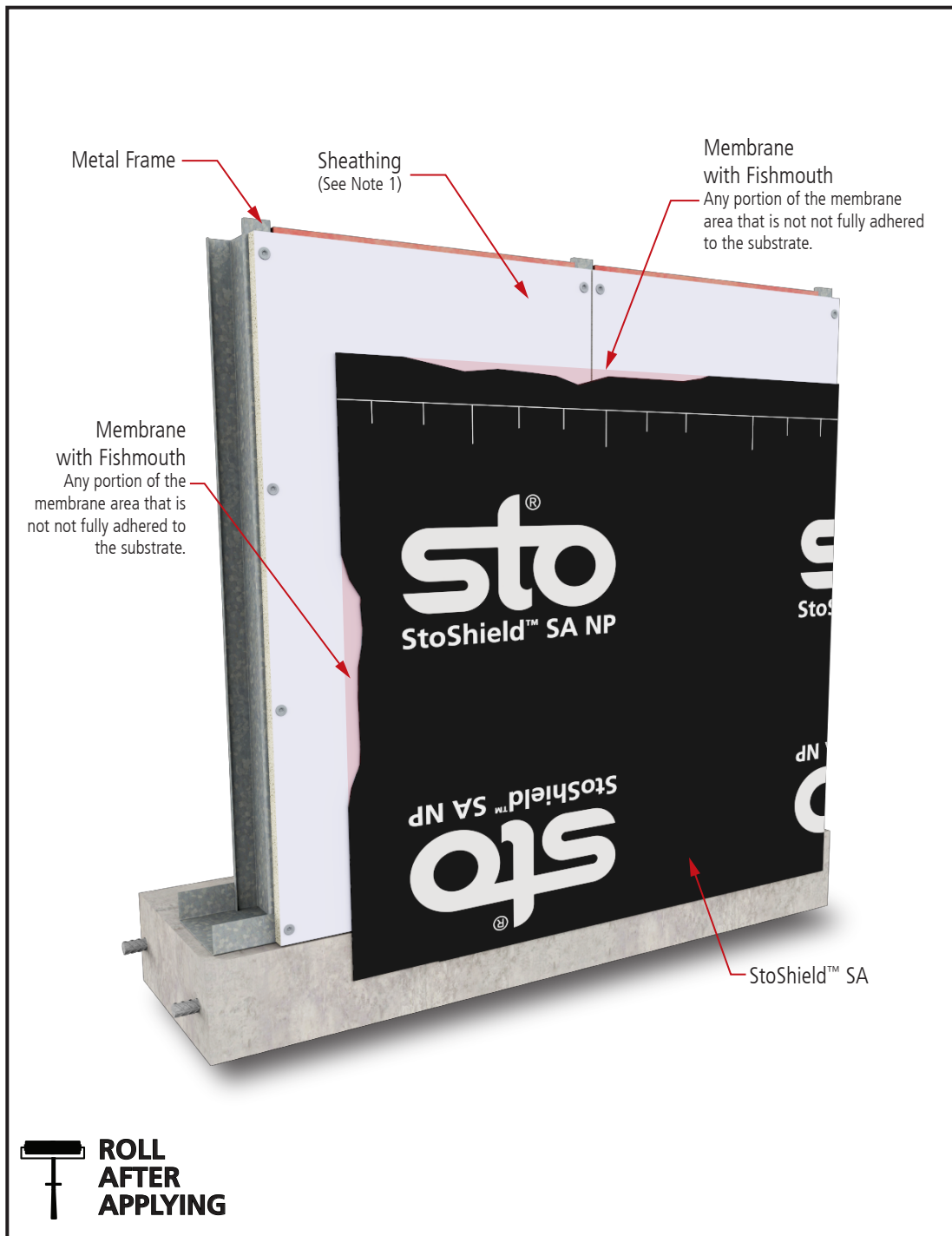
StoShield™ SA

Common Repairs - Fishmouths and Membrane Irregularities

Detail No.: 24s.90B

Date: May 2025

Page 1 of 2



Notes:

1. Glass mat gypsum sheathing in compliance with ASTM C1177, Exterior Grade or Exposure 1 wood-based sheathing, or cementitious sheathing in compliance with ASTM C1325 Type A.

2. Apply StoShield™SA membranes with minimum 2" (51mm) shingle laps at horizontal seams.

3. **IMPORTANT:** After StoShield™SA membrane application is in place, immediately apply firm, uniform pressure using a hard rubber roller to create a wrinkle-free surface.

4. Components not identified as Sto are furnished by other manufacturers and are not necessarily installed by trades who install the Sto products. Refer to project specific contract documents.

5. Verify compatibility of StoShield™SA membrane with foundation waterproofing via lab or field adhesion tests, or both.

ATTENTION

Property of Sto Corp. All Rights Reserved.

www.stocorp.com

Sto products are intended for use by qualified professional contractors, not consumers, as a component of a larger construction assembly as specified by a qualified design professional, general contractor or builder. They should be installed in accordance with those specifications and Sto's instructions. Sto Corp. disclaims all, and assumes no, liability for on-site inspections, for its products applied improperly, or by unqualified persons or entities, or as part of an improperly designed or constructed building, for the nonperformance of adjacent building components or assemblies, or for other construction activities beyond Sto's control. Improper use of Sto products or use as part of an improperly designed or constructed larger assembly or building may result in serious damage to Sto products, and to the structure of the building or its components.

STO CORP. DISCLAIMS ALL WARRANTIES EXPRESSED OR IMPLIED EXCEPT FOR EXPLICIT LIMITED WRITTEN WARRANTIES ISSUED TO AND ACCEPTED BY BUILDING OWNERS IN ACCORDANCE WITH STO'S WARRANTY PROGRAMS WHICH ARE SUBJECT TO CHANGE FROM TIME TO TIME. For the fullest, most current information on proper application, clean-up, mixing and other specifications and warranties, cautions and disclaimers, please refer to the Sto Corp. website, www.stocorp.com.



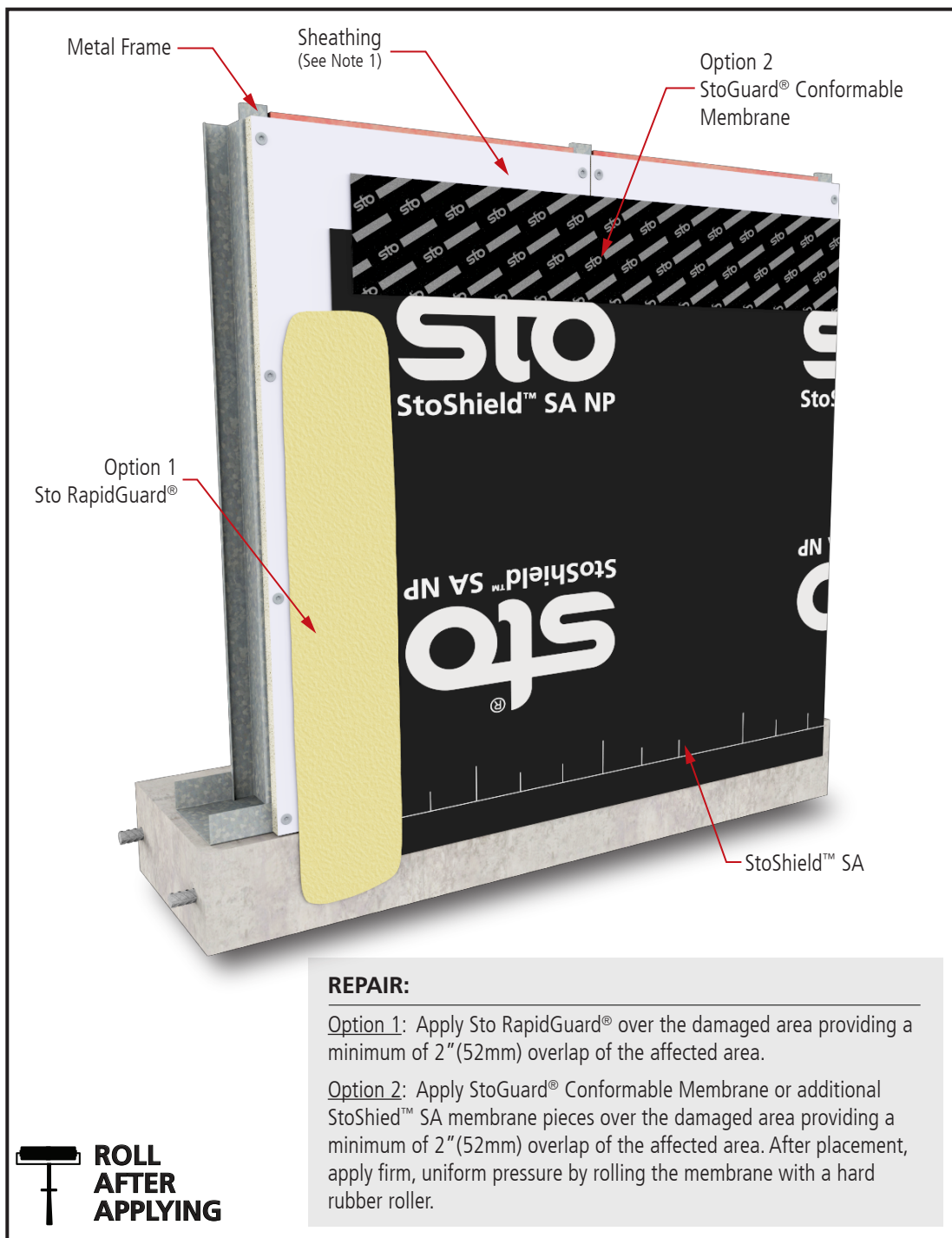
StoShield™ SA

Common Repairs - Fishmouths and Membrane Irregularities

Detail No.: 24s.90B

Date: May 2025

Page 2 of 2



Notes:

1. Glass mat gypsum sheathing in compliance with ASTM C1177, Exterior Grade or Exposure 1 wood-based sheathing, or cementitious sheathing in compliance with ASTM C1325 Type A.

2. Apply StoShield™ SA membranes with minimum 2" (51mm) shingle laps at horizontal seams.

3. **IMPORTANT:** After StoShield™ SA membrane application is in place, immediately apply firm, uniform pressure using a hard rubber roller to create a wrinkle-free surface.

4. Components not identified as Sto are furnished by other manufacturers and are not necessarily installed by trades who install the Sto products. Refer to project specific contract documents.

5. Verify compatibility of StoShield™ SA membrane with foundation waterproofing via lab or field adhesion tests, or both.

ATTENTION

Property of Sto Corp. All Rights Reserved.

www.stocorp.com

Sto products are intended for use by qualified professional contractors, not consumers, as a component of a larger construction assembly as specified by a qualified design professional, general contractor or builder. They should be installed in accordance with those specifications and Sto's instructions. Sto Corp. disclaims all, and assumes no, liability for on-site inspections, for its products applied improperly, or by unqualified persons or entities, or as part of an improperly designed or constructed building, for the nonperformance of adjacent building components or assemblies, or for other construction activities beyond Sto's control. Improper use of Sto products or use as part of an improperly designed or constructed larger assembly or building may result in serious damage to Sto products, and to the structure of the building or its components.

STO CORP. DISCLAIMS ALL WARRANTIES EXPRESSED OR IMPLIED EXCEPT FOR EXPLICIT LIMITED WRITTEN WARRANTIES ISSUED TO AND ACCEPTED BY BUILDING OWNERS IN ACCORDANCE WITH STO'S WARRANTY PROGRAMS WHICH ARE SUBJECT TO CHANGE FROM TIME TO TIME. For the fullest, most current information on proper application, clean-up, mixing and other specifications and warranties, cautions and disclaimers, please refer to the Sto Corp. website, www.stocorp.com.

