

Joe DiMaggio Children's Hospital

Learning from the Past to Achieve
Exceptional Success

Facades



At a beloved South Florida Hospital, StoPowerwall® ExtraSeal® integrates old and new construction while providing peace of mind in the process.

Sto Products	StoPowerwall® ExtraSeal® with Sto Crack Defense
Applicator	KHS&S Contracting
Architect	C.B. Goldsmith & Associates HKS Architects
Distributor	Foundation Building Materials
Media Contact	Schoeny Jones: sjones@stocorp.com Julie Chalpan: julie@focusunlimitedpr.com



The A.R.T. of reStore®

A	Aesthetics
R	Repair
T	Transformation

DiMaggio Children's Hospital in Hollywood, Florida, once faced challenges with the installation of a stucco facade on their original building. As they embark on an expansion and remodel, they looked at alternative solutions to ensure the building withstood the elements. The new team settled on a Sto solution StoPowerwall® ExtraSeal® with Sto Crack Defense, a direct applied stucco system to CMU wall construction that features Sto ExtraSeal® air and water-resistive barrier and an added fortification layer to minimize surface cracking.

As one of the largest children's hospitals in the region, families in South Florida depend on Joe DiMaggio Hospital. The entire team understood the importance of getting the expansion right. "There are few places nationwide where families can go to receive the highly specialized pediatric care that is closer to home than Joe DiMaggio Children's Hospital," explained Kevin Janser, CEO of Joe DiMaggio Children's Hospital Foundation.

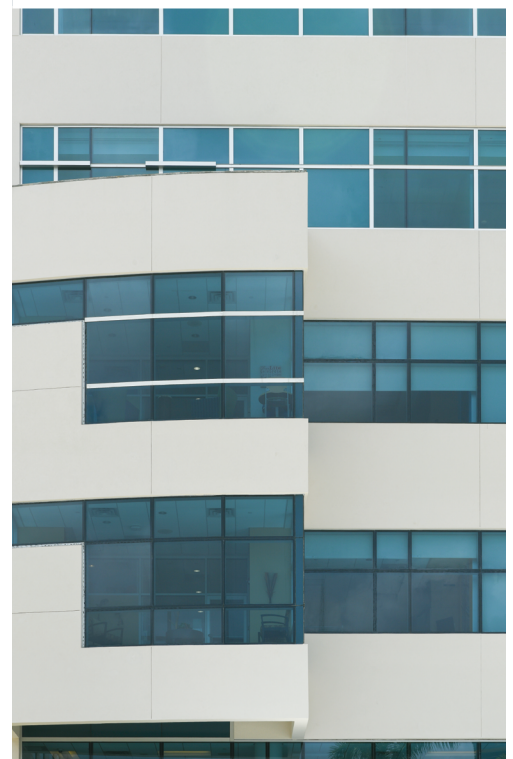
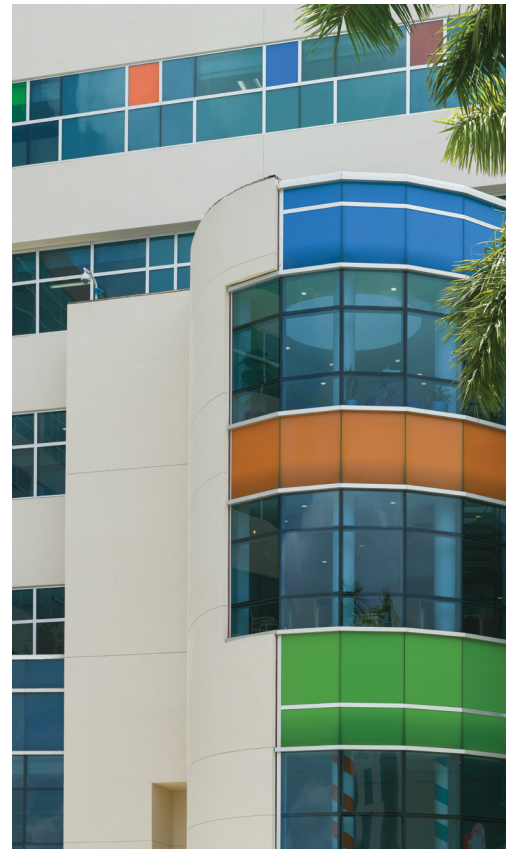
The project, essential to the hospital's long-term success and to the community's continued well-being, was equal parts expansion and renovation. A four-floor addition would be added atop the existing four-floor building, which would need its stucco completely replaced. An efficient team was built that included General Contractors Robins & Morton, led by Robert Creswick; KHS&S Contracting, led by partner Robert Luker handling the application of the exterior facade; Robert Whitcomb of C.B. Goldsmith & Associates, overseeing the original structure's restoration, and HKS Architects, who was responsible for the expansion.

"There are few places nationwide where families can go to receive the highly specialized pediatric care that is closer to home than Joe DiMaggio Children's Hospital."

Kevin Janser | CEO | Joe DiMaggio Children's Hospital Foundation

The first step was to remove the old stucco, which had originally been installed without properly leveling the building. Instead, the installers attempted to achieve an even finish by layering on stucco in thicknesses three times the published code requirement value in ASTM C926. Luker's team at KHS&S Contracting was determined to do the job properly and with only the best products. This involved a Level 4 reStore, which in Sto's A.R.T. of reStore® approach refers to a complete removal and reclad of the entire facade.

The choice to use a StoPowerall ExtraSeal cladding system was made carefully and thoughtfully. It was informed by the team's experience on other projects and the valuable lessons learned from the original building's stucco installation. According to Whitcomb, Memorial Healthcare Systems was looking for a solution that could make them feel comfortable and allay their fears: "The owner wanted a tested system that could be warranted. The StoPowerwall ExtraSeal system had additions like Sto Crack Defense that was the belt and suspenders that gave the owner more comfort."





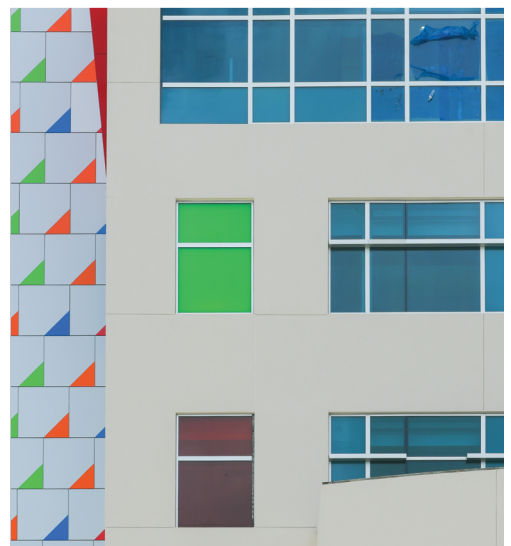
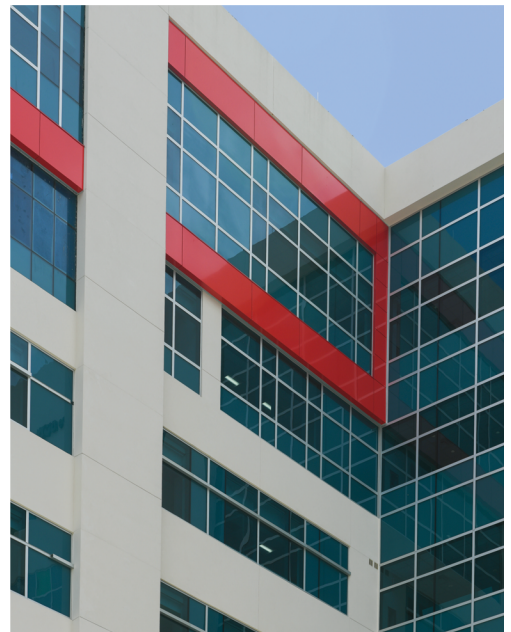
Once the old stucco was removed, application of the StoPowerwall ExtraSeal system could begin on both the old building and the new addition. Luker's started by ensuring that the building was level and plum using Sto Wall Leveler and Patch to achieve an even, level surface. In some places, this required using as much as an inch and a half of leveler. Next was the application of Sto ExtraSeal applied as a skim coat, this is the cementitious waterproofing layer. Sto Extraseal was then applied again as the scratch coat and lastly Sto Powerwall Stucco as the stucco brown coat with a nominal thickness not to exceed 5/8 inch thick which is in compliance with the ASTM C926 code requirements.

"The owner wanted a tested system that could be warranted. The StoPowerwall ExtraSeal system had additions like Sto Crack Defense that was the belt and suspenders that gave the owner more comfort."

Robert Whitcomb | C.B. Goldsmith & Associates

That, in turn, was followed by the Sto Crack Defense, providing the team with that extra comfort level against surface cracking which reduces maintenance and repair costs substantially and extends the life of the cladding while allowing for a wide variety of aesthetics. Finally, after a primer coat, they finished everything off with the color integrated Stolit® 1.0 textured acrylic finish.

The old building and new addition were seamlessly integrated, bring the architects' vision to life. Memorial Healthcare Systems can be confident that, with StoPowerwall ExtraSeal and Sto Crack Defense, they have taken steps to prevent past issues from recurring. And most importantly, Joe DiMaggio Children's Hospital will continue to serve the children of South Florida for decades to come.



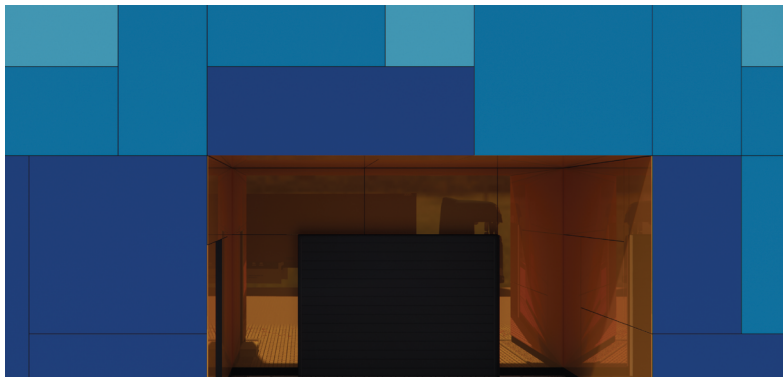


The Confidence to Follow Your Vision

Inspiration favors the open mind. Sto allows your creative exploration to take you anywhere. Our proven products give you the unmatched freedom and ability to achieve your vision in any color, any form, any texture and any material.

StoPowerwall® ExtraSeal® with Sto Crack Defense provides a beautiful aesthetic while ensuring the water penetration and air leakage resistance that can set your mind at ease. With having confidence that the system will perform, designers can pursue almost limitless design options without fear of compromise and enjoy a beautiful and longer lasting building.

Creativity Begins. **Sto Finishes.®**



Sto Americas

Sto Corp.

3800 Camp Creek Pkwy
Building 1400, Suite 120
Atlanta, GA 30331
USA

Phone 1-800-221-2397
www.stocorp.com