



Building with conscience.

StoVentec[®] Fiber Cement

Ventilated Rainscreen[®] Cladding Systems

Facades



Interiors



StoVentec Fiber Cement is a unique panel system with the added benefits of a rainscreen design, providing lasting weather protection and superior value. This complete, single source back-ventilated rainscreen cladding system is designed and engineered by Sto, with all exterior wall components working seamlessly together for enhanced performance and durability.



More than an innovative product, a complete system.

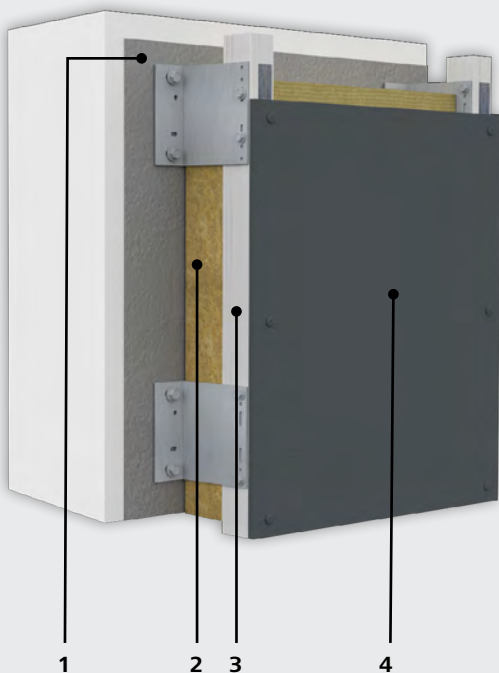
For over 30 years, Sto has developed state-of-the-art rainscreen cladding facade systems trusted by architects, specifiers, and installers. Adding Fiber Cement to our offering provides a high-performance, end-to-end system that seamlessly blends aesthetic brilliance and durability.

StoVentec Fiber Cement is a high-performance Rainscreen® wall system designed for durability and efficiency. By integrating superior air and weather tightness with advanced thermal performance and fire protection, it sets a new standard for modern construction. This innovative system features noncombustible continuous exterior insulation, a robust air and water-resistant barrier, StoVentro sub-construction, and high-density fiber cement panels. With its open-jointed design, StoVentec delivers low maintenance, versatile aesthetics, and exceptional all-around performance.

Sto even offers a pre-engineered solution based on your design pressure requirements. This prescriptive assembly simplifies installation and provides the necessary materials for optimal results while providing cost transparency.

StoVentec Fiber Cement

- Standard Panel size of 4 x 8 or 10-foot
- 14 curated colors to create custom patterns
- Design flexibility – panels can be installed horizontally or vertically, with the option of stacked or staggered layouts.
- Code compliant, fully tested against fire, water and wind
- Pre-engineered option for quick and easy install in all weathers
- Exterior or interior use
- Single source warranty



System Components

- 1. StoGuard® Air & Water-Resistive Barrier System** – Featuring Sto AirSeal®, the StoGuard® system provides seamless and fully integrated air and moisture control.
- 2. Thermal Insulation** – ROCKWOOL Cavityrock® mineral wool made of non-combustible fiber. Custom insulation thicknesses are available to meet design thermal requirements.
- 3. StoVentro Sub-Construction** – An engineered system consisting of StoVentro Brackets with vertical StoVentro L and T-Profiles to provide the structural link between the facade and supporting wall construction.
- 4. StoVentec Fiber Cement Panel** – A durable, high-density, noncombustible fiber-cement wall cladding panel conforming to ASTM C1186 Type A, Grade IV.





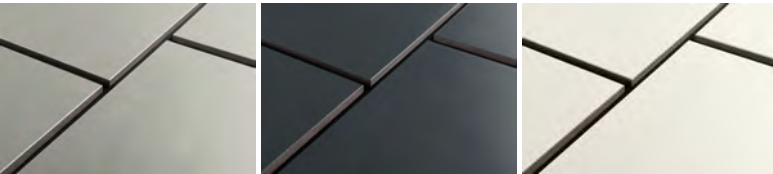
Aesthetically speaking, anything is possible.

StoVentec Fiber Cement offers a versatile palette of smooth or textured finishes and vibrant colors, allowing for tailored designs that suit any project. Available with or without a pigmented body, the color remains consistent throughout the panel, ensuring long-lasting beauty and reducing the need for maintenance. Additionally, StoVentec's flexible design options enable custom shapes and sizes, providing endless possibilities for creative facades and interiors. Its hidden fastening system enhances clean lines for a modern look, while the durable material maintains its appearance over time with minimal upkeep. Whether for contemporary facades or artistic interiors, the system allows you to achieve striking, lasting designs.

StoVentec Fiber Cement is customizable for projects ranging from modern urban skyscrapers to charming residential designs.

Primara Line

Featuring a grey-bodied core and an opaque surface finish, Primara Line panels have a smooth texture with a light sanded grain, adding subtle depth and a refined look to any facade.

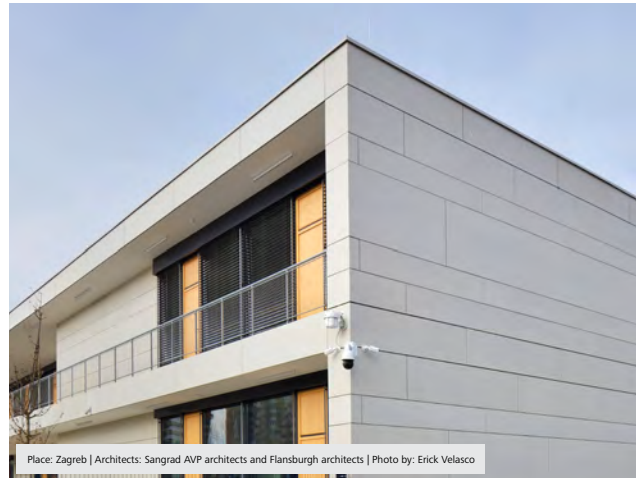


Strata Line

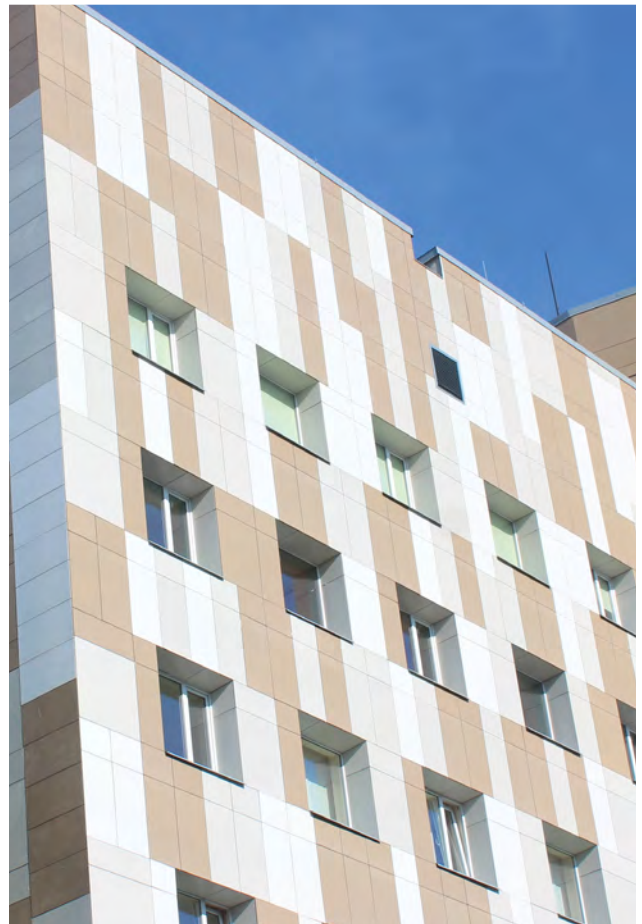
Designed with a pigmented body and an opaque finish, Strata Line panels provide an ultra-smooth texture with a delicate linear effect in the paint, creating a sleek, modern aesthetic.



Both collections are crafted to offer durability, versatility, and style, ensure a lasting impression in any application. To view the collection scan this QR code or visit www.stocorp.com/stoventec-fiber-cement-color-chart/.



Place: Zagreb | Architects: Sangrad AVP architects and Flansburgh architects | Photo by: Erick Velasco



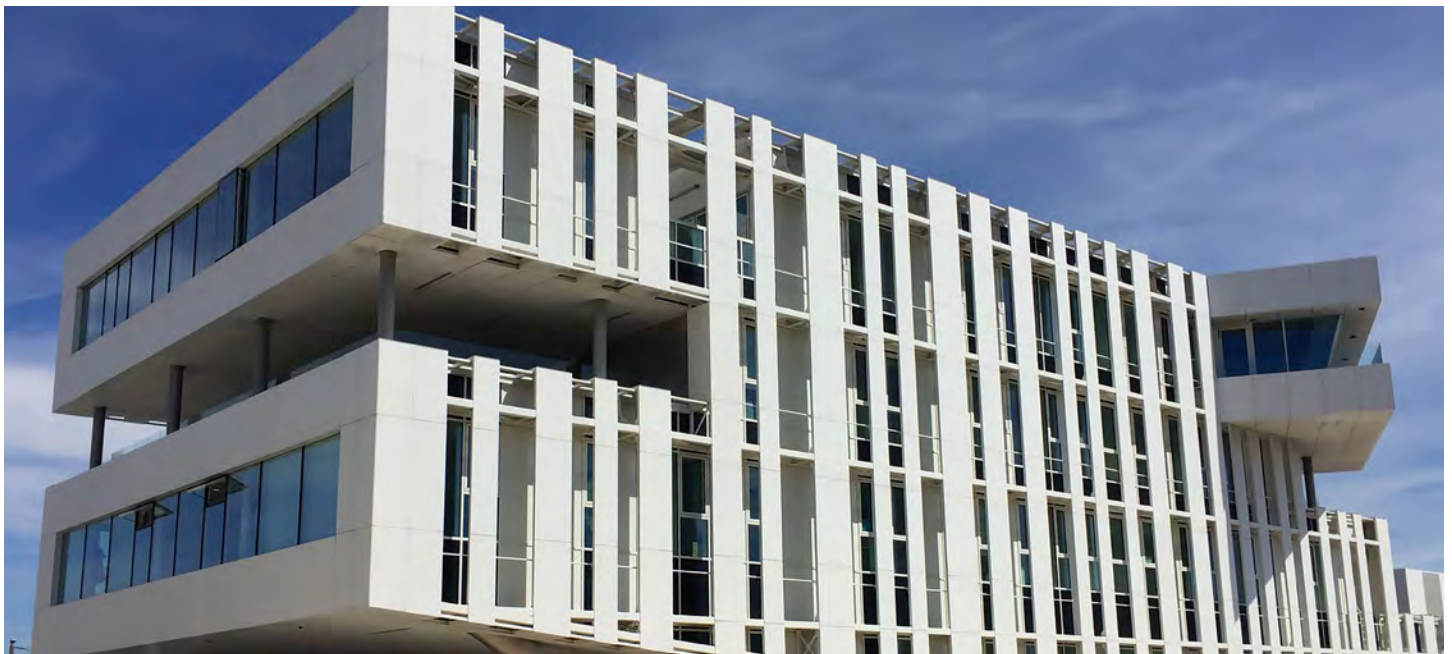




From design through construction and beyond, Sto has your back.

StoVentec Fiber Cement is built with durable materials and precision engineering for long-lasting performance, all backed by our single-source warranty. Choosing StoVentec means selecting a complete, integrated system that includes facade cladding, insulation, sub-construction, and air and water-resistive barrier - providing unparalleled consistency and reliability.

At Sto, we believe that excellent service is just as important as high-quality products and systems. A dedicated Sto project manager will oversee your entire project, from initial design to final installation, ensuring seamless execution and total satisfaction. Our support doesn't stop with the product or system - it extends through every stage of your project, making your experience as smooth as possible.



Our Services Include:

- **Specifier and Installer Consultation:** Work closely with our experts to find the best solution for your unique project needs, particularly for custom designs and applications.
- **On-site and Live Construction Support:** Our team can schedule site visits and remote meetings to assist in the smooth execution of your project.
- **Structural Analysis and Shop Drawings:** We can coordinate third-party professional engineering services to tailor Ventec products and systems according to project-specific criteria and provide detailed shop drawings if needed. We also offer pre-engineered systems to enable prescriptive approaches to save on engineering costs.
- **Estimation of Quantities:** We offer online tools and direct support to assist estimators and contractors in material takeoffs and can also provide preliminary rough order of magnitude estimates for budgetary purposes.



Place : Cyprus | Architect : Varda Studio Architects



Innovation in Every Detail

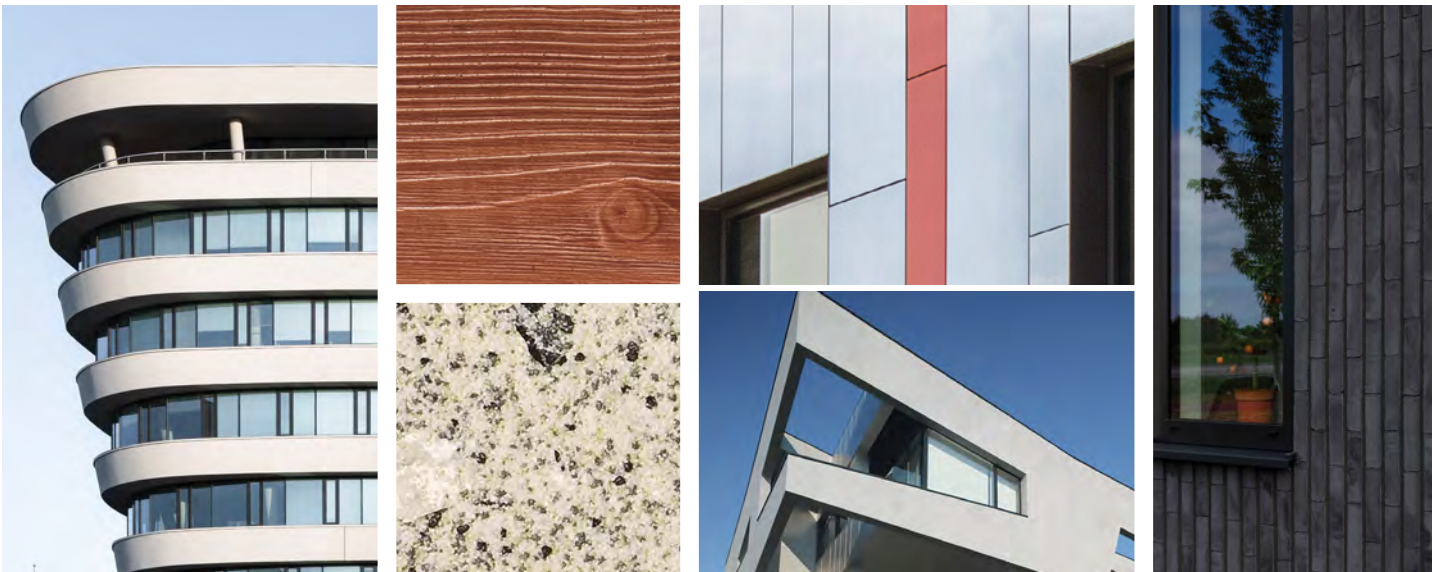
With StoVentec Fiber Cement, design becomes a dialogue—between material and emotion, form and function, creativity and performance. Every project begins with a vision, and Sto empowers you to bring it to life in any color, any texture, any material, and any form.

Engineered for design freedom and uncompromising performance, StoVentec Fiber Cement allows you to express your vision without limits, whether you're pursuing minimalist lines or intricate patterns. Its compatibility and continuity ensure that beauty and functionality work hand in hand, creating a seamless integration across the building envelope. Built to withstand time and nature, StoVentec delivers enduring performance, empowering you to design facades that last.

Experience the connection between material and meaning with StoVentec Fiber Cement.

To learn more, call 1-800-221-2397 or visit www.stocorp.com/stoventec-fiber-cement/

Creativity Begins. **Sto Finishes.**®



Sto Americas

Sto Corp.

3800 Camp Creek Pkwy
Building 1400, Suite 120
Atlanta, GA 30331
USA

Phone 1-800-221-2397
www.stocorp.com

ATTENTION

Sto products are intended for use by qualified professional contractors, not consumers, as a component of a larger construction assembly as specified by a qualified design professional, general contractor or builder. They should be installed in accordance with those specifications and Sto's instructions. Sto Corp. disclaims all, and assumes no, liability for on-site inspections, for its products applied improperly, or by unqualified persons or entities, or as part of an improperly designed or constructed building, for the nonperformance of adjacent building components or assemblies, or for other construction activities beyond Sto's control. Improper use of Sto products or use as part of an improperly designed or constructed larger assembly or building may result in serious damage to this product, and to the structure of the building or its components. **STO CORP. DISCLAIMS ALL WARRANTIES EXPRESSED OR IMPLIED EXCEPT FOR EXPLICIT LIMITED WRITTEN WARRANTIES ISSUED TO AND ACCEPTED BY BUILDING OWNERS IN ACCORDANCE WITH STO'S WARRANTY PROGRAMS WHICH ARE SUBJECT TO CHANGE FROM TIME TO TIME.** For the fullest, most current information on proper application, clean-up, mixing and other specifications and warranties, cautions and disclaimers, please refer to the Sto Corp. website, www.stocorp.com.