



StoPanel[®] with Pella[®] Impervia[®] Windows

Prefabricated, Engineered Wall System
with integrated Pella window system

Facades



StoPanel has partnered with Pella Windows to develop a fully integrated, tested prefabricated wall and window system. The StoPanel system is fully integrated with Pella[®] Impervia[®] fiberglass windows and tested to high standards.





StoPanel and Pella Windows have teamed up to develop a new concept - a fully integrated and tested prefabricated panel and window system. This simplifies prefabrication of complete wall assemblies by pre-installing Pella's receptor system in the factory. Fastened in the "dry zone," featuring double line sealant, and fully tested to ASTM standards to verify performance, opportunity for on-site construction defects is minimized.

Simplified Installation with Proven Performance

- StoPanel and Pella Impervia window package tested* as a full system to meet a Design Pressure of 50 PSF.
- Window receptors installed in a StoPanel affiliate's factory to ensure consistency and speed window installation on site.
- All jobsite work is done from the interior to simplify and minimize equipment needs and maximize worker safety.
- Panels are light weight, reducing loads impacting overall structure.

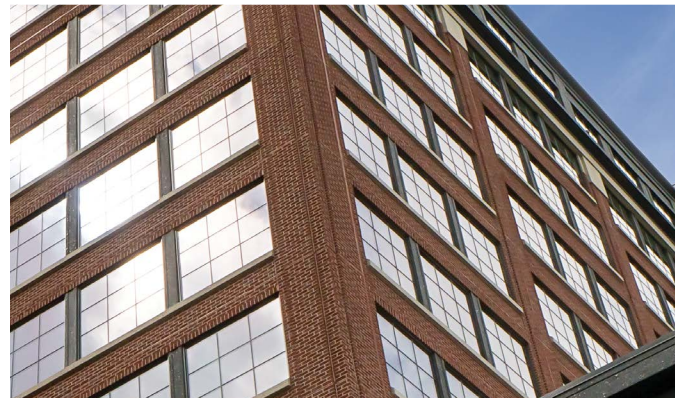
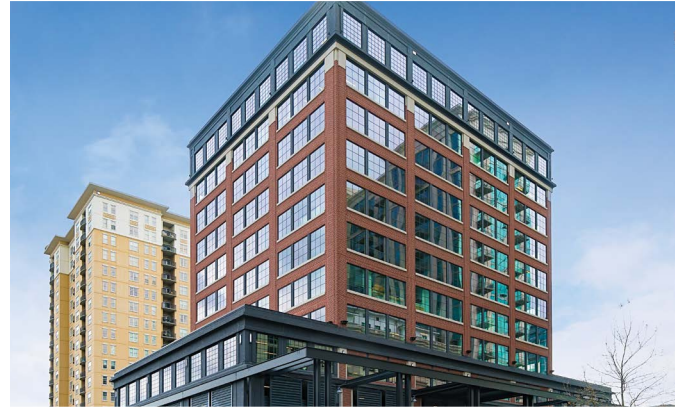
* Tested with StoPanel Classic NEXT ci

Strong, Durable, and Beautiful

- Made of fiberglass, Pella Impervia is naturally environmentally friendly and sustainable.
- Pella's fiberglass material withstands high heat, low temperatures, and everything in between without warping or becoming brittle.
- Virtually maintenance free with a powder-coat painted finish that comes in today's most popular color palette.
- Modern, narrow sightlines can be used for any aesthetic need from contemporary to traditional.

Manufactured to the Highest Industry Standards

- Speed, value, and quality derived from off-site production of wall assembly.
- Exterior wall panels produced by StoPanel affiliates throughout the U.S. and Canada.
- Complete system tested to ASTM E283, ASTM E547, and ASTM E330 standards.



Sto Americas

Sto Corp.

3800 Camp Creek Pkwy
Building 1400, Suite 120
Atlanta, GA 30331
USA

Phone 1-800-221-2397
www.stocorp.com

Pella Corporation

102 Main Street
Pella, IA 50219
Phone 864-908-6900
www.pella.com
www.professional.pella.com
Email: Bryan Cain
cainbs@pella.com

ATTENTION

Sto products are intended for use by qualified professional contractors, not consumers, as a component of a larger construction assembly as specified by a qualified design professional, general contractor or builder. They should be installed in accordance with those specifications and Sto's instructions. Sto Corp. disclaims all, and assumes no, liability for on-site inspections, for its products applied improperly, or by unqualified persons or entities, or as part of an improperly designed or constructed building, for the nonperformance of adjacent building components or assemblies, or for other construction activities beyond Sto's control. Improper use of Sto products or use as part of an improperly designed or constructed larger assembly or building may result in serious damage to this product, and to the structure of the building or its components. **STO CORP. DISCLAIMS ALL WARRANTIES EXPRESSED OR IMPLIED EXCEPT FOR EXPLICIT LIMITED WRITTEN WARRANTIES ISSUED TO AND ACCEPTED BY BUILDING OWNERS IN ACCORDANCE WITH STO'S WARRANTY PROGRAMS WHICH ARE SUBJECT TO CHANGE FROM TIME TO TIME.** For the fullest, most current information on proper application, clean-up, mixing and other specifications and warranties, cautions and disclaimers, please refer to the Sto Corp. website, www.stocorp.com.