

# StoPanel® Systems

Prefabricated, Engineered Wall Systems  
using Sto Panel Technology®

## Facades



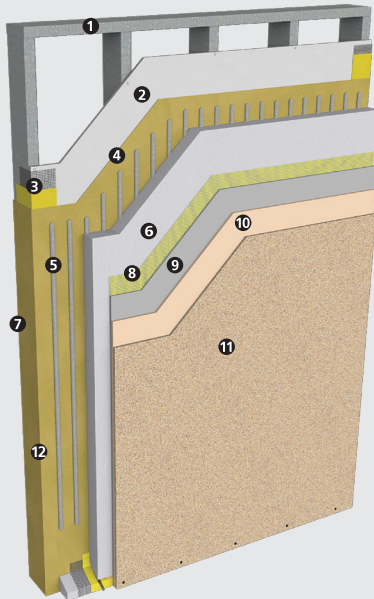
StoPanel® systems provide a systemized approach to panelized construction offering many benefits over traditional pre-cast panels, including speed, value and superior performance. All panels are lightweight, energy efficient, durable and are available in a wide variety of aesthetic options. StoPanel systems are the preferred choice for new construction and renovation projects.







# StoPanel Systems



## StoPanel Classic NExt ci

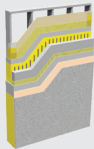
Energy-efficient, lightweight pre-fabricated wall panel featuring StoGuard® waterproof air barrier, continuous insulation and Sto's patented drainage wedge design.

1. Cold Formed Steel
2. Glass Mat Gypsum Sheathing
3. StoGuard® Joint Treatment
4. StoGuard® Air & Moisture Barrier
5. Sto Adhesive
6. Sto Continuous Insulation
7. Sto Gold Coat® membrane wraps around panel edges
8. Sto Mesh for impact resistance
9. Sto Base Coat and Mesh back-wrapped on to panel edges
10. Sto Primer improves finish coat coverage and color uniformity
11. Sto Finish in a wide variety of aesthetic options
12. Final cover layer of Sto Gold Coat® on all panel edges

Sto Dual Seal Technology delivers two layers of protection for added durability and energy efficiency. StoGuard fluid-applied membrane and exterior cladding provide panel face protection against moisture and air leaks, while double silicone sealant joints tie the panels together.

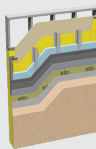
### StoPanel Impact ci

Sto's hurricane impact resistant system, with all the benefits of StoPanel Classic NExt ci plus Miami Dade County Notice of Acceptance (NOA).



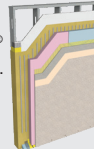
### StoPanel Precast ci

Insulated pre-cast construction at a fraction of the weight. Save money on structural materials and installation costs. Includes StoGuard® waterproof air barrier.



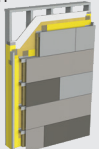
### StoPanel XPS ci

This lightweight panel is both energy efficient and durable, utilizing an XPS continuous insulation layer and a StoGuard® waterproof air barrier.



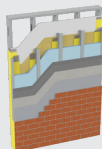
### StoPanel Dri-Design®

A single-skin metal panel system that's fully customizable to achieve the look you want with a unique patented interlocking design that provides superior water management.



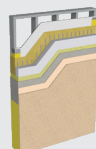
### StoPanel Brick ci

An insulated brick facade that is lightweight and includes StoGuard® waterproof air barrier as standard. Designed with the ability to comply with various building codes.



### StoPanel Classic ci

This lightweight pre-fabricated barrier design panel is both energy efficient and durable, with continuous insulation and a StoGuard® waterproof air barrier standard.



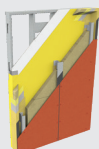
### StoPanel Metal ci

The design freedom of metal panel construction with StoGuard® waterproof air barrier and exterior insulation.



### StoPanel Swisspearl®

A unique fiber cement panel system that offers design flexibility, functionality and innovation. This assembly provides rainscreen design benefits that adds lasting weather protection and superior value.



## Sto Americas

### Sto Corp.

3800 Camp Creek Pkwy  
Building 1400, Suite 120  
Atlanta, GA 30331  
USA

Phone 1-800-221-2397  
www.stocorp.com

### ATTENTION

Sto products are intended for use by qualified professional contractors, not consumers, as a component of a larger construction assembly as specified by a qualified design professional, general contractor or builder. They should be installed in accordance with those specifications and Sto's instructions. Sto Corp. disclaims all, and assumes no, liability for on-site inspections, for its products applied improperly, or by unqualified persons or entities, or as part of an improperly designed or constructed building, for the nonperformance of adjacent building components or assemblies, or for other construction activities beyond Sto's control. Improper use of Sto products or use as part of an improperly designed or constructed larger assembly or building may result in serious damage to this product, and to the structure of the building or its components. **STO CORP. DISCLAIMS ALL WARRANTIES EXPRESSED OR IMPLIED EXCEPT FOR EXPLICIT LIMITED WRITTEN WARRANTIES ISSUED TO AND ACCEPTED BY BUILDING OWNERS IN ACCORDANCE WITH STO'S WARRANTY PROGRAMS WHICH ARE SUBJECT TO CHANGE FROM TIME TO TIME.** For the fullest, most current information on proper application, clean-up, mixing and other specifications and warranties, cautions and disclaimers, please refer to the Sto Corp. website, [www.stocorp.com](http://www.stocorp.com).