

# StoPanel® Swisspearl®

**Prefabricated, Engineered Wall System  
with an innovative, modern facade**

Facades



The StoPanel® Swisspearl® system uniquely combines the convenience and cost-effectiveness of offsite panel manufacturing with the look and feel of an innovative modern aesthetic. Discover the inspiring freedom of creative possibilities offered by the wide range of colors, finishes, custom engravings and sun shading elements. With Swisspearl the design solutions are unlimited.





### Architecturally Inspiring and Sustainable

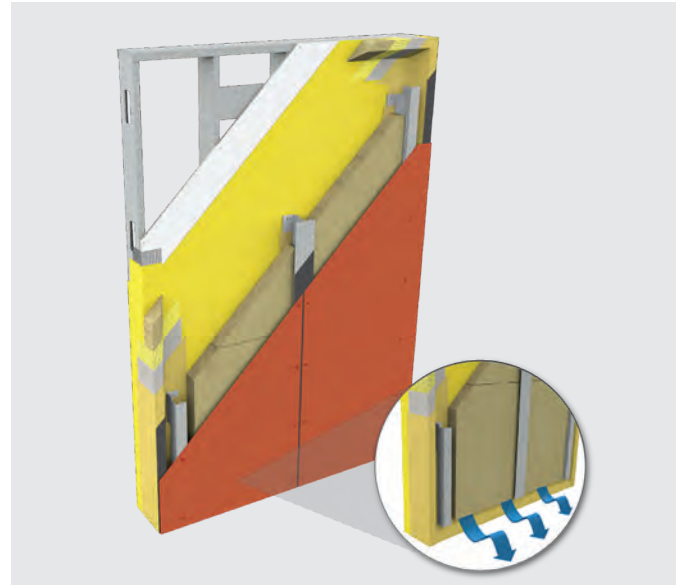
- Combine functionality with innovative design
- Design flexibility, offering a variety of sizes and colors
- ASTM E136 compliant: StoPanel® Swisspearl® is non-combustible
- Minimal construction waste due to sustainable StoPanel pre-fabrication technology

### Durable and Easy to Maintain

- Virtually maintenance free; ventilation space prevents condensation and mildew
- Swisspearl® facades provide extended resistance to weathering for outstanding long-term performance
- Rainscreen design allows unhampered thermal expansion and contraction, effectively controlling thermal stresses

### Manufactured to the Highest Industry Standards

- Speed, value and quality derived from off-site production of wall assembly
- Produced by experienced StoPanel® affiliates located throughout the U.S., Canada and South America
- Meets various building code requirements for continuous insulation (ci) and air and moisture barriers
- Panels are light weight, reducing loads impacting overall structure



#### Sto Americas

##### Sto Corp.

3800 Camp Creek Pkwy  
Building 1400, Suite 120  
Atlanta, GA 30331  
USA

Phone 1-800-221-2397  
www.stocorp.com

#### Swisspearl

CH-8867 Niederurnen  
Phone +41 55 617 11 60

Local Contact:  
Harry Harisberger  
Phone 636 698 5505  
www.swisspearl.com

#### ATTENTION

Sto products are intended for use by qualified professional contractors, not consumers, as a component of a larger construction assembly as specified by a qualified design professional, general contractor or builder. They should be installed in accordance with those specifications and Sto's instructions. Sto Corp. disclaims all, and assumes no, liability for on-site inspections, for its products applied improperly, or by unqualified persons or entities, or as part of an improperly designed or constructed building, for the nonperformance of adjacent building components or assemblies, or for other construction activities beyond Sto's control. Improper use of Sto products or use as part of an improperly designed or constructed larger assembly or building may result in serious damage to this product, and to the structure of the building or its components. **STO CORP. DISCLAIMS ALL WARRANTIES EXPRESSED OR IMPLIED EXCEPT FOR EXPLICIT LIMITED WRITTEN WARRANTIES ISSUED TO AND ACCEPTED BY BUILDING OWNERS IN ACCORDANCE WITH STO'S WARRANTY PROGRAMS WHICH ARE SUBJECT TO CHANGE FROM TIME TO TIME.** For the fullest, most current information on proper application, clean-up, mixing and other specifications and warranties, cautions and disclaimers, please refer to the Sto Corp. website, [www.stocorp.com](http://www.stocorp.com).