

Hub on Campus

West Lafayette, IN

Facades

Project Details

Owner
Core Spaces

General Contractor
Shiel Sexton Company

Architect
Antunovich Associates

Building Type
Student Housing / Apartments

Onsite Assembly Date
May 2019

Panel Type
StoPanel® Classic ci



Project Overview

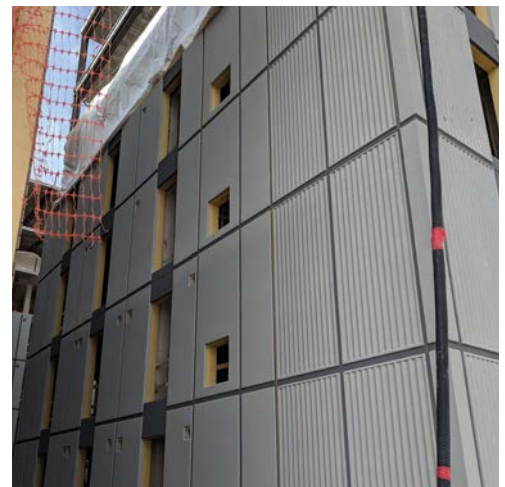
Working in partnership, Grayhawk, LLC and Great Lakes Prefab designed, fabricated and installed 430 StoPanel® Classic ci panels to create the Hub on Campus, a student housing development near Purdue University.

Job Requirements

There were three primary challenges with the Hub on Campus job – time, space and the sheer number of penetrations through the walls. Because the Hub on Campus was student housing that had been promised to arriving students, missing deadlines would be costly. Working within a small footprint with active city streets on two sides, space was limited. Each individual apartment required multiple penetrations, all of which were waterproofed within the fabrication plant in order to provide for the highest quality building envelope.

Smart Solution

Working with an extremely tight project site with limited laydown area and little room for scaffolding, the prefabricated StoPanels were safely installed by a small crew using one central tower crane. Various aesthetic requirements were met by using StoSignature® Brick, and Stolit® 1.5 to replicate a corrugated metal appearance.



859-255-2754
www.grayhawk-ky.com



260-469-8002
www.greatlakesprefabrication.com