



Building with conscience.

# Sto Wall Leveler & Patch

An easy-to-apply product to properly level and remediate out-of-tolerance concrete and block walls.

## Facades



Concrete and block walls often require correction to bring them into tolerance for alignment and flatness. Sto Wall Leveler & Patch is a single component solution that helps you level and remediate out of tolerance walls quickly and properly. Offering high bond strength and low shrinkage, Sto Wall Leveler & Patch is easy to apply and extremely versatile, allowing thin or thick application, depending on the project needs. It is compatible with all stuccos and can even be used as a stand-alone solution.







# Sto Wall Leveler & Patch

## Easy to apply and incredibly versatile.

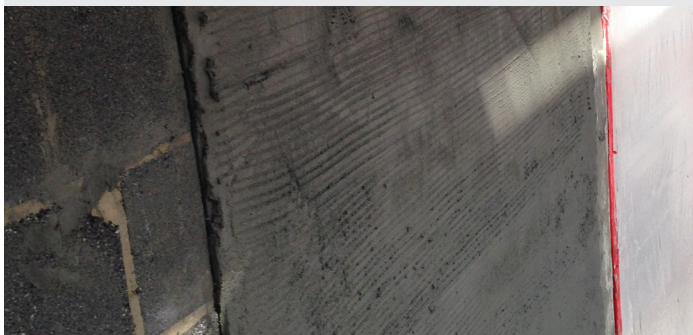
A single component solution, Sto Wall Leveler & Patch doesn't require multiple products to remediate a wall and get it back within tolerance. Plus, Sto Wall Leveler & Patch offers a high degree of versatility. The applicator can apply the product from 1/8" up to 2" thick in just one pass. So, whatever the situation may be, Sto Wall Leveler & Patch helps get the job done quickly and easily.

## Leveling the proper way for long-term performance.

There is a right way and a wrong way to do every project. Adding more stucco may seem like an easy solution for a wall that isn't flat or out of alignment. But according to ASTM C926, the maximum thickness for stucco is 5/8". Sto Wall Leveler & Patch helps you get the substrate into compliance the proper way. It's compatible with all stuccos and greatly reduces the risk of future delamination.



Sto Wall Leveler & Patch is the ideal solution to level and patch small or large areas.



Report	Test Method	Test Criteria	Test Results
Working Time (minutes)			15-30
Comprehensive Strength (psi)	ASTM C109	1 day 7 days 28 days	>3,500 >7,000 >8,000
Shrinkage (%)	ASTM C157	7 days 28 days	<0.1 <0.1
Direct Tensile Bond (psi)	ASTM C1583	28 days	>400 (100% substrate failure)

Typical laboratory testing values for material cured at 73 °F (23 °C) and 50% RH at 12.5% water by weight. Note: To convert psi to Mega Pascal (MPa) multiply by 0.0069. Wet Cure.

Features	Benefits
Polymer-Modified	Increases durability; excellent adhesion.
Non-Sag, Low Slump	Apply up to 2 inches (50 mm) in one lift on vertical surfaces; increases job-site productivity.
Low Shrinkage	Stable bond line; resists perimeter cracking.
Thermally Compatible with Concrete	Prevents delamination caused by temperature changes.
One Component	Factory-controlled polymer-to-cement ratio; ready to use; mixed with water on the job site; no chemical jugs to dispose of.

## Yield and Coverage

Approximately 0.45 ft<sup>3</sup> per 56 lbs bag when mixed with 7.0 pts of water.  
(0.013 m<sup>3</sup> when mixed with 3.3 L water)  
Approximately 21.5 ft<sup>2</sup> per 56 lbs bag, applied at 1/4 inch thick  
(2 m<sup>2</sup> per 25 kg bag, at 6 mm thick)

## Packaging

56 lbs bag (25 kg)

## Shelf Life

12 months in original, unopened, properly stored container.

## Storage

Store in a dry area between 50°F (10°C) and 85°F (29°C). Protect from direct sunlight and extreme heat [90°F (32°C)]. Store off of the ground and protect from rain.

## Sto Americas

### Sto Corp.

3800 Camp Creek Pkwy  
Building 1400, Suite 120  
Atlanta, GA 30331  
USA

Phone 1-800-221-2397  
www.stocorp.com

### ATTENTION

Sto products are intended for use by qualified professional contractors, not consumers, as a component of a larger construction assembly as specified by a qualified design professional, general contractor or builder. They should be installed in accordance with those specifications and Sto's instructions. Sto Corp. disclaims all, and assumes no, liability for on-site inspections, for its products applied improperly, or by unqualified persons or entities, or as part of an improperly designed or constructed building, for the nonperformance of adjacent building components or assemblies, or for other construction activities beyond Sto's control. Improper use of Sto products or use as part of an improperly designed or constructed larger assembly or building may result in serious damage to this product, and to the structure of the building or its components. **STO CORP. DISCLAIMS ALL WARRANTIES EXPRESSED OR IMPLIED EXCEPT FOR EXPLICIT LIMITED WRITTEN WARRANTIES ISSUED TO AND ACCEPTED BY BUILDING OWNERS IN ACCORDANCE WITH STO'S WARRANTY PROGRAMS WHICH ARE SUBJECT TO CHANGE FROM TIME TO TIME.** For the fullest, most current information on proper application, clean-up, mixing and other specifications and warranties, cautions and disclaimers, please refer to the Sto Corp. website, [www.stocorp.com](http://www.stocorp.com).