

The logo for Sto, consisting of the lowercase letters 'sto' in a bold, sans-serif font with a registered trademark symbol.

Building with conscience.

StoCast Brick Color Collection

Resin Cast Brick

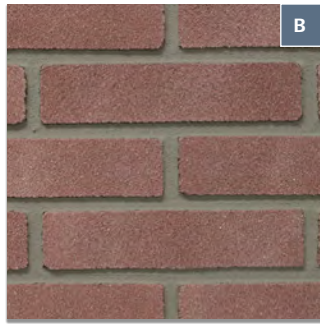
A light gray outline of a house with a gabled roof. Inside the house is a solid gray triangle pointing upwards.

Creativity Begins. **Sto Finishes.**[®]

Brushed/Sand Faced Bricks



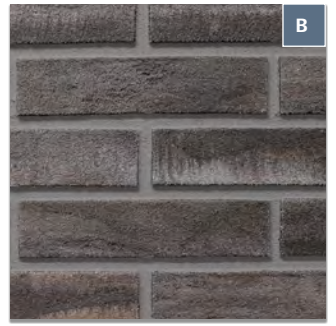
Albi S9.4936 ■ 13



Bordeaux S9.5317 ■ 10



Brighton S9.4748 ■ 12



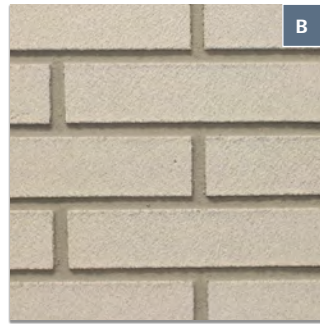
Durham S9.4824 ■ 10



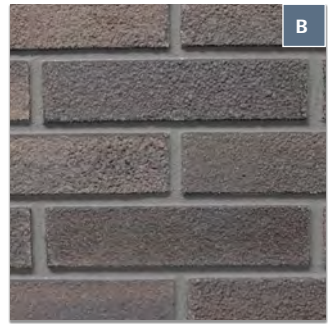
Leiria S9.7227 ■ 11



Mayfield S9.5895 ■ 90



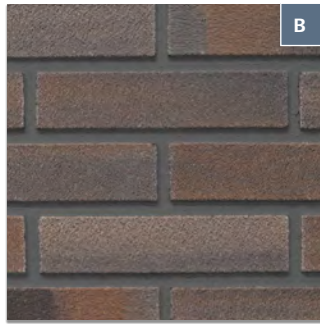
Milwaukee S9.5974 ■ 85



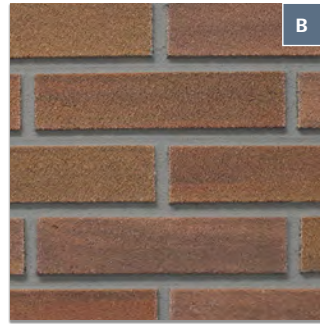
Princeton S9.8419 ■ 11



Richmond S9.6526 ■ 10



Salem S9.6597 ■ 11



Savannah S9.7341 ■ 15

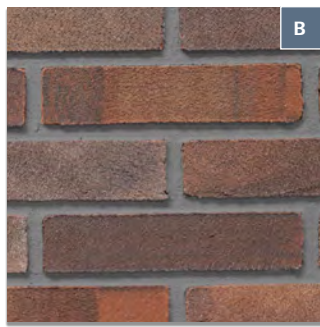


St. Louis S9.5287 ■ 13

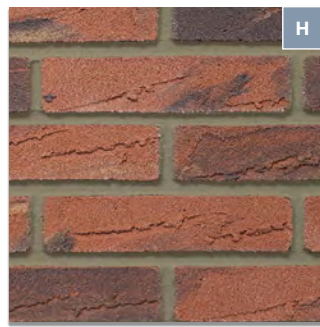
Heavy Texture



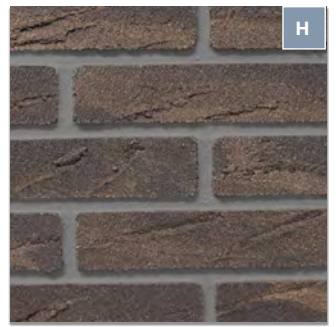
Toulouse S9.6689 ■ 10



Wexford S9.4865 ■ 13



Arlington S9.3900 ■ 13

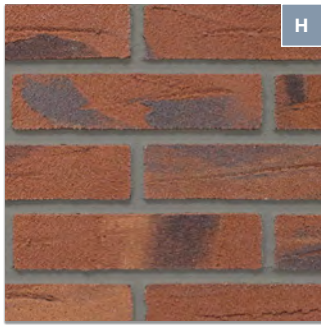


Bainbridge S9.5083 ■ 11

NOTE: Custom colors and custom matching are available in addition to these StoCast Brick standards.

■ 00 Light Reflective Value

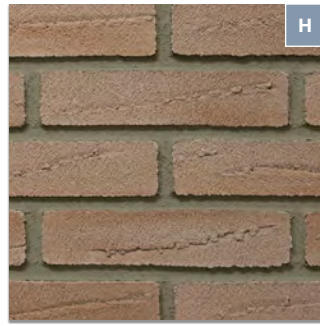
Light Texture



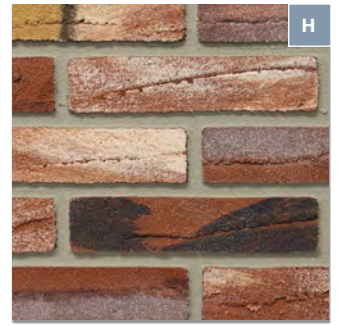
Cambridge S9.3488 ■ 11



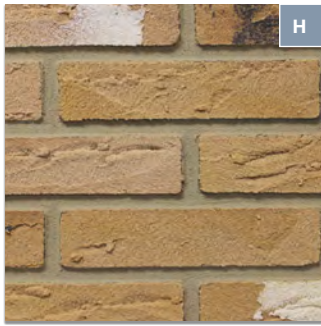
Davenport S9.3812 ■ 65



Kensington S9.5627 ■ 35



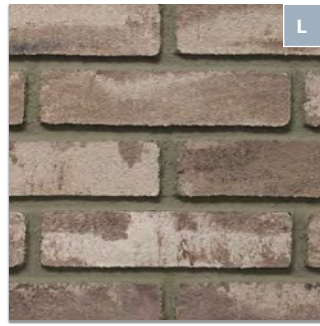
Newberry S9.4988 ■ 13



Westend S9.6527 ■ 44



Winston S9.5575 ■ 14



Harrison S9.6897 ■ 11



Lexington S9.6683 ■ 30

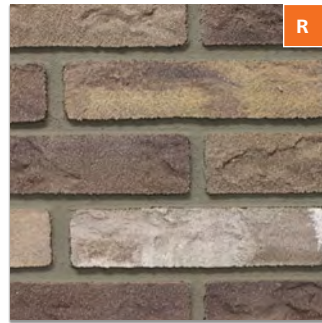
Light Texture

Rolled

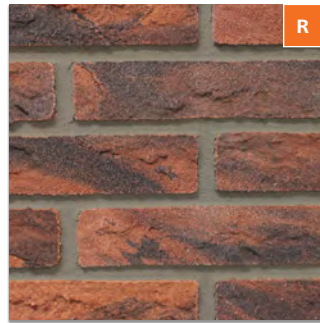
Tumbled



Madison S9.4435 ■ 33



Brandenburg S9.7094 ■ 16

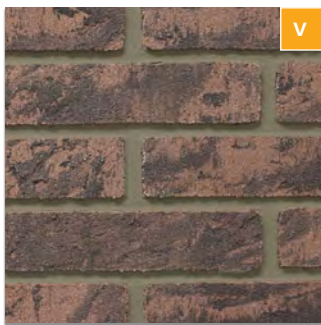


Portmarnock S9.6761 ■ 20



Hamilton S9.6855 ■ 18

Vertical/Blade Cut



Lubeck S9.6118 ■ 17



Sunderland S9.4475 ■ 15

- B **Brushed/Sand Faced Bricks**
- H **Heavy Texture**
- L **Light Texture**
- R **Rolled**
- T **Tumbled**
- V **Vertical/Blade Cut**

NOTE: Custom colors and custom matching are available in addition to these StoCast Brick standards.

■ 00 Light Reflective Value

Flexible, lightweight, sustainable and durable

StoCast Brick is a highly customizable and versatile facade aesthetic that can be used in a variety of Sto wall systems, ceilings, and soffits in both new and existing construction.

StoCast Brick uses the same technology as Sto's traditional acrylic finishes and therefore allows for nearly endless possibilities for customized designs. By using StoCast Brick together with StoTherm® ci, it is possible to combine continuous thermal insulation with the appearance of a traditional brick facade and add design accents to any building

Wide range of looks and design options

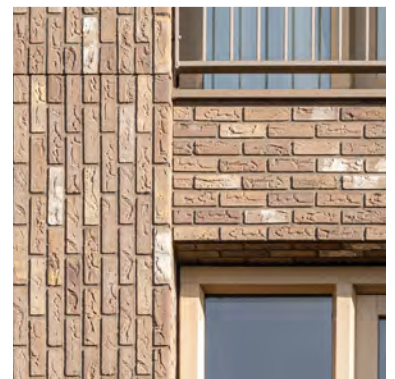
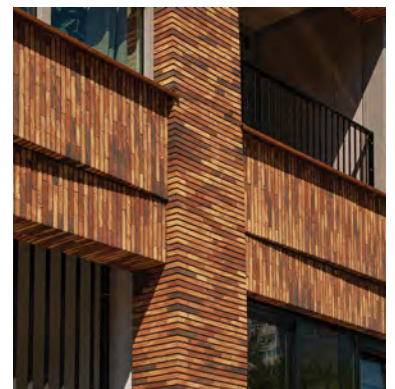
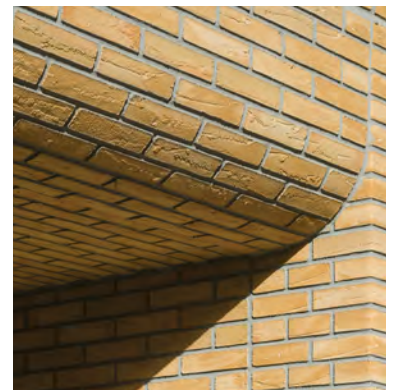
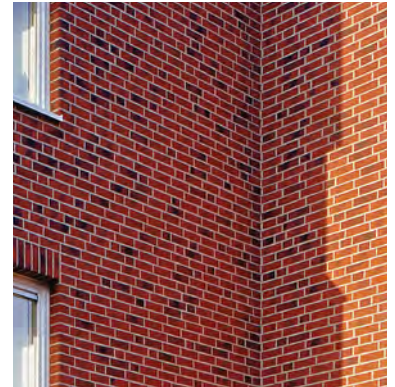
With 30 standard bricks and our custom matching abilities, our large selection of StoCast Brick works with any building style. Whether the design calls for a modern, traditional or rustic design, StoCast Brick is both classic and contemporary.

StoCast Brick joins a wide range of aesthetic options provided by Sto. Designers ask for design freedom but with the assurance that the entire building envelope will perform. With this new outstanding offer, architects can now add brick to the vast aesthetics options Sto offers, while enjoying the continuity and compatibility of the wall cladding throughout the entire building, no matter the aesthetic chosen.

Creativity Begins. **Sto Finishes.**®

Limitations

This chart offers a representation of StoCast Brick color. Actual color of manufactured product may vary slightly from the chart. Furthermore, samples may vary slightly in color and texture from production materials made for a particular job. It is always recommended to install a large sample wall area to assure desired results.



Sto Americas

Sto Corp.

3800 Camp Creek Pkwy
Building 1400, Suite 120
Atlanta, GA 30331
USA

Phone 1-800-221-2397
www.stocorp.com

ATTENTION

Sto products are intended for use by qualified professional contractors, not consumers, as a component of a larger construction assembly as specified by a qualified design professional, general contractor or builder. They should be installed in accordance with those specifications and Sto's instructions. Sto Corp. disclaims all, and assumes no, liability for on-site inspections, for its products applied improperly, or by unqualified persons or entities, or as part of an improperly designed or constructed building, for the nonperformance of adjacent building components or assemblies, or for other construction activities beyond Sto's control. Improper use of Sto products or use as part of an improperly designed or constructed larger assembly or building may result in serious damage to this product, and to the structure of the building or its components. **STO CORP. DISCLAIMS ALL WARRANTIES EXPRESSED OR IMPLIED EXCEPT FOR EXPLICIT LIMITED WRITTEN WARRANTIES ISSUED TO AND ACCEPTED BY BUILDING OWNERS IN ACCORDANCE WITH STO'S WARRANTY PROGRAMS WHICH ARE SUBJECT TO CHANGE FROM TIME TO TIME.** For the fullest, most current information on proper application, clean-up, mixing and other specifications and warranties, cautions and disclaimers, please refer to the Sto Corp. website, www.stocorp.com.