



Building with conscience.

StoSignature® Impression: Stone 10 Stone 20

Application Guide

Facades



Stone provides an elegant aesthetic to a building, either as an accent or a primary facade component. StoSignature® Impression Stone allows you to create a variety of stone textures, ranging from a smooth limestone to a pitted stone.



Impression: Stone 10

Smooth limestone appearance.



Skill Level 2



Surface Description

Description	• Fine textured finish with a smooth limestone appearance.
Product	• Stolit® Freeform or Stolit HDP Freeform or Stolit Lotusan Freeform and Stolit 1.0 • Sto Powerwall Freeform and Sto Powerwall Fine • Sto Powerflex Freeform or Sto Powerflex Silco Freeform and Sto Powerflex Fine
Supplementary Products	• Sto Clear Coat Sealer



Stainless Steel Trowel



Plastic Float

Please note that the details, illustrations, general technical information, and drawings contained in this brochure are only general proposals and details which merely describe the basic functions schematically. They are not dimensionally accurate. Applicator/customer is independently responsible for determining the suitability and completeness for the product in question. Adjacent works are described only schematically. All specifications and information must be adjusted or agreed in the light of local conditions and do not constitute work, detail or installation plans. The technical specifications and product information in the Technical Data Sheets and in system descriptions/approvals must be observed.



Application Steps

Impression: Stone 10

Smooth limestone appearance.



1

Apply Stolit® 1.0 with a clean stainless-steel trowel. Use the trowel to scrape the material down to a uniform thickness no greater than the largest aggregate size.



2

Float the finish to a uniform fine pebbled texture using a plastic float in a figure eight motion. Allow the finish to dry.



3

Knock the tips off the dried finish using the edge of a stainless-steel trowel. Blow/brush all loose particles from surface.



4

Apply Stolit® Freeform as a second layer using a stainless-steel trowel with a medium to sharp angle. Scrape down to an even and tight application. Avoid over-troweling as it can discolor the finish. Allow finish to partially dry.



5

Float the finish using a dry plastic float in a non directional manner to help even out the thickness of the finish. Note: some drag lines will still be visible.



6

Allow finish to continue to dry. When the touched finish does not transfer to the fingers, float the finish using a dry float in a nondirectional manner. Note: if float becomes dirty, clean with a dry rag. Allow finish to dry further; and continue this process until no drag lines are visible.

Notes

The color shade used here is SCS AC 16284.

Stone 10 is a very smooth texture finish, which is more susceptible to marring than standard textured finishes. For added mar resistance top coat with two light coats of Sto Clear Coat Sealer, available in matte or gloss, or top coat with StoColor® Acryl Plus in the desired color.

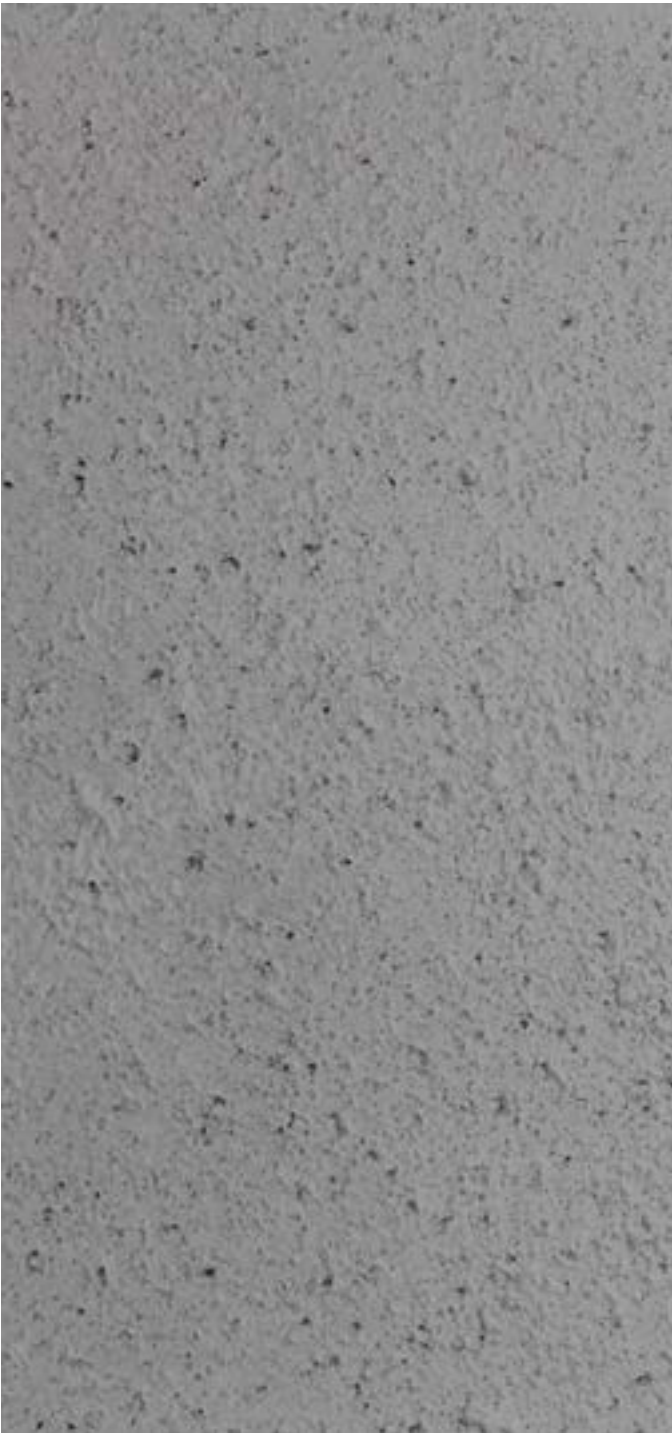


Impression: Stone 20

Pitted appearance.



Skill Level 2



Surface Description

Description	• Fine textured finish with a pitted appearance.
Product	• Stolit HDP 1.0 or Stolit HDP 1.5 • Stolit 1.0 and Stolit 1.5 • Solit Lotusan 1.0 or Stolit Lotusan 1.5 • Sto Powerwall Fine or Sto Powerwall Medium • Sto Powerflex Fine or Sto Powerflex Medium • Sto Powerflex Silco Fine or Sto Powerflex Silco Medium
Supplementary Products	• Sto Clear Coat Sealer • StoPrime® UV



Stainless Steel Trowel



Plastic Float

Please note that the details, illustrations, general technical information, and drawings contained in this brochure are only general proposals and details which merely describe the basic functions schematically. They are not dimensionally accurate. Applicator/customer is independently responsible for determining the suitability and completeness for the product in question. Adjacent works are described only schematically. All specifications and information must be adjusted or agreed in the light of local conditions and do not constitute work, detail or installation plans. The technical specifications and product information in the Technical Data Sheets and in system descriptions/approvals must be observed.



Application Steps

Impression: Stone 20

Pitted appearance.



Apply Stolit 1.0 or 1.5 to the uniform primed surface with a clean stainless-steel trowel to a uniform thickness slightly more than the largest aggregate size.



Allow the finish to partially dry. Float the finish using a dry float in a nondirectional manner. Note: some drag lines will still be visible.



Allow finish to continue to dry. When the touched finish does not transfer to the fingers, float the finish using a dry float in a nondirectional manner. Note: if float becomes dirty, clean with a dry rag. Allow finish to dry further; and continue this process until no drag lines are visible.

Notes

The color shade used here is SCS AC 16284.

Stone 20 is a very smooth texture finish, which is more susceptible to marring than standard textured finishes. For added mar resistance top coat with two light coats of Sto Clear Coat Sealer, available as a matte or gloss sealer, or, top coat with StoColor® Acryl Plus in the desired color.

Notes and Tips

Basic Information:

Achieving good results requires a certain degree of skill and knowledge of the trade, plus preliminary training in the relevant techniques.

Hand-held samples and sample surface areas:

Smaller samples are not always suitable for providing an overall impression of an application technique on larger facade surfaces. For this reason, we highly recommend having the contractor prepare a mock up sample. If this work requires scaffolding, this should be taken into account when creating the sample. The finished sample area should be inspected and accepted by the site manager/building owner. The area provides a reference surface for the contracted service.

Planning the work procedure and how the work is divided up:

Before starting the work, determine who will carry out which tasks such as applying, smoothing or texturing. Carefully plan each coating process, taking into account the weather conditions, and prepare the relevant material.

Uniform Application:

When tradesmen create facade textures or structures, it is important to remember that each tradesman has his or her own signature style. For smaller facade surfaces, if possible same person should create the structure or texture, in order to prevent discrepancies. On large facade surfaces, an experienced team may combine individual application techniques to produce an end result that has a harmonious appearance.

Size of the area:

For large facades, we recommend dividing the surface to be created into smaller partial areas. This ensures that calculations and execution are reliable, and that good application results will be achieved.

Scaffolding:

The scaffolding must be appropriate for the trade processes being carried out and the techniques and tools used: take into account the spacing, the brackets, the projections, and the positioning and height of the scaffolding.

Weather protection:

If the weather is unfavorable during the application and drying processes, it is necessary to put in place appropriate protective measures (rain/solar protection, etc.).

Corner areas/connections:

Carefully plan connections and corner areas. It may be necessary to use a different application technique in these areas. Not every technique is suitable for use up into internal corners, for example.

Areas with fine textured finish:

Float-finishing, smoothing, or sanding smoothed textures requires more extensive substrate preparation than in the case of rough textures. Additional measures for levelling out the substrate may be required depending on its nature.

Color schemes:

Intense or dark colors will emphasize uneven areas of the substrate, textural differences in the finish, and any other effects caused during application. For this reason, a coarser finish texture (aggregate size >2.0) is recommended for facades with intense colors or dark tints. It is important to observe project-related aspects from a technical perspective such as substrate warming and system compatibility. The color shade must be balanced to suit the substrate, system and type of use.

Sto Americas

Sto Corp.

3800 Camp Creek Pkwy
Building 1400, Suite 120
Atlanta, GA 30331
USA

Phone 1-800-221-2397
www.stocorp.com

ATTENTION

Sto products are intended for use by qualified professional contractors, not consumers, as a component of a larger construction assembly as specified by a qualified design professional, general contractor or builder. They should be installed in accordance with those specifications and Sto's instructions. Sto Corp. disclaims all, and assumes no, liability for on-site inspections, for its products applied improperly, or by unqualified persons or entities, or as part of an improperly designed or constructed building, for the nonperformance of adjacent building components or assemblies, or for other construction activities beyond Sto's control. Improper use of Sto products or use as part of an improperly designed or constructed larger assembly or building may result in serious damage to this product, and to the structure of the building or its components. **STO CORP. DISCLAIMS ALL WARRANTIES EXPRESSED OR IMPLIED EXCEPT FOR EXPLICIT LIMITED WRITTEN WARRANTIES ISSUED TO AND ACCEPTED BY BUILDING OWNERS IN ACCORDANCE WITH STO'S WARRANTY PROGRAMS WHICH ARE SUBJECT TO CHANGE FROM TIME TO TIME.** For the fullest, most current information on proper application, clean-up, mixing and other specifications and warranties, cautions and disclaimers, please refer to the Sto Corp. website, www.stocorp.com.