



Building with conscience.

# StoCast Wood

## Application Guide

Facades



Interiors



StoCast Wood are thin, lightweight, flexible resin cast wood grain planks for the decoration and protection of facades. StoCast Wood planks create an authentic wood grain appearance and can be top coated in a wide range of colors. For use in Sto engineered wall cladding systems.





# Content

## Product information

### 03 General information

- 03 Material Orders
- 03 Preliminary work

## Surface Description

### 04 StoCast Wood

### 05 Application Steps

## Details

### 06 StoCast Wood Inside Corner

### 06 StoCast Wood Inside Corner with EPS Trim

### 07 StoCast Wood Outside Corner

### 07 StoCast Wood Outside Corner with EPS Trim

### 08 StoCast Wood Termination at EPS Trim

### 08 StoCast Wood on curved Outside Corner

### 09 StoCast Wood with Open Joint



## General information

### Material and application

StoCast Wood comes untinted and must be to be top coated within 90 days of installation. Joints between the planks of StoCast Wood must also be top coated and cannot exceed 3/8 inch.





# StoCast Wood

## Resin cast wood grain planks



### Surface Description

Description	<ul style="list-style-type: none"><li>• Authentic wood grain appearance.</li></ul>
Products	<ul style="list-style-type: none"><li>• StoCast Wood, StoCast Wood Adhesive,</li><li>• StoColor® Wood Stain.</li></ul>
Possible Color Shades	<ul style="list-style-type: none"><li>• StoColor® Wood Stain is available in 15 standard colors</li><li>• StoColor System; LRV ≥ 20 for StoTherm® ci systems with EPS, GPS or XPS insulation.</li><li>• The minimum permissible light reflectance value (LRV) depends on the substrate, the system, and the product.</li></ul>

**Note:** Reference our StoCast Wood brochure to view the standard StoColor Wood Stains



1/4" x 1/4"  
V-Notched Stainless  
Steel Trowel



Rubber Roller



Sponge



Spatula



Utility Knife



Brush

Please note that the details, illustrations, general technical information, and drawings contained in this brochure are only general proposals and details which merely describe the basic functions schematically. They are not dimensionally accurate. Applicator/customer is independently responsible for determining the suitability and completeness for the product in question. Adjacent works are described only schematically. All specifications and information must be adjusted or agreed in the light of local conditions and do not constitute work, detail or installation plans. The technical specifications and product information in the Technical Data Sheets and in system descriptions/approvals must be observed.



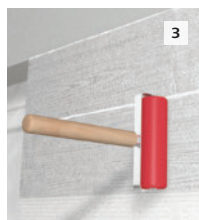
## Application Steps



1 Always starting from the top, only apply as much adhesive as you can quickly cover using a 1/4" x 1/4" V-notched stainless steel trowel. Ensure the material does not skin over.

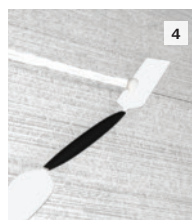


2 The StoCast Wood planks are installed from top to bottom. When needed, flip the StoCast Wood planks on their face and cut planks to size with a utility knife.



3 When initially installing the planks, leave approximately 1/4" space between them, then push them together. Press the planks with a rubber roller to squeeze out the adhesive. This ensures that the joints are completely closed and protected against moisture intrusion.

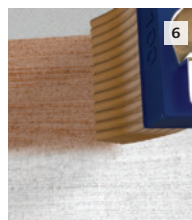
Note: Joint space between planks cannot exceed 3/8 inch (10mm) in width. Joints MUST be top coated with Sto coating. Refer to page 9 for more information.



4 Once the protruding adhesive has slightly hardened, remove it using a spatula. No adhesive should be left on the surface of the board.



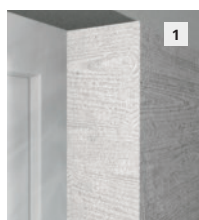
5 Wipe off any remaining adhesive with a moist sponge or rag.



6 Top coat the surface. Make sure the surface is clean and dry, free from dust and debris. Apply two coats of StoColor Wood Stain using a brush or roller. Let the first coat dry before applying the second coat.

Note: Any exterior Sto coating can be used. Color within 90 days of installation.

### Corner Installation

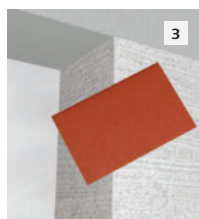


1 Install the planks as noted in steps 1 through 3.

Note: Cut the planks to a slightly longer size to cover the corners.



2 Once the adhesive has slightly hardened, cut the excessive plank length flush using a sharp utility knife.



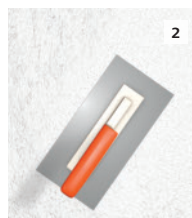
3 Sand any remaining projections or unevenness with fine sandpaper (80-100 grit).

Note: Do not use a power sander.

### Plaster Joint



1 The stain must be completely dry prior to being covered. Cover the edges of StoCast Wood with painter's tape and protect the surface with masking film.

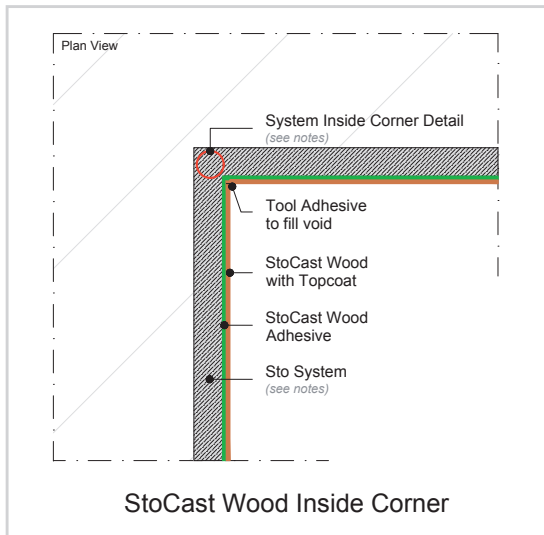


2 Apply the textured finish or coating. Remove the tape before the finish is dry to the touch.

## StoCast Wood

### StoCast Wood Inside Corner

### StoCast Wood Inside Corner with EPS Trim



#### Notes:

##### StoPowerwall®

Bend self-furred lath, attach tight to inside corner, and extend minimum 24-in past corner; or, use Cornerite™ accessory wire tied to metal lath ([Sto Detail No. 4.54](#))

##### StoQuik Silver® Drainscreen

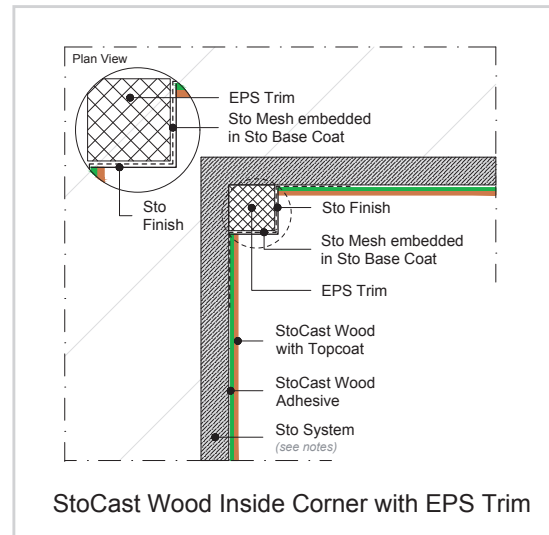
Embed Sto Mesh in Sto Base Coat and fold 8-in each direction ([Sto Detail No. 11.53b DS](#))

##### StoTherm® ci

Double wrap with Sto Mesh embedded in Sto Base Coat and fold 8-in each direction around corner ([Sto Detail No. 52s.54B](#)); or, embed 9.5-in wide Sto Detail Mesh in Sto Base Coat at corner, followed by Sto Mesh embedded in Sto Base Coat around corner.

##### StoVentec® Rainscreen®

Install Sto Edge Protection Profile G and Sto Joint Sealing Tape followed by Sto Mesh 6oz embedded in Sto Base Coat up to corner. Make small straight line cut in finish with scoring knife at corner ([Sto Detail no. 90.R.400](#))



#### Notes:

##### StoPowerwall®

Bend self-furred lath, attach tight to inside corner, and extend minimum 24-in past corner; or, use Cornerite™ accessory wire tied to metal lath ([Sto Detail No. 4.54](#))

Embed Sto Mesh or Sto Detail Mesh in Sto Base Coat over EPS Trim and extend minimum 3-in onto stucco.

##### StoQuik Silver® Drainscreen

Embed Sto Mesh or Sto Detail Mesh in Sto Base Coat over EPS Trim and extend minimum 3-in onto cement board.

##### StoTherm® ci

Embed Sto Mesh or Sto Detail Mesh in Sto Base Coat over EPS Trim and extend minimum 3-in onto Sto EPS Insulation Board.

##### StoVentec® Rainscreen®

Install Sto Edge Protection Profile G and Sto Joint Sealing Tape ([Sto Detail no. 90.R.400](#))

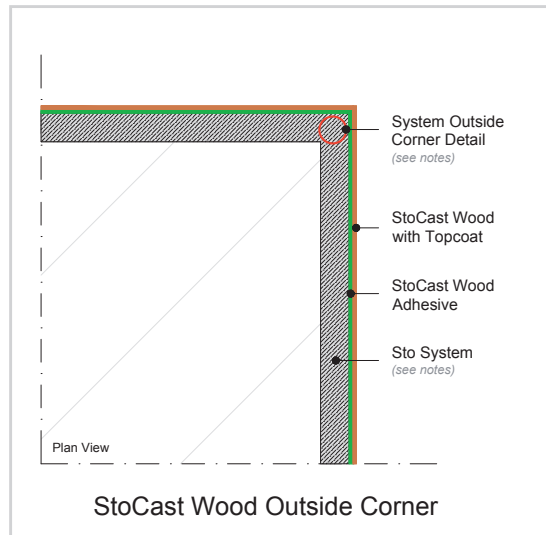
Embed Sto Mesh or Sto Detail Mesh in Sto Base Coat over EPS Trim and extend minimum 3-in onto Sto Carrier Board A+.



## StoCast Wood

### StoCast Wood Outside Corner

### StoCast Wood Outside Corner with EPS Trim



#### Notes:

#### StoPowerwall

Install Stucco Corner Bead Accessory ([Sto Detail No. 4.55](#))

#### StoQuik Silver Drainscreen

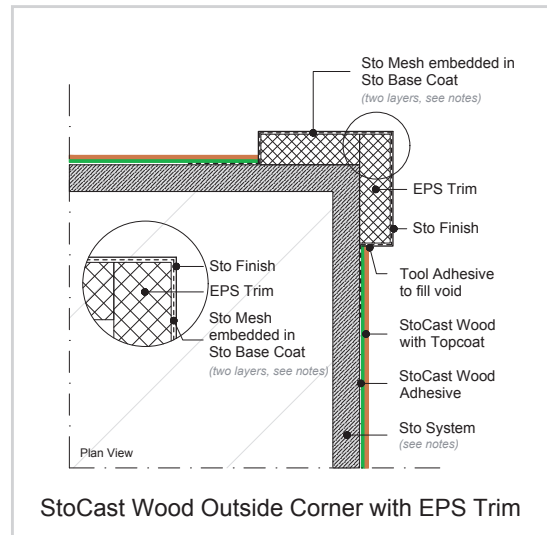
Install Sto-Mesh Corner Bead Standard Accessory ([Sto Detail No. 11.54 DS](#)); or, embed 9.5-in wide Sto Detail Mesh in Sto Base Coat, followed by Sto Mesh embedded in Sto Base Coat around corner ([Sto Detail No. 11.53b DS](#)).

#### StoTherm ci

Install Sto-Mesh Corner Bead Standard Accessory ([Sto Detail No. 52s.54A](#)); or, embed Sto Mesh in Sto Base Coat and fold 8-in each direction ([Sto Detail No. 52s.54B](#))

#### StoVentec Rainscreen

Install Sto-Mesh Corner Bead Standard Accessory ([Sto Detail No. 90.R.410](#))



#### Notes:

#### StoPowerwall

Install Stucco Corner Bead Accessory ([Sto Detail No. 4.55](#))

Double wrap EPS Trim with Sto Mesh or Sto Detail Mesh embedded in Sto Base Coat and extend minimum 3-in onto stucco, followed by second layer extending minimum 8-in onto stucco

#### StoQuik Silver Drainscreen

Double wrap EPS Trim with Sto Mesh or Sto Detail Mesh embedded in Sto Base Coat and extend minimum 3-in onto cement board, followed by second layer extending minimum 8-in onto cement board.

#### StoTherm ci

Double wrap EPS Trim with Sto Mesh or Sto Detail Mesh in Sto Base Coat and extend first layer minimum 3-in onto Sto EPS Insulation Board, followed by second layer extending minimum 8-in onto Sto EPS Insulation Board.

#### StoVentec Rainscreen

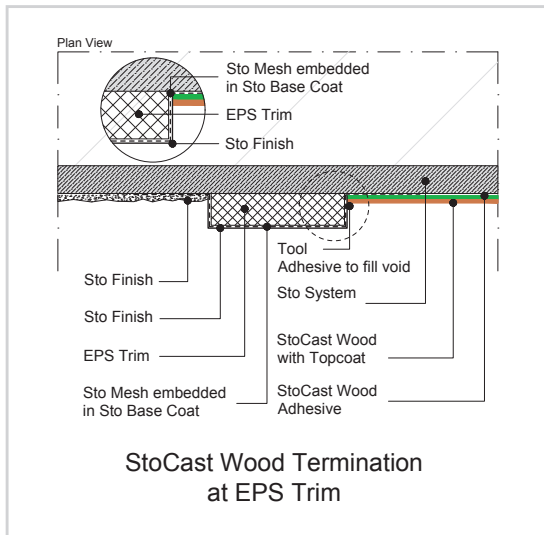
Double wrap EPS Trim with Sto Mesh or Sto Detail Mesh embedded in Sto Base Coat and extend first layer minimum 3-in onto Sto Carrier Board A+, followed by second layer extending minimum 8-in onto Sto Carrier Board A+.



## StoCast Wood

### StoCast Wood Termination at EPS Trim

### StoCast Wood on Radiused Outside Corner



**Notes:**

**StoPowerwall**

Embed Sto Mesh or Sto Detail Mesh in Sto Base Coat over EPS Trim and extend minimum 3-in onto stucco.

**StoQuik Silver Drainscreen**

Embed Sto Mesh or Sto Detail Mesh in Sto Base Coat over EPS Trim and extend minimum 3-in onto cement board.

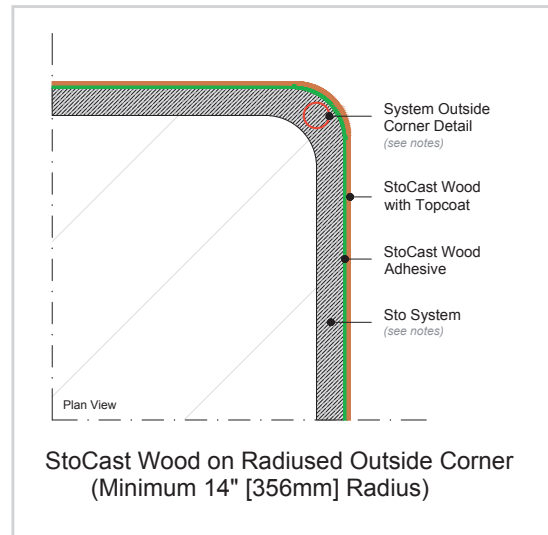
[\(Sto Detail No. 11.04b DS\)](#)

**StoTherm ci**

Embed Sto Mesh or Sto Detail Mesh in Sto Base Coat and extend minimum 3-in onto Sto EPS Insulation Board [\(Sto Detail No. 52s.04\)](#)

**StoVentec Rainscreen**

Embed Sto Mesh or Sto Detail Mesh in Sto Base Coat over EPS Trim and extend minimum 3-in onto Sto Carrier Board A+.



**Notes:**

**StoPowerwall**

Install a wire Bullnose stucco corner lath or accessory (without metal or vinyl nosing, so stucco is the substrate around the curved corner).

**StoQuik Silver Drainscreen<sup>1</sup>**

Install a flexible cement board, then embed 9.5-in wide Sto Detail Mesh in Sto Base Coat, followed by Sto Mesh embedded in Sto Base Coat around corner.

**StoTherm ci**

Embed Sto Mesh in Sto Base Coat, and fold 8-in each direction around pre-formed EPS or XPS insulation board [\(Sto Detail No. 52s.54B\)](#).

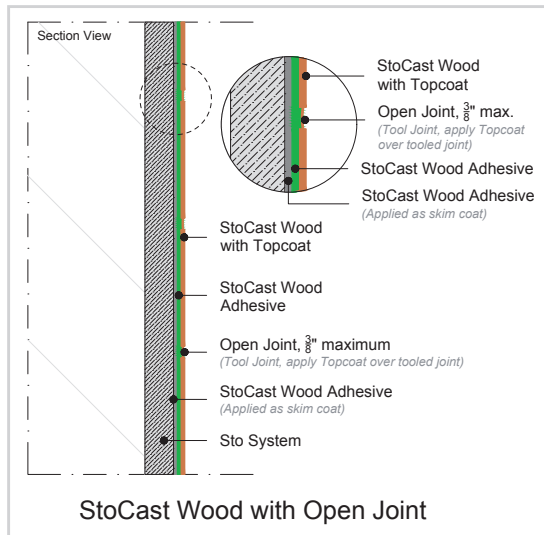
**StoVentec Rainscreen<sup>1</sup>**

Score backside of carrier board.

1. The substrate in these systems cannot accommodate the minimum 14" (356 mm) radius. Refer to cement board or Sto Carrier Board A+ product literature.

## StoCast Wood

### StoCast Wood with Open Joint



Note: where "open" joints are desired, skim coat the entire wall surface with StoCast Wood Adhesive and allow to dry. Then install StoCast Wood planks with joint spacing up to 3/8" (10mm) maximum and tool the excess adhesive between planks with a spatula, masonry pointing tool, or artist's brush.

Apply additional adhesive if needed to fill the joints. The StoColor Wood Stain topcoat (or other exterior StoColor coating) **MUST** be applied over the entire surface, including the tooled joint, in two coats.



## Notes and Tips

### Preliminary work

Details, such as termination at grade, connections to adjacent building elements (window/door frame, window sill, roof, sheet metal, etc.), structural expansion joints, must be planned in advance and coordinated between the relevant parties. The application instructions of Sto are to be observed. Refer to applicable Sto system details.

### Hand-held samples and sample surface areas

Smaller samples are not always suitable for providing an overall impression of an application technique on larger facade surfaces. For this reason, we highly recommend having the contractor prepare a mock up sample. If this work requires scaffolding, this should be taken into account when creating the sample. The finished sample area should be inspected and accepted by the site manager/building owner. The area provides a reference surface for the contracted service.

### Planning the work procedure and how the work is divided up

Before starting the work, determine who will carry out which tasks such as applying, smoothing or staining. Carefully plan each coating process, taking into account the weather conditions, and prepare the relevant material.

### Uniform Color Application

When tradesmen create facade textures or structures, it is important to remember that each tradesman has his or her own signature style. For smaller facade surfaces, and to achieve color consistency, we recommend the same person coats/stains the StoCast Wood. On large facade surfaces, an experienced team may combine individual application techniques to produce an end result that has a harmonious appearance.

### Size of the area

For large facades, we recommend dividing the surface to be created into smaller partial areas. This ensures that calculations and execution are reliable, and that good application results will be achieved.

### Scaffolding

The scaffolding must be appropriate for the trade processes being carried out and the techniques and tools used: take into account the spacing, the brackets, the projections, and the positioning and height of the scaffolding.

### Weather protection

If the weather is unfavorable during the application and drying processes, it is necessary to put in place appropriate protective measures (rain/solar protection, etc.).

### Corner areas/connections

Carefully plan connections and corner areas. It may be necessary to use a different application technique in these areas. Not every technique is suitable for use up into internal corners, for example.

### Handling

Keep the boards flat on the workspace. Do not fold, tear or step on planks.

### Limitations

- Minimum radius of StoCast Wood planks: 14 inches (356mm)
- Use only when surface and ambient temperatures are between 50-85°F (10-29.4°C) during application and drying period.
- Do not use on horizontal or below grade surfaces or where immersion in water may occur.
- Do not use on roofs or roof-like surfaces.
- Not for use as lap siding.
- Use topcoats with Light Reflectance Value (LRV) greater than or equal to 20 when used over StoTherm ci or StoTherm ci XPS Systems.

### Cleaning, repair and maintenance

Refer to the StoCast Wood Repair and Maintenance Guide.



#### Sto Americas

##### Sto Corp.

3800 Camp Creek Pkwy  
Building 1400, Suite 120  
Atlanta, GA 30331  
USA

Phone 1-800-221-2397  
[www.stocorp.com](http://www.stocorp.com)

#### ATTENTION

Sto products are intended for use by qualified professional contractors, not consumers, as a component of a larger construction assembly as specified by a qualified design professional, general contractor or builder. They should be installed in accordance with those specifications and Sto's instructions. Sto Corp. disclaims all, and assumes no, liability for on-site inspections, for its products applied improperly, or by unqualified persons or entities, or as part of an improperly designed or constructed building, for the nonperformance of adjacent building components or assemblies, or for other construction activities beyond Sto's control. Improper use of Sto products or use as part of an improperly designed or constructed larger assembly or building may result in serious damage to this product, and to the structure of the building or its components. **STO CORP. DISCLAIMS ALL WARRANTIES EXPRESSED OR IMPLIED EXCEPT FOR EXPLICIT LIMITED WRITTEN WARRANTIES ISSUED TO AND ACCEPTED BY BUILDING OWNERS IN ACCORDANCE WITH STO'S WARRANTY PROGRAMS WHICH ARE SUBJECT TO CHANGE FROM TIME TO TIME.** For the fullest, most current information on proper application, clean-up, mixing and other specifications and warranties, cautions and disclaimers, please refer to the Sto Corp. website, [www.stocorp.com](http://www.stocorp.com).