



Building with conscience.

StoColor[®] Wood Stain

Standard Wood Color Collection

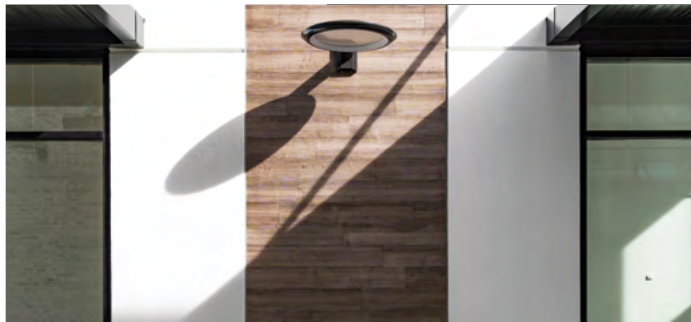
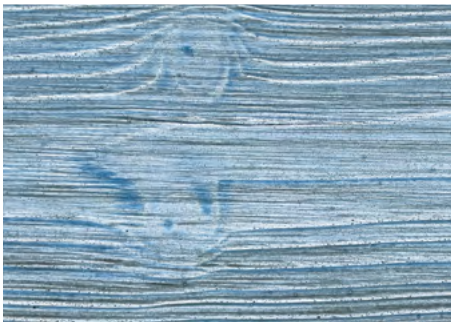
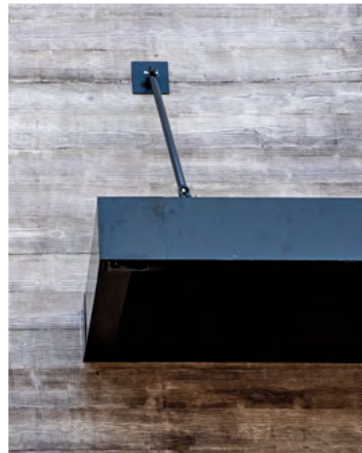
Facades



Interiors



StoColor[®] Wood Stain broadens the already extensive range of creative options for designers with the ability to achieve an authentic wood appearance. The wide variety of colors and the ability to select a gloss or matte sheen provide a natural looking aesthetic to a building's interior or exterior.





StoColor Wood Stain Collection

StoColor Wood Stain is an acrylic-based stain for use as a topcoat over StoCast Wood and StoSignature® Wood. It provides superior UV protection for long lasting colors and is available in gloss or matte sheen. With 25 standard colors and the possibility for custom colors, designers will enjoy the creative freedom to follow their inspiration.

StoColor System

- Quick and easy to understand thanks to a clear, logical system construction
- Offers a harmonic, finely tailored selection of color for interior and exterior use
- Is ergonomic and perception oriented for all phases of color selection and implementation

Colección de tintes para madera StoColor

El tinte para madera StoColor es un tinte de base acrílica para para usar como capa final sobre Madera StoCast y Madera StoSignature®. Proporciona una protección UV superior para colores duraderos y está disponible en mate o brillo.

Con 25 colores estándar y la posibilidad de colores personalizados, los diseñadores disfrutarán de la libertad creativa para seguir su inspiración.

Sistema StoColor

- Rápido y fácil de entender gracias a una construcción del sistema clara y lógica
- Ofrece una selección de colores armónica y perfectamente adaptada para uso interior y exterior
- Es ergonómico y está orientado a la percepción en todas las fases de selección e implementación del color

Guide to symbols / Explicación de los símbolos

31437 ■ 73 *

Color no.

Color code/order no.

Numero del tono de color

Código color/numero de pedido

Light Reflectance Value

Value for the quantity of light reflected from the surface. Measured in percent 100 % = white, 0 % = black

Valor Reflejante de Luz

Valor, en por ciento, que mide la cantidad de luz reflejada por la superficie: 100% = Blanco, 0% = Negro

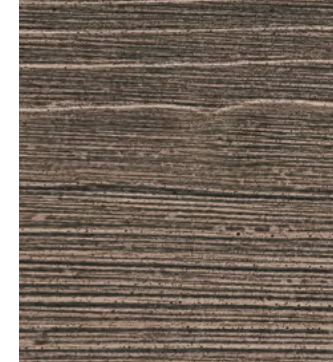
*Please note that certain dark and/or saturated colors may incur increased costs due to high tint charges.

*Tenga presente que ciertos colores oscuros y/o saturados pueden incurrir en mayores costos debido a los elevados costos de los colorantes.

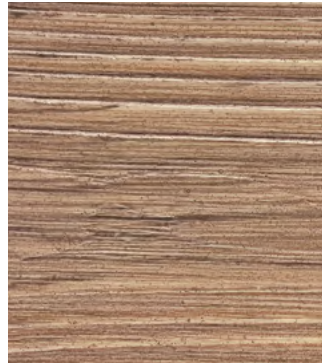
Most Popular Stains; Las manchas más populares



Alder VT192393



Ironwood VT192392



Weathered Walnut 38140 + VT192392



Rich Cedar VT192393 + CMP23061



Weathered Serengeti VT221695 + VT192389



Butternut VT192390

Please note

Please note that actual colors of manufactured products may vary slightly from this chart. Furthermore, samples may vary slightly in color and texture from production materials. It is always recommended to install a large sample wall area to assure desired results. All Sto products should be installed in accordance with Sto's specifications and instructions. Improper use of Sto products or use as part of an improperly designed or constructed larger assembly or building may result in serious damage to Sto products, and to the structure of the building or its components. **STO CORP. DISCLAIMS ALL WARRANTIES EXPRESSED OR IMPLIED EXCEPT AS STATED IN THE LIMITED WARRANTIES ISSUED FOR ITS PRODUCTS.**

Por Favor Nota

Tenga en cuenta que los colores reales de los productos fabricados pueden variar ligeramente a lo presentado en esta tabla. Además, las muestras pueden variar ligeramente en color y textura con respecto a los materiales de producción. Siempre se recomienda instalar un área de muestra grande en pared para asegurar los resultados deseados. Todos los productos Sto deben instalarse de acuerdo con las especificaciones e instrucciones de Sto. El uso inadecuado de los productos Sto, o su uso como parte de una obra diseñada o construida incorrectamente puede ocasionar daños graves a los productos Sto y a la estructura del edificio o sus componentes. **STO CORP. RENUNCIA A TODAS LAS GARANTÍAS EXPRESAS O IMPLÍCITAS, EXCEPTO A LO ESTABLECIDO EN LAS GARANTÍAS LIMITADAS EMITIDAS PARA SUS PRODUCTOS.**



Single Color Tone



Alder VT192393 LRV 23



Butternut VT192390 LRV 48



Dark Maple VT192295 LRV 10



Driftwood VT192389 LRV 26



Grey 38101 LRV 60



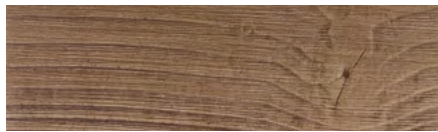
Hickory VT221617 LRV 19



Ironwood VT192392 LRV 23



Light Oak 38103 LRV 50



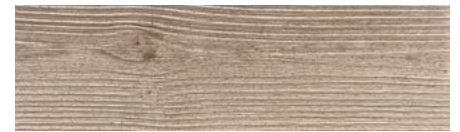
Mocha VT221618 LRV 19



Oak 38146 LRV 44



Red Barn CMP23061 LRV 18



Serengeti VT221695 LRV 37



Tidepool CMP23088 LRV 52



Umber VT192391 LRV 8



Walnut 38140 LRV 37

Two Color Tone*



Charred Grey* 38101 + VT192392 + 38101 LRV 59



Rich Cedar* VT192393 + CMP23061 LRV 24



Rustic Ironwood* VT192392 + 38140 LRV 30



Washed Walnut* 38140 + CMP23088 LRV 40



Weathered Alder* VT192393 + VT192392 LRV 25



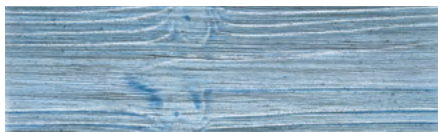
Weathered Driftwood* VT192392 + VT192389 LRV 25



Weathered Red Barn* CMP23061 + VT192389 LRV 14



Weathered Serengeti* VT221695 + VT192389 LRV 20



Weathered Tidepool* CMP23088 + VT192392 LRV 40



Weathered Walnut* 38140 + VT192392 LRV 27

* Colors achieved by applying two different standard colors (one coat each).

■ 00 LRV Light Reflective Value



A material shows emotion

With Sto, your creative exploration can take you anywhere. Our proven products give you unmatched freedom and the ability to achieve your vision in any color, any form, any texture, any material.

StoColor Wood Stain joins a wide range of color options provided by Sto. Designers are asking for design freedom, but with the assurance that the entire building envelope will perform. By offering these new wood stains, architects have one more alternative to choose from and can achieve a multitude of looks while enjoying the continuity and compatibility of the wall cladding throughout the entire building, no matter the aesthetic chosen.

To learn more about StoCast Wood for your next project, contact us by calling 1-800-221-2397 or visit us at <https://www.stocorp.com/stocast-wood/>

Creativity Begins. **Sto Finishes.**®



Sto Americas

Sto Corp.

3800 Camp Creek Pkwy
Building 1400, Suite 120
Atlanta, GA 30331
USA

Phone 1-800-221-2397
www.stocorp.com

ATTENTION

Sto products are intended for use by qualified professional contractors, not consumers, as a component of a larger construction assembly as specified by a qualified design professional, general contractor or builder. They should be installed in accordance with those specifications and Sto's instructions. Sto Corp. disclaims all, and assumes no, liability for on-site inspections, for its products applied improperly, or by unqualified persons or entities, or as part of an improperly designed or constructed building, for the nonperformance of adjacent building components or assemblies, or for other construction activities beyond Sto's control. Improper use of Sto products or use as part of an improperly designed or constructed larger assembly or building may result in serious damage to this product, and to the structure of the building or its components. **STO CORP. DISCLAIMS ALL WARRANTIES EXPRESSED OR IMPLIED EXCEPT FOR EXPLICIT LIMITED WRITTEN WARRANTIES ISSUED TO AND ACCEPTED BY BUILDING OWNERS IN ACCORDANCE WITH STO'S WARRANTY PROGRAMS WHICH ARE SUBJECT TO CHANGE FROM TIME TO TIME.** For the fullest, most current information on proper application, clean-up, mixing and other specifications and warranties, cautions and disclaimers, please refer to the Sto Corp. website, www.stocorp.com.