

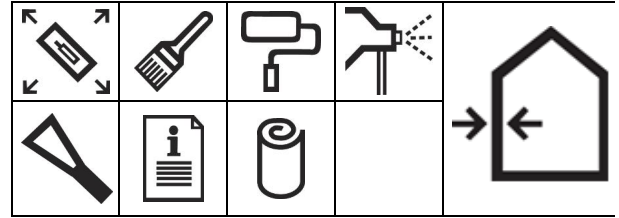
## PRODUCT BULLETIN

# StoGuard® RediCorner®

Product Number(s):

80209 StoGuard RediCorner IC (Inside Corner)

81951 StoGuard RediCorner OC (Outside Corner)



## PRODUCT DESCRIPTION

StoGuard RediCorners are pre-cut and pre-creased non-woven cloth reinforcement for use with StoGuard coatings as part of a complete StoGuard Air and Water-resistive Barrier System. StoGuard RediCorner IC is used on the inside corners of rough openings. StoGuard RediCorner OC is used on the outside corners of pre-fabricated panels or build-outs in field-applied wall construction.

FEATURES	BENEFITS
Pre-cut & Pre-creased	Installs fast
	Facilitates installation at complex 3D corners
Installs with brush or roller	Does not require highly skilled labor

### Packaging:

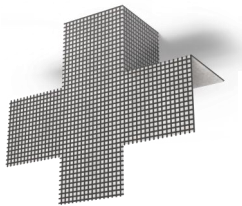
StoGuard RediCorner IC: 60 pieces per box

StoGuard RediCorner OC: 60 pieces per box

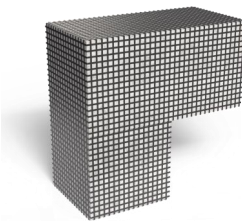
**Color:** Gray

**Shelf Life:** 3 years when properly stored in original unopened packaging.

**Storage:** Store off the ground in a dry area. Protect from direct sunlight.



StoGuard RediCorner IC: pre-creased for use at sill or head of openings



StoGuard RediCorner OC: pre-creased for use at outside corners of prefabricated panels

## SURFACE PREPARATION

Sto Proprietary Wall Systems: StoTherm® ci, StoVentec®, StoPowerwall®, StoQuik® Silver, StoPanel®, and StoLite® systems. Refer to applicable Sto Specification.

Surfaces must be fully cured, structurally sound, clean, dry, and free of frost, damage, and all bond-inhibiting materials, including dirt, dust, efflorescence, form oil and other foreign matter. Sheathing must be Exterior Grade or Exposure 1 wood-based sheathing, ASTM C1177 compliant glass mat gypsum sheathing, or ASTM C1325 Type A cementitious sheathing. Sheathing must be installed in compliance with the building code and manufacturer's recommendations. Treat sheathing joints, inside and outside corners, and transition details with StoGuard Fabric embedded in StoGuard coating. Use StoGuard RediCorner IC at inside corners of rough openings. Use StoGuard RediCorners OC at outside corners or pre-fabricated panels and build-outs in field applied wall construction. Refer to Sto Details. Pre-treat defects such as knots in wood-based sheathing, vacant fastener holes, and minor static cracks (up to 1/16 inch [1.6 mm] wide) in concrete and CMU with Sto Gold Fill® or Sto RapidGuard®. If cracks are structural consult an engineer.

## APPLICATION

Refer to StoGuard Air and Water-resistive Barrier Detail Booklets at [www.stocorp.com](http://www.stocorp.com) for illustrations of installation.

Product	Use or Application
4-in StoGuard Fabric	sheathing joints and seams
6-in StoGuard Fabric	2x4 rough opening protection
9-in StoGuard Fabric	2x6 rough opening protection
StoGuard RediCorner IC	Inside corners of rough openings at sill and head
StoGuard RediCorner OC	Outside corners of pre-fabricated panels or build-outs

Apply between 40° and 100°F (4° and 38°C) during application and drying period. Apply only to fully cured, structurally sound, clean, dry, properly prepared, frost-free surfaces.

## PRODUCT BULLETIN

# StoGuard® RediCorner®

Product Number(s):

80209 StoGuard RediCorner IC

81951 StoGuard RediCorner OC

## APPLICATION (CONTINUED)

**StoGuard RediCorner IC and StoGuard Fabric for Rough Opening Protection:** apply the StoGuard coating liberally (15 wet mils) at the rough opening inside corner. Immediately place StoGuard RediCorner IC in the wet coating with the tabs oriented so they are on the face of the sheathing. Embed StoGuard RediCorner IC in the coating by brushing or rolling. Apply additional coating to completely embed and seal the fabric. Repeat until all corners have been treated. After all corners have been installed, apply a liberal coat of the StoGuard coating to the sill of the rough opening. Immediately embed StoGuard Fabric into the coating by placing it in the wet coating and embedding and smoothing the fabric with a roller so no wrinkles exist. Overlap StoGuard RediCorner IC by at least 2-in (51mm) with StoGuard Fabric embedded in wet coating. Repeat at jambs and head. Once the entire rough opening has been treated, inspect for voids and pinholes. If found, apply more coating until the voids/pinholes have been filled to achieve a VOID and PINHOLE FREE surface.

**StoGuard RediCorner OC for Outside Corners:** apply the StoGuard coating liberally (15 wet mils) at the outside corner. Immediately install StoGuard RediCorner OC by folding it in on itself so it forms a 3D corner and place it in the wet coating over the outside corner. Apply coating at the overlap in StoGuard RediCorner OC so the lapped portion of the fabric is embedded in wet coating. Apply more coating over the entire surface of StoGuard RediCorner OC to completely embed and seal the fabric. Repeat until all outside corners have been treated.

Join StoGuard Fabric with StoGuard RediCorner OC by embedding the fabric in wet coating and overlapping StoGuard RediCorner OC by at least 2-in (51mm). Inspect for voids and pinholes. If found, apply more coating until the voids/pinholes have been filled to achieve a VOID and PINHOLE FREE surface.

## LIMITATIONS

- Use in conjunction with the StoGuard Air and Water-Resistive Barrier coatings.
- Protect from rain and freezing until COMPLETELY dry.
- Apply only when the surface and ambient temperatures are above 40°F (4°C) and below 100°F (38°C) during application and drying period (except as permitted for colder temperatures with Sto Gold Coat-refer to Product Bulletin).
- Not recommended for use when cool, damp conditions exist for prolonged periods. Cool, damp conditions retard drying and may require extended periods of protection.
- Do not use below grade or on surfaces subject to in-service water immersion.
- Fire-retardant treated or pressure treated plywood substrates must be dry and free of all bond-inhibiting materials.
- Not recommended for spanning sheathing joints or holes in excess of 1/8" (3mm) wide.
- Ventilate temporary heaters to the exterior to prevent water vapor from accumulating on or within the wall assembly materials.

When StoGuard Air and Water-resistive Barrier coatings are used in conjunction with StoTherm ci Systems, ensure the surface is clean, dry, and free of surface contamination. Do not expose the coating to weather for more than the allowable period printed under LIMITATIONS in the applicable Product Bulletin.

## LIMITED WARRANTY

This product is subject to a written limited warranty which can be obtained free of charge from Sto Corp.

## HEALTH AND SAFETY

**Warning:** KEEP OUT OF THE REACH OF CHILDREN. NOT FOR INTERNAL CONSUMPTION. FOR INDUSTRIAL USE ONLY

**Disposal:** dispose in accordance with local, state, or federal regulations

Consult the Safety Data Sheet (SDS) for further health and safety information, available at [www.stocorp.com](http://www.stocorp.com)

## PRODUCT BULLETIN

# StoGuard® RediCorner®

Product Number(s):

80209 StoGuard RediCorner IC

81951 StoGuard RediCorner OC

TECHNICAL DATA <sup>1</sup>			
REPORT	TEST METHOD	TEST CRITERIA	TEST RESULT*
Accelerated Weathering/ Hydrostatic Pressure <sup>1</sup>	ASTM E2570/ AATCC 127 (modified)	No cracking of the coating or bond failure, no water penetration after cyclic weathering & 5 hour water column (21.5 in [55 cm])	Pass
Structural, Racking, Restrained Environmental Conditioning, and Resistance to Water Penetration <sup>1</sup>	ASTM E2570/ E1233/ E72/E331 (par 6.6.3)	No cracking in the field of the panel, at substrate joints, and at the interface with flashing, no water penetration	Pass, no water penetration after sequence of 15 minute water sprays at 2.86, 6.24, 12.0, and 15.0 psf (137, 299, 574, and 718 Pa)
Fire Performance of Assembly <sup>1</sup>	NFPA 285	Comply with acceptance criteria	Complies (see below)
Building Code Compliance	<ul style="list-style-type: none"><li>Meets requirements for use on noncombustible construction as a component of:<ul style="list-style-type: none"><li>StoTherm® ci, StoPowerwall ci®, StoQuik® Silver, StoPanel®, and StoLite®. Refer to ICC-ESRs 1748, 4500, and 1233</li><li>StoVentec® Ventilated Rainscreen wall systems. Refer to Intertek Design Listings Sto/CWP 30-01, Sto/CWP 30-02, and Intertek CCRR-0454</li><li>Code compliant concrete, concrete masonry, portland cement stucco and other wall assemblies. Refer to ICC-ESR 1233</li></ul></li></ul>		
*Results are based on lab testing under controlled conditions. Results can vary between labs or from field tests.			
1. Test specimens made with StoGuard Fabric embedded in StoGuard air and water-resistive barrier coating at sheathing joints and seams			

<b>Sto Corp.</b> 3800 Camp Creek Parkway Building 1400, Suite 120 Atlanta, GA 30331 Tel: 404-346-3666 Toll Free: 1-800-221- 2397 Fax: 404 346-3119 <a href="http://www.stocorp.com">www.stocorp.com</a>	Revision Number: 000 Date: 9/2025	<p align="center"><b>ATTENTION</b></p> <p>This product is intended for use by qualified professional contractors, not consumers, as a component of a larger construction assembly as specified by a qualified design professional, general contractor or builder. It should be installed in accordance with those specifications and Sto's instructions. Sto Corp. disclaims all, and assumes no, liability for on-site inspections, for its products applied improperly, or by unqualified persons or entities, or as part of an improperly designed or constructed building, for the nonperformance of adjacent building components or assemblies, or for other construction activities beyond Sto's control. Improper use of this product or use as part of an improperly designed or constructed larger assembly or building may result in serious damage to this product, and to the structure of the building or its components. <b><u>STO CORP. DISCLAIMS ALL WARRANTIES EXPRESSED OR IMPLIED EXCEPT FOR EXPLICIT LIMITED WRITTEN WARRANTIES ISSUED TO AND ACCEPTED BY BUILDING OWNERS IN ACCORDANCE WITH STO'S WARRANTY PROGRAMS WHICH ARE SUBJECT TO CHANGE FROM TIME TO TIME.</u></b> For the fullest, most current information on proper application, clean-up, mixing and other specifications and warranties, cautions and disclaimers, please refer to the Sto Corp. website, <a href="http://www.stocorp.com">www.stocorp.com</a></p>
---	--------------------------------------	--