



Building with conscience.

# StoPowerwall® ci with Fireblocking

## Compliance with 2022 NYC Building Code (NYC BC)

Design Guide and Detail Booklet  
Series 63s.xx FB | August 2024

Facades



Exterior Wall  
Insulation and Finish  
Systems

The 2022 NYC Building Code (NYC BC) includes new fireblocking requirements applicable to exterior wall coverings, specifically those that contain combustible materials. This publication describes the use of fireblocking in StoPowerwall® ci wall assembly for compliance with the NYC BC.





# Design Guide



## Table of Contents

Summary .....	3
NFPA 285, Construction Documents & Deviations .....	3
Assembly Components Tested per NFPA 285 .....	4
Footnotes .....	4
StoGuard Product Use Chart .....	5
Guide Details .....	6



**NYC**<sup>®</sup>  
Buildings  
[www.nyc.gov/buildings](http://www.nyc.gov/buildings)

### ATTENTION

The final design of any project is the sole responsibility of the Design Professional, with considerations for compliance with local building and design codes and requirements. Sto Corp. accepts no liability for design, engineering, or workmanship of any project. The information provided herein is in addition to other technical data provided by Sto Corp. (System Bulletin, Specification, Guide Details, etc). For more information, please visit [www.stocorp.com](http://www.stocorp.com)

### Sto Corp.

3800 Camp Creek Pkwy. SW  
Bldg. 1400 • Suite 120  
Atlanta, GA 30331  
Tel: (800) 221-2397  
Fax: (404) 346-3119  
<http://www.stocorp.com>  
[helpdesk.stocorp.com](mailto:helpdesk.stocorp.com)



## Summary

In 2022, the New York City Department of Building (DOB) amended the NYC BC to include fireblocking requirements for exterior wall coverings composed of combustible materials. Section 718.2.6.1 of the code explains requirements and locations of fireblocking. The fireblocking requirement applies to new and retrofit construction of exterior wall assemblies with foam plastic insulation (Figure 1.0) Also included in this code update are exterior wall assemblies with wall coverings or claddings composed of other combustible materials, such as Metal Composite Materials (MCM), High-Pressure Laminates (HPL), Fiber-reinforced Plastic (FRP), and plastics complying with Chapter 26.

New York City authorities enacted these local changes because of the high density of high-rise structures in the city, and their position that current NFPA 285 testing does not address all of the fire performance concerns where foam plastic and other combustible materials are used in exterior wall assemblies. The new requirements are comprehensive and stringent, and will require additional building envelope design considerations using fireblocking within concealed spaces of exterior wall coverings, and as barriers between floors and occupancy groups (both horizontally and vertically). Non-combustible fireblocking must be installed within exterior wall assemblies that contain combustible components, even when such wall assembly has previously passed NFPA 285 testing<sup>1</sup>. These requirements apply to buildings of all types, with some exceptions discussed herein.

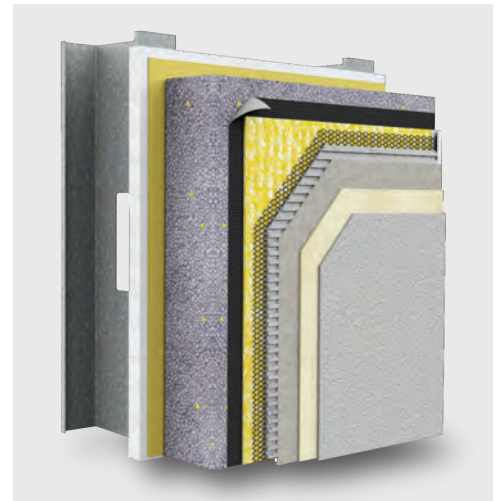
Sto Lamella (Figure 1.1) is a compliant, non-combustible mineral wool fireblocking product furnished by Sto Corp. When incorporated in StoPowerwall®ci, it provides a 2022 NYC BC code compliant wall covering over gypsum sheathing on steel frame wall construction, based on testing in accordance with NFPA 285.

This booklet is an overview of important changes, including specific details that demonstrate the construction of a compliant fireblocking method that is applicable to StoPowerwall®ci assemblies (Figure 1.2) that contain foam plastic insulation. Complete discussion of all aspects of fireblocking and fire testing requirements in the NYC Building Code is outside the scope of this document. Please refer to the NYC Building Code for additional information.

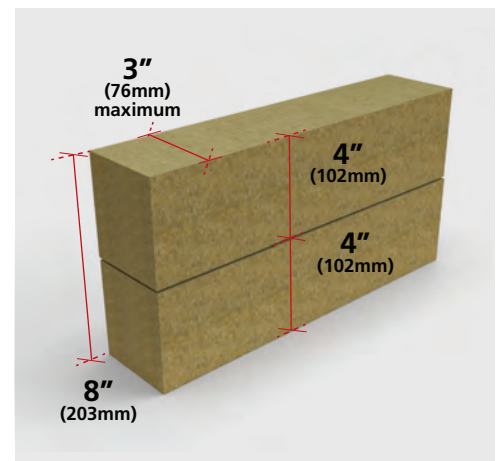
The 2022 NYC Building Code is viewable online at [www.upcodes.com](http://www.upcodes.com). Also see [NYC Buildings Bulletin Technical 2022-013](#), dated September 6, 2022, available at [www.nyc.gov/buildings](http://www.nyc.gov/buildings).

## NFPA 285, Construction Documents and Deviations

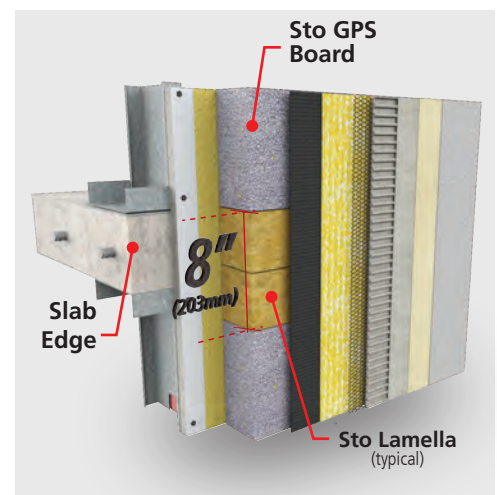
In addition to new fireblocking requirements, the updated NYC BC code now requires that the submitted construction applications include documentation of the NFPA 285 tested assembly from the manufacturer of the proposed exterior wall assembly<sup>2</sup>. "Any deviation which occurs during the course of installation will be evaluated and approved by the applicant of record or registered design professional. No deviation shall be approved that would result in an assembly that would otherwise fail to pass the acceptance criteria of NFPA 285 testing"<sup>3</sup>. To comply with the additional requirements set forth by the updated 2022 NYC BC, a special inspection process will verify compliance with reference to the approved construction documents during the construction process<sup>4</sup>. Refer to page 4 for a list of Sto NFPA 285 tested assembly components.



**Figure 1.0**  
Typical StoPowerwall®ci system shown with Sto GPS Board.



**Figure 1.1**  
Typical Sto Lamella used for fireblocking at a maximum of 3" (76mm) thickness to satisfy ci R-value requirements.



**Figure 1.2**  
Typical fireblocking assembly, using Sto Lamella, shown in StoPowerwall®ci with Sto GPS Board.



## StoPowerwall®ci Assembly Components Tested per NFPA 285

- Air & Water-Resistive Barrier: **Sto Gold Coat®** with StoGuard Fabric at joints, seams, and rough opening protection
- Insulation Board: **Sto GPS Board**
- Fireblocking: **Sto Lamella**
- Water Resistive Barrier: **No.15 Asphalt Felt**
- Drainage Mat: **StoDrainscreen®**
- Stucco: **StoPowerwall®** or Sto listed ASTM C 926 compliant stucco
- Primer: **StoPrime® Sand (optional)**
- Finish: **Stolit®**

## Footnotes

Refer to Sto product bulletins, guide specifications and guide details, technical hotlines, ICC Evaluation Reports, and other sources of information available at [www.stocorp.com](http://www.stocorp.com) for more details on specific Sto products, features, benefits, and limitations that apply to StoPowerwall® ci wall system and components.

1. NYC Buildings 2022-13 Bulletin Technical dated September 6, 2022, p. 1.
2. NYC Buildings 2022-13 Bulletin Technical dated September 6, 2022, p. 3.
3. NYC Buildings 2022-13 Bulletin Technical dated September 6, 2022, p. 3.
4. NYC BC 2022, Section 1705.16, p. 17-20 – 17-21.
5. NYC Buildings 2022-13 Bulletin Technical dated September 6, 2022, p. 3.



**Table 1.0 - StoGuard® Air & Water-Resistive Barrier Product Applications**

Sto Corp. offers multiple air and water-resistive barriers and detail components for use in its StoPowerwall®ci System as noted in Table 1.0. Deviations may be evaluated and approved by the applicant or a registered design professional based on their own professional judgment or education, or the recommendations of a subject matter expert<sup>5</sup>. The StoGuard® NFPA 285 tested assembly components are: Air & Water-Resistive Barrier: Sto Gold Coat®\*\* with StoGuard Fabric\*\* at joints, seams, and rough opening protection.

StoGuard® Detail Component	Sheathing Joints and Corners	Flashing and Rough Opening Protection	Penetrations	Static Joints and Seams	Dynamic Joints
Sto RapidGuard®	✓	✓	✓	✓	
StoGuard® Conformable Membrane	✓	✓	✓	✓	✓
StoGuard® Fluid Applied Air & Water-Resistive Barrier* with StoGuard® Fabric**	✓	✓	✓		
StoGuard® Transition Membrane embedded with any StoGuard® Fluid Applied Air & Water-Resistive Barrier				✓	✓
Sto Gold Fill with StoGuard® Mesh (or Sto Detail Mesh embedded)	✓	✓	✓		
Sto Gold Coat® TA with StoGuard® Mesh	✓	✓	✓		

\* StoGuard® Fluid Applied Air & Water-Resistive Barriers: Sto AirSeal®, Sto Gold Coat®, Sto Gold Coat®TA, StoGuard®VaporSeal®

\*\* Tested in accordance with NFPA 285 as a component of StoPowerwall®ci with Fireblocking.

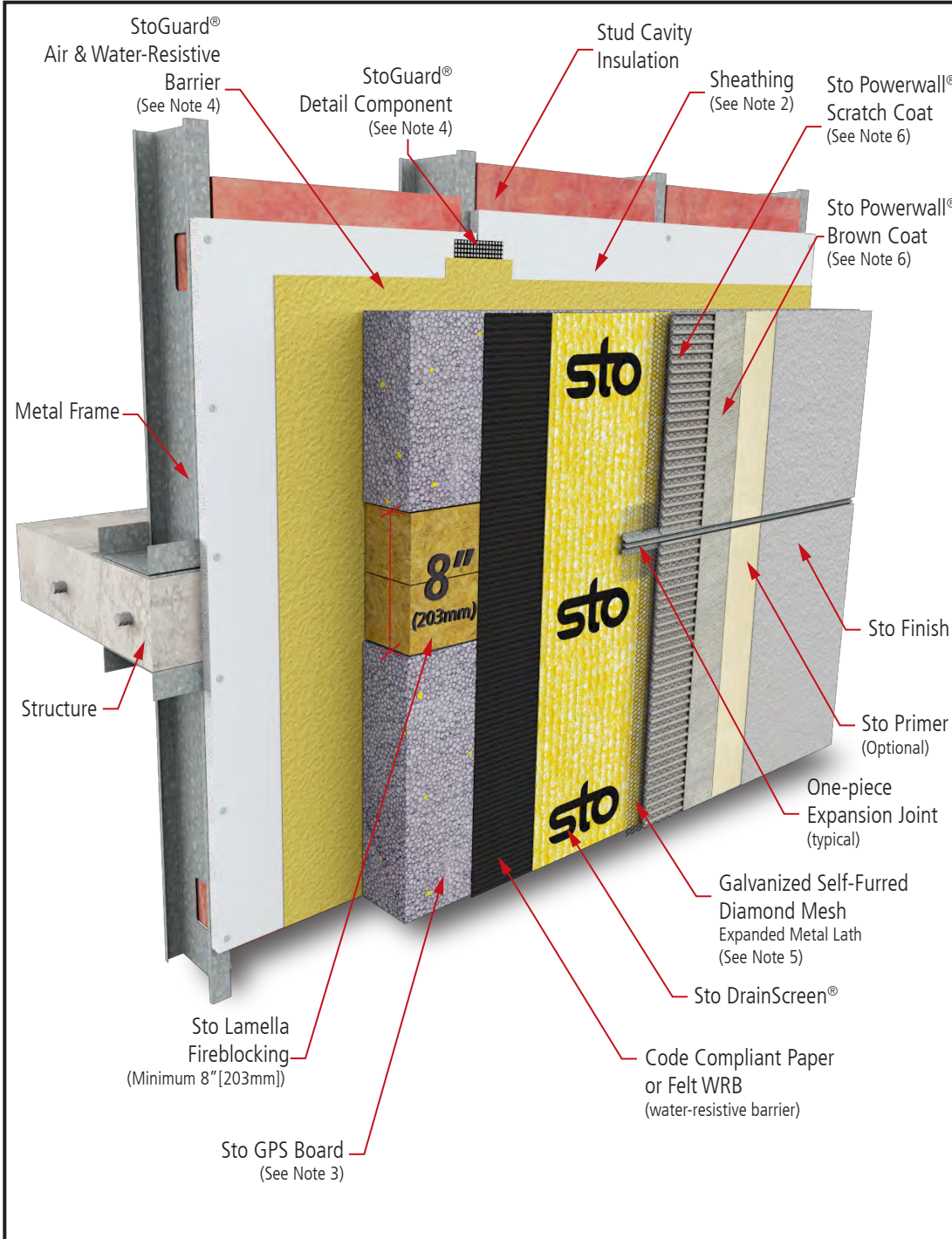


# Guide Details

Floorline Bypass .....	63s.01 FB
Floorline with Deflection Joint and Drainage .....	63s.02 FB
Separation of Different Occupancy Groups .....	63s.03 FB
Commercial Window - Sill and Jamb .....	63s.04 FB
Commercial Window - Head .....	63s.05 FB

# StoPowerwall®ci with Fireblocking Floorline Bypass

Detail No.: 63s.01 FB  
Date: August 2024



**Notes:**

1. Refer to New York City Building Code (NYC BC), Section 718.2.6, for complete specific information and design guidance on fireblocking requirements.
2. Glass mat gypsum sheathing in compliance with ASTM C1177.
3. Sto GPS Board: maximum 3" (76mm) thick.
4. Refer to StoGuard® Detail Component Applications (Table 1.0) for joint treatment, rough opening protection, backing for masonry anchors, or joint transitions to dissimilar materials and dynamic joints and seams in construction.
5. Minimum 2.5 lb/yd<sup>2</sup> (1.4 kg/m<sup>2</sup>) self-furred galvanized diamond mesh metal lath.
6. Stucco scratch and brown coat material in compliance with ASTM C926 and manufactured or listed by Sto Corp.
7. Components not identified as Sto are furnished by other manufacturers and are not necessarily installed by trades who install the Sto products. Refer to project specific contract documents.

**ATTENTION**

Property of Sto Corp. All Rights Reserved.

[www.stocorp.com](http://www.stocorp.com)

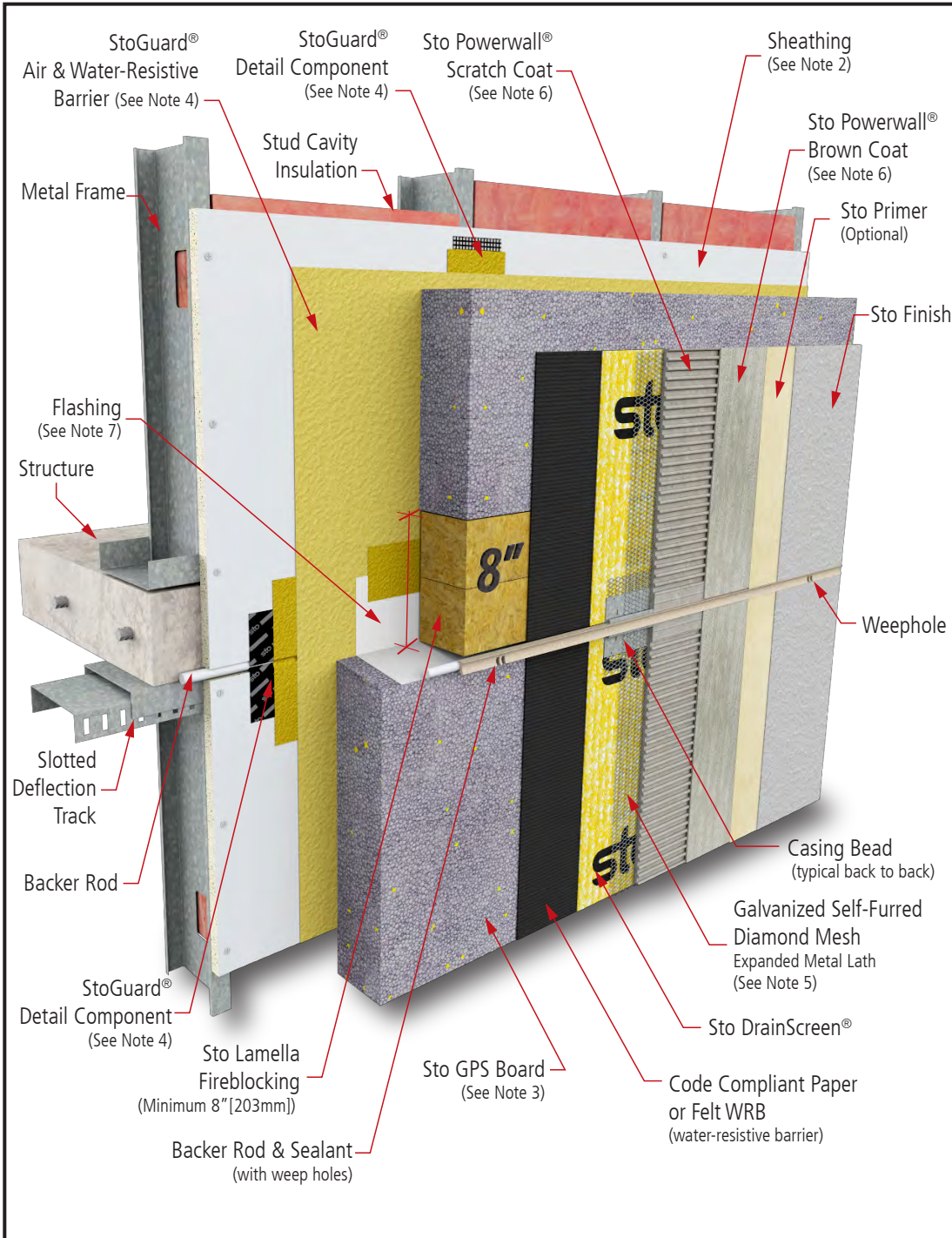
Sto products are intended for use by qualified professional contractors, not consumers, as a component of a larger construction assembly as specified by a qualified design professional, general contractor or builder. They should be installed in accordance with those specifications and Sto's instructions. Sto Corp. disclaims all, and assumes no, liability for on-site inspections, for its products applied improperly, or by unqualified persons or entities, or as part of an improperly designed or constructed building, for the nonperformance of adjacent building components or assemblies, or for other construction activities beyond Sto's control. Improper use of Sto products or use as part of an improperly designed or constructed larger assembly or building may result in serious damage to Sto products, and to the structure of the building or its components.

STO CORP. DISCLAIMS ALL WARRANTIES EXPRESSED OR IMPLIED EXCEPT FOR EXPLICIT LIMITED WRITTEN WARRANTIES ISSUED TO AND ACCEPTED BY BUILDING OWNERS IN ACCORDANCE WITH STO'S WARRANTY PROGRAMS WHICH ARE SUBJECT TO CHANGE FROM TIME TO TIME. For the fullest, most current information on proper application, clean-up, mixing and other specifications and warranties, cautions and disclaimers, please refer to the Sto Corp. website, [www.stocorp.com](http://www.stocorp.com).



# StoPowerwall®ci with Fireblocking Floorline with Deflection Joint and Drainage

Detail No.: 63s.02 FB  
Date: August 2024



## Notes:

1. Refer to New York City Building Code (NYC BC), Section 718.2.6, for complete specific information and design guidance on fireblocking requirements.
2. Glass mat gypsum sheathing in compliance with ASTM C1177.
3. Sto GPS Board: maximum 3" (76mm) thick.
4. Refer to StoGuard® Detail Component Applications (Table 1.0) for joint treatment, rough opening protection, backing for masonry anchors, or joint transitions to dissimilar materials and dynamic joints and seams in construction.
5. Minimum 2.5 lb/yd<sup>2</sup> (1.4 kg/m<sup>2</sup>) self-furred galvanized diamond mesh metal lath.
6. Stucco scratch and brown coat material in compliance with ASTM C926 and manufactured or listed by Sto Corp.
7. Flashing adhered to sloped Sto GPS Board surface with neutral cure silicone sealant.
8. Components not identified as Sto are furnished by other manufacturers and are not necessarily installed by trades who install the Sto products. Refer to project specific contract documents.

## ATTENTION

Property of Sto Corp. All Rights Reserved.

[www.stocorp.com](http://www.stocorp.com)

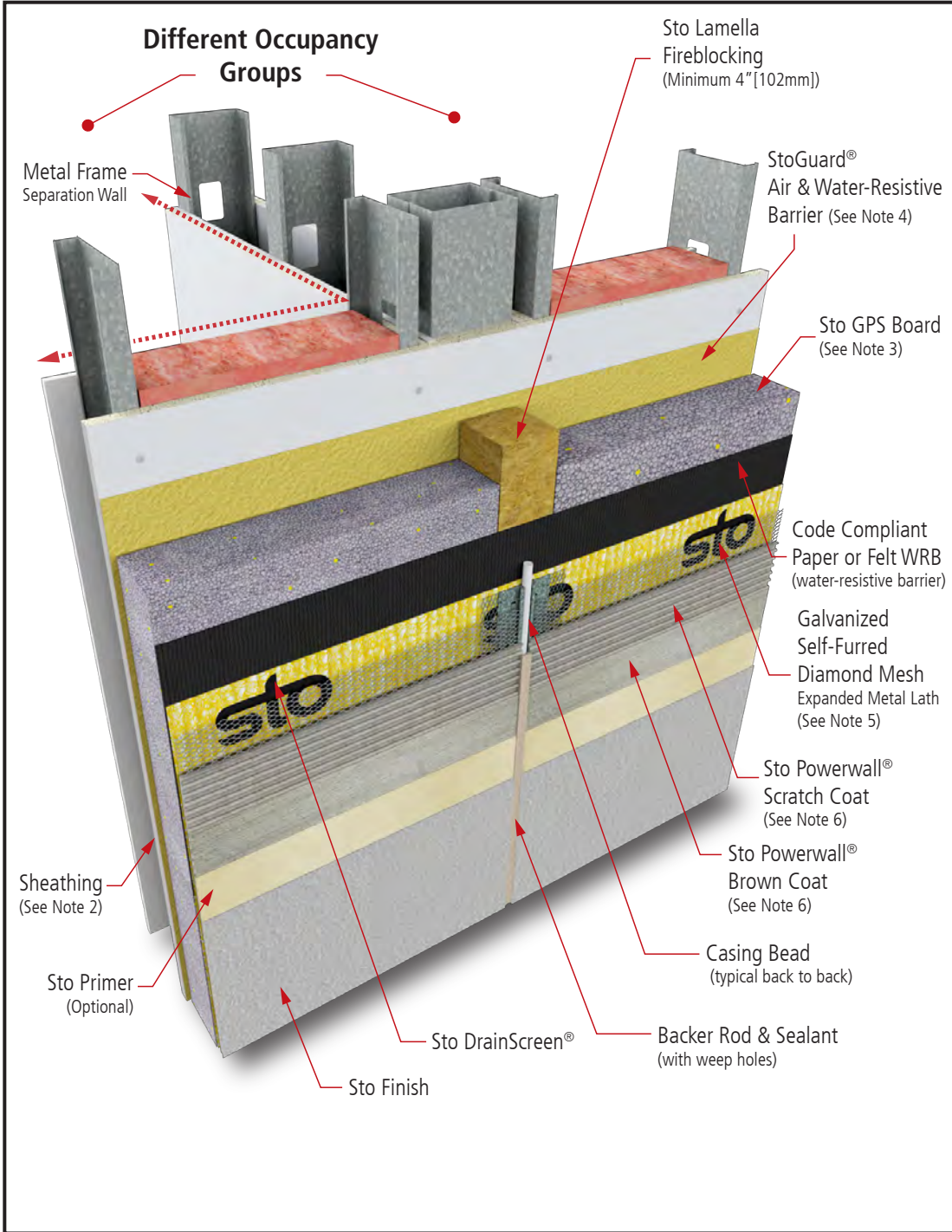
Sto products are intended for use by qualified professional contractors, not consumers, as a component of a larger construction assembly as specified by a qualified design professional, general contractor or builder. They should be installed in accordance with those specifications and Sto's instructions. Sto Corp. disclaims all, and assumes no, liability for on-site inspections, for its products applied improperly, or by unqualified persons or entities, or as part of an improperly designed or constructed building, for the nonperformance of adjacent building components or assemblies, or for other construction activities beyond Sto's control. Improper use of Sto products or use as part of an improperly designed or constructed larger assembly or building may result in serious damage to Sto products, and to the structure of the building or its components.

STO CORP. DISCLAIMS ALL WARRANTIES EXPRESSED OR IMPLIED EXCEPT FOR EXPLICIT LIMITED WRITTEN WARRANTIES ISSUED TO AND ACCEPTED BY BUILDING OWNERS IN ACCORDANCE WITH STO'S WARRANTY PROGRAMS WHICH ARE SUBJECT TO CHANGE FROM TIME TO TIME. For the fullest, most current information on proper application, clean-up, mixing and other specifications and warranties, cautions and disclaimers, please refer to the Sto Corp. website, [www.stocorp.com](http://www.stocorp.com).



# StoPowerwall®ci with Fireblocking Separation of Different Occupancy Groups

Detail No.: 63s.03 FB  
Date: August 2024



## Notes:

1. Refer to New York City Building Code (NYC BC), Section 718.2.6, for complete specific information and design guidance on fireblocking requirements.
2. Glass mat gypsum sheathing in compliance with ASTM C1177.
3. Sto GPS Board: maximum 3" (76mm) thick.
4. Refer to StoGuard® Detail Component Applications (Table 1.0) for joint treatment, rough opening protection, backing for masonry anchors, or joint transitions to dissimilar materials and dynamic joints and seams in construction.
5. Minimum 2.5 lb/yd<sup>2</sup> (1.4 kg/m<sup>2</sup>) self-furred galvanized diamond mesh metal lath.
6. Stucco scratch and brown coat material in compliance with ASTM C926 and manufactured or listed by Sto Corp.
7. Components not identified as Sto are furnished by other manufacturers and are not necessarily installed by trades who install the Sto products. Refer to project specific contract documents.

## ATTENTION

Property of Sto Corp. All Rights Reserved.

[www.stocorp.com](http://www.stocorp.com)

Sto products are intended for use by qualified professional contractors, not consumers, as a component of a larger construction assembly as specified by a qualified design professional, general contractor or builder. They should be installed in accordance with those specifications and Sto's instructions. Sto Corp. disclaims all, and assumes no, liability for on-site inspections, for its products applied improperly, or by unqualified persons or entities, or as part of an improperly designed or constructed building, for the nonperformance of adjacent building components or assemblies, or for other construction activities beyond Sto's control. Improper use of Sto products or use as part of an improperly designed or constructed larger assembly or building may result in serious damage to Sto products, and to the structure of the building or its components.

STO CORP. DISCLAIMS ALL WARRANTIES EXPRESSED OR IMPLIED EXCEPT FOR EXPLICIT LIMITED WRITTEN WARRANTIES ISSUED TO AND ACCEPTED BY BUILDING OWNERS IN ACCORDANCE WITH STO'S WARRANTY PROGRAMS WHICH ARE SUBJECT TO CHANGE FROM TIME TO TIME. For the fullest, most current information on proper application, clean-up, mixing and other specifications and warranties, cautions and disclaimers, please refer to the Sto Corp. website, [www.stocorp.com](http://www.stocorp.com).

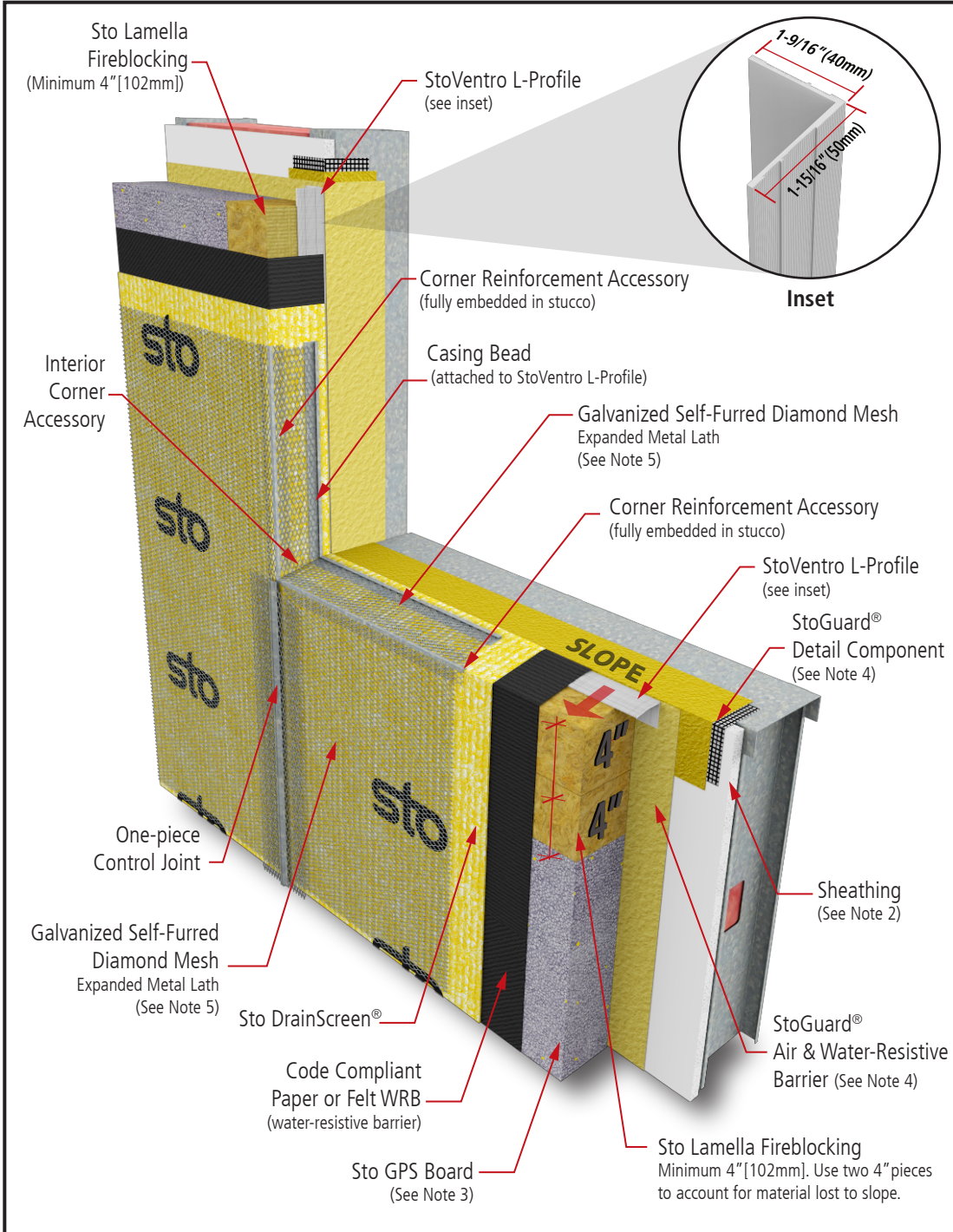


# StoPowerwall®ci with Fireblocking Commercial Window - Sill and Jamb

Detail No.: 63s.04 FB

Date: August 2024

Page 1 of 3



**Notes:**

1. Refer to New York City Building Code (NYC BC), Section 718.2.6, for complete specific information and design guidance on fireblocking requirements.
2. Glass mat gypsum sheathing in compliance with ASTM C1177.
3. Sto GPS Board: maximum 3" (76mm) thick.
4. Refer to StoGuard® Detail Component Applications (Table 1.0) for joint treatment, rough opening protection, backing for masonry anchors, or joint transitions to dissimilar materials and dynamic joints and seams in construction.
5. Minimum 2.5 lb/yd<sup>2</sup> (1.4 kg/m<sup>2</sup>) self-furred galvanized diamond mesh metal lath.
6. Stucco scratch and brown coat material in compliance with ASTM C926 and manufactured or listed by Sto Corp.
7. Components not identified as Sto are furnished by other manufacturers and are not necessarily installed by trades who install the Sto products. Refer to project specific contract documents.

**ATTENTION**

Property of Sto Corp. All Rights Reserved.

[www.stocorp.com](http://www.stocorp.com)

Sto products are intended for use by qualified professional contractors, not consumers, as a component of a larger construction assembly as specified by a qualified design professional, general contractor or builder. They should be installed in accordance with those specifications and Sto's instructions. Sto Corp. disclaims all, and assumes no, liability for on-site inspections, for its products applied improperly, or by unqualified persons or entities, or as part of an improperly designed or constructed building, for the nonperformance of adjacent building components or assemblies, or for other construction activities beyond Sto's control. Improper use of Sto products or use as part of an improperly designed or constructed larger assembly or building may result in serious damage to Sto products, and to the structure of the building or its components.

STO CORP. DISCLAIMS ALL WARRANTIES EXPRESSED OR IMPLIED EXCEPT FOR EXPLICIT LIMITED WRITTEN WARRANTIES ISSUED TO AND ACCEPTED BY BUILDING OWNERS IN ACCORDANCE WITH STO'S WARRANTY PROGRAMS WHICH ARE SUBJECT TO CHANGE FROM TIME TO TIME. For the fullest, most current information on proper application, clean-up, mixing and other specifications and warranties, cautions and disclaimers, please refer to the Sto Corp. website, [www.stocorp.com](http://www.stocorp.com).

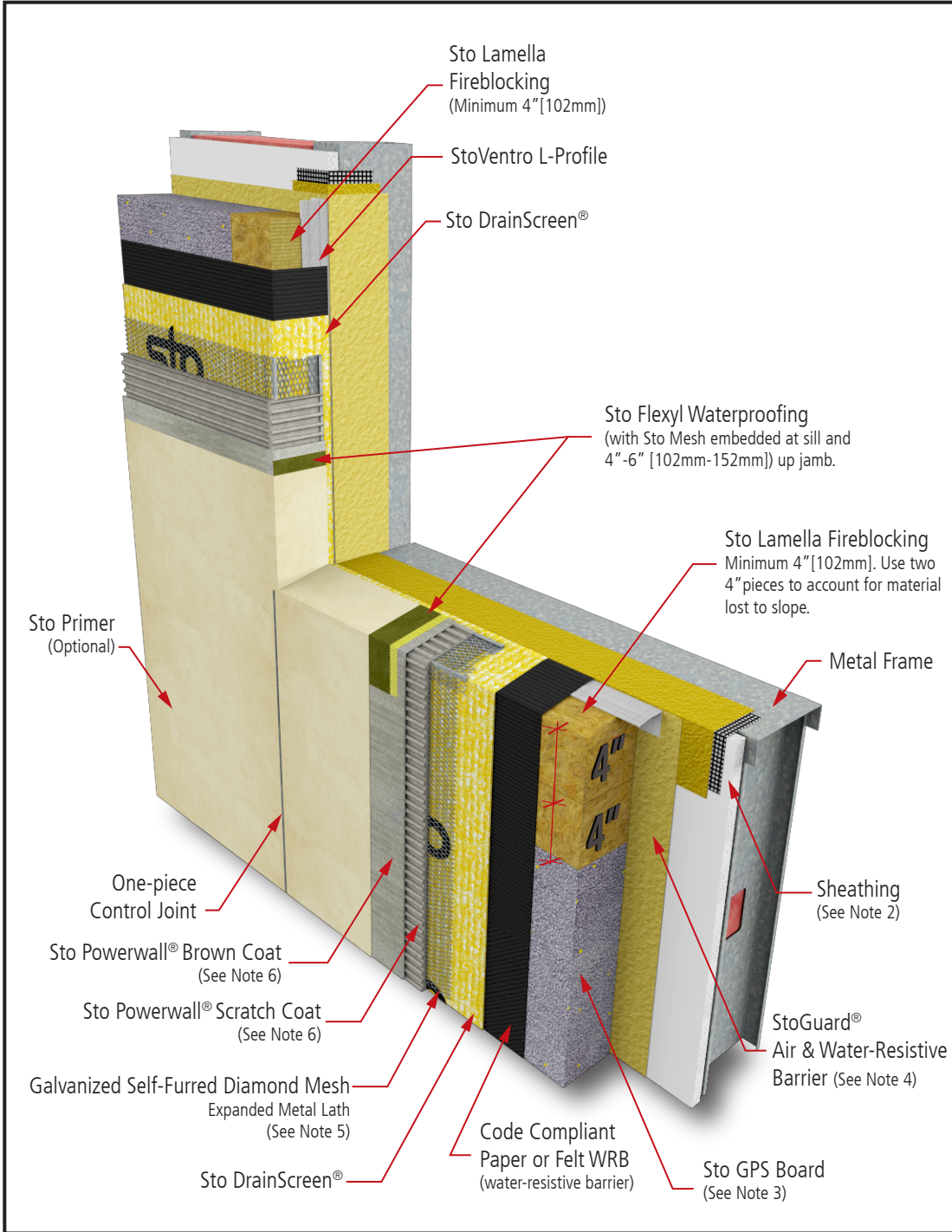


# StoPowerwall®ci with Fireblocking Commercial Window - Sill and Jamb

Detail No.: 63s.04 FB

Date: August 2024

Page 2 of 3



## Notes:

1. Refer to New York City Building Code (NYC BC), Section 718.2.6, for complete specific information and design guidance on fireblocking requirements.
2. Glass mat gypsum sheathing in compliance with ASTM C1177.
3. Sto GPS Board: maximum 3" (76mm) thick.
4. Refer to StoGuard® Detail Component Applications (Table 1.0) for joint treatment, rough opening protection, backing for masonry anchors, or joint transitions to dissimilar materials and dynamic joints and seams in construction.
5. Minimum 2.5 lb/yd<sup>2</sup> (1.4 kg/m<sup>2</sup>) self-furred galvanized diamond mesh metal lath.
6. Stucco scratch and brown coat material in compliance with ASTM C926 and manufactured or listed by Sto Corp.
7. Components not identified as Sto are furnished by other manufacturers and are not necessarily installed by trades who install the Sto products. Refer to project specific contract documents.

## ATTENTION

Property of Sto Corp. All Rights Reserved.

[www.stocorp.com](http://www.stocorp.com)

Sto products are intended for use by qualified professional contractors, not consumers, as a component of a larger construction assembly as specified by a qualified design professional, general contractor or builder. They should be installed in accordance with those specifications and Sto's instructions. Sto Corp. disclaims all, and assumes no, liability for on-site inspections, for its products applied improperly, or by unqualified persons or entities, or as part of an improperly designed or constructed building, for the nonperformance of adjacent building components or assemblies, or for other construction activities beyond Sto's control. Improper use of Sto products or use as part of an improperly designed or constructed larger assembly or building may result in serious damage to Sto products, and to the structure of the building or its components.

STO CORP. DISCLAIMS ALL WARRANTIES EXPRESSED OR IMPLIED EXCEPT FOR EXPLICIT LIMITED WRITTEN WARRANTIES ISSUED TO AND ACCEPTED BY BUILDING OWNERS IN ACCORDANCE WITH STO'S WARRANTY PROGRAMS WHICH ARE SUBJECT TO CHANGE FROM TIME TO TIME. For the fullest, most current information on proper application, clean-up, mixing and other specifications and warranties, cautions and disclaimers, please refer to the Sto Corp. website, [www.stocorp.com](http://www.stocorp.com).

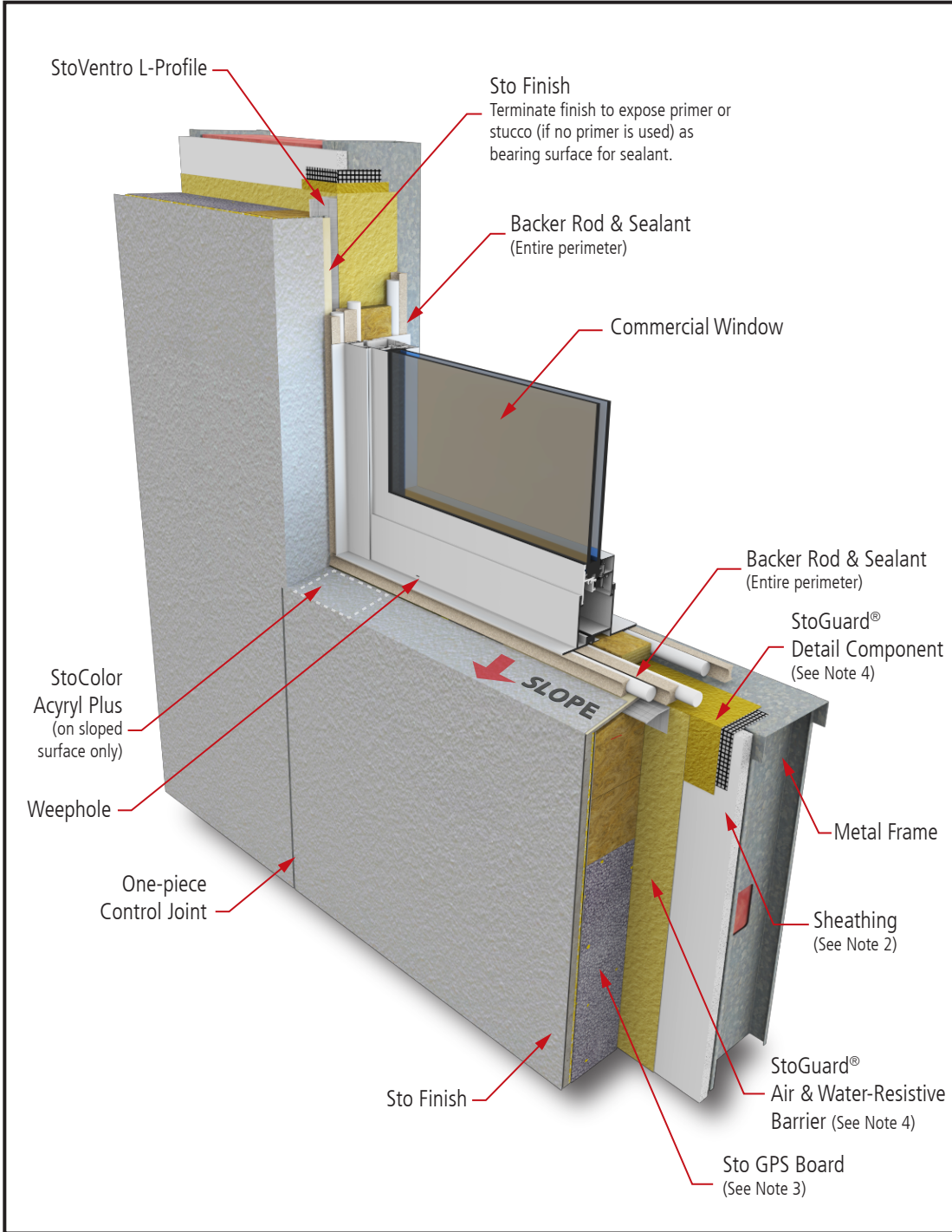


# StoPowerwall®ci with Fireblocking Commercial Window - Sill and Jamb

Detail No.: 63s.04 FB

Date: August 2024

Page 3 of 3



## Notes:

1. Refer to New York City Building Code (NYC BC), Section 718.2.6, for complete specific information and design guidance on fireblocking requirements.
2. Glass mat gypsum sheathing in compliance with ASTM C1177.
3. Sto GPS Board: maximum 3" (76mm) thick.
4. Refer to StoGuard® Detail Component Applications (Table 1.0) for joint treatment, rough opening protection, backing for masonry anchors, or joint transitions to dissimilar materials and dynamic joints and seams in construction.
5. Minimum 2.5 lb/yd<sup>2</sup> (1.4 kg/m<sup>2</sup>) self-furred galvanized diamond mesh metal lath.
6. Stucco scratch and brown coat material in compliance with ASTM C926 and manufactured or listed by Sto Corp.
7. Components not identified as Sto are furnished by other manufacturers and are not necessarily installed by trades who install the Sto products. Refer to project specific contract documents.

## ATTENTION

Property of Sto Corp. All Rights Reserved.

[www.stocorp.com](http://www.stocorp.com)

Sto products are intended for use by qualified professional contractors, not consumers, as a component of a larger construction assembly as specified by a qualified design professional, general contractor or builder. They should be installed in accordance with those specifications and Sto's instructions. Sto Corp. disclaims all, and assumes no, liability for on-site inspections, for its products applied improperly, or by unqualified persons or entities, or as part of an improperly designed or constructed building, for the nonperformance of adjacent building components or assemblies, or for other construction activities beyond Sto's control. Improper use of Sto products or use as part of an improperly designed or constructed larger assembly or building may result in serious damage to Sto products, and to the structure of the building or its components.

STO CORP. DISCLAIMS ALL WARRANTIES EXPRESSED OR IMPLIED EXCEPT FOR EXPLICIT LIMITED WRITTEN WARRANTIES ISSUED TO AND ACCEPTED BY BUILDING OWNERS IN ACCORDANCE WITH STO'S WARRANTY PROGRAMS WHICH ARE SUBJECT TO CHANGE FROM TIME TO TIME. For the fullest, most current information on proper application, clean-up, mixing and other specifications and warranties, cautions and disclaimers, please refer to the Sto Corp. website, [www.stocorp.com](http://www.stocorp.com).

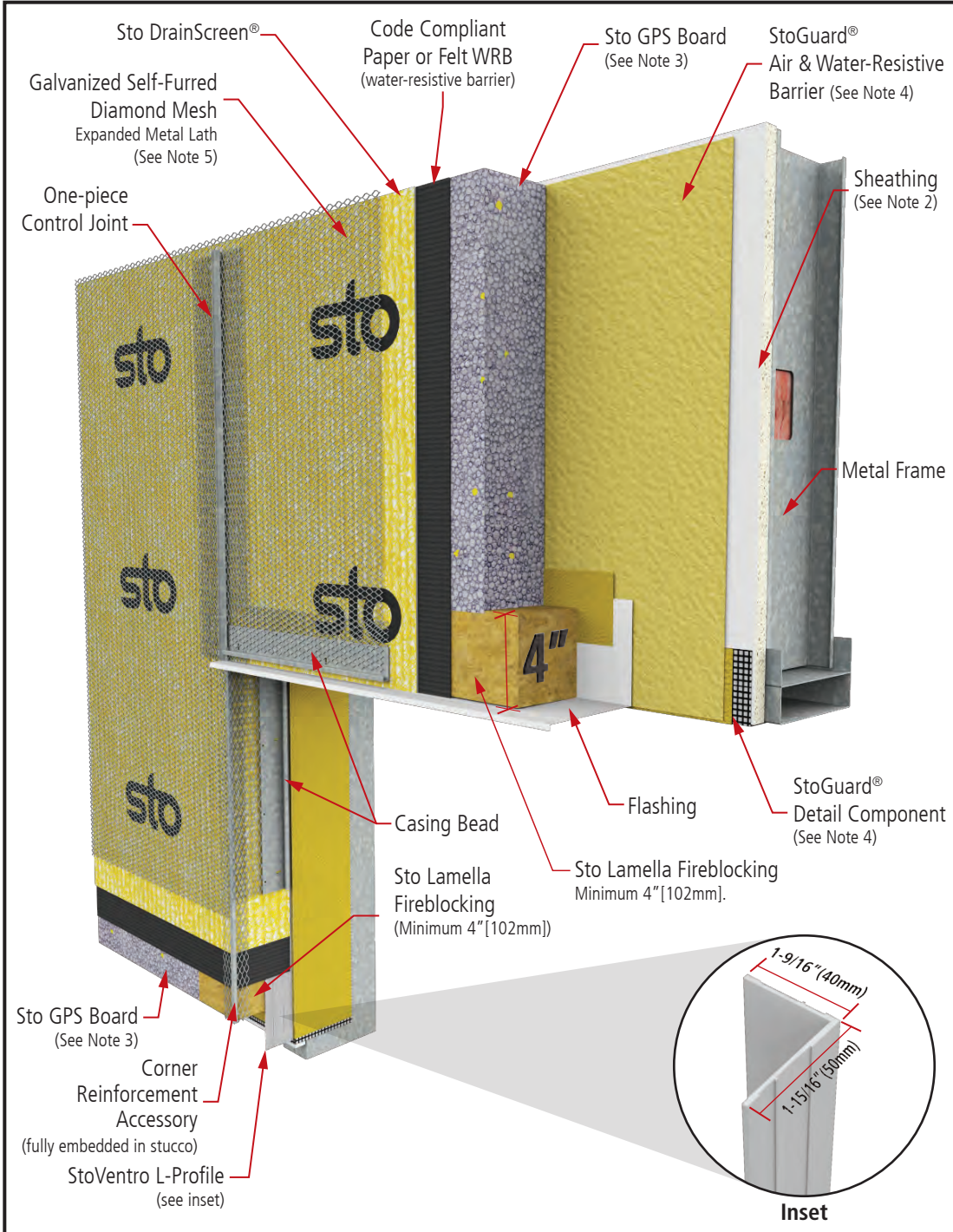


# StoPowerwall®ci with Fireblocking Commercial Window - Head

Detail No.: 63s.05 FB

Date: August 2024

Page 1 of 3



**Notes:**

1. Refer to New York City Building Code (NYC BC), Section 718.2.6, for complete specific information and design guidance on fireblocking requirements.
2. Glass mat gypsum sheathing in compliance with ASTM C1177.
3. Sto GPS Board: maximum 3" (76mm) thick.
4. Refer to StoGuard® Detail Component Applications (Table 1.0) for joint treatment, rough opening protection, backing for masonry anchors, or joint transitions to dissimilar materials and dynamic joints and seams in construction.
5. Minimum 2.5 lb/yd<sup>2</sup> (1.4 kg/m<sup>2</sup>) self-furred galvanized diamond mesh metal lath.
6. Stucco scratch and brown coat material in compliance with ASTM C926 and manufactured or listed by Sto Corp.
7. Components not identified as Sto are furnished by other manufacturers and are not necessarily installed by trades who install the Sto products. Refer to project specific contract documents.

**ATTENTION**

Sto products are intended for use by qualified professional contractors, not consumers, as a component of a larger construction assembly as specified by a qualified design professional, general contractor or builder. They should be installed in accordance with those specifications and Sto's instructions. Sto Corp. disclaims all, and assumes no, liability for on-site inspections, for its products applied improperly, or by unqualified persons or entities, or as part of an improperly designed or constructed building, for the nonperformance of adjacent building components or assemblies, or for other construction activities beyond Sto's control. Improper use of Sto products or use as part of an improperly designed or constructed larger assembly or building may result in serious damage to Sto products, and to the structure of the building or its components.

STO CORP. DISCLAIMS ALL WARRANTIES EXPRESSED OR IMPLIED EXCEPT FOR EXPLICIT LIMITED WRITTEN WARRANTIES ISSUED TO AND ACCEPTED BY BUILDING OWNERS IN ACCORDANCE WITH STO'S WARRANTY PROGRAMS WHICH ARE SUBJECT TO CHANGE FROM TIME TO TIME. For the fullest, most current information on proper application, clean-up, mixing and other specifications and warranties, cautions and disclaimers, please refer to the Sto Corp. website, [www.stocorp.com](http://www.stocorp.com).

Property of Sto Corp. All Rights Reserved.

[www.stocorp.com](http://www.stocorp.com)

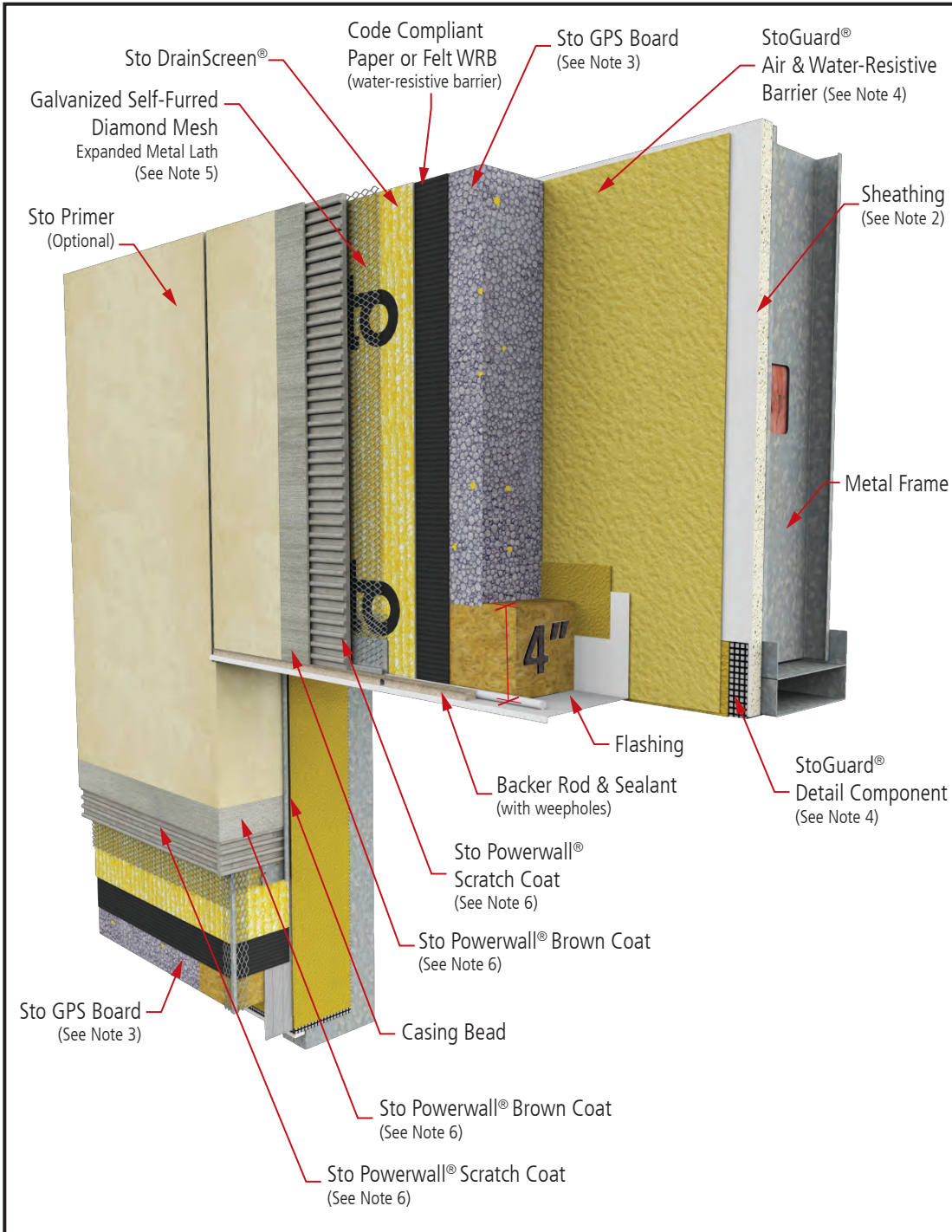


# StoPowerwall®ci with Fireblocking Commercial Window - Head

Detail No.: 63s.05 FB

Date: August 2024

Page 2 of 3



**Notes:**

1. Refer to New York City Building Code (NYC BC), Section 718.2.6, for complete specific information and design guidance on fireblocking requirements.
2. Glass mat gypsum sheathing in compliance with ASTM C1177.
3. Sto GPS Board: maximum 3"(76mm) thick.
4. Refer to StoGuard® Detail Component Applications (Table 1.0) for joint treatment, rough opening protection, backing for masonry anchors, or joint transitions to dissimilar materials and dynamic joints and seams in construction.
5. Minimum 2.5 lb/yd<sup>2</sup> (1.4 kg/m<sup>2</sup>) self-furred galvanized diamond mesh metal lath.
6. Stucco scratch and brown coat material in compliance with ASTM C926 and manufactured or listed by Sto Corp.
7. Components not identified as Sto are furnished by other manufacturers and are not necessarily installed by trades who install the Sto products. Refer to project specific contract documents.

**ATTENTION**

Property of Sto Corp. All Rights Reserved.

[www.stocorp.com](http://www.stocorp.com)

Sto products are intended for use by qualified professional contractors, not consumers, as a component of a larger construction assembly as specified by a qualified design professional, general contractor or builder. They should be installed in accordance with those specifications and Sto's instructions. Sto Corp. disclaims all, and assumes no, liability for on-site inspections, for its products applied improperly, or by unqualified persons or entities, or as part of an improperly designed or constructed building, for the nonperformance of adjacent building components or assemblies, or for other construction activities beyond Sto's control. Improper use of Sto products or use as part of an improperly designed or constructed larger assembly or building may result in serious damage to Sto products, and to the structure of the building or its components.

STO CORP. DISCLAIMS ALL WARRANTIES EXPRESSED OR IMPLIED EXCEPT FOR EXPLICIT LIMITED WRITTEN WARRANTIES ISSUED TO AND ACCEPTED BY BUILDING OWNERS IN ACCORDANCE WITH STO'S WARRANTY PROGRAMS WHICH ARE SUBJECT TO CHANGE FROM TIME TO TIME. For the fullest, most current information on proper application, clean-up, mixing and other specifications and warranties, cautions and disclaimers, please refer to the Sto Corp. website, [www.stocorp.com](http://www.stocorp.com).

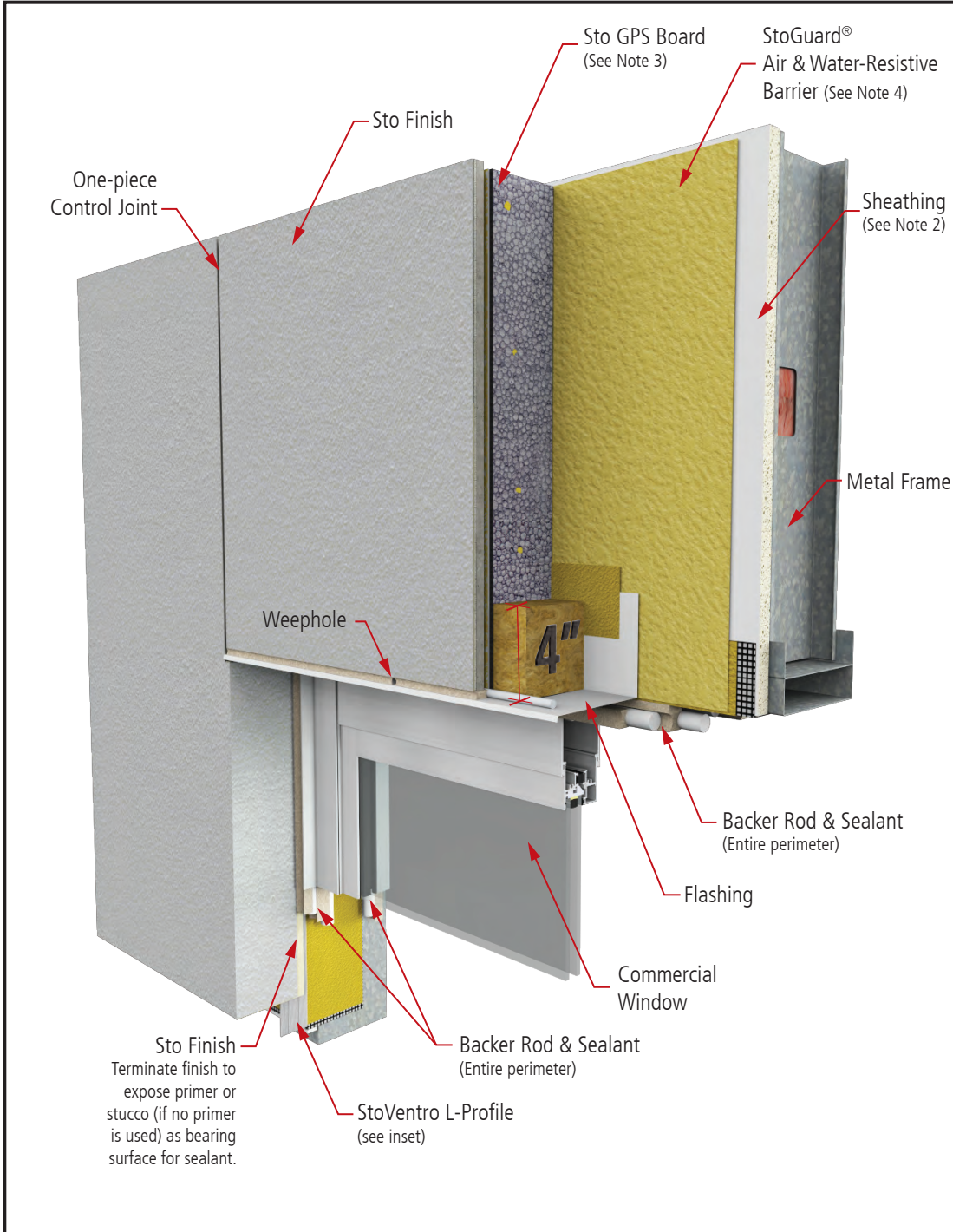


# StoPowerwall®ci with Fireblocking Commercial Window - Head

Detail No.: 63s.05 FB

Date: August 2024

Page 3 of 3



**Notes:**

1. Refer to New York City Building Code (NYC BC), Section 718.2.6, for complete specific information and design guidance on fireblocking requirements.
2. Glass mat gypsum sheathing in compliance with ASTM C1177.
3. Sto GPS Board: maximum 3"(76mm) thick.
4. Refer to StoGuard® Detail Component Applications (Table 1.0) for joint treatment, rough opening protection, backing for masonry anchors, or joint transitions to dissimilar materials and dynamic joints and seams in construction.
5. Minimum 2.5 lb/yd<sup>2</sup> (1.4 kg/m<sup>2</sup>) self-furred galvanized diamond mesh metal lath.
6. Stucco scratch and brown coat material in compliance with ASTM C926 and manufactured or listed by Sto Corp.
7. Components not identified as Sto are furnished by other manufacturers and are not necessarily installed by trades who install the Sto products. Refer to project specific contract documents.

**ATTENTION**

Property of Sto Corp. All Rights Reserved.

[www.stocorp.com](http://www.stocorp.com)

Sto products are intended for use by qualified professional contractors, not consumers, as a component of a larger construction assembly as specified by a qualified design professional, general contractor or builder. They should be installed in accordance with those specifications and Sto's instructions. Sto Corp. disclaims all, and assumes no, liability for on-site inspections, for its products applied improperly, or by unqualified persons or entities, or as part of an improperly designed or constructed building, for the nonperformance of adjacent building components or assemblies, or for other construction activities beyond Sto's control. Improper use of Sto products or use as part of an improperly designed or constructed larger assembly or building may result in serious damage to Sto products, and to the structure of the building or its components.

**STO CORP. DISCLAIMS ALL WARRANTIES EXPRESSED OR IMPLIED EXCEPT FOR EXPLICIT LIMITED WRITTEN WARRANTIES ISSUED TO AND ACCEPTED BY BUILDING OWNERS IN ACCORDANCE WITH STO'S WARRANTY PROGRAMS WHICH ARE SUBJECT TO CHANGE FROM TIME TO TIME.** For the fullest, most current information on proper application, clean-up, mixing and other specifications and warranties, cautions and disclaimers, please refer to the Sto Corp. website, [www.stocorp.com](http://www.stocorp.com).

