

StoGuard™ outperforms in time study.

Sto Corp. hired Jackson Productivity Research Inc. to objectively compare and evaluate the application times of StoGuard products and the leading spunbonded olefin sheet wrap. We constructed a 672 square foot building to represent typical commercial conditions. Application technicians installed each product according to its respective installation guidelines.

The results confirmed that installing StoGuard spray-on building

wrap is faster and easier compared to sheet wraps. This edge in application time can save contractors up to 70 percent in labor costs.

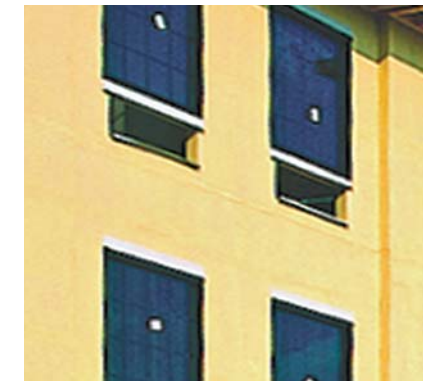
To calculate the StoGuard savings, use the comparison worksheet on the reverse side of this page or call us with specs on your next project. We'll help you with the bid process and prove the cost effectiveness of StoGuard.

For a detailed report of the StoGuard Time Study, please visit our website www.stocorp.com or contact Sto at 800-221-2397.

Contractors save on labor, owners save on energy.

Conventional sheet wrap products leave you hanging in the breeze and leaking. Use StoGuard™ for a superior waterproofing air barrier with seamless protection.

PRODUCT	APPLICATION STEPS***	TOTAL MAN-MINUTES**	MAN-MINUTES PER SQ/FT	TOTAL TIME
StoGuard™ 	Spray Sto EmeraldCoat	= 11.13	.017 minutes per sq ft	1.15 MAN-HOURS
	Joint Treatment	= 58.63	.104 minutes per sq ft	
Spunbonded Olefin Sheet Wrap 	Roll onto wall and tape seams	+ = 124.53	.185 minutes per sq ft	4.34 MAN-HOURS
	Screw in cap fasteners	+ = 136.14	.203 minutes per sq ft	



StoGuard™ high performance protection

StoGuard™ is a spray-on wrap for superior waterproofing and air barrier performance.

StoGuard is continuous, structural and durable. Because StoGuard is adhered to sheathing it becomes a part of overall physical structure. There is no tearing or gapping between StoGuard and the sheathing, only smooth uninterrupted coverage. This structural characteristic allows StoGuard to outperform sheet wraps.

Sheet building wraps, which are attached with nails or staples, may have gaps that allow air infiltration and leakage. They can also tear away from the fasteners or dislodge with wind gusts.

StoGuard™ is easier to install.

The StoGuard assembly of products is easier to install than sheet wraps and does not require highly skilled labor. StoGuard installs easily by paint, waterproofing or EIFS/stucco contractors without special training. Sto Gold Coat and Sto EmeraldCoat can be applied with an airless sprayer, roller or brush for the same smooth continuous protection. The gold or green product color makes application inconsistencies easy to identify.

Unlike some solvent-based materials, StoGuard has low VOCs and is non-toxic. No additional breathing apparatus or special handling is necessary.

StoGuard™ is energy efficient.

According to US Department of Energy statistics "up to 40% of the energy consumed to heat or cool a building is due to air leakage into and out of the building." Using StoGuard helps prevent air leakage and thus reduces energy costs.

A study of commercial buildings by the National Institute of Standards and Technology (NIST) confirmed that air barriers promote energy savings ranging from 30-40% for heating climates and 10-15% for cooling climates.

StoGuard is a superior air barrier, which helps with indoor air quality and energy savings.



Sheet wrap

*Testing conducted by Jackson Productivity Research Inc.
 **Application times for a 672 sqft wall.
 *** Does not include rough opening protection. Only includes field of wall. Time to protect rough opening was found to be comparable between StoGuard and Spunbonded Olefin sheet wrap.

StoGuard™ vs. Sheet Wraps Worksheet



Fill in the blanks on this worksheet to calculate the total installed cost of using StoGuard versus sheet wraps. This is an estimate only.

Part A

1. Wall Calculations Please fill in the wall area square footage and the hourly labor rate in order to estimate your total labor costs.

StoGuard™ High Performance Protection

Man-Minutes per Sq Ft	X	Total Project Sq Ft	÷	60 Minutes	X	Hourly Labor Rate	=	Total Labor Costs
.121*	X		÷	60	X	\$	=	\$ *

*Transfer to #3 below.

Sheet Wrap

Man-Minutes per Sq Ft	X	Total Project Sq Ft	÷	60 Minutes	X	Hourly Labor Rate	=	Total Labor Costs
.388*	X		÷	60	X	\$	=	\$ *

*Transfer to #3 below.

*Determined by an independent third-party study.

2. Material Calculations To obtain your estimated price per square foot, enter your price and coverage numbers. For price, please be sure to use a total price by including all products you will use to treat the wall.

StoGuard™ High Performance Protection

Price	÷	Coverage	=	Price per Sq Ft
\$	÷		=	\$

Sheet Wrap

Price	÷	Coverage	=	Price per Sq Ft
\$	÷		=	\$

Next, enter the number you calculated above (price/square feet) and the total square footage of the job.

StoGuard™ High Performance Protection

Price per Sq Ft	X	Total Project Sq Ft	=	Material Cost
\$	X		=	\$ *

*Transfer to #3 below.

Sheet Wrap

Price per Sq Ft	X	Total Project Sq Ft	=	Material Cost
\$	X		=	\$ *

*Transfer to #3 below.

Part B

3. Total Costs To determine the total installed cost, please enter the numbers highlighted.

StoGuard™ High Performance Protection

Total Labor Costs	+	Material Cost	=	Total Cost
\$	+	\$	=	\$ *

*Transfer to #4 below.

Sheet Wrap

Total Labor Costs	+	Material Cost	=	Total Cost
\$	+	\$	=	\$ *

*Transfer to #4 below.

4. Installed Cost Per Square Foot Finally, enter the total cost numbers from above and divide them by the total square feet.

StoGuard™ High Performance Protection

Total Costs	÷	Total Project Sq Ft	=	Installed Cost per Sq Ft
\$	÷		=	\$

Sheet Wrap

Total Costs	÷	Total Project Sq Ft	=	Installed Cost per Sq Ft
\$	÷		=	\$

Sto Corp.
3800 Camp Creek Parkway
Building 1400, Suite 120
Atlanta, GA 30331

Tel: 404-346-3666
Toll Free: 1-800-221-2397
Fax: 404-346-3119
www.stocorp.com

S788 02/08

ATTENTION

This product is intended for use by qualified professional contractors, not consumers, as a component of a larger construction assembly as specified by a qualified design professional, general contractor or builder. It should be installed in accordance with those specifications and Sto's instructions. Sto Corp. disclaims all, and assumes no, liability for on-site inspections, for its products applied improperly, or by unqualified persons or entities, or as part of an improperly designed or constructed building, for the nonperformance of adjacent building components or assemblies, or for other construction activities beyond Sto's control. Improper use of this product or use as part of an improperly designed or constructed larger assembly or building may result in serious damage to this product, and to the structure of the building or its components. **STO CORP. DISCLAIMS ALL WARRANTIES EXPRESSED OR IMPLIED EXCEPT FOR EXPLICIT LIMITED WRITTEN WARRANTIES ISSUED TO AND ACCEPTED BY BUILDING OWNERS IN ACCORDANCE WITH STO'S WARRANTY PROGRAMS WHICH ARE SUBJECT TO CHANGE FROM TIME TO TIME.** For the fullest, most current information on proper application, clean-up, mixing and other specifications and warranties, cautions and disclaimers, please refer to the Sto Corp. website, www.stocorp.com. This is an estimate only for comparison, not for pricing an actual job.