

# StoQuik® Silver NExT-Ventilated Cement Board Stucco

High impact, moisture resistant, drained, ventilated exterior wall finish system incorporating a superior waterproofing/air barrier, a cement board substrate, reinforced base coat and polymer based exterior finish.

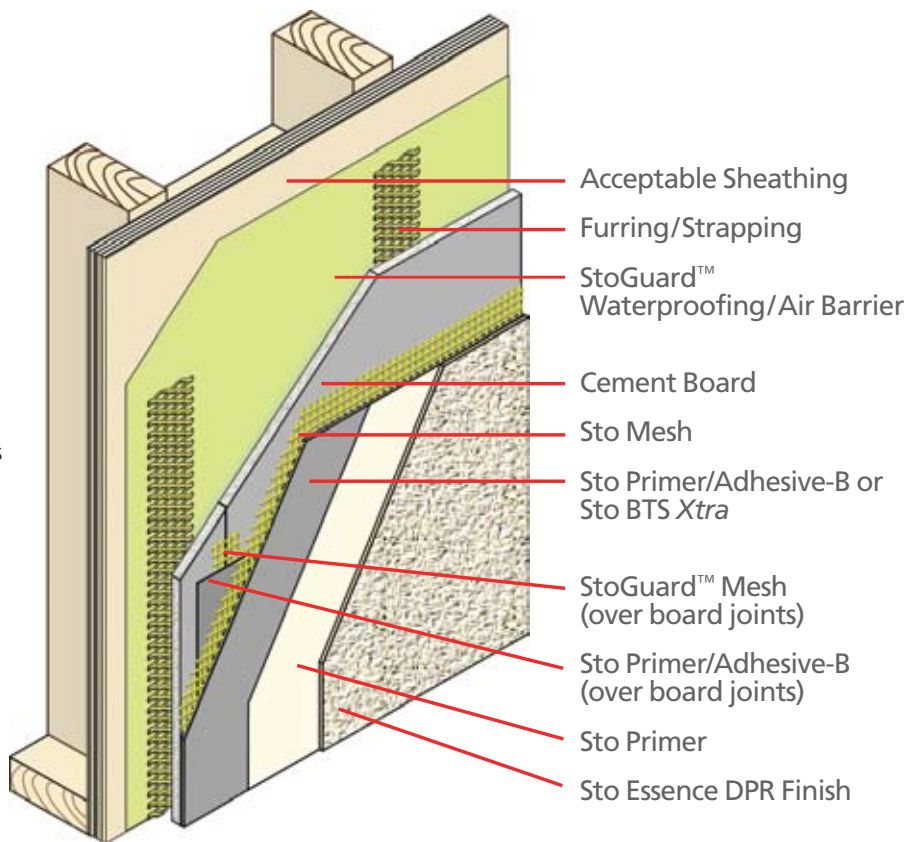
## Description

StoQuik Silver NExT Ventilated is a high impact, drained, ventilated exterior wall system that provides resistance to abuse and weather. StoGuard™ waterproofing/air barrier provides superior moisture protection. The assembly also meets structural racking and fire code requirements, when applied over the appropriate sheathings: Exterior or Exposure1 plywood, Exposure1 OSB, Dens-Glass® Gold or water-resistant core gypsum sheathing (ASTM C 1396).

StoQuik Silver NExT-Ventilated combines the strength and durability of PermaBase® Brand Cement Board by National Gypsum or other ASTM C 1325 cement board with superior drainage and drying capability, and the proven performance of Sto's base coats and textured finishes. Sto's finishes are ready-mixed, polymer based exterior textured finishes used as decorative and protective wall finishes.

StoGuard waterproofing/air barrier provides seamless protection against moisture intrusion and air leakage. StoQuik Silver NExT Ventilated allows you to enclose and finish walls in less time, speeding occupancy.

StoQuik Silver NExT Ventilated features easy installation, proven impact and weather resistance, and exceptional moisture protection.



## Uses

For exterior walls in residential, low-rise commercial and institutional construction when high impact, weather resistance and moisture protection are important.

NOTE: Refer to Sto Specification QS300EV and related details for complete information.

Features	Benefits
Cement board substrate	Impact, puncture, mold and moisture resistant
Wide variety of colors, textures and architectural details	Support design freedom, create details that would be difficult or cost prohibitive with other claddings
Sheathing protection, ventilated design	Increased drying and draining of incidental moisture; minimizes risk of water damage
Polymer modified base coats	Excellent adhesion, increased durability and freeze/thaw resistance, high build
Polymer based finish coats	Resist fading, mildew and algae resistant; low maintenance

Contact your local distributor for more information.  
Please visit us at [www.stocorp.com](http://www.stocorp.com) or call us toll-free at 800-221-2397.



# StoQuik® Silver NExT-Ventilated Cement Board Stucco

## Components

The StoQuik Silver NExT Ventilated incorporates StoGuard waterproofing/air barrier or an ASTM D 226 code compliant secondary weather-resistive barrier, PermaBase® by National Gypsum or other ASTM C 1325 compliant cement board, Sto Primer/Adhesive-B or Sto BTS *Xtra*, StoGuard Mesh, Sto Mesh and Sto Essence DPR Finish.

StoQuik Silver NExT Ventilated is applied over the following sheathings that are first applied over the framing and which may be required to

satisfy structural or fire-resistive construction requirements: water-resistant core gypsum sheathing (ASTM C 79/C 1396), Dens Glass® Gold (ASTM C 1177), Exterior or Exposure 1 plywood sheathing or Exposure 1 OSB.

Optional tinted Sto Primer enhances appearances and performance.

See individual product bulletins for specific information on each product.

## Design Requirements

1. L/360 maximum allowable stud deflection. Space studs 16 inches (406 mm) on center maximum. Provide horizontal blocking where needed for continuous support and attachment of cement board perimeter.
2. Verify conformance of wall assembly wind load resistance with project design pressure requirements.
3. Back the cement board with StoGuard waterproofing/air barrier for optimum moisture protection. See information on StoQuik Silver System III if backed with alternative secondary water-resistive barrier such as asphalt saturated felt in compliance with ASTM D 226 (or other appropriate code approved water-resistive barrier).
4. Determine whether a vapor barrier is appropriate in the wall assembly. Refer to 2005 ASHRAE Handbook Fundamentals, Chapter 25. Do not use vapor barriers on the inside of wall assemblies in hot humid climates or on the exterior in cold climates.
5. Prevent water infiltration into or behind the cement board stucco system (refer to Sto Tech Hotline Nos. 0403-BSc, Critical Detail Checklist for Wall Assemblies, and 0603-BSc, Moisture Control Principles for Design and Construction of Wall Assemblies).
6. Provide expansion joints at floor lines, dissimilar materials, where framing material changes, changes in building height, shape or structural system, and at expansion joints in the framing or building. Provide control joints at intervals of 25 ft (7.6 m) maximum in each direction with length/width ratio not to exceed 2-1/2:1. Maximum allowable area without a control joint is 625 ft<sup>2</sup> (58 m<sup>2</sup>).  
When using dark color finishes (lightness value less than 50) the allowable control joint interval/area is reduced to 16 ft /256 ft<sup>2</sup> (4.8 m /23.5 m<sup>2</sup>).
7. Select colors with a lightness value of 30 or more. Refer to Sto Color Chart.
8. When adding foam trim features use foam plastic in compliance with the applicable code. Refer to IBC Chapter 26 and Sto ICC ES Evaluation Report No. 1720. Reinforce all foam trim with base coat and reinforcing mesh. Comply with thickness and slope limitations for foam trim. Refer to Sto Details.
9. Where fire rated wall construction is required start with an existing hourly rated assembly. The addition of the StoQuik Silver System III to an existing hourly rated fire-resistive wall assembly will not detract from the rating. Also see ICC ES Legacy Report Nos. 578 and 5371 for proprietary assemblies.
10. Not intended for use below grade. Maintain minimum 4 inches (102 mm) above earth grade, 2 inches (51 mm) above pavement. Increase distance above grade for snow regions.
11. Do not use as a parapet coping or for other non-vertical weather exposed surfaces .

## Limitations

1. Intended for use in residential and light commercial or institutional construction (low-rise, 3 stories or less) on vertical above grade walls.
2. Minor surface cracking may occur due to stress induced by framing or thermal movement.
3. Telegraphing of studs through finished wall surface may occur in some climates because of thermal bridging effects of studs.
4. Planar irregularities/waviness may be visible in the finished wall surface because of out of plane studs or other framing irregularities. Heavy texture finishes (> 1.5 mm aggregate) and/or two coats of base coat may be required in some cases to minimize the effects of planar irregularities or to improve appearance of fine texture finishes.
5. Requires joints at areas of stress and at intervals to accommodate thermal movement as with conventional stucco wall assemblies.

## Warranty

10 year Limited Materials Warranty. 10 year StoGuard™ Moisture Protection Warranty.

## Attention

This product is intended for use by qualified professional contractors, not consumers, as a component of a larger construction assembly as specified by a qualified design professional, general contractor or builder. It should be installed in accordance with those specifications and Sto's instructions. Sto Corp. disclaims all, and assumes no, liability for on-site inspections, for its products applied improperly, or by unqualified persons or entities, or as part of an improperly designed or constructed building, for the nonperformance of adjacent building components or assemblies, or for other construction activities beyond Sto's control. Improper use of this product or use as part of an improperly designed or constructed larger assembly or building may result in serious damage to this product, and to the structure of the building or its components. **STO CORP. DISCLAIMS ALL WARRANTIES EXPRESSED OR IMPLIED EXCEPT FOR EXPLICIT LIMITED WRITTEN WARRANTIES ISSUED TO AND ACCEPTED BY BUILDING OWNERS IN ACCORDANCE WITH STO'S WARRANTY PROGRAMS WHICH ARE SUBJECT TO CHANGE FROM TIME TO TIME.** For the fullest, most current information on proper application, clean-up, mixing and other specifications and warranties, cautions and disclaimers, please refer to the Sto Corp. website, [www.stocorp.com](http://www.stocorp.com).

**Sto Corp.**  
3800 Camp Creek Parkway  
Building 1400, Suite 120  
Atlanta, GA 30331

Tel: 404-346-3666  
Toll Free: 1-800-221-2397  
Fax: 404-346-3119

[www.stocorp.com](http://www.stocorp.com)

S7408 02/09 VEN 5609  
Printed in the U.S.A.

