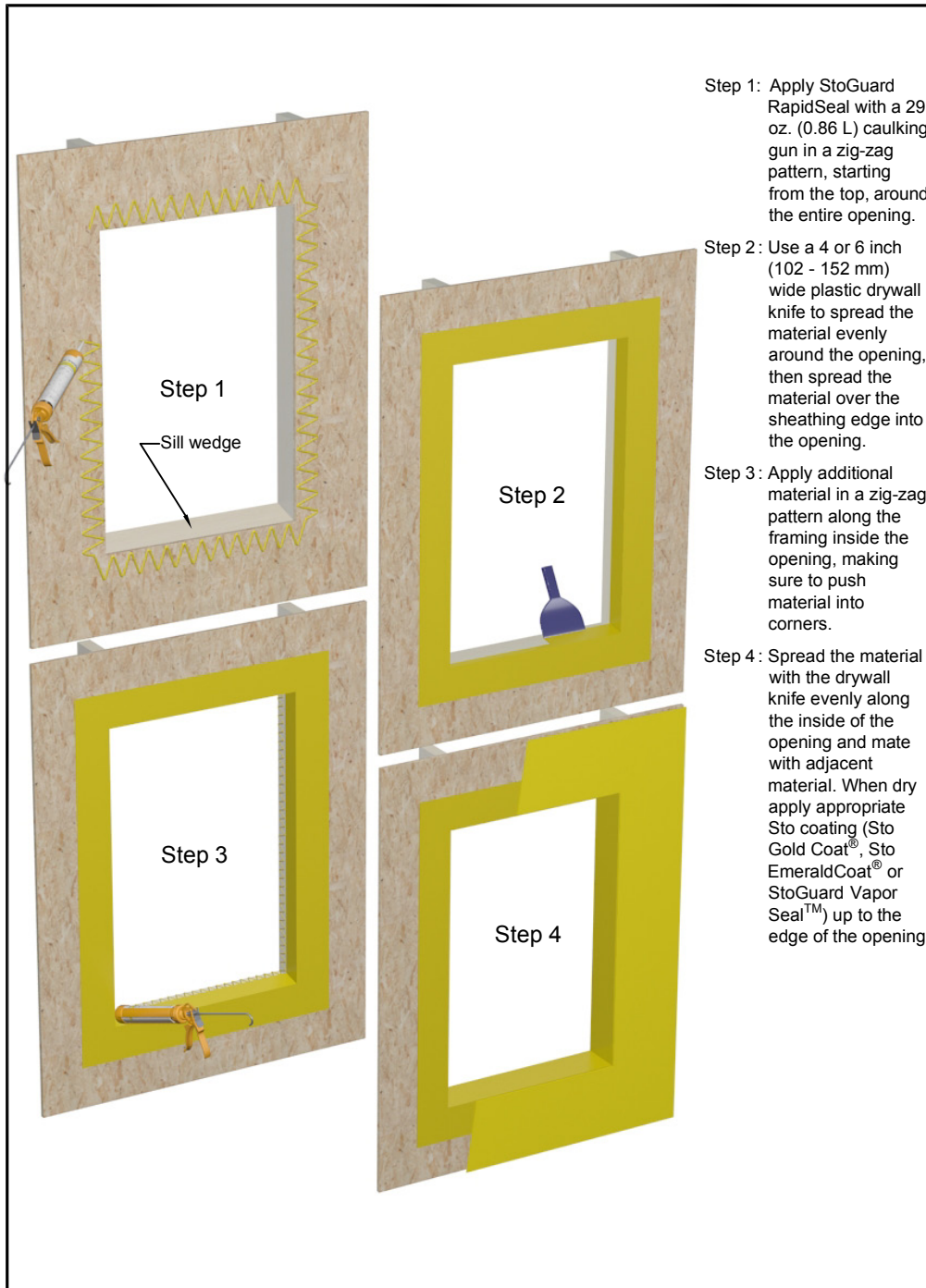




StoGuard[®] RapidSeal[™] Rough Opening Protection

Detail No: 20.20RG

Date: July 2009



Step 1: Apply StoGuard RapidSeal with a 29 oz. (0.86 L) caulking gun in a zig-zag pattern, starting from the top, around the entire opening.

Step 2: Use a 4 or 6 inch (102 - 152 mm) wide plastic drywall knife to spread the material evenly around the opening, then spread the material over the sheathing edge into the opening.

Step 3: Apply additional material in a zig-zag pattern along the framing inside the opening, making sure to push material into corners.

Step 4: Spread the material with the drywall knife evenly along the inside of the opening and mate with adjacent material. When dry apply appropriate Sto coating (Sto Gold Coat[®], Sto EmeraldCoat[®] or StoGuard Vapor Seal[™]) up to the edge of the opening.

Notes:

- 1) Provide sill wedge for slope at sill.
- 2) Final application must be opaque (minimum 12 dry mils), void and pinhole free.
- 3) StoGuard RapidSeal generally dries within 4 hours and windows can usually be installed the same day. Refer to StoGuard RapidSeal product bulletin for additional product information.
- 4) Do not allow more than 30 days weather exposure for StoGuard RapidSeal.
- 5) Refer to Sto details for sill, head flashing, interior and exterior perimeter seals around the opening, and other information pertaining to the window or other object intended to be installed in the opening. Also consult with window (or other object) manufacturer.
- 6) Test the final assembly using materials and sub-trades associated with the project to verify performance.

ATTENTION

Sto products are intended for use by qualified professional contractors, not consumers, as a component of a larger construction assembly as specified by a qualified design professional, general contractor or builder. They should be installed in accordance with those specifications and Sto's instructions. Sto Corp. disclaims all, and assumes no, liability for on-site inspections, for its product applied improperly, or by unqualified persons or entities, or as part of an improperly designed or constructed building, for the nonperformance of adjacent building components or assemblies, or for other construction activities beyond Sto's control. Improper use of Sto products or use as part of an improperly designed or constructed larger assembly or building may result in serious damage to Sto products, and to the structure of the building or its components. STO CORP. DISCLAIMS ALL WARRANTIES EXPRESS OR IMPLIED EXCEPT FOR EXPLICIT LIMITED WRITTEN WARRANTIES ISSUED TO AND ACCEPTED BY BUILDING OWNERS IN ACCORDANCE WITH STO'S WARRANTY PROGRAMS WHICH ARE SUBJECT TO CHANGE FROM TIME TO TIME. For the fullest, most current information on proper application, clean-up, mixing and other specifications and warranties, cautions and disclaimers, please refer to the Sto Corp. website, www.stocorp.com

www.stocorp.com