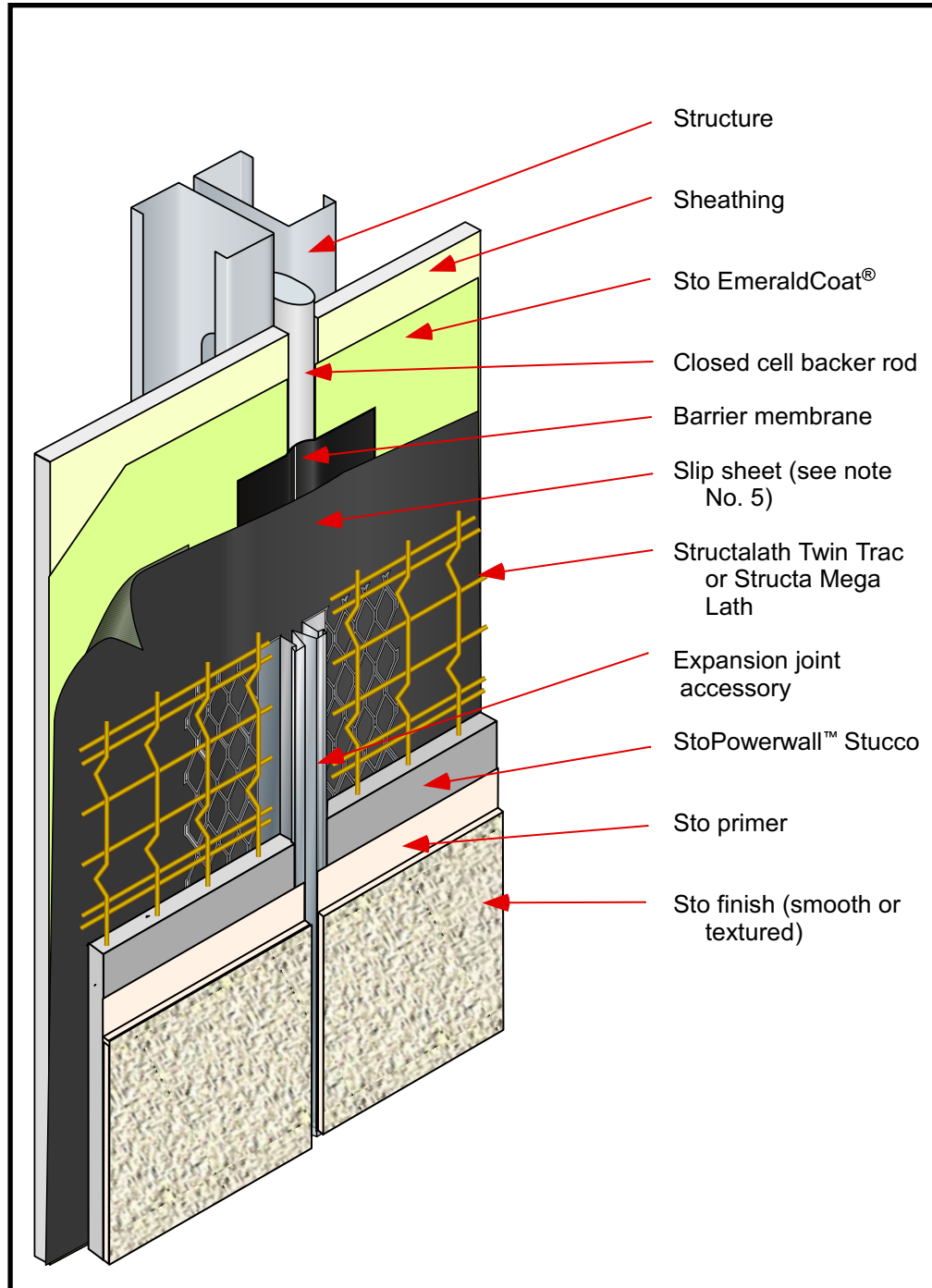


# StoPowerwall™ NExT One Piece Expansion Joint

Date: July 2009



## Notes:

- 1] Provide expansion joints where movement in stucco or substrate is anticipated:
  - at floor lines,
  - at dissimilar construction materials,
  - at existing building or expansion joints in the construction,
  - at changes in building height,
  - at columns or cantilevered areas,
  - at maximum 144 ft<sup>2</sup> (13.4 m<sup>2</sup>) intervals
- 2] Do not exceed length to width ratio of 2.5:1 in expansion joint layout and do not exceed more than 18' (5.5m) in any direction without an expansion joint.
- 3] Provide barrier membrane over the joint in the sheathing to maintain waterproofing/ air barrier integrity. Support with a closed cell backer rod.
- 4] Provide one piece expansion joint accessory over the moisture barrier and lap the expanded metal lath over the flanges. Metal lath must be discontinuous at the expansion joint.
- 5] Provide slip sheet between Sto EmeraldCoat® and wire lath: minimum one layer building paper. Paper may be omitted when permitted by local building authority or when paper-backed stucco lath is used.

## Attention

Sto products are intended for use by qualified professional contractors, not consumers, as a component of a larger construction assembly as specified by a qualified design professional, general contractor or builder. They should be installed in accordance with those specifications and Sto's instructions. Sto Corp. disclaims all, and assumes no, liability for on-site inspections, for its products applied improperly, or by unqualified persons or entities, or as part of an improperly designed or constructed building, for the nonperformance of adjacent building components or assemblies, or for other construction activities beyond Sto's control. Improper use of Sto products or use as part of an improperly designed or constructed larger assembly or building may result in serious damage to Sto products, and to the structure of the building or its components. **STO CORP. DISCLAIMS ALL WARRANTIES EXPRESS OR IMPLIED EXCEPT FOR EXPLICIT LIMITED WRITTEN WARRANTIES ISSUED TO AND ACCEPTED BY BUILDING OWNERS IN ACCORDANCE WITH STO'S WARRANTY PROGRAMS WHICH ARE SUBJECT TO CHANGE FROM TIME TO TIME.** For the fullest, most current information on proper application, clean-up, mixing and other specifications and warranties, cautions and disclaimers, please refer to the Sto Corp. website, [www.stocorp.com](http://www.stocorp.com).