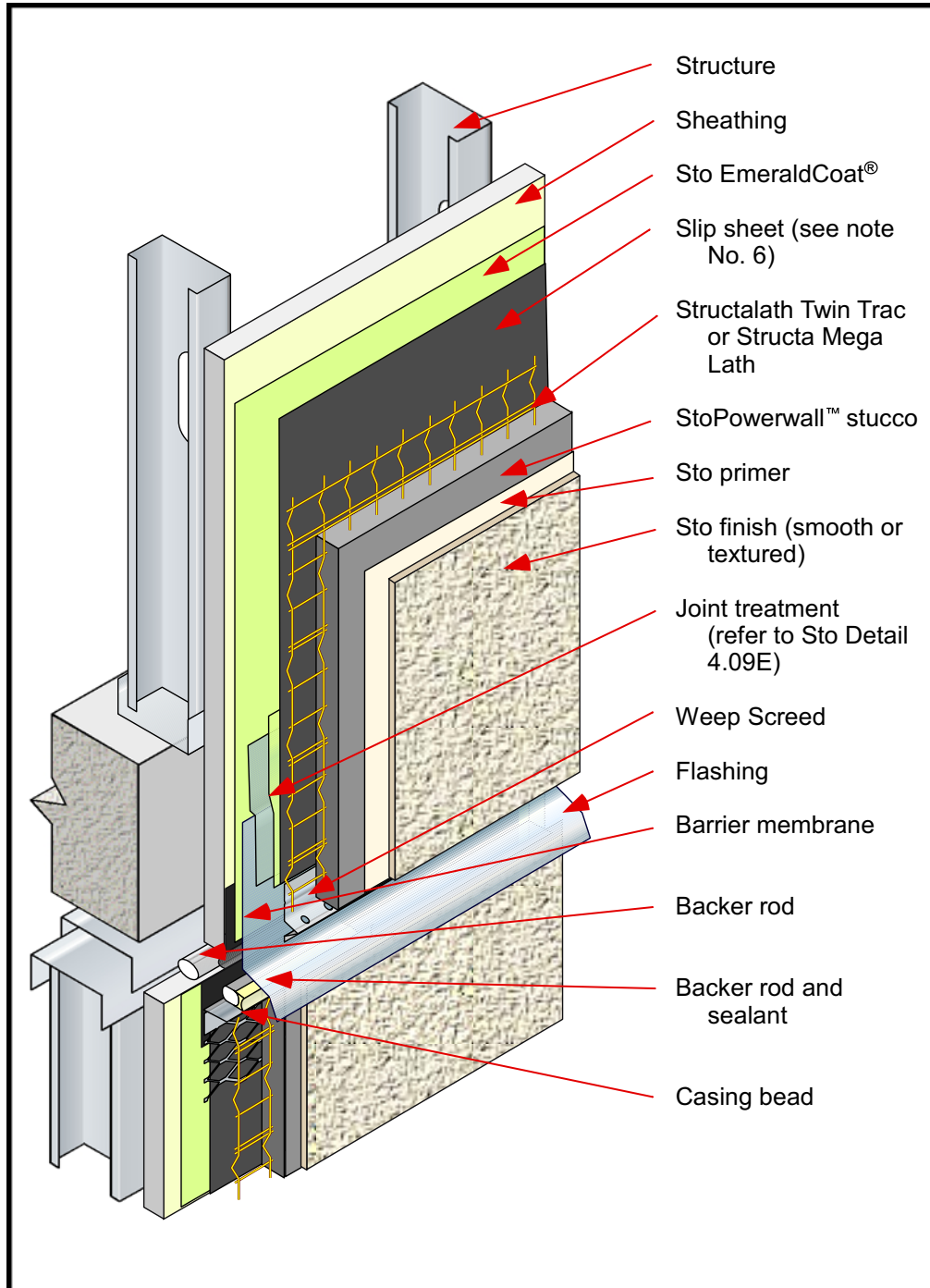


StoPowerwall™ NExT Floor Line Joint

Detail No.: 4.50 ESL

Date: July 2009



Notes:

- 1] Do not attach upper sheathing to nested track. Only attach lower sheathing to nested track.
- 2] The maximum allowable sheathing span at the floor line is 8" (200mm) or as recommended by the sheathing manufacturer.
- 3] A barrier membrane is installed over the joint in the sheathing to provide air barrier continuity and secondary weather protection at the joint location.
- 4] Provide a minimum 3/4" (20mm) joint to accommodate deflection of the floor slab.
- 5] Install a flashing to direct water beyond the face of the cladding below.
- 6] Provide slip sheet between Sto EmeraldCoat® and metal lath: minimum one layer building paper. Paper may be omitted when permitted by the local code authority or when paper-backed stucco lath is used.

www.stocorp.com

Attention

Sto products are intended for use by qualified professional contractors, not consumers, as a component of a larger construction assembly as specified by a qualified design professional, general contractor or builder. They should be installed in accordance with those specifications and Sto's instructions. Sto Corp. disclaims all, and assumes no, liability for on-site inspections, for its products applied improperly, or by unqualified persons or entities, or as part of an improperly designed or constructed building, for the nonperformance of adjacent building components or assemblies, or for other construction activities beyond Sto's control. Improper use of Sto products or use as part of an improperly designed or constructed larger assembly or building may result in serious damage to Sto products, and to the structure of the building or its components. **STO CORP. DISCLAIMS ALL WARRANTIES EXPRESS OR IMPLIED EXCEPT FOR EXPLICIT LIMITED WRITTEN WARRANTIES ISSUED TO AND ACCEPTED BY BUILDING OWNERS IN ACCORDANCE WITH STO'S WARRANTY PROGRAMS WHICH ARE SUBJECT TO CHANGE FROM TIME TO TIME.** For the fullest, most current information on proper application, clean-up, mixing and other specifications and warranties, cautions and disclaimers, please refer to the Sto Corp. website, www.stocorp.com.