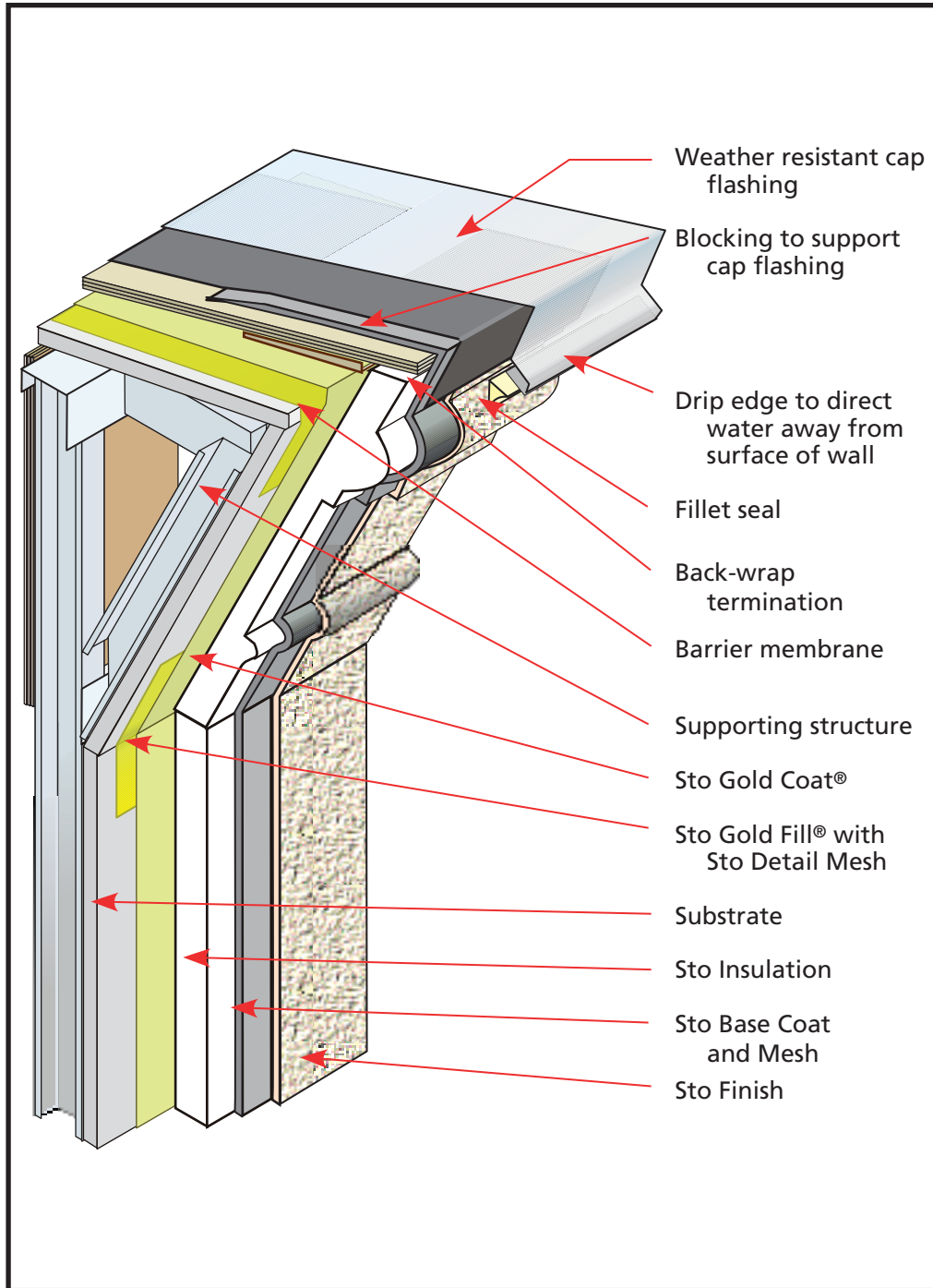




StoTherm™ NExT Termination at Feature Parapet

Detail No.: 10.61

Date: September 2007



Notes:

- 1] The maximum thickness of foam plastic insulation allowed by code is typically 4" (100 mm). Larger features must be framed out as illustrated.
- 2] Provide a barrier membrane over the parapet and integrate it with the roofing or deck waterproofing assembly. This provides air barrier continuity over the parapet and secondary weather protection under the cap flashing.
- 3] Provide minimum 2.5" (65 mm) overlap of flashing over face of EIFS. Increase overlap with building height.
- 4] Install StoGuard over parapet supporting structure lapping onto compatible sheathing.

ATTENTION

Sto products are intended for use by qualified professional contractors, not consumers, as a component of a larger construction assembly as specified by a qualified design professional, general contractor or builder. They should be installed in accordance with those specifications and Sto's instructions. Sto Corp. disclaims all, and assumes no, liability for on-site inspections, for its products applied improperly, or by unqualified persons or entities, or as part of an improperly designed or constructed building, for the nonperformance of adjacent building components or assemblies, or for other construction activities beyond Sto's control. Improper use of Sto products or use as part of an improperly designed or constructed larger assembly or building may result in serious damage to Sto products, and to the structure of the building or its components. **STO CORP. DISCLAIMS ALL WARRANTIES EXPRESS OR IMPLIED EXCEPT FOR EXPLICIT LIMITED WRITTEN WARRANTIES ISSUED TO AND ACCEPTED BY BUILDING OWNERS IN ACCORDANCE WITH STO'S WARRANTY PROGRAMS WHICH ARE SUBJECT TO CHANGE FROM TIME TO TIME.** For the fullest, most current information on proper application, clean-up, mixing and other specifications and warranties, cautions and disclaimers, please refer to the Sto Corp. website, www.stocorp.com.

www.stocorp.com