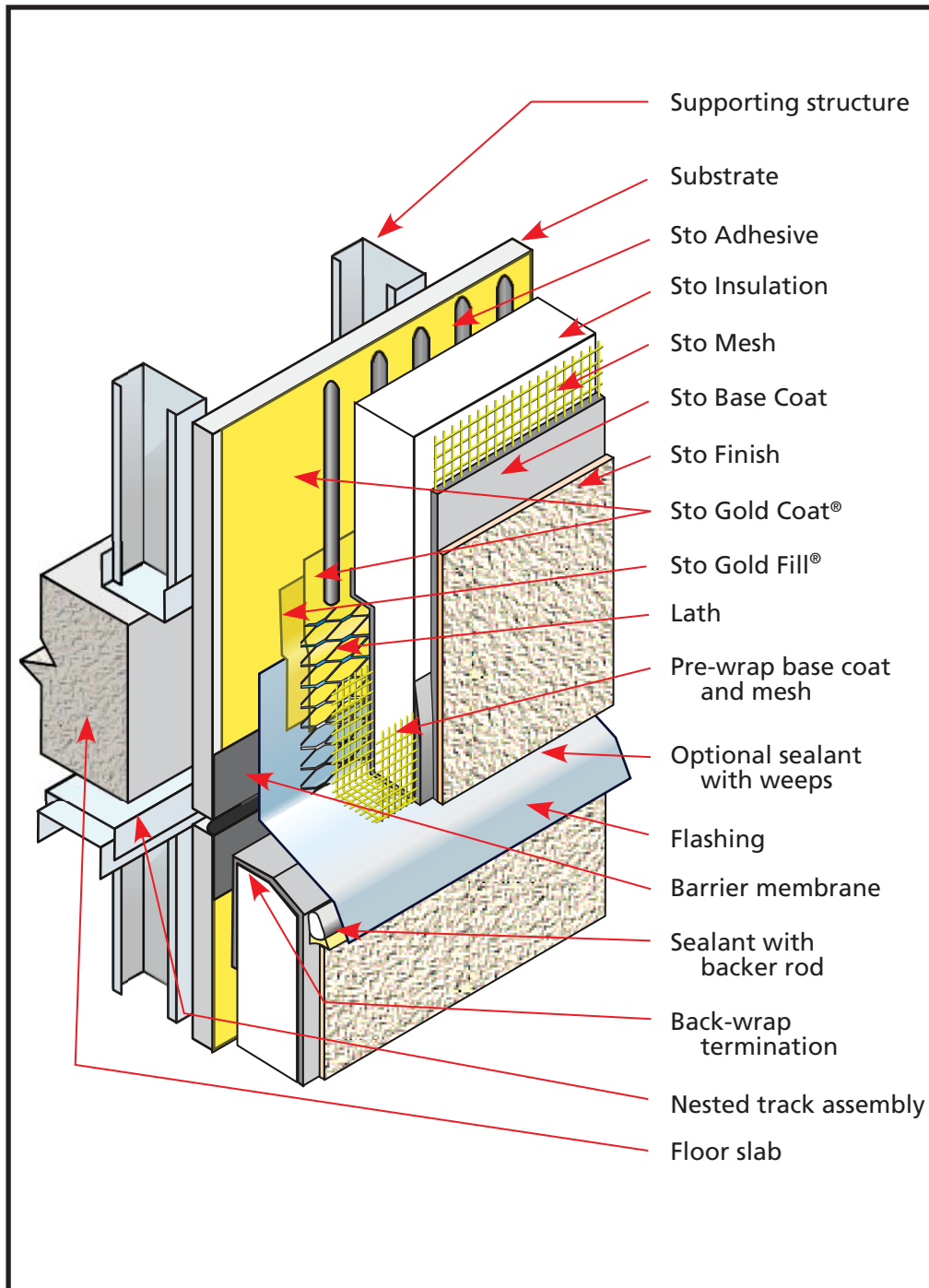




StoTherm™ NExT Floor Line with Joint: Noncombustible Construction

Detail No.: 10.41b

Date: October 2007



Notes:

1. Pre-wrap the insulation board with base coat and mesh prior to installation. Rasp back of insulation to ensure the pre-wrapped insulation board will fit over the lath and permit water to drain freely.
2. Do not attach upper sheathing to nested track. Only attach lower sheathing to nested track.
3. The maximum allowable sheathing span at the floor line is 8" (200 mm) or as recommended by the sheathing manufacturer.
5. A barrier membrane is installed over the joint in the sheathing to provide air barrier continuity and secondary weather protection at the joint location.
6. Install metal flashing to drain out bound of the cladding and integrate it into the StoGuard.
7. Install a 6" (150 mm) strip of expanded metal lath.
8. Provide a minimum 3/4" (20 mm) joint to accommodate deflection of the floor slab.

Sto Gold Coat and Sto Gold Fill are registered trademarks of Sto Corp.

ATTENTION

Sto products are intended for use by qualified professional contractors, not consumers, as a component of a larger construction assembly as specified by a qualified design professional, general contractor or builder. They should be installed in accordance with those specifications and Sto's instructions. Sto Corp. disclaims all, and assumes no, liability for on-site inspections, for its products applied improperly, or by unqualified persons or entities, or as part of an improperly designed or constructed building, for the nonperformance of adjacent building components or assemblies, or for other construction activities beyond Sto's control. Improper use of Sto products or use as part of an improperly designed or constructed larger assembly or building may result in serious damage to Sto products, and to the structure of the building or its components. **STO CORP. DISCLAIMS ALL WARRANTIES EXPRESS OR IMPLIED EXCEPT FOR EXPLICIT LIMITED WRITTEN WARRANTIES ISSUED TO AND ACCEPTED BY BUILDING OWNERS IN ACCORDANCE WITH STO'S WARRANTY PROGRAMS WHICH ARE SUBJECT TO CHANGE FROM TIME TO TIME.** For the fullest, most current information on proper application, clean-up, mixing and other specifications and warranties, cautions and disclaimers, please refer to the Sto Corp. website, www.stocorp.com.