

Tech Hotline

No. 0398-C

Revised: September, 2003

Sto Quik Gold System for Soffits

The Sto Quik Gold System for Soffits is a Direct-Applied Exterior Finish System (DEFS) over Georgia-Pacific Dens-Glass® Gold sheathing for use in weather protected uninsulated exterior soffit or ceiling applications. This system can be used in either new or retrofit construction, in both commercial or residential installations.

Features	Benefits
Integral color	Lasting uniform color
Acrylic or silicone enhanced textured finishes	Attractive look with a wide range of decorative and protective coatings
Light weight	Reduced dead load
Simple, fast installation	Reduced construction costs
Integrally Reinforced	Resists cracking and impact

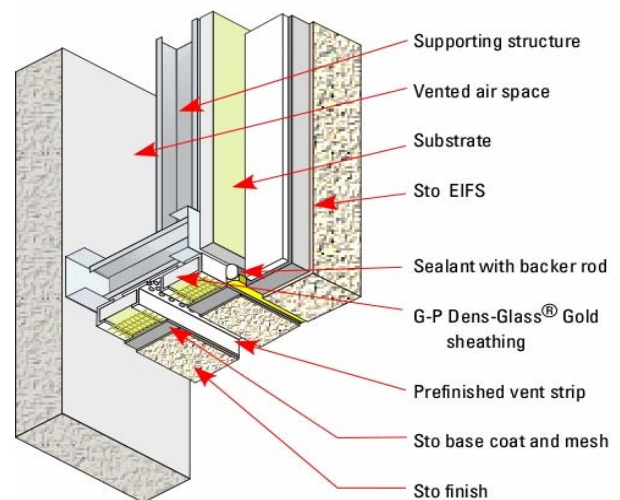


Figure 1: Typical soffit detail with Sto Quik Gold System for Soffits

Components

1. G-P Gypsum Corp. Dens-Glass® Gold sheathing
2. Sto base coat
3. Sto reinforcing mesh
4. Sto Textured finish coats
5. Accessories
- 6.

Installation

1. Install accessories that are non-surface mount to the framing prior to installing G-P Gypsum Dens-Glass® Gold sheathing. This may include the soffit vent, casing beads and expansion joints.

2. Handle and install Dens-Glass® Gold in accordance with specifications and recommendations of G-P Gypsum Corp. In the case of horizontal ceilings and soffits, the maximum frame spacing when 1/2 inch (13 mm) Dens-Glass® Gold is used is 16 inches (406 mm) on center, and the maximum spacing if 5/8 inch (16 mm) Dens-Glass® Gold is used is 24 inches (610 mm) on center.

3. Fasten Dens-Glass® Gold to wood framing with 11 gauge, 7/16 inch (11 mm) head, galvanized nails or equivalent at a minimum length of 1-1/2 inches (38 mm) for 1/2 inch (13 mm) thickness of Dens-Glass® Gold and 1-3/4 inches (44 mm) for 5/8 inch (16 mm) thick Dens-Glass® Gold. Space nails maximum 4 inches (101 mm) on center around the perimeter and 8 inches (202 mm) on center in the field for 1/2 inch (13 mm) Dens-Glass® Gold and maximum 8 inches (202 mm) on center around the perimeter and 8 inches (202 mm) on center in the field for 5/8 inch (16 mm) thick Dens-Glass® Gold.
4. Apply surface mount accessories to Dens-Glass® Gold. These may include casing beads and deep “V” expansion joints. System expansion joints are recommended every 30 feet (9.1 m) on center up to a maximum area of 900 ft² (82.8 m²).
5. Apply base coat to the surface of Dens-Glass® Gold with proper spray equipment or stainless steel trowel to a uniform thickness of approximately 1/16 inch (1.6 mm). Apply base coat in strips of 40 inches (1016 mm) and immediately embed reinforcing mesh into the wet base coat by troweling from the center to the edge of the mesh. Avoid wrinkles in the mesh. Overlap the mesh a minimum 2-1/2 inches (64 mm) at mesh joints and stagger mesh joints minimum 8 inches (203 mm) from sheathing joints.
6. Where surface mount accessories are used, such as deep “V” expansion joints, overlap the base coat and mesh onto the perforated accessory flange, making sure that the base coat and mesh are fully keyed into the flange.
7. Fully embed mesh in the base coat so that the mesh color is not visible after the base coat dries. Feather the mesh overlaps to avoid reading them through the finish coat. Allow the base coat to thoroughly dry before applying finish.
8. Apply textured finish coat in accordance with standard application procedures. For best results, prime the base coat before finishing.

Limitation

Prevent the accumulation of water behind the finish system, either by condensation or leakage. Design for maximum allowable system deflection, normal to the plane of the soffit or ceiling, of L/360.

Building Code Compliance

As painting is generally recognized by building codes to be acceptable on gypsum based soffit boards, the application of this DEF System to weather protected ceiling and soffit areas generally does not require a code evaluation report. However, always consult local codes to verify compliance with any specific code requirements that may exist.

Warranty

Five (5) year limited materials warranty available. For additional information consult your local Sto sales representative, Sto distributor or the Sto Technical Department by calling: (800) 221-2397.