

## Stucco: StoPowerwall Insulated - 3.XX Series

### Details Index

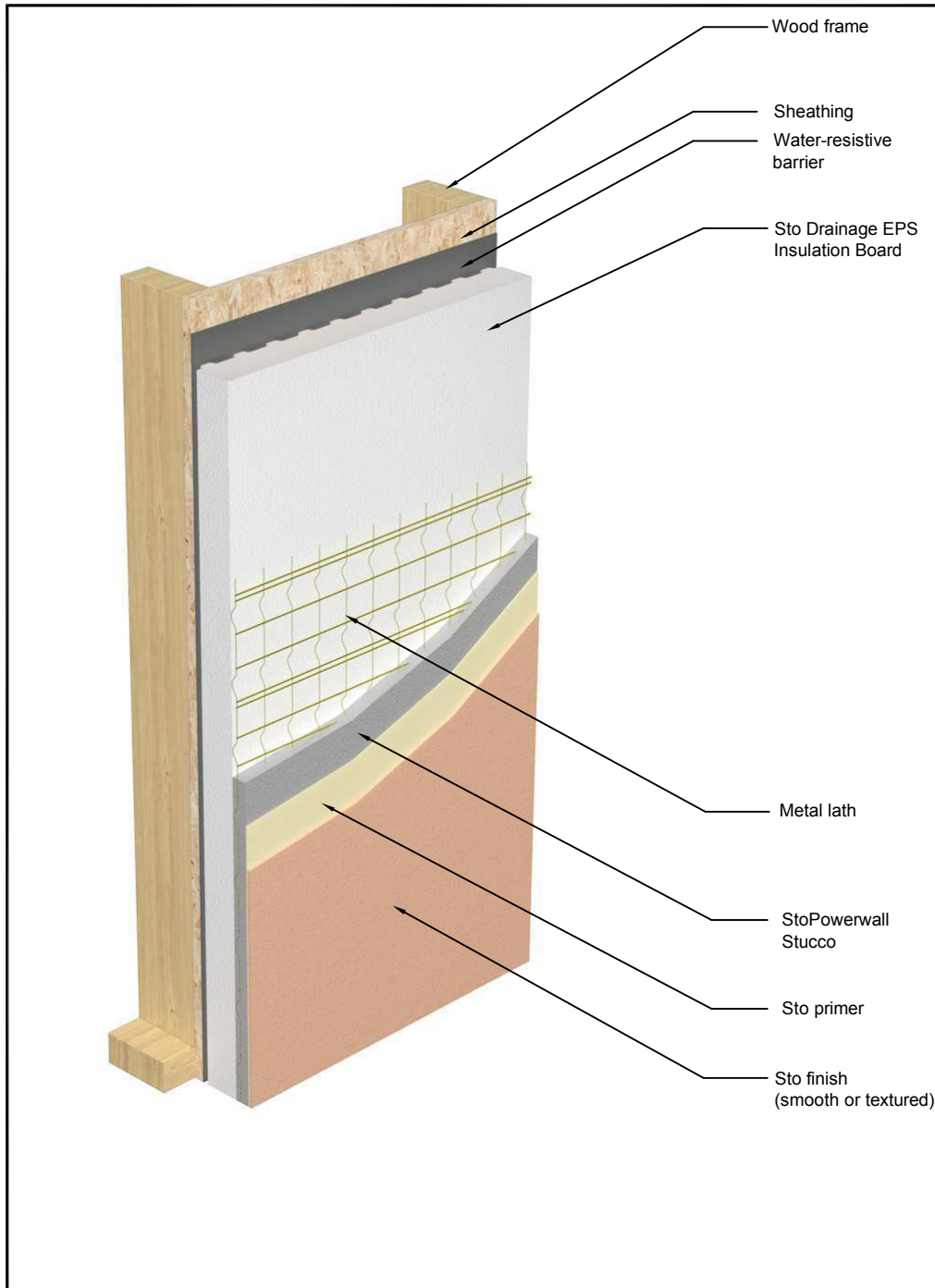
| Description  | Detail# |
|--|---------|
| System Components  | 3.00    |
| Termination at Grade   | 3.01a   |
| Termination at Grade: Sidewalk/Pavers  | 3.01b   |
| Rough Opening Protection   | 3.20    |
| Brick Mold Window Head/Jamb: Rough Opening Protection with Window Installed          | 3.24a1  |
| Brick Mold Window Head/Jamb: Stucco Return and Perimeter Seals                       | 3.24a2  |
| Brick Mold Window Sill/Jamb: Rough Opening Protection and Pan Flashing at Sill       | 3.26a1  |
| Brick Mold Window Sill/Jamb: Rough Opening Protection with Window Installed          | 3.26a2  |
| Brick Mold Window Sill/Jamb: Window Installed with Stucco Return and Perimeter Seals | 3.26a3  |
| Termination at Deck  | 3.32    |
| Termination at Eave/Soffit   | 3.40    |
| Floor Line with Joint  | 3.41    |
| Inside Corner  | 3.53    |
| Outside Corner   | 3.54    |
| Roof / Wall Diverter Flashing  | 3.62    |
| Foam Shape Build-Outs  | 3.70    |
| Termination at Fixture Penetration through Stucco                                    | 3.73    |
| Surface Mount Fixture Attachment through Stucco                                      | 3.74    |
| Termination at Pipe Penetration through Stucco                                       | 3.76    |



Detail No: 3.00

Date: July 2009

# StoPowerwall™ Insulated System Components



## Notes:

- 1) StoPowerwall Insulated components:
  - Sto Drainage EPS Insulation Board, minimum 1-1/2 inches (38mm) thick, maximum 2 inches (51mm) thick.
  - Sto Powerwall Stucco-minimum 5/8 inches (16mm) thick.
  - Sto primer
  - Sto finish
- 2) Provide Sto Drainage EPS Insulation Board with tongue and groove horizontal joints and 1.5 pcf (24 kg/m<sup>3</sup>) density in conformance with ASTM C 578 (latest version), Type II requirements. Board must be recognized in a current ICC-ES evaluation report. Refer to Sto ICC-ESR 2323 for detailed information and Sto Specifications S503.
- 3) Provide code compliant water-resistive barrier: two layers Grade D kraft building paper or one layer 60 minute Grade D kraft building paper.

## ATTENTION

Sto products are intended for use by qualified professional contractors, not consumers, as a component of a larger construction assembly as specified by a qualified design professional, general contractor or builder. They should be installed in accordance with those specifications and Sto's instructions. Sto Corp. disclaims all, and assumes no, liability for on-site inspections, for its product applied improperly, or by unqualified persons or entities, or as part of an improperly designed or constructed building, for the nonperformance of adjacent building components or assemblies, or for other construction activities beyond Sto's control. Improper use of Sto products or use as part of an improperly designed or constructed larger assembly or building may result in serious damage to Sto products, and to the structure of the building or its components. STO CORP. DISCLAIMS ALL WARRANTIES EXPRESS OR IMPLIED EXCEPT FOR EXPLICIT LIMITED WRITTEN WARRANTIES ISSUED TO AND ACCEPTED BY BUILDING OWNERS IN ACCORDANCE WITH STO'S WARRANTY PROGRAMS WHICH ARE SUBJECT TO CHANGE FROM TIME TO TIME. For the fullest, most current information on proper application, clean-up, mixing and other specifications and warranties, cautions and disclaimers, please refer to the Sto Corp. website, [www.stocorp.com](http://www.stocorp.com)

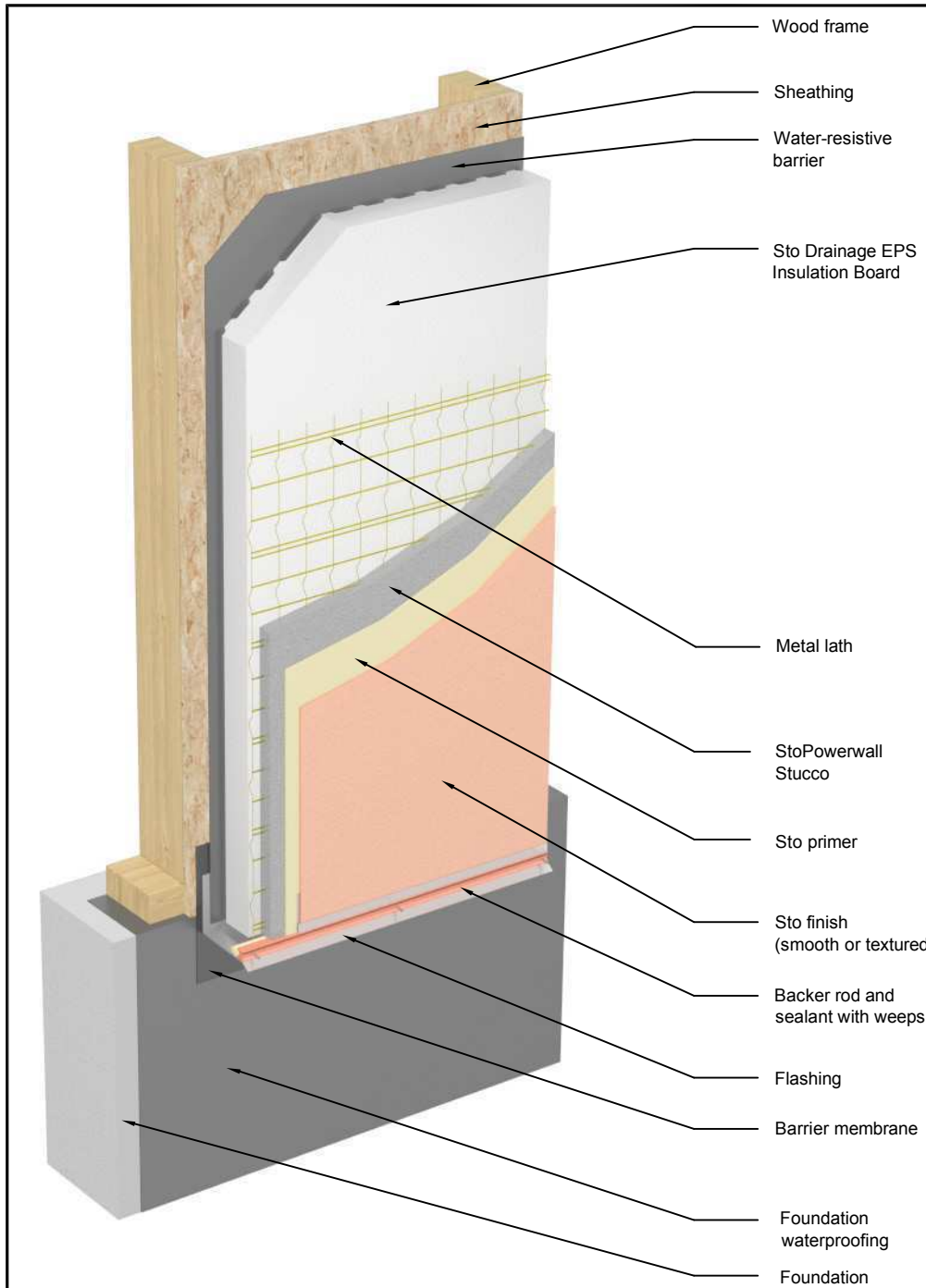
[www.stocorp.com](http://www.stocorp.com)



# StoPowerwall™ Insulated Termination at Grade

Detail No: 3.01a

Date: July 2009



## Notes:

- 1) StoPowerwall Insulated components:
  - Sto Drainage EPS Insulation Board, minimum 1-1/2 inches (38mm) thick, maximum 2 inches (51mm) thick.
  - StoPowerwall Stucco - minimum 5/8 (16mm) thick
  - Sto primer
  - Sto finish
- 2) Provide Sto Drainage EPS Insulation Board with tongue and groove horizontal joints and 1.5 pcf (24 kg/m<sup>3</sup>) density in conformance with ASTM C 578 (latest version), Type II requirements. Board must be recognized in a current ICC-ES evaluation report. Refer to Sto ICC-ESR 2323 for detailed information and Sto Specifications S503.
- 3) Provide code compliant water-resistive barrier: two layers Grade D kraft building paper or one layer 60 minute Grade D kraft building paper.
- 4) Provide UV resistant barrier membrane at base of wall or protect with coating or other material to prevent UV degradation.
- 5) Provide backer rod and sealant with weeps at base of wall. Provide flashing with minimum 3-1/2" (89mm) back leg that terminates minimum 1 inch (25mm) below sill plate. Provide minimum 6 inches (152mm) clearance between flashing drip edge and grade.

## ATTENTION

Sto products are intended for use by qualified professional contractors, not consumers, as a component of a larger construction assembly as specified by a qualified design professional, general contractor or builder. They should be installed in accordance with those specifications and Sto's instructions. Sto Corp. disclaims all, and assumes no, liability for on-site inspections, for its product applied improperly, or by unqualified persons or entities, or as part of an improperly designed or constructed building, for the nonperformance of adjacent building components or assemblies, or for other construction activities beyond Sto's control. Improper use of Sto products or use as part of an improperly designed or constructed larger assembly or building may result in serious damage to Sto products, and to the structure of the building or its components. STO CORP. DISCLAIMS ALL WARRANTIES EXPRESS OR IMPLIED EXCEPT FOR EXPLICIT LIMITED WRITTEN WARRANTIES ISSUED TO AND ACCEPTED BY BUILDING OWNERS IN ACCORDANCE WITH STO'S WARRANTY PROGRAMS WHICH ARE SUBJECT TO CHANGE FROM TIME TO TIME. For the fullest, most current information on proper application, clean-up, mixing and other specifications and warranties, cautions and disclaimers, please refer to the Sto Corp. website, [www.stocorp.com](http://www.stocorp.com)

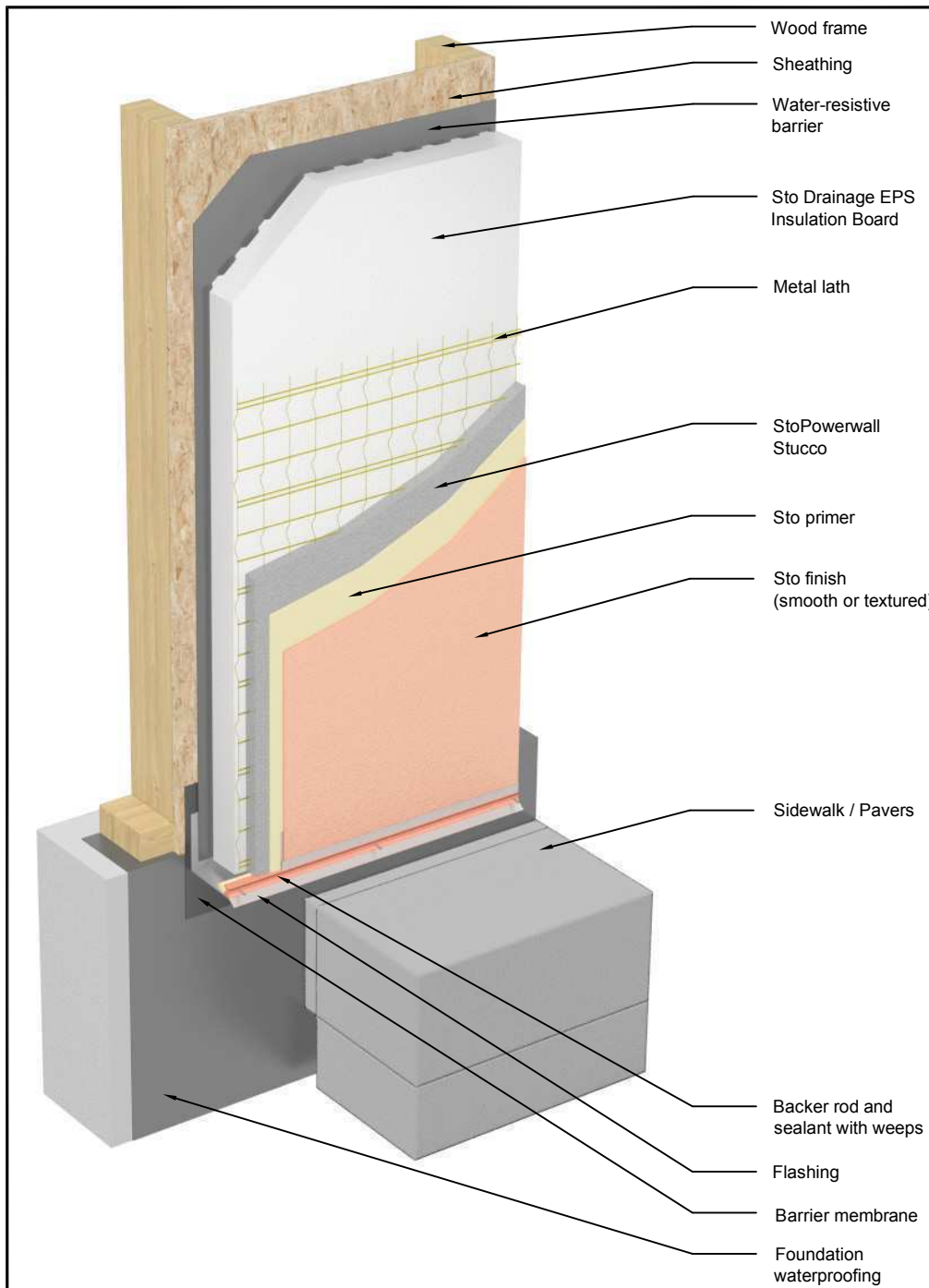
[www.stocorp.com](http://www.stocorp.com)



# StoPowerwall™ Insulated Termination at Grade: Sidewalk / Pavers

Detail No: 3.01b

Date: July 2009



## Notes:

- 1) StoPowerwall Insulated components:
  - Sto Drainage EPS Insulation Board, minimum 1-1/2 inches (38mm) thick, maximum 2 inches (51mm) thick.
  - StoPowerwall Stucco - minimum 5/8 (16mm) thick
  - Sto primer
  - Sto finish
- 2) Provide Sto Drainage EPS Insulation Board with tongue and groove horizontal joints and 1.5 pcf (24 kg/m<sup>3</sup>) density in conformance with ASTM C 578 (latest version), Type II requirements. Board must be recognized in a current ICC-ES evaluation report. Refer to Sto ICC-ESR 2323 for detailed information and Sto Specifications S503.
- 3) Provide code compliant water-resistive barrier: two layers Grade D kraft building paper or one layer 60 minute Grade D kraft building paper.
- 4) Provide UV resistant barrier membrane at base of wall or protect with coating or other material to prevent UV degradation.
- 5) Provide backer rod and sealant with weeps at base of wall. Provide flashing with minimum 3-1/2" (89mm) back leg that terminates minimum 1 inch (25 mm) below sill plate. Provide minimum 2 inches (51mm) clearance between flashing drip edge and finished sidewalk/paver surface. Increase distance where snow and ice accumulate.

## ATTENTION

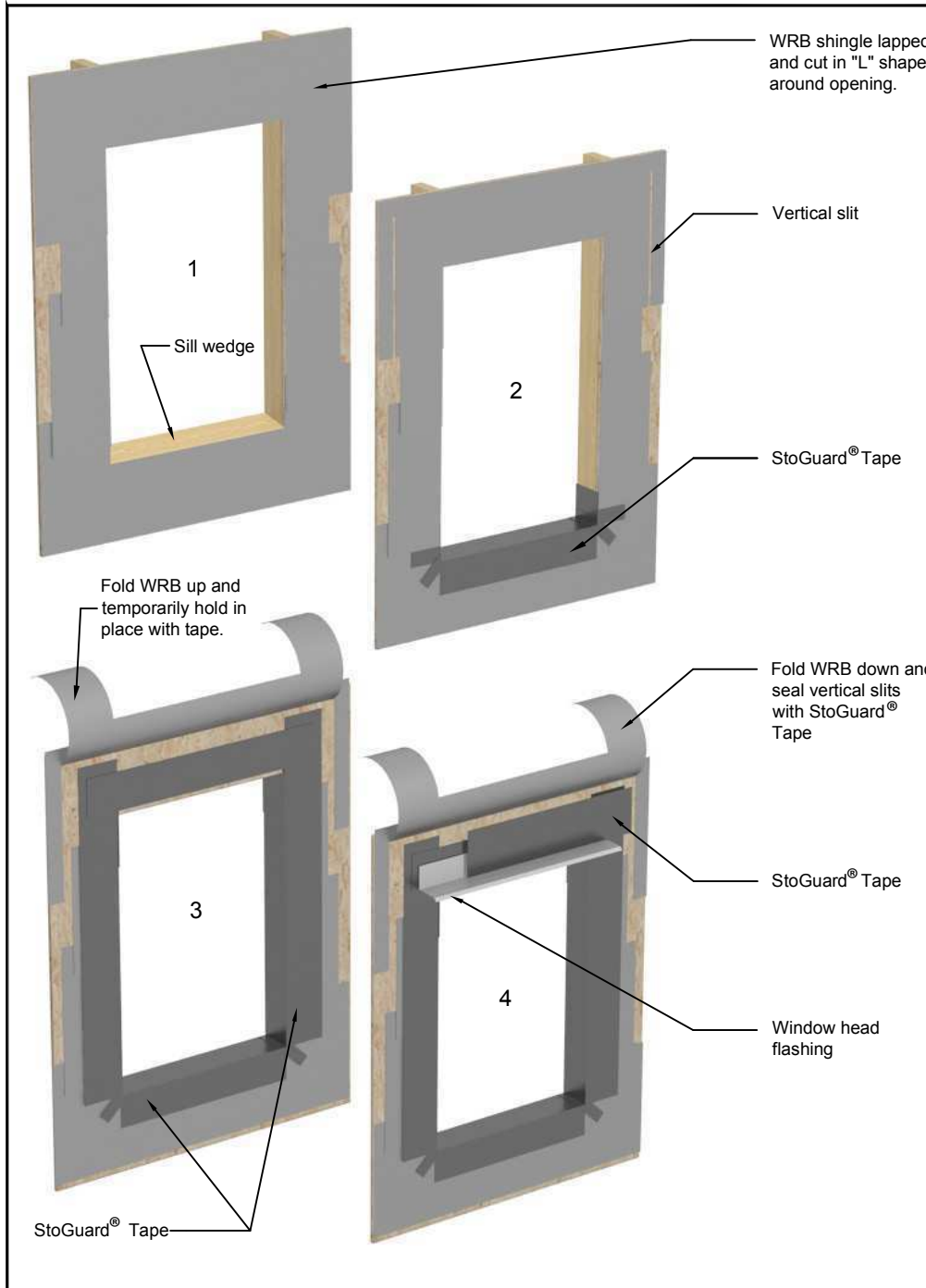
Sto products are intended for use by qualified professional contractors, not consumers, as a component of a larger construction assembly as specified by a qualified design professional, general contractor or builder. They should be installed in accordance with those specifications and Sto's instructions. Sto Corp. disclaims all, and assumes no, liability for on-site inspections, for its product applied improperly, or by unqualified persons or entities, or as part of an improperly designed or constructed building, for the nonperformance of adjacent building components or assemblies, or for other construction activities beyond Sto's control. Improper use of Sto products or use as part of an improperly designed or constructed larger assembly or building may result in serious damage to Sto products, and to the structure of the building or its components. STO CORP. DISCLAIMS ALL WARRANTIES EXPRESS OR IMPLIED EXCEPT FOR EXPLICIT LIMITED WRITTEN WARRANTIES ISSUED TO AND ACCEPTED BY BUILDING OWNERS IN ACCORDANCE WITH STO'S WARRANTY PROGRAMS WHICH ARE SUBJECT TO CHANGE FROM TIME TO TIME. For the fullest, most current information on proper application, clean-up, mixing and other specifications and warranties, cautions and disclaimers, please refer to the Sto Corp. website, [www.stocorp.com](http://www.stocorp.com)

[www.stocorp.com](http://www.stocorp.com)

# StoPowerwall™ Insulated Rough Opening Protection

Detail No: 3.20

Date: July 2009



## Notes:

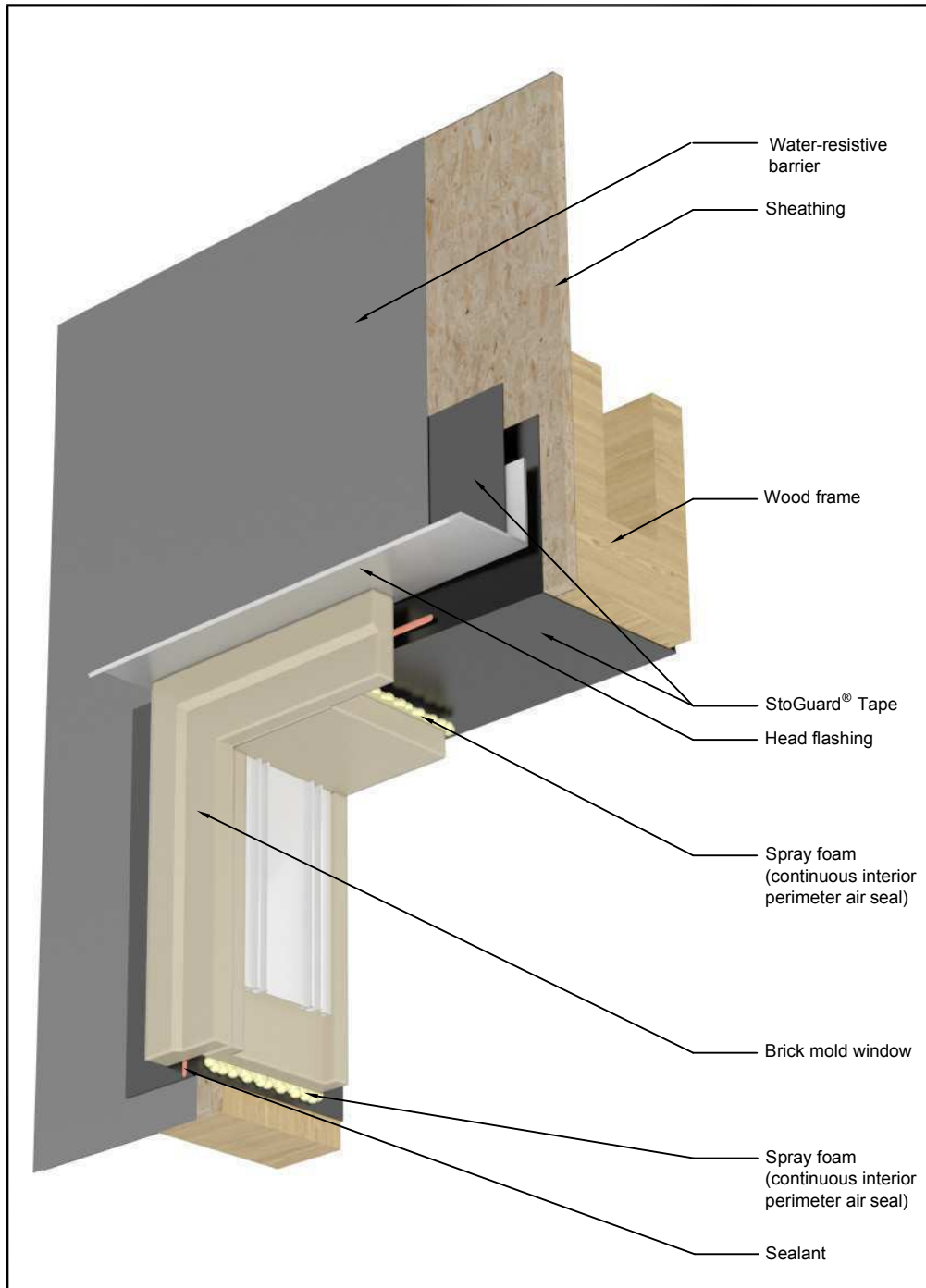
- 1) Provide code compliant water-resistive barrier (WRB): two layers Grade D kraft building paper or one layer 60 minute Grade D kraft building paper. Install WRB in compliance with code. Provide sill wedge for slope at sill.
- 2) Provide 9 inch (229 mm) wide StoGuard® Tape for sill. Install along sill folding up jambs minimum 4 inches (203 mm). Install 2 inch (51 mm) wide StoGuard® Tape corner tabs.
- 3) Provide 9 inch (229 mm) wide StoGuard® Tape for head and jambs. Slit and fold up WRB. Install StoGuard® Tape along jambs overlapping sill piece minimum 3 inches (76 mm) and extending past head minimum 4 inches (102 mm). Then install head piece overlapping onto jamb pieces minimum 4 inches (102mm).
- 4) Provide code compliant head flashing and splice from flashing back leg to sheathing with minimum 6 inch (76 mm) wide StoGuard® Tape, extending past jamb of opening minimum 8 inches (203 mm) in each direction. Fold down WRB (cut around head flashing if needed) and seal slits with minimum 3 inch wide (76 mm) StoGuard® Tape.
- 5) When installing StoGuard® Tape:
  - pre-cut and pre-fit pieces for precision and productivity
  - use primer for best adhesion to surfaces, including tape to tape overlaps
  - overlap minimum 3 inches (76 mm) at all adjacent surfaces and at tape to tape overlaps
  - after pressing tape into place by hand apply firm uniform pressure with a pvc or hard rubber roller
  - Do not allow more than 30 days weather exposure for WRB or StoGuard® Tape.

## ATTENTION

Sto products are intended for use by qualified professional contractors, not consumers, as a component of a larger construction assembly as specified by a qualified design professional, general contractor or builder. They should be installed in accordance with those specifications and Sto's instructions. Sto Corp. disclaims all, and assumes no, liability for on-site inspections, for its product applied improperly, or by unqualified persons or entities, or as part of an improperly designed or constructed building, for the nonperformance of adjacent building components or assemblies, or for other construction activities beyond Sto's control. Improper use of Sto products or use as part of an improperly designed or constructed larger assembly or building may result in serious damage to Sto products, and to the structure of the building or its components. STO CORP. DISCLAIMS ALL WARRANTIES EXPRESS OR IMPLIED EXCEPT FOR EXPLICIT LIMITED WRITTEN WARRANTIES ISSUED TO AND ACCEPTED BY BUILDING OWNERS IN ACCORDANCE WITH STO'S WARRANTY PROGRAMS WHICH ARE SUBJECT TO CHANGE FROM TIME TO TIME. For the fullest, most current information on proper application, clean-up, mixing and other specifications and warranties, cautions and disclaimers, please refer to the Sto Corp. website, [www.stocorp.com](http://www.stocorp.com)

[www.stocorp.com](http://www.stocorp.com)

# StoPowerwall™ Insulated Brick Mold Window Head/Jamb: Rough Opening Protection with Window Installed



## Notes:

- 1) Protect rough opening head and jamb with StoGuard® Tape folded minimum 4 inches (102 mm) onto adjacent wall area (head) and onto water-resistive barrier (jamb).
- 2) Consult with window and sealant manufacturer to verify installation detailing.
- 3) Refer to Sto Detail 3.20 for rough opening protection, and Sto Detail 3.24a2 for window installation and complete assembly. Refer to Sto Details 3.26a1, 3.26a2, and 3.26a3 for detailing at sill/jamb.
- 4) Test the final assembly using materials and sub-trades associated with the project to verify performance.

## ATTENTION

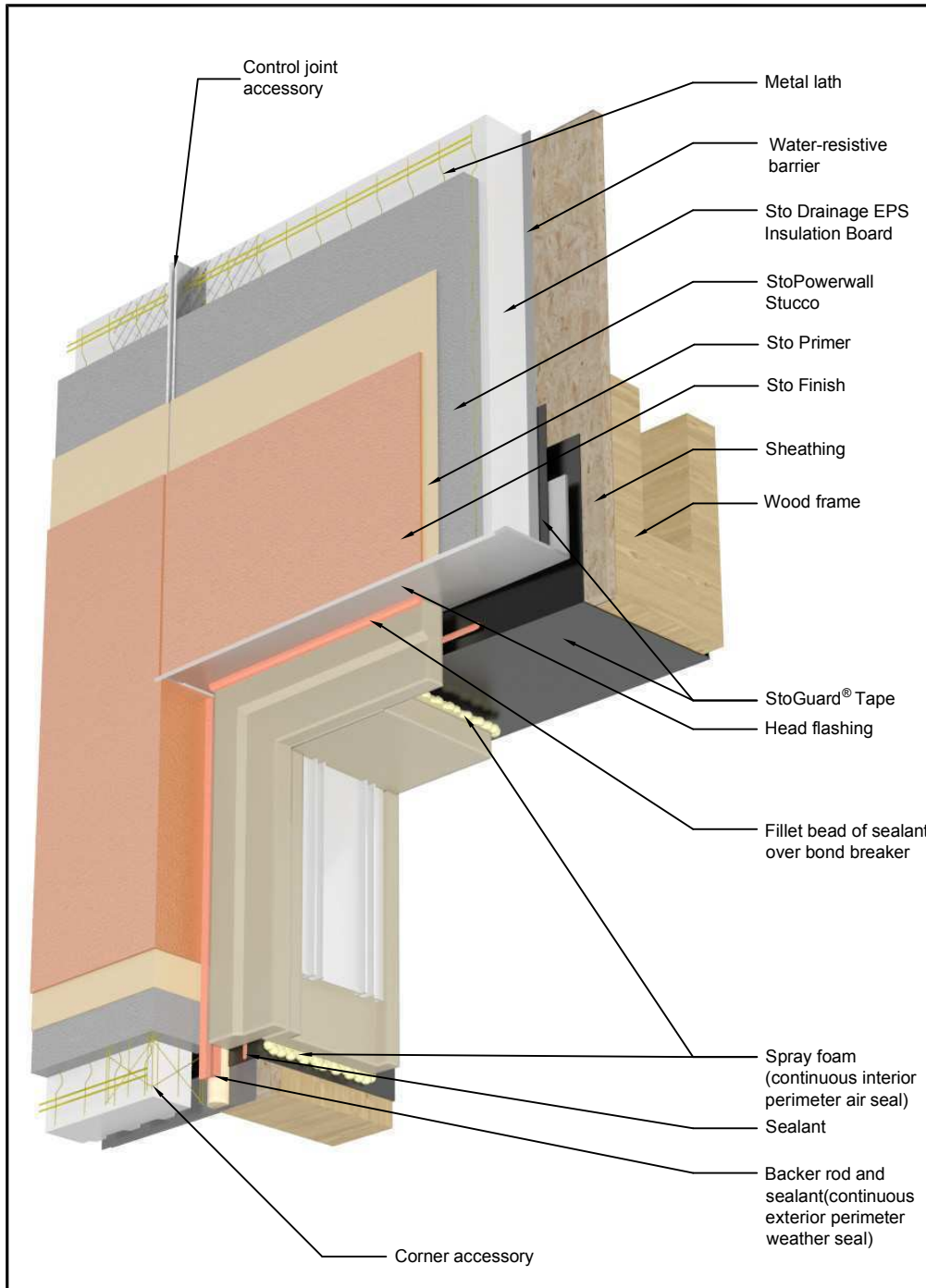
Sto products are intended for use by qualified professional contractors, not consumers, as a component of a larger construction assembly as specified by a qualified design professional, general contractor or builder. They should be installed in accordance with those specifications and Sto's instructions. Sto Corp. disclaims all, and assumes no, liability for on-site inspections, for its product applied improperly, or by unqualified persons or entities, or as part of an improperly designed or constructed building, for the nonperformance of adjacent building components or assemblies, or for other construction activities beyond Sto's control. Improper use of Sto products or use as part of an improperly designed or constructed larger assembly or building may result in serious damage to Sto products, and to the structure of the building or its components. STO CORP. DISCLAIMS ALL WARRANTIES EXPRESS OR IMPLIED EXCEPT FOR EXPLICIT LIMITED WRITTEN WARRANTIES ISSUED TO AND ACCEPTED BY BUILDING OWNERS IN ACCORDANCE WITH STO'S WARRANTY PROGRAMS WHICH ARE SUBJECT TO CHANGE FROM TIME TO TIME. For the fullest, most current information on proper application, clean-up, mixing and other specifications and warranties, cautions and disclaimers, please refer to the Sto Corp. website, [www.stocorp.com](http://www.stocorp.com)



**StoPowerwall™ Insulated  
Brick Mold Window Head/Jamb:  
Stucco Return and Perimeter Seals**

**Detail No: 3.24a2**

**Date: July 2009**



**Notes:**

- 1) Provide continuous perimeter exterior weather seal.
- 2) Provide continuous perimeter interior air seal.
- 3) Consult with window and sealant manufacturer to verify installation detailing.
- 4) Refer to Sto Detail 3.20 for rough opening protection and Sto Details 3.26a1, 3.26a2, and 3.26a3 for detailing at sill / jamb.
- 5) Test the final assembly using materials and sub-trades associated with the project to verify performance.

**ATTENTION**

Sto products are intended for use by qualified professional contractors, not consumers, as a component of a larger construction assembly as specified by a qualified design professional, general contractor or builder. They should be installed in accordance with those specifications and Sto's instructions. Sto Corp. disclaims all, and assumes no, liability for on-site inspections, for its product applied improperly, or by unqualified persons or entities, or as part of an improperly designed or constructed building, for the nonperformance of adjacent building components or assemblies, or for other construction activities beyond Sto's control. Improper use of Sto products or use as part of an improperly designed or constructed larger assembly or building may result in serious damage to Sto products, and to the structure of the building or its components. STO CORP. DISCLAIMS ALL WARRANTIES EXPRESS OR IMPLIED EXCEPT FOR EXPLICIT LIMITED WRITTEN WARRANTIES ISSUED TO AND ACCEPTED BY BUILDING OWNERS IN ACCORDANCE WITH STO'S WARRANTY PROGRAMS WHICH ARE SUBJECT TO CHANGE FROM TIME TO TIME. For the fullest, most current information on proper application, clean-up, mixing and other specifications and warranties, cautions and disclaimers, please refer to the Sto Corp. website, [www.stocorp.com](http://www.stocorp.com)

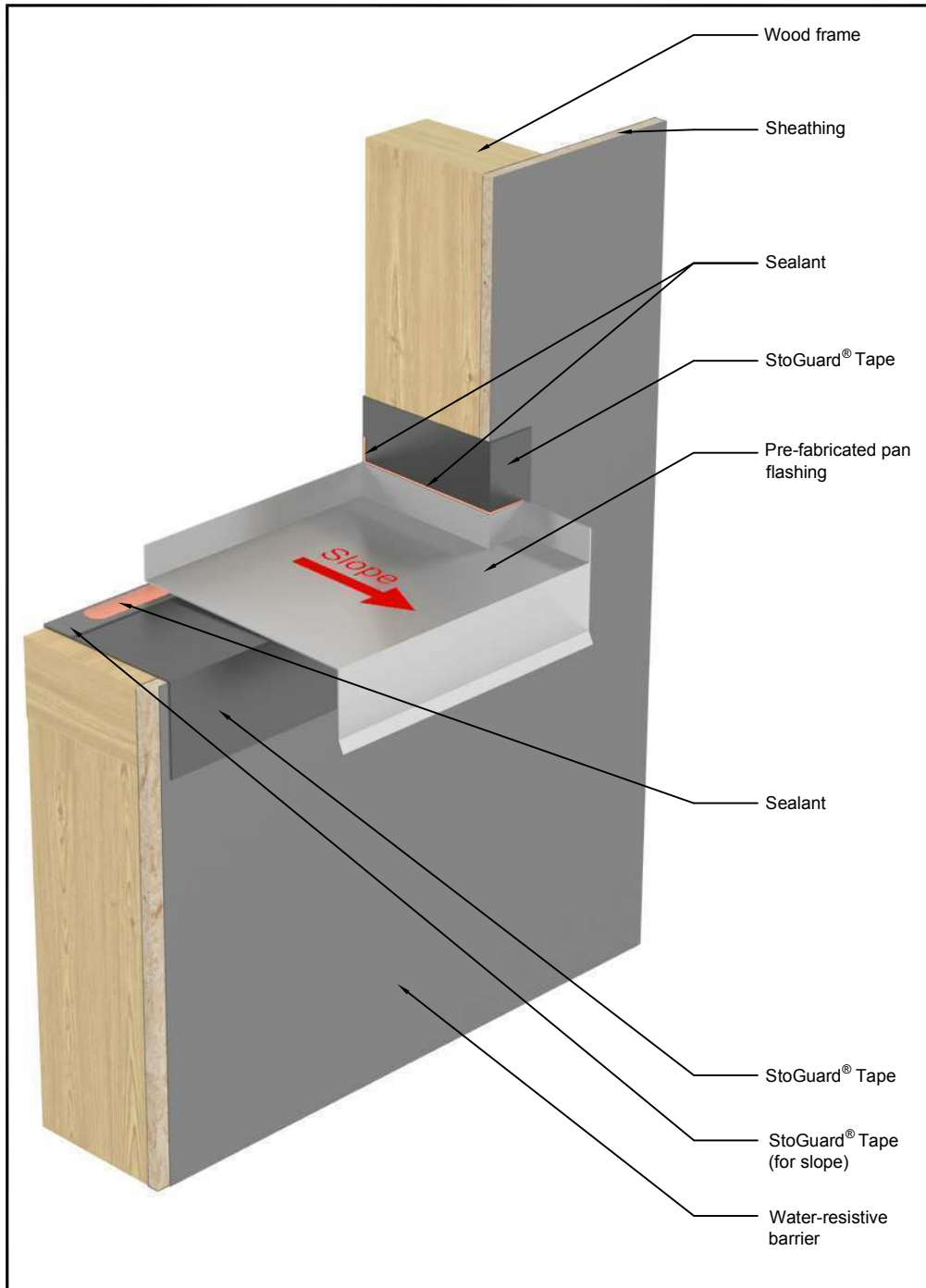
[www.stocorp.com](http://www.stocorp.com)



# StoPowerwall™ Insulated Brick Mold Window Sill/Jamb: Rough Opening Protection and Pan Flashing at Sill

Detail No: 3.26a1

Date: July 2009



## Notes:

- 1) Protect rough opening sill and jamb with StoGuard® Tape folded minimum 4 inches (102 mm) up jamb and onto adjacent wall area.
- 2) Install StoGuard® Tape strip at back of opening to create slope to exterior.
- 3) Secure pre-fabricated pan flashing (by others) into place. Bed in sealant at sill and jambs.
- 4) Refer to Sto Detail 3.20 for rough opening protection and Sto Details 3.26a2 and 3.26a3 for window installation and complete assembly, respectively. Refer to Sto Details 3.24a1 and 3.24a2 for detailing at head/jamb.
- 5) Test the final assembly using materials and sub-trades associated with the project to verify performance.

## ATTENTION

Sto products are intended for use by qualified professional contractors, not consumers, as a component of a larger construction assembly as specified by a qualified design professional, general contractor or builder. They should be installed in accordance with those specifications and Sto's instructions. Sto Corp. disclaims all, and assumes no, liability for on-site inspections, for its product applied improperly, or by unqualified persons or entities, or as part of an improperly designed or constructed building, for the nonperformance of adjacent building components or assemblies, or for other construction activities beyond Sto's control. Improper use of Sto products or use as part of an improperly designed or constructed larger assembly or building may result in serious damage to Sto products, and to the structure of the building or its components. STO CORP. DISCLAIMS ALL WARRANTIES EXPRESS OR IMPLIED EXCEPT FOR EXPLICIT LIMITED WRITTEN WARRANTIES ISSUED TO AND ACCEPTED BY BUILDING OWNERS IN ACCORDANCE WITH STO'S WARRANTY PROGRAMS WHICH ARE SUBJECT TO CHANGE FROM TIME TO TIME. For the fullest, most current information on proper application, clean-up, mixing and other specifications and warranties, cautions and disclaimers, please refer to the Sto Corp. website, [www.stocorp.com](http://www.stocorp.com)

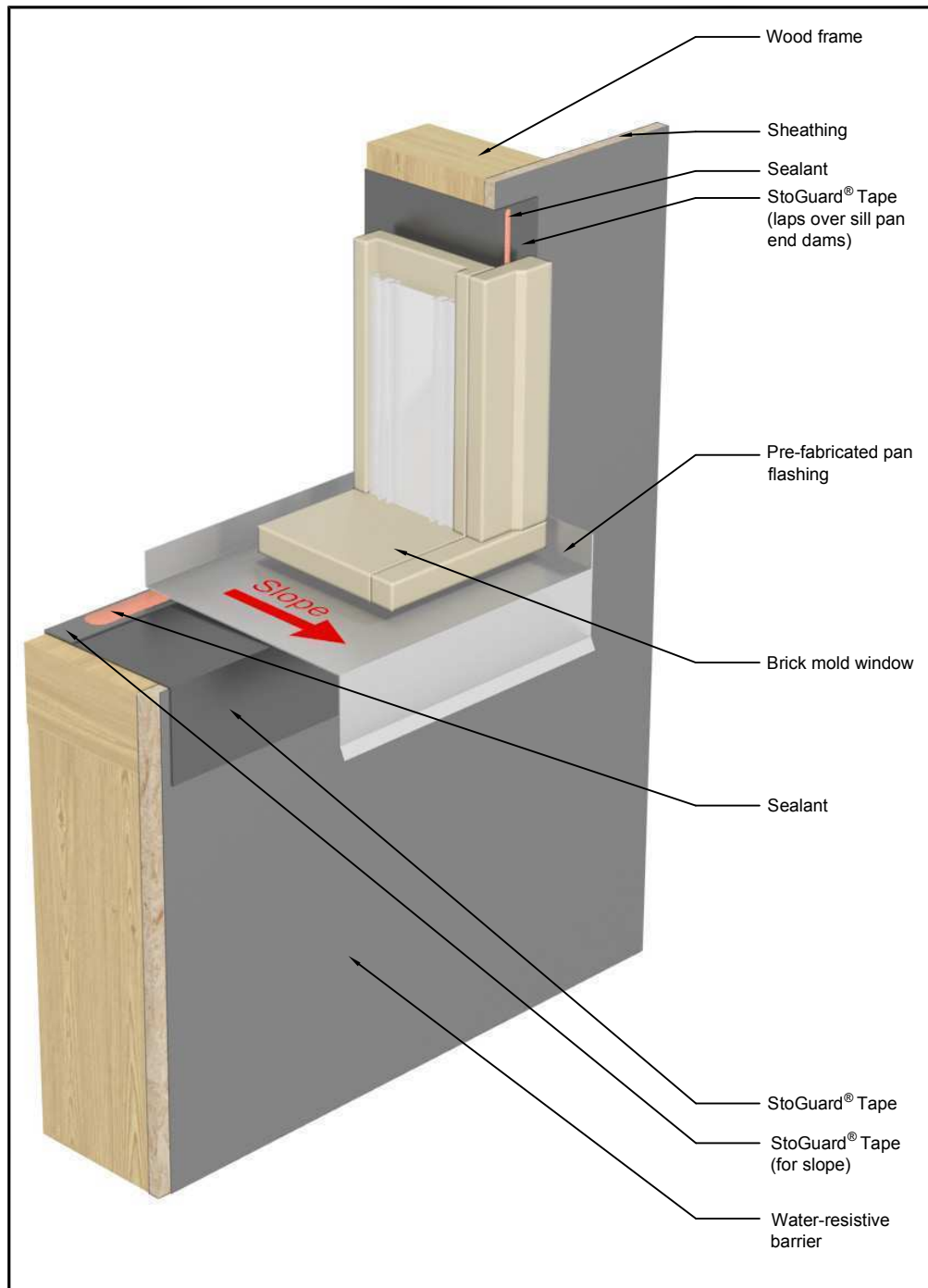
[www.stocorp.com](http://www.stocorp.com)

# StoPowerwall™ Insulated

## Brick Mold Window Sill/Jamb: Rough Opening

### Protection and Pan Flashing with Window Installed

Date: July 2009

**Notes:**

- 1) Provide gap between window frame and protected opening for continuous perimeter interior air seal.
- 2) Consult with window and sealant manufacturers to verify installation detailing.
- 3) Refer to Sto Detail 3.20 for rough opening protection, Sto Detail 3.26a1 for pan flashing and Sto Detail 3.26a3 for complete assembly. Refer to Sto Details 3.24a1 and 3.24a2 for detailing at head/jamb.
- 4) Test the final assembly using materials and sub-trades associated with the project to verify performance.

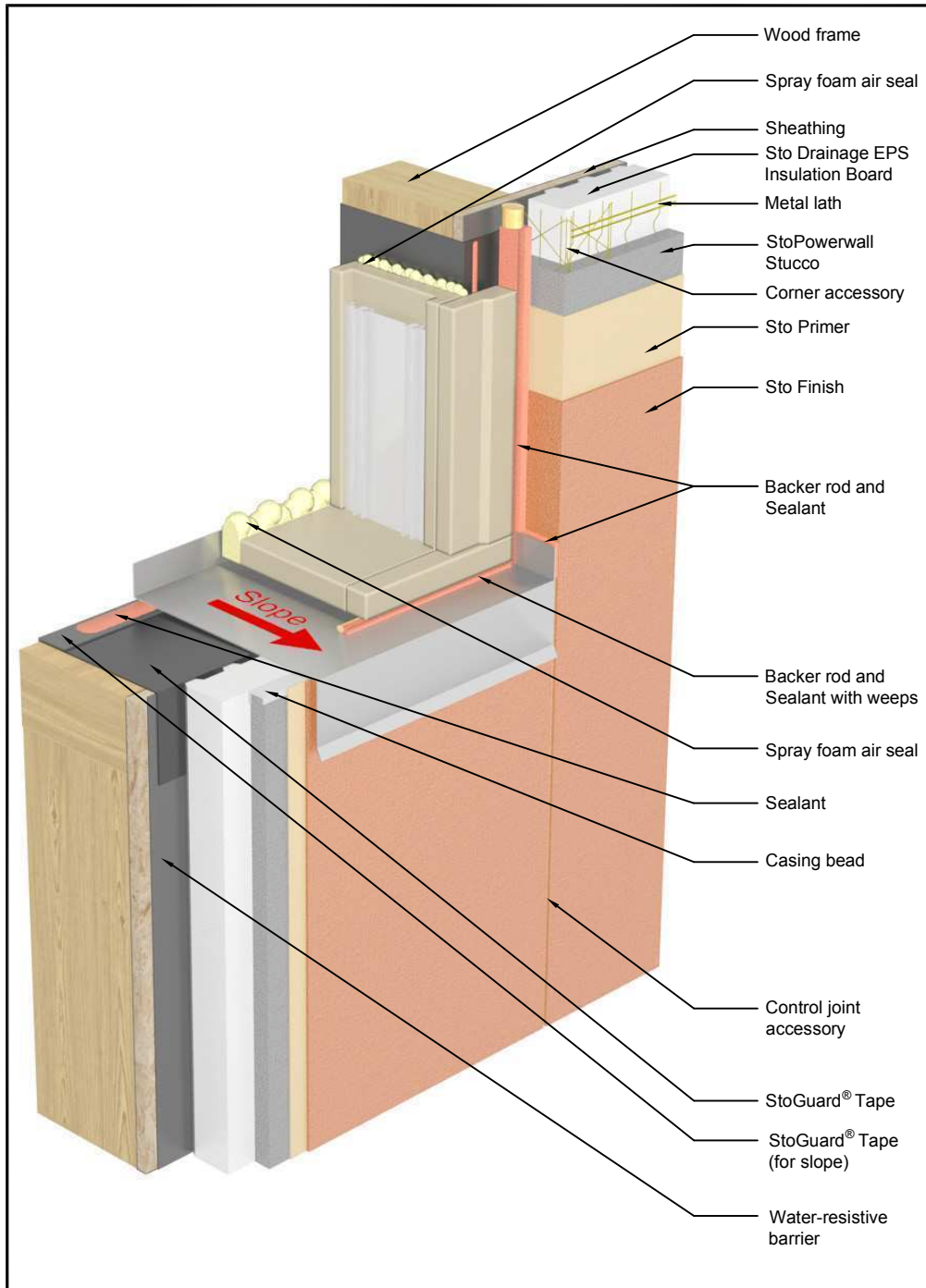
**ATTENTION**

Sto products are intended for use by qualified professional contractors, not consumers, as a component of a larger construction assembly as specified by a qualified design professional, general contractor or builder. They should be installed in accordance with those specifications and Sto's instructions. Sto Corp. disclaims all, and assumes no, liability for on-site inspections, for its product applied improperly, or by unqualified persons or entities, or as part of an improperly designed or constructed building, for the nonperformance of adjacent building components or assemblies, or for other construction activities beyond Sto's control. Improper use of Sto products or use as part of an improperly designed or constructed larger assembly or building may result in serious damage to Sto products, and to the structure of the building or its components. STO CORP. DISCLAIMS ALL WARRANTIES EXPRESS OR IMPLIED EXCEPT FOR EXPLICIT LIMITED WRITTEN WARRANTIES ISSUED TO AND ACCEPTED BY BUILDING OWNERS IN ACCORDANCE WITH STO'S WARRANTY PROGRAMS WHICH ARE SUBJECT TO CHANGE FROM TIME TO TIME. For the fullest, most current information on proper application, clean-up, mixing and other specifications and warranties, cautions and disclaimers, please refer to the Sto Corp. website, [www.stocorp.com](http://www.stocorp.com)

# StoPowerwall™ Insulated Brick Mold Window Sill/Jamb: Window Installed with Stucco Return and Perimeter Seals

Detail No: 3.26a3

Date: July 2009



### Notes:

- 1) Provide continuous perimeter exterior weather seal.
- 2) Provide continuous perimeter interior air seal.
- 3) Consult with window and sealant manufacturer to verify installation detailing.
- 4) Refer to Sto Detail 3.20 for rough opening protection, Sto Detail 3.26a1 for pan flashing and Sto Detail 3.26a2 for window installation. Refer to Sto Details 3.24a1 and 3.24a2 for detailing at head/jamb.
- 5) Test the final assembly using materials and sub-trades associated with the project to verify performance.

### ATTENTION

Sto products are intended for use by qualified professional contractors, not consumers, as a component of a larger construction assembly as specified by a qualified design professional, general contractor or builder. They should be installed in accordance with those specifications and Sto's instructions. Sto Corp. disclaims all, and assumes no, liability for on-site inspections, for its product applied improperly, or by unqualified persons or entities, or as part of an improperly designed or constructed building, for the nonperformance of adjacent building components or assemblies, or for other construction activities beyond Sto's control. Improper use of Sto products or use as part of an improperly designed or constructed larger assembly or building may result in serious damage to Sto products, and to the structure of the building or its components. STO CORP. DISCLAIMS ALL WARRANTIES EXPRESS OR IMPLIED EXCEPT FOR EXPLICIT LIMITED WRITTEN WARRANTIES ISSUED TO AND ACCEPTED BY BUILDING OWNERS IN ACCORDANCE WITH STO'S WARRANTY PROGRAMS WHICH ARE SUBJECT TO CHANGE FROM TIME TO TIME. For the fullest, most current information on proper application, clean-up, mixing and other specifications and warranties, cautions and disclaimers, please refer to the Sto Corp. website, [www.stocorp.com](http://www.stocorp.com)

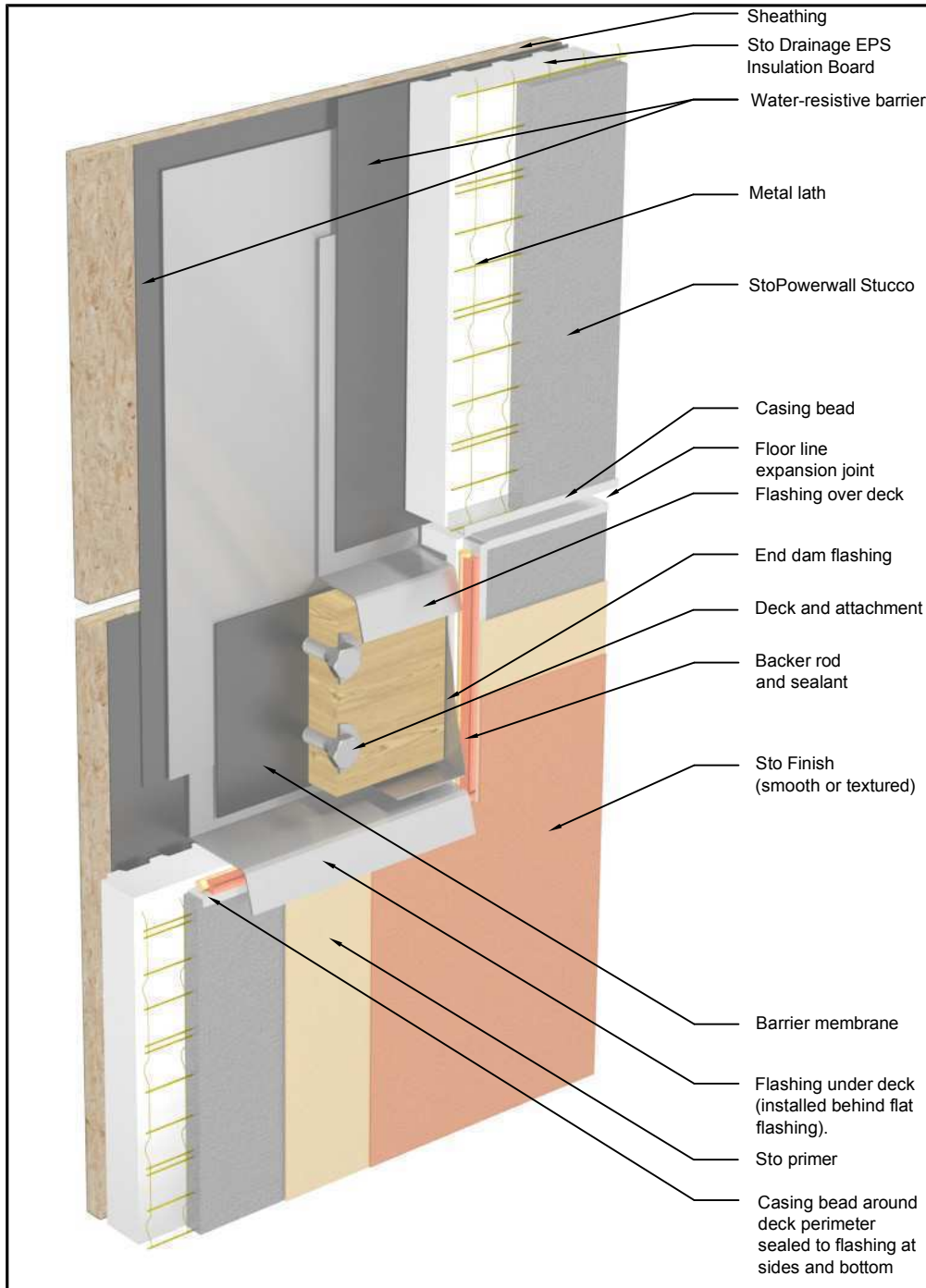
[www.stocorp.com](http://www.stocorp.com)



# StoPowerwall™ Insulated Termination at Deck

Detail No: 3.32

Date: July 2009



## Notes:

- 1) StoPowerwall Insulated components:
  - Sto Drainage EPS Insulation Board, minimum 1-1/2 inches (38mm) thick, maximum 2 inches (51mm) thick.
  - StoPowerwall Stucco-minimum 5/8 inches (16mm) thick.
  - Sto primer
  - Sto finish
- 2) Provide Sto Drainage EPS Insulation Board with tongue and groove horizontal joints and 1.5 pcf (24 kg/m<sup>3</sup>) density in conformance with ASTM C 578 (latest version), Type II requirements. Board must be recognized in a current ICC-ES evaluation report. Refer to Sto ICC-ESR 2323 for detailed information and Sto Specifications S503.
- 3) Provide code compliant water-resistive barrier: two layers Grade D kraft building paper or one layer 60 minute Grade D kraft building paper.
- 4) Provide 3/8 inch (10 mm) backer rod and sealant joint entire perimeter of deck between flashing and stucco casing bead termination.
- 5) Exercise care to ensure deck attachment does not leak into wall assembly.
- 6) Terminate stucco minimum 2 inches (51 mm) above deck.

## ATTENTION

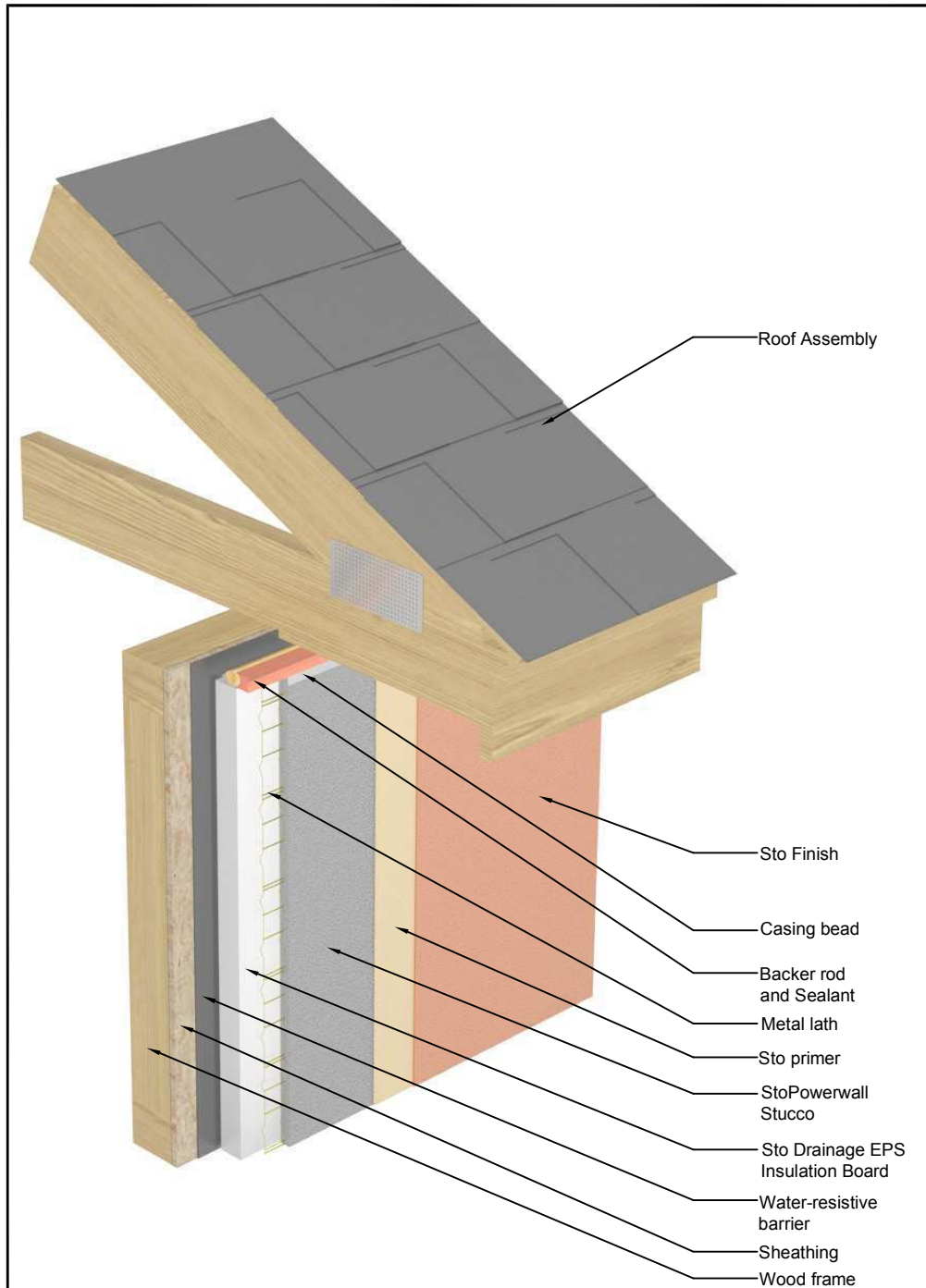
Sto products are intended for use by qualified professional contractors, not consumers, as a component of a larger construction assembly as specified by a qualified design professional, general contractor or builder. They should be installed in accordance with those specifications and Sto's instructions. Sto Corp. disclaims all, and assumes no, liability for on-site inspections, for its product applied improperly, or by unqualified persons or entities, or as part of an improperly designed or constructed building, for the nonperformance of adjacent building components or assemblies, or for other construction activities beyond Sto's control. Improper use of Sto products or use as part of an improperly designed or constructed larger assembly or building may result in serious damage to Sto products, and to the structure of the building or its components. STO CORP. DISCLAIMS ALL WARRANTIES EXPRESS OR IMPLIED EXCEPT FOR EXPLICIT LIMITED WRITTEN WARRANTIES ISSUED TO AND ACCEPTED BY BUILDING OWNERS IN ACCORDANCE WITH STO'S WARRANTY PROGRAMS WHICH ARE SUBJECT TO CHANGE FROM TIME TO TIME. For the fullest, most current information on proper application, clean-up, mixing and other specifications and warranties, cautions and disclaimers, please refer to the Sto Corp. website, [www.stocorp.com](http://www.stocorp.com)

[www.stocorp.com](http://www.stocorp.com)

# StoPowerwall™ Insulated Termination at Eave / Soffit

Detail No: 3.40

Date: July 2009



## Notes:

- 1) StoPowerwall Insulated components:
  - Sto Drainage EPS Insulation Board, minimum 1-1/2 inches (38mm) thick, maximum 2 inches (51mm) thick.
  - StoPowerwall Stucco—minimum 5/8 inches (16mm) thick.
  - Sto primer
  - Sto finish
- 2) Provide Sto Drainage EPS Insulation Board with tongue and groove horizontal joints and 1.5 pcf (24 kg/m<sup>3</sup>) density in conformance with ASTM C 578 (latest version), Type II requirements. Board must be recognized in a current ICC-ES evaluation report. Refer to Sto ICC-ESR 2323 for detailed information and Sto Specifications S503.
- 3) Provide code compliant water-resistive barrier: two layers Grade D kraft building paper or one layer 60 minute Grade D kraft building paper.
- 4) Install soffit board prior to StoPowerwall Insulated installation to provide bearing surface for sealant and backer rod.

## ATTENTION

Sto products are intended for use by qualified professional contractors, not consumers, as a component of a larger construction assembly as specified by a qualified design professional, general contractor or builder. They should be installed in accordance with those specifications and Sto's instructions. Sto Corp. disclaims all, and assumes no, liability for on-site inspections, for its product applied improperly, or by unqualified persons or entities, or as part of an improperly designed or constructed building, for the nonperformance of adjacent building components or assemblies, or for other construction activities beyond Sto's control. Improper use of Sto products or use as part of an improperly designed or constructed larger assembly or building may result in serious damage to Sto products, and to the structure of the building or its components. STO CORP. DISCLAIMS ALL WARRANTIES EXPRESS OR IMPLIED EXCEPT FOR EXPLICIT LIMITED WRITTEN WARRANTIES ISSUED TO AND ACCEPTED BY BUILDING OWNERS IN ACCORDANCE WITH STO'S WARRANTY PROGRAMS WHICH ARE SUBJECT TO CHANGE FROM TIME TO TIME. For the fullest, most current information on proper application, clean-up, mixing and other specifications and warranties, cautions and disclaimers, please refer to the Sto Corp. website, [www.stocorp.com](http://www.stocorp.com)

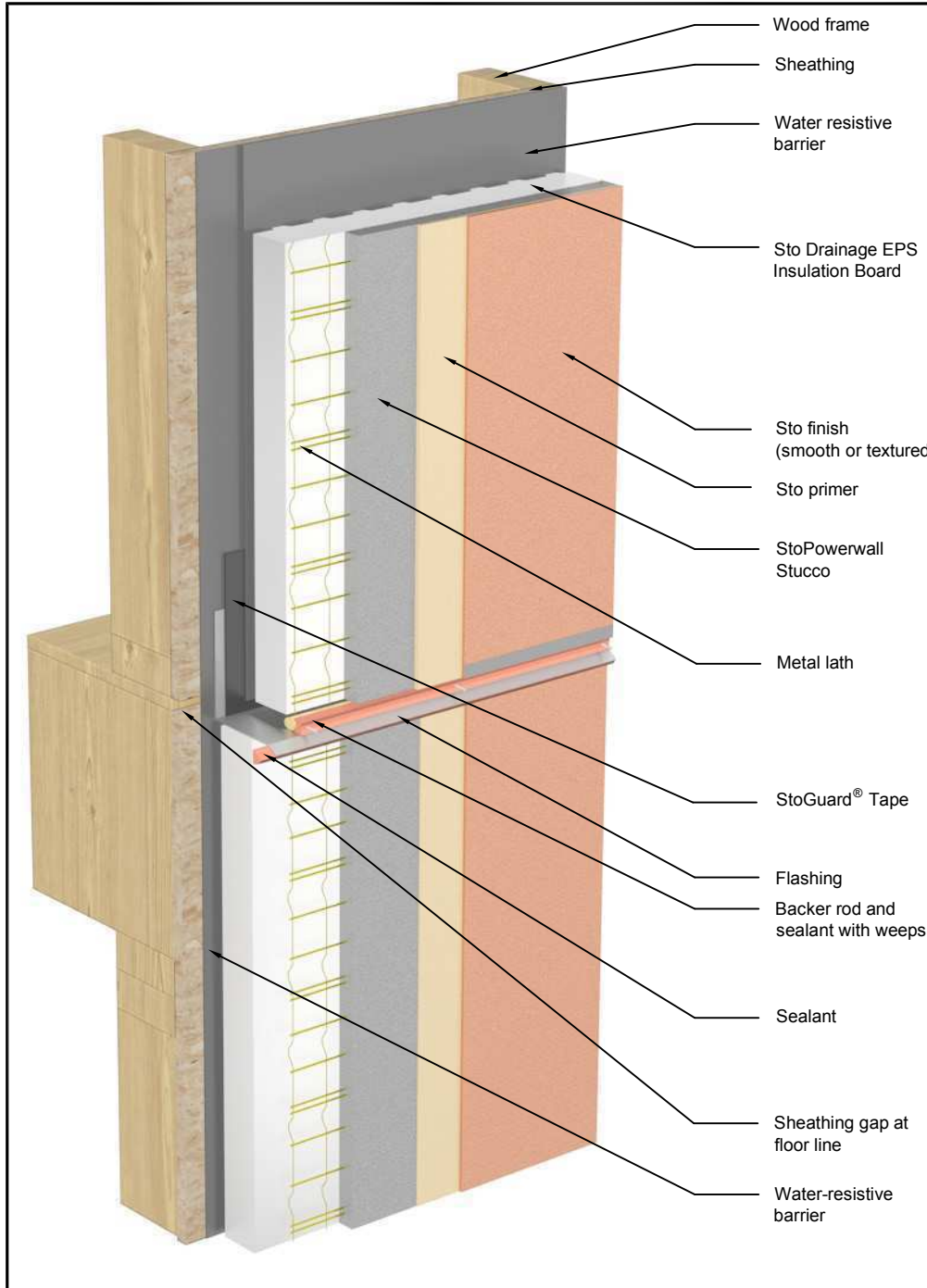
[www.stocorp.com](http://www.stocorp.com)



# StoPowerwall™ Insulated Floor Line with Joint

Detail No: 3.41

Date: July 2009



## Notes:

- 1) StoPowerwall Insulated components:
  - Sto Drainage EPS Insulation Board, minimum 1-1/2 inches (38mm) thick, maximum 2 inches (51mm) thick.
  - StoPowerwall Stucco - minimum 5/8 (16mm) thick
  - Sto primer
  - Sto finish
- 2) Provide Sto Drainage EPS Insulation Board with tongue and groove horizontal joints and 1.5 pcf (24 kg/m<sup>3</sup>) density in conformance with ASTM C 578 (latest version), Type II requirements. Board must be recognized in a current ICC-ES evaluation report. Refer to Sto ICC-ESR 2323 for detailed information and Sto Specifications S503.
- 3) Provide code compliant water-resistive barrier: two layers Grade D kraft building paper or one layer 60 minute Grade D kraft building paper.

## ATTENTION

Sto products are intended for use by qualified professional contractors, not consumers, as a component of a larger construction assembly as specified by a qualified design professional, general contractor or builder. They should be installed in accordance with those specifications and Sto's instructions. Sto Corp. disclaims all, and assumes no, liability for on-site inspections, for its product applied improperly, or by unqualified persons or entities, or as part of an improperly designed or constructed building, for the nonperformance of adjacent building components or assemblies, or for other construction activities beyond Sto's control. Improper use of Sto products or use as part of an improperly designed or constructed larger assembly or building may result in serious damage to Sto products, and to the structure of the building or its components. STO CORP. DISCLAIMS ALL WARRANTIES EXPRESS OR IMPLIED EXCEPT FOR EXPLICIT LIMITED WRITTEN WARRANTIES ISSUED TO AND ACCEPTED BY BUILDING OWNERS IN ACCORDANCE WITH STO'S WARRANTY PROGRAMS WHICH ARE SUBJECT TO CHANGE FROM TIME TO TIME. For the fullest, most current information on proper application, clean-up, mixing and other specifications and warranties, cautions and disclaimers, please refer to the Sto Corp. website, [www.stocorp.com](http://www.stocorp.com)

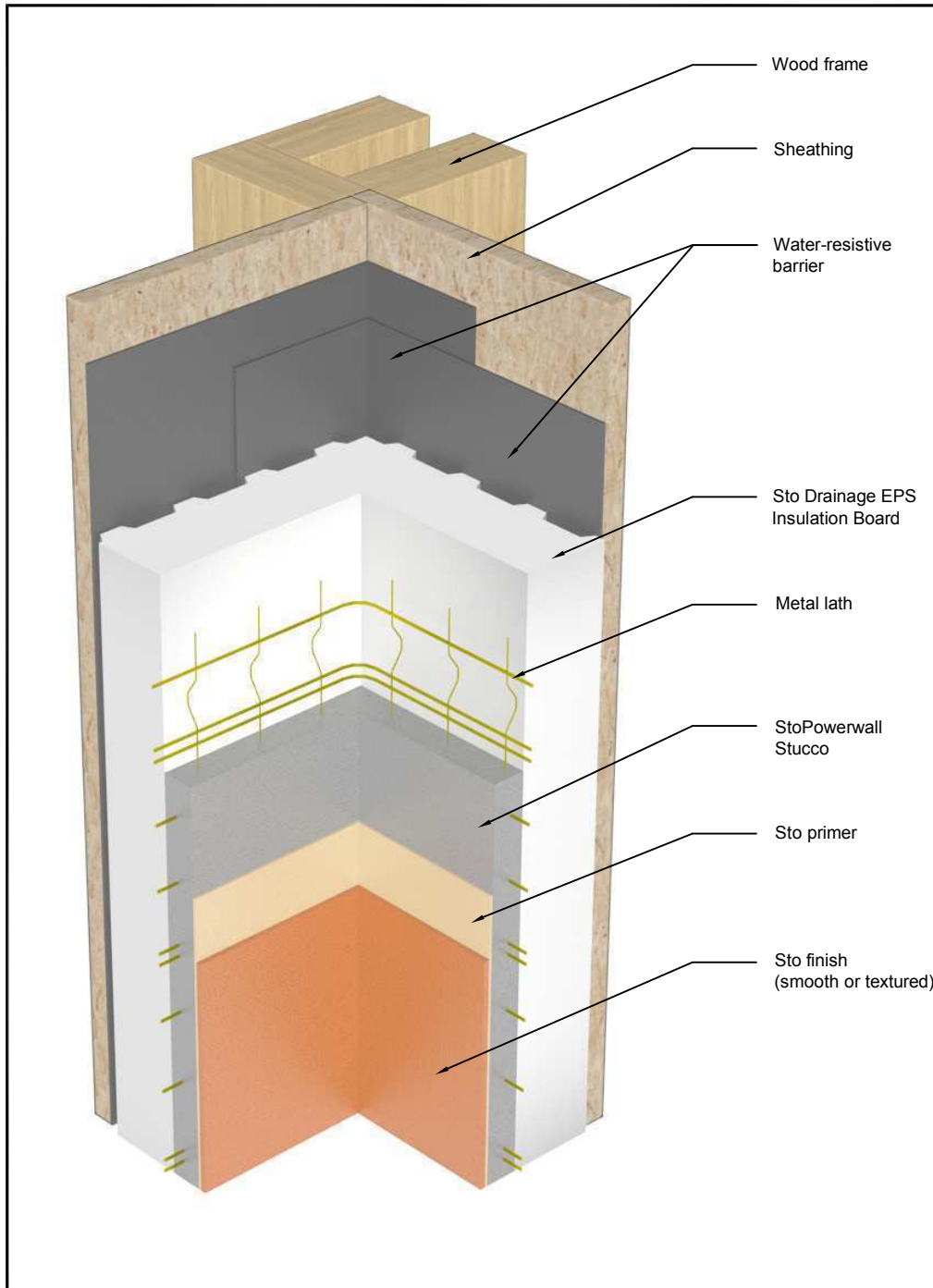
[www.stocorp.com](http://www.stocorp.com)



# StoPowerwall™ Insulated Inside Corner

Detail No: 3.53

Date: July 2009



## hNotes:

- 1) StoPowerwall Insulated components:
  - Sto Drainage EPS Insulation Board, minimum 1-1/2 inches (38mm) thick, maximum 2 inches (51mm) thick.
  - StoPowerwall Stucco - minimum 5/8 (16mm) thick
  - Sto primer
  - Sto finish
- 2) Provide Sto Drainage EPS Insulation Board with tongue and groove horizontal joints and 1.5 pcf (24 kg/m<sup>3</sup>) density in conformance with ASTM C 578 (latest version), Type II requirements. Board must be recognized in a current ICC-ES evaluation report. Refer to Sto ICC-ESR 2323 for detailed information and Sto Specifications S503.
- 3) Provide code compliant water resistive barrier: two layers Grade D kraft building paper or one layer 60 minute Grade D kraft building paper.
- 4) Wrap water resistive barrier minimum 8" (200 mm) around inside corner.
- 5) Bend lath at inside corner and extend past corner minimum 24" (610mm) in both directions or use corner lath over abutted metal lath. Fasten securely at the corner.

## ATTENTION

Sto products are intended for use by qualified professional contractors, not consumers, as a component of a larger construction assembly as specified by a qualified design professional, general contractor or builder. They should be installed in accordance with those specifications and Sto's instructions. Sto Corp. disclaims all, and assumes no, liability for on-site inspections, for its product applied improperly, or by unqualified persons or entities, or as part of an improperly designed or constructed building, for the nonperformance of adjacent building components or assemblies, or for other construction activities beyond Sto's control. Improper use of Sto products or use as part of an improperly designed or constructed larger assembly or building may result in serious damage to Sto products, and to the structure of the building or its components. STO CORP. DISCLAIMS ALL WARRANTIES EXPRESS OR IMPLIED EXCEPT FOR EXPLICIT LIMITED WRITTEN WARRANTIES ISSUED TO AND ACCEPTED BY BUILDING OWNERS IN ACCORDANCE WITH STO'S WARRANTY PROGRAMS WHICH ARE SUBJECT TO CHANGE FROM TIME TO TIME. For the fullest, most current information on proper application, clean-up, mixing and other specifications and warranties, cautions and disclaimers, please refer to the Sto Corp. website, [www.stocorp.com](http://www.stocorp.com)

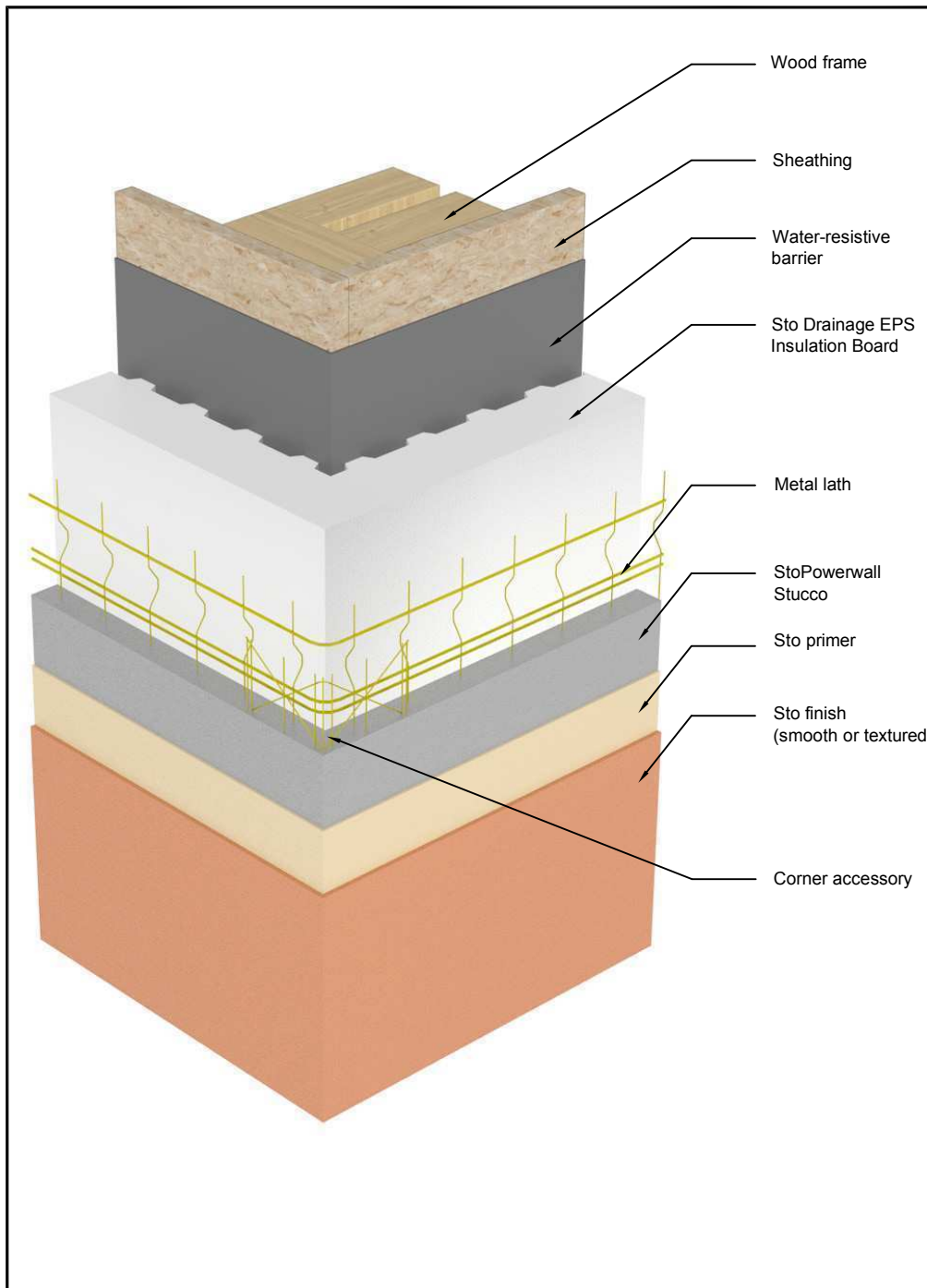
[www.stocorp.com](http://www.stocorp.com)



Detail No: 3.54

Date: July 2009

# StoPowerwall™ Insulated Outside Corner



## Notes:

- 1) StoPowerwall Insulated components:
  - Sto Drainage EPS Insulation Board, minimum 1-1/2 inches (38mm) thick, maximum 2 inches (51mm) thick.
  - StoPowerwall Stucco - minimum 5/8 (16mm) thick
  - Sto primer
  - Sto finish
- 2) Provide Sto Drainage EPS Insulation Board with tongue and groove horizontal joints and 1.5 pcf (24 kg/m<sup>3</sup>) density in conformance with ASTM C 578 (latest version), Type II requirements. Board must be recognized in a current ICC-ES evaluation report. Refer to Sto ICC-ESR 2323 for detailed information and Sto Specifications S503.
- 3) Provide code compliant water-resistive barrier: two layers Grade D kraft building paper or one layer 60 minute Grade D kraft building paper.
- 4) Install water-resistive barrier continuous around corner without break for a minimum 12" (300 mm).
- 5) Install metal lath continuous around corner without break for a minimum 24" (610 mm).
- 6) Attach corner accessory over lath.

## ATTENTION

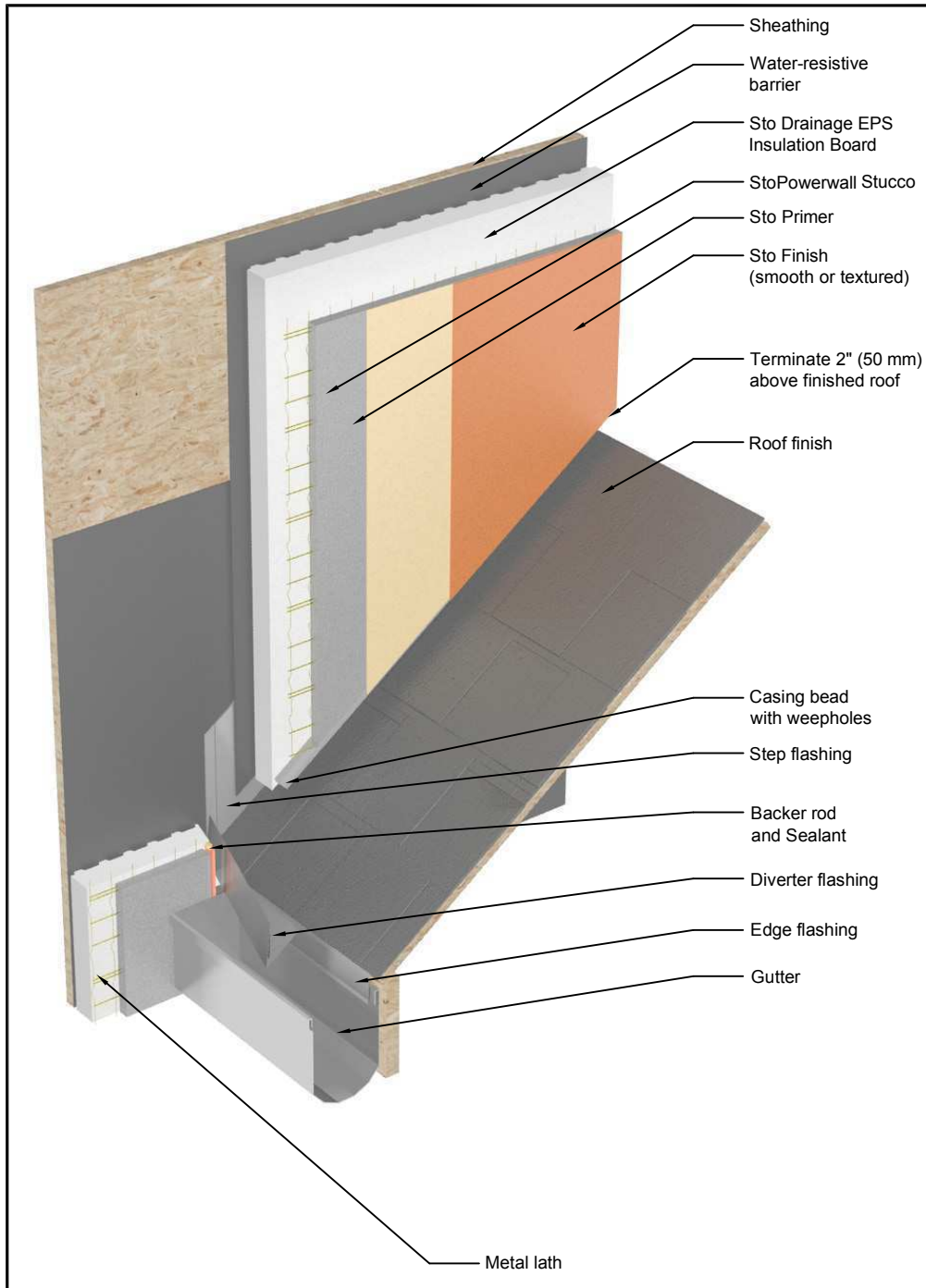
Sto products are intended for use by qualified professional contractors, not consumers, as a component of a larger construction assembly as specified by a qualified design professional, general contractor or builder. They should be installed in accordance with those specifications and Sto's instructions. Sto Corp. disclaims all, and assumes no, liability for on-site inspections, for its product applied improperly, or by unqualified persons or entities, or as part of an improperly designed or constructed building, for the nonperformance of adjacent building components or assemblies, or for other construction activities beyond Sto's control. Improper use of Sto products or use as part of an improperly designed or constructed larger assembly or building may result in serious damage to Sto products, and to the structure of the building or its components. STO CORP. DISCLAIMS ALL WARRANTIES EXPRESS OR IMPLIED EXCEPT FOR EXPLICIT LIMITED WRITTEN WARRANTIES ISSUED TO AND ACCEPTED BY BUILDING OWNERS IN ACCORDANCE WITH STO'S WARRANTY PROGRAMS WHICH ARE SUBJECT TO CHANGE FROM TIME TO TIME. For the fullest, most current information on proper application, clean-up, mixing and other specifications and warranties, cautions and disclaimers, please refer to the Sto Corp. website, [www.stocorp.com](http://www.stocorp.com)

[www.stocorp.com](http://www.stocorp.com)

# StoPowerwall™ Insulated Roof / Wall Diverter Flashing

Detail No: 3.62

Date: July 2009



## Notes:

- 1) StoPowerwall Insulated components:
  - Sto Drainage EPS Insulation Board, minimum 1-1/2 inches (38mm) thick, maximum 2 inches (51mm) thick.
  - Sto Powerwall Stucco - minimum 5/8 (16mm) thick
  - Sto primer
  - Sto finish
- 2) Provide Sto Drainage EPS Insulation Board with tongue and groove horizontal joints and 1.5 pcf (24 kg/m<sup>3</sup>) density in conformance with ASTM C 578 (latest version), Type II requirements. Board must be recognized in a current ICC-ES evaluation report. Refer to Sto ICC-ESR 2323 for detailed information and Sto Specifications S503.
- 3) Provide code compliant water-resistive barrier: two layers Grade D kraft building paper or one layer 60 minute Grade D kraft building paper.
- 4) Provide step flashing minimum 4" (100 mm) extending up the wall.
- 5) Provide stucco overlap of the step flashing 2" (50 mm) and terminate stucco minimum 2" (50 mm) above the finished roof. The space permits re-roofing at a future date and helps prevent debris from accumulating between roof and stucco.
- 6) Terminate the step flashing with a watertight diverter (kick-out) flashing to direct water into the gutter. Refer to Sto Detail 2.62b on fabrication of a diverter flashing.
- 7) Provide 3/8" (10 mm) joint around the diverter flashing and seal.

## ATTENTION

Sto products are intended for use by qualified professional contractors, not consumers, as a component of a larger construction assembly as specified by a qualified design professional, general contractor or builder. They should be installed in accordance with those specifications and Sto's instructions. Sto Corp. disclaims all, and assumes no, liability for on-site inspections, for its product applied improperly, or by unqualified persons or entities, or as part of an improperly designed or constructed building, for the nonperformance of adjacent building components or assemblies, or for other construction activities beyond Sto's control. Improper use of Sto products or use as part of an improperly designed or constructed larger assembly or building may result in serious damage to Sto products, and to the structure of the building or its components. STO CORP. DISCLAIMS ALL WARRANTIES EXPRESS OR IMPLIED EXCEPT FOR EXPLICIT LIMITED WRITTEN WARRANTIES ISSUED TO AND ACCEPTED BY BUILDING OWNERS IN ACCORDANCE WITH STO'S WARRANTY PROGRAMS WHICH ARE SUBJECT TO CHANGE FROM TIME TO TIME. For the fullest, most current information on proper application, clean-up, mixing and other specifications and warranties, cautions and disclaimers, please refer to the Sto Corp. website, [www.stocorp.com](http://www.stocorp.com)

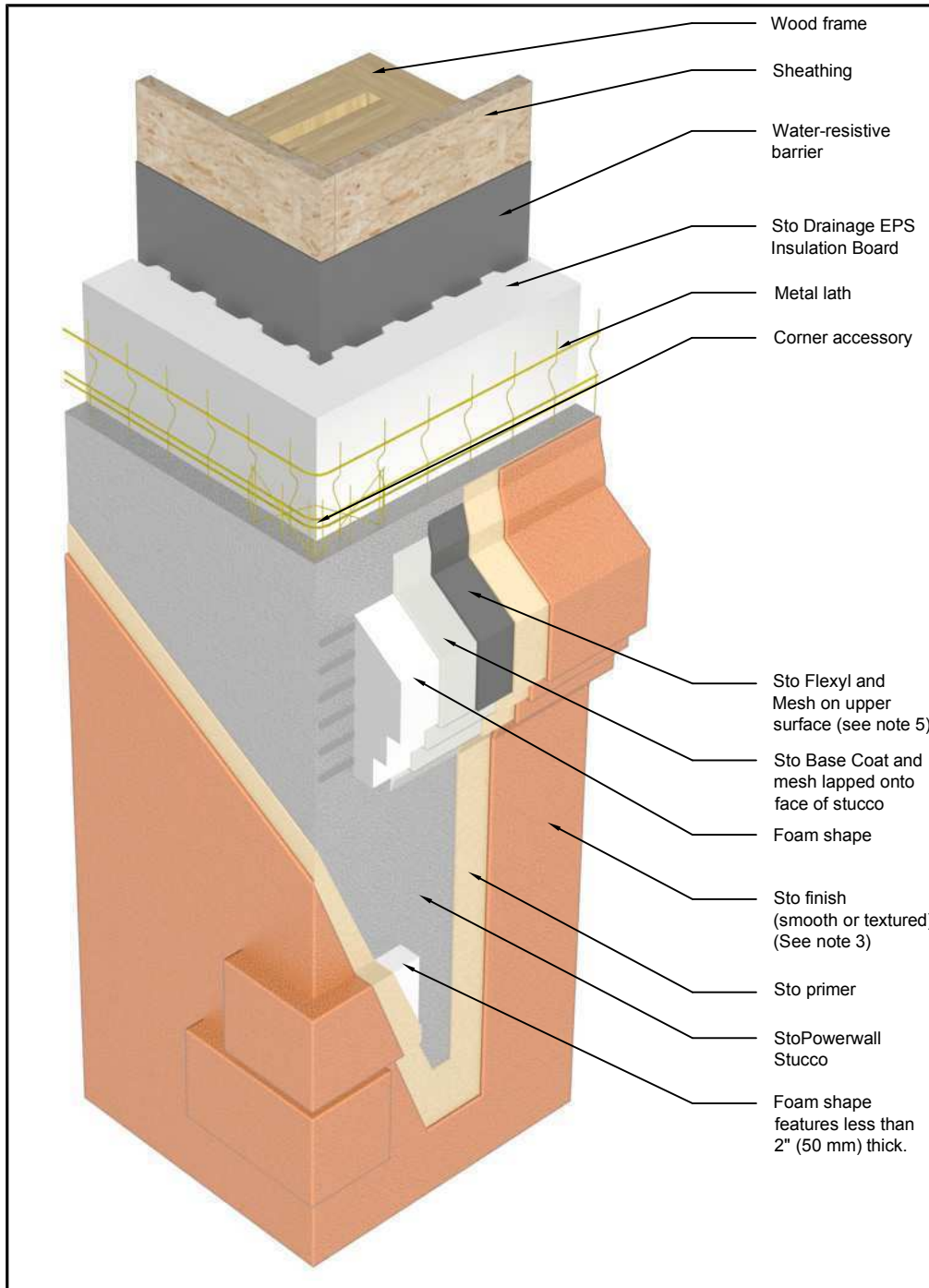
[www.stocorp.com](http://www.stocorp.com)



# StoPowerwall™ Insulated Foam Shape Build-Outs

Detail No: 3.70

Date: July 2009



## Notes:

- 1) StoPowerwall Insulated components:
  - Sto Drainage EPS Insulation Board, minimum 1-1/2 inches (38mm) thick, maximum 2 inches (51mm) thick.
  - StoPowerwall Stucco-minimum 5/8 (16mm) thick
  - Sto primer
  - Sto finish
- 2) Provide Sto Drainage EPS Insulation Board with tongue and groove horizontal joints and 1.5 pcf (24 kg/m<sup>3</sup>) density in conformance with ASTM C 578 (latest version), Type II requirements. Board must be recognized in a current ICC-ES evaluation report. Refer to Sto ICC-ESR 2323 for detailed information and Sto Specifications S503.
- 3) Provide code compliant water-resistive barrier: two layers Grade D kraft building paper or one layer 60 minute Grade D kraft building paper.
- 4) The exposed surface must have a minimum slope of 1:2 (27%). In locations where ice and snow may accumulate, increase slope.
- 5) Provide Sto Flexyl and Mesh on upper surface of foam shape features projecting more than 2" (50 mm) from the surface.
- 6) Limit foam shape projection to no more than 12" (305 mm) and limit to small easily maintained areas, as projecting surfaces are prone to requiring extra maintenance and care. Top coat sloped surface and / or entire feature with StoCoat Acryl. Plus to reduce maintenance burden.

## ATTENTION

Sto products are intended for use by qualified professional contractors, not consumers, as a component of a larger construction assembly as specified by a qualified design professional, general contractor or builder. They should be installed in accordance with those specifications and Sto's instructions. Sto Corp. disclaims all, and assumes no, liability for on-site inspections, for its product applied improperly, or by unqualified persons or entities, or as part of an improperly designed or constructed building, for the nonperformance of adjacent building components or assemblies, or for other construction activities beyond Sto's control. Improper use of Sto products or use as part of an improperly designed or constructed larger assembly or building may result in serious damage to Sto products, and to the structure of the building or its components. STO CORP. DISCLAIMS ALL WARRANTIES EXPRESS OR IMPLIED EXCEPT FOR EXPLICIT LIMITED WRITTEN WARRANTIES ISSUED TO AND ACCEPTED BY BUILDING OWNERS IN ACCORDANCE WITH STO'S WARRANTY PROGRAMS WHICH ARE SUBJECT TO CHANGE FROM TIME TO TIME. For the fullest, most current information on proper application, clean-up, mixing and other specifications and warranties, cautions and disclaimers, please refer to the Sto Corp. website, [www.stocorp.com](http://www.stocorp.com)

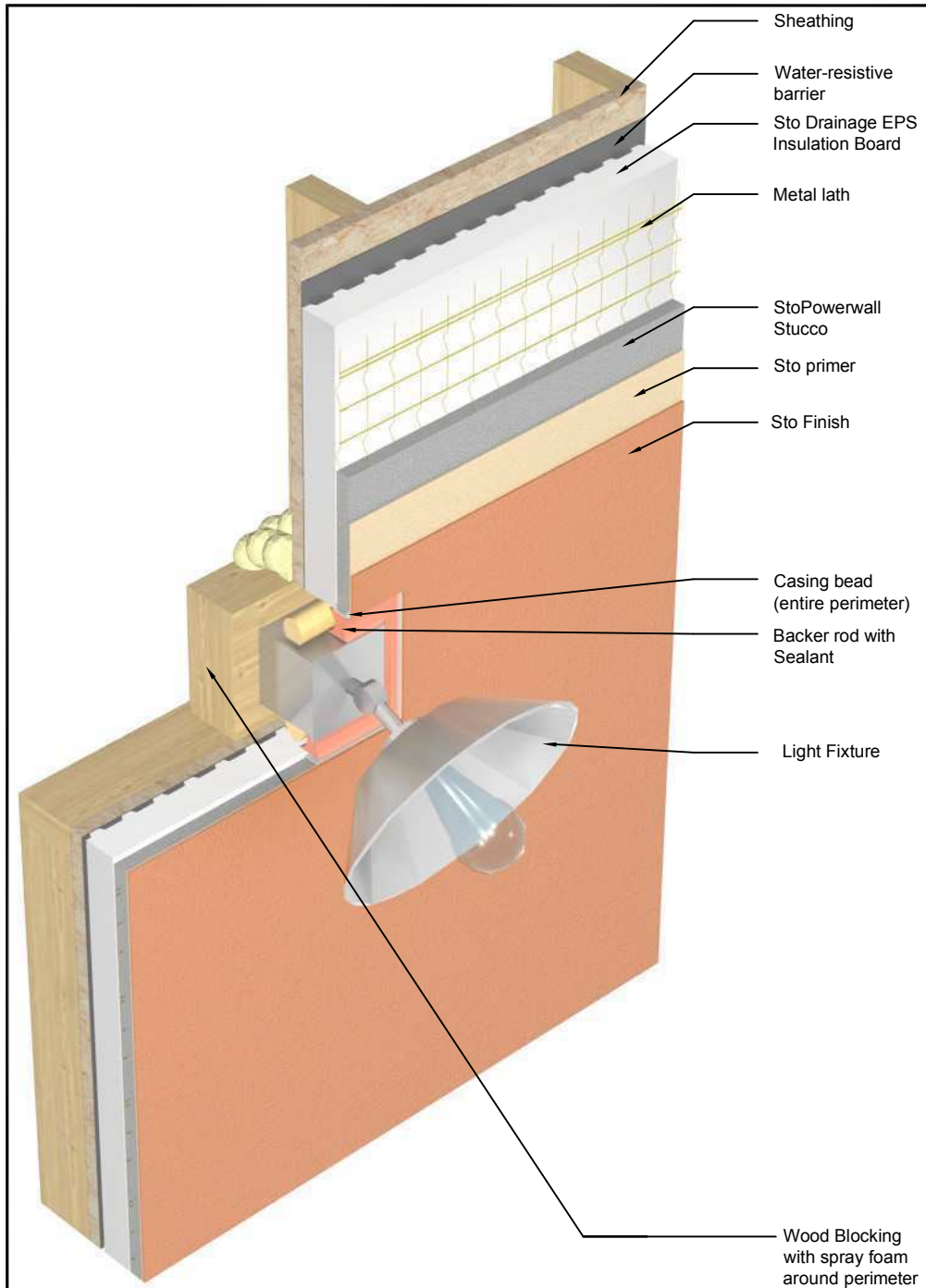
[www.stocorp.com](http://www.stocorp.com)



# StoPowerwall™ Insulated Termination at Fixture Penetration through Stucco

Detail No: 3.73

Date: July 2009



## Notes:

- 1) StoPowerwall Insulated components:
  - Sto Drainage EPS Insulation Board, minimum 1-1/2 inches (38mm) thick, maximum 2 inches (51mm) thick.
  - StoPowerwall Stucco—minimum 5/8 inches (16mm) thick.
  - Sto primer
  - Sto finish
- 2) Provide Sto Drainage EPS Insulation Board with tongue and groove horizontal joints and 1.5 pcf (24 kg/m<sup>3</sup>) density in conformance with ASTM C 578 (latest version), Type II requirements. Board must be recognized in a current ICC-ES evaluation report. Refer to Sto ICC-ESR 2323 for detailed information and Sto Specifications S503.
- 3) Provide code compliant water-resistive barrier: two layers Grade D kraft building paper or one layer 60 minute Grade D kraft building paper.

## ATTENTION

Sto products are intended for use by qualified professional contractors, not consumers, as a component of a larger construction assembly as specified by a qualified design professional, general contractor or builder. They should be installed in accordance with those specifications and Sto's instructions. Sto Corp. disclaims all, and assumes no, liability for on-site inspections, for its product applied improperly, or by unqualified persons or entities, or as part of an improperly designed or constructed building, for the nonperformance of adjacent building components or assemblies, or for other construction activities beyond Sto's control. Improper use of Sto products or use as part of an improperly designed or constructed larger assembly or building may result in serious damage to Sto products, and to the structure of the building or its components. STO CORP. DISCLAIMS ALL WARRANTIES EXPRESS OR IMPLIED EXCEPT FOR EXPLICIT LIMITED WRITTEN WARRANTIES ISSUED TO AND ACCEPTED BY BUILDING OWNERS IN ACCORDANCE WITH STO'S WARRANTY PROGRAMS WHICH ARE SUBJECT TO CHANGE FROM TIME TO TIME. For the fullest, most current information on proper application, clean-up, mixing and other specifications and warranties, cautions and disclaimers, please refer to the Sto Corp. website, [www.stocorp.com](http://www.stocorp.com)

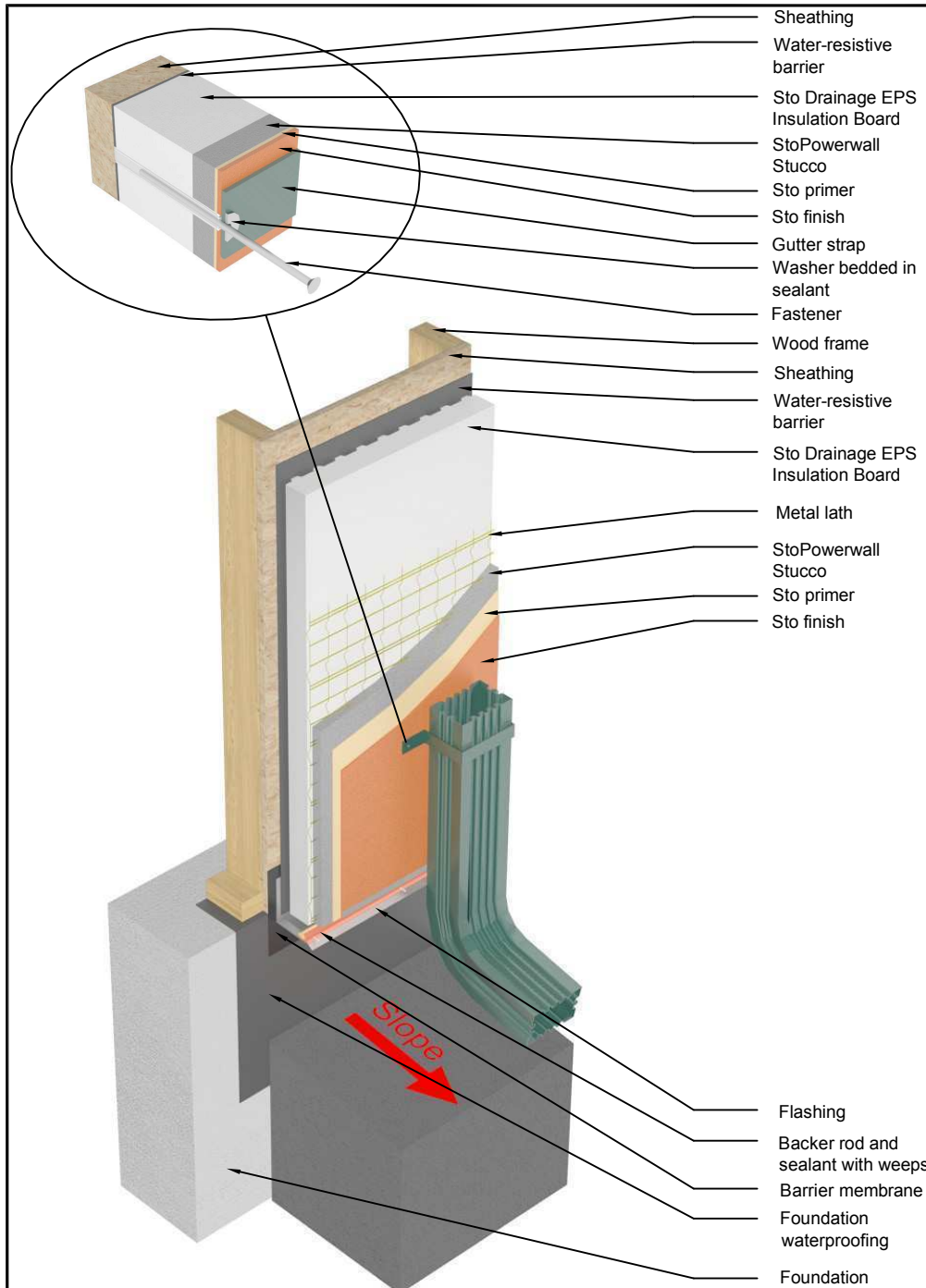
[www.stocorp.com](http://www.stocorp.com)



# StoPowerwall™ Insulated Surface Mount Fixture Attachment through Stucco

Detail No: 3.74

Date: July 2009



### Notes:

- 1) StoPowerwall Insulated components:
  - Sto Drainage EPS Insulation Board, minimum 1-1/2 inches (38mm) thick, maximum 2 inches (51mm) thick.
  - StoPowerwall Stucco-minimum 5/8 (16mm) thick
  - Sto primer
  - Sto finish
- 2) Provide Sto Drainage EPS Insulation Board with tongue and groove horizontal joints and 1.5 pcf (24 kg/m<sup>3</sup>) density in conformance with ASTM C 578 (latest version), Type II requirements. Board must be recognized in a current ICC-ES evaluation report. Refer to Sto ICC-ESR 2323 for detailed information and Sto Specifications S503.
- 3) Provide code compliant water-resistive barrier: two layers Grade D kraft building paper or one layer 60 minute Grade D kraft building paper.
- 4) Provide UV resistant barrier membrane at base of wall or protect with coating or other material to prevent UV degradation.
- 5) Provide backer rod and sealant with weeps at base of wall. Provide flashing with minimum 3-1/2" (89mm) back leg that terminates minimum 1 inch (25mm) below sill plate. Provide minimum 6 inches (152mm) clearance between flashing drip edge and grade. Increase distance above grade for snow regions.
- 6) Provide adequate slope of finished grade away from structure for drainage.
- 7) Provide dampproofing or waterproofing as needed below grade.

### ATTENTION

Sto products are intended for use by qualified professional contractors, not consumers, as a component of a larger construction assembly as specified by a qualified design professional, general contractor or builder. They should be installed in accordance with those specifications and Sto's instructions. Sto Corp. disclaims all, and assumes no, liability for on-site inspections, for its product applied improperly, or by unqualified persons or entities, or as part of an improperly designed or constructed building, for the nonperformance of adjacent building components or assemblies, or for other construction activities beyond Sto's control. Improper use of Sto products or use as part of an improperly designed or constructed larger assembly or building may result in serious damage to Sto products, and to the structure of the building or its components. STO CORP. DISCLAIMS ALL WARRANTIES EXPRESS OR IMPLIED EXCEPT FOR EXPLICIT LIMITED WRITTEN WARRANTIES ISSUED TO AND ACCEPTED BY BUILDING OWNERS IN ACCORDANCE WITH STO'S WARRANTY PROGRAMS WHICH ARE SUBJECT TO CHANGE FROM TIME TO TIME. For the fullest, most current information on proper application, clean-up, mixing and other specifications and warranties, cautions and disclaimers, please refer to the Sto Corp. website, [www.stocorp.com](http://www.stocorp.com)

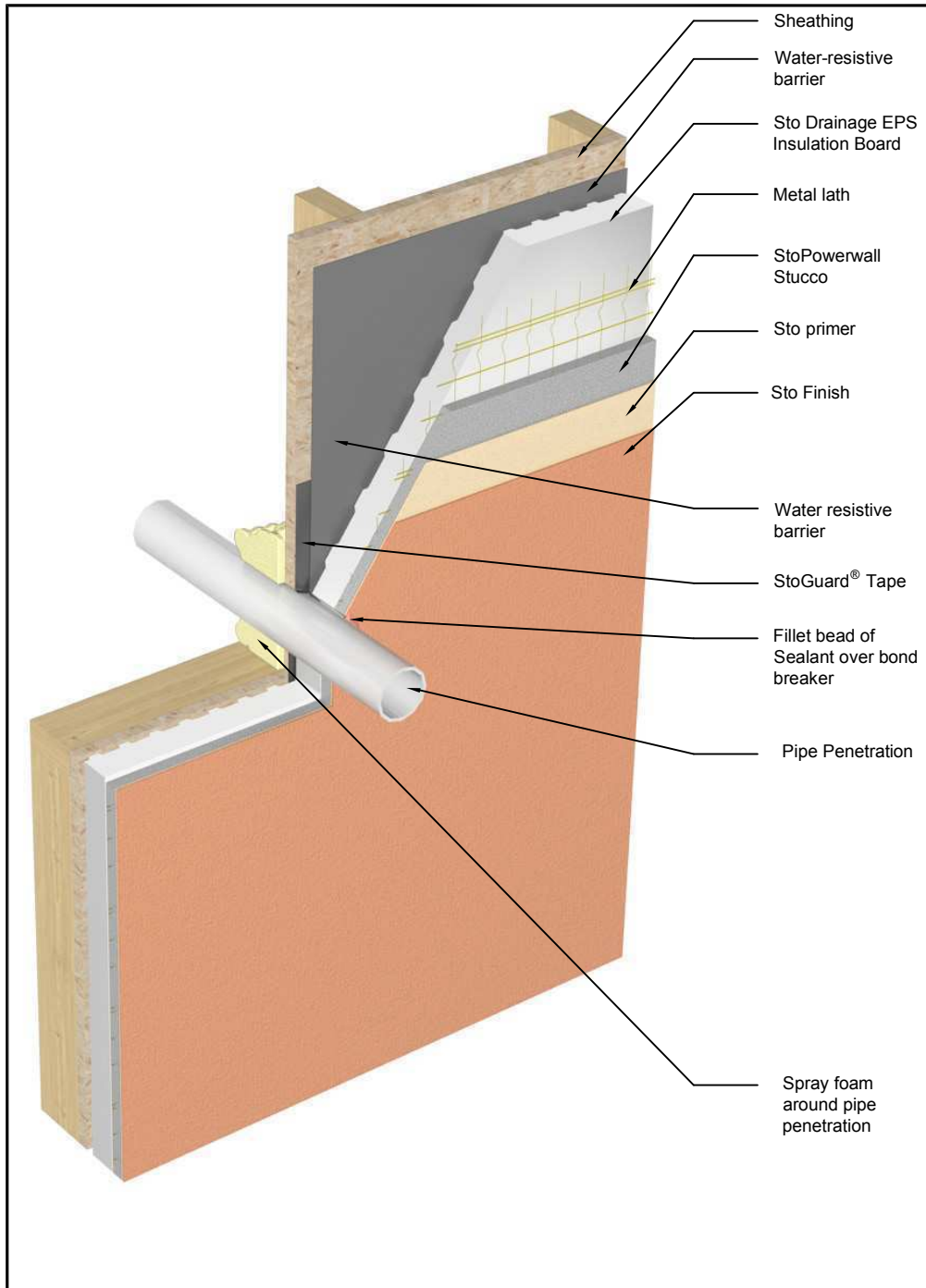
[www.stocorp.com](http://www.stocorp.com)



# StoPowerwall™ Insulated Termination at Pipe Penetration through Stucco

Detail No: 3.76

Date: July 2009



## Notes:

- 1) StoPowerwall Insulated components:
  - Sto Drainage EPS Insulation Board, minimum 1-1/2 inches (38mm) thick, maximum 2 inches (51mm) thick.
  - StoPowerwall Stucco - minimum 5/8 inches (16mm) thick.
  - Sto primer
  - Sto finish
- 2) Provide Sto Drainage EPS Insulation Board with tongue and groove horizontal joints and 1.5 pcf (24 kg/m<sup>3</sup>) density in conformance with ASTM C 578 (latest version), Type II requirements. Board must be recognized in a current ICC-ES evaluation report. Refer to Sto ICC-ESR 2323 for detailed information and Sto Specifications S503.
- 3) Provide code compliant water-resistive barrier: two layers Grade D kraft building paper or one layer 60 minute Grade D kraft building paper.
- 4) Provide fillet bead of sealant over bond breaker around perimeter of penetration. Consult with sealant manufacturer.

## ATTENTION

Sto products are intended for use by qualified professional contractors, not consumers, as a component of a larger construction assembly as specified by a qualified design professional, general contractor or builder. They should be installed in accordance with those specifications and Sto's instructions. Sto Corp. disclaims all, and assumes no, liability for on-site inspections, for its product applied improperly, or by unqualified persons or entities, or as part of an improperly designed or constructed building, for the nonperformance of adjacent building components or assemblies, or for other construction activities beyond Sto's control. Improper use of Sto products or use as part of an improperly designed or constructed larger assembly or building may result in serious damage to Sto products, and to the structure of the building or its components. STO CORP. DISCLAIMS ALL WARRANTIES EXPRESS OR IMPLIED EXCEPT FOR EXPLICIT LIMITED WRITTEN WARRANTIES ISSUED TO AND ACCEPTED BY BUILDING OWNERS IN ACCORDANCE WITH STO'S WARRANTY PROGRAMS WHICH ARE SUBJECT TO CHANGE FROM TIME TO TIME. For the fullest, most current information on proper application, clean-up, mixing and other specifications and warranties, cautions and disclaimers, please refer to the Sto Corp. website, [www.stocorp.com](http://www.stocorp.com)

[www.stocorp.com](http://www.stocorp.com)