

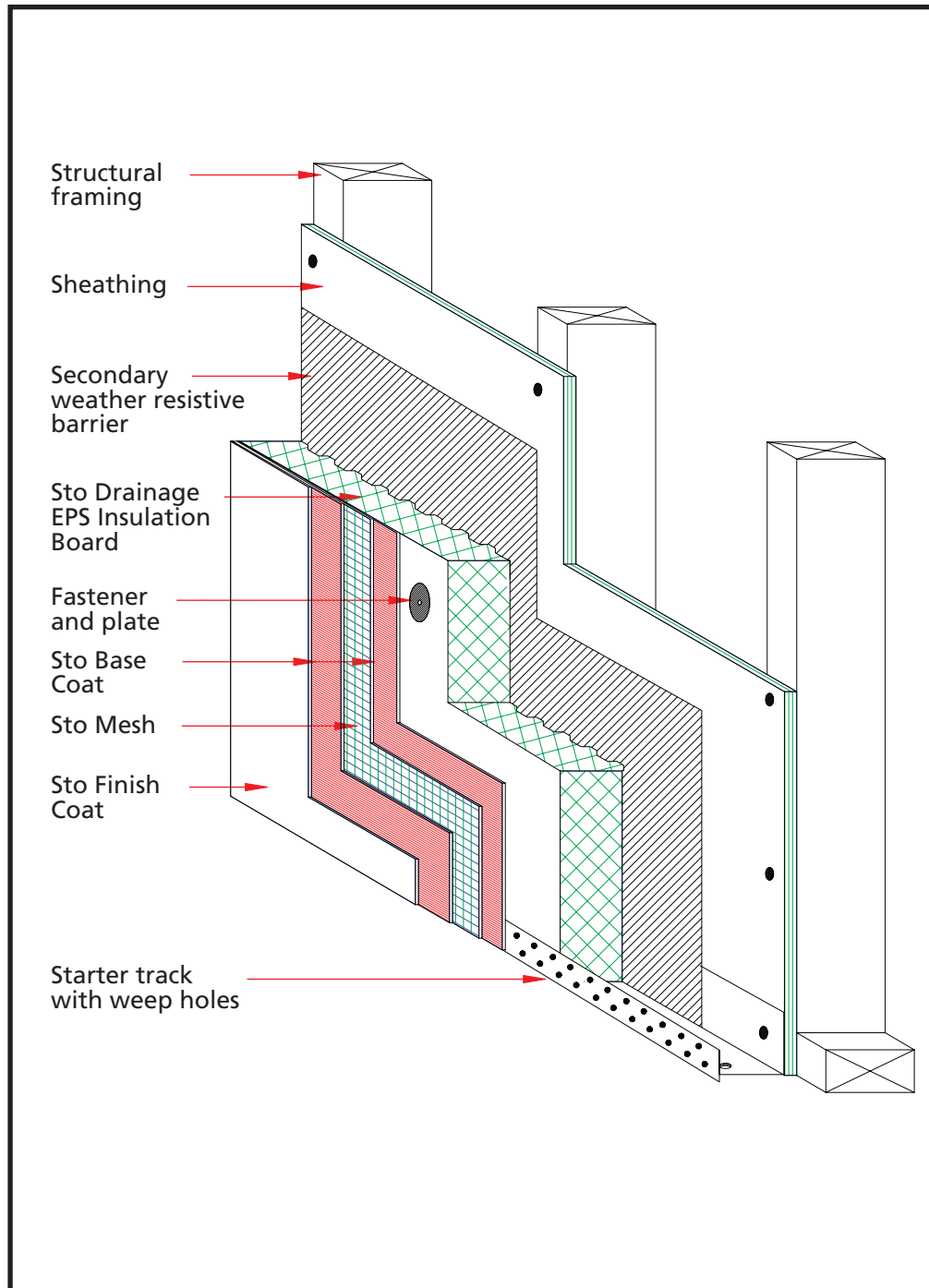
EIFS: StoTherm™ Rainscreen 9.XX Series

Details Index

Description	Detail#
On Wood Frame Construction	9.00
Drainage EPS Insulation Board	9.01
Reveals/Aesthetic Grooves	9.03
Aesthetic Band/Projection or Build-Out	9.04
Grade Condition with Waterproofed Foundation	9.10
Flashing at Window Sill (Window with Nailing Flange)	9.20
Pan Flashing at Window Sill (Window with No Nailing Flange)	9.20A
Flashing at Window Sill with StoTherm™ Trim (Window with Nailing Flange)	9.20B
Flashing at Window Head (Window with Nailing Flange)	9.21
Flashing at Window Head with StoTherm™ Trim (Window with Nailing Flange)	9.21B
Flashing at Window Head with StoTherm™ Trim and Drip Edge (Window with Nailing Flange)	9.21C
Window Jamb (Window with Nailing Flange)	9.22
Window Jamb with StoTherm™ Trim (Window with Nailing Flange)	9.22B
Expansion Joint at Floorline	9.30
Expansion Joint at Floorline with StoTherm™ Accent Band	9.31
Wood Deck Connection	9.32
Alternate Roof/Wall Intersection Flashing System	9.62
Surface Mount Fixture Penetration through the System	9.71

StoTherm™ Rainscreen on Wood Frame Construction

Date: October 2007



Notes:

1. Secondary weather resistive barrier as required by local code, (e.g. Southern Building Code, minimum one layer Type 15 felt waterproof building paper or equivalent).
2. Sto Drainage EPS Insulation Board minimum 1-1/2" (38 mm) thick.

ATTENTION

Sto products are intended for use by qualified professional contractors, not consumers, as a component of a larger construction assembly as specified by a qualified design professional, general contractor or builder. They should be installed in accordance with those specifications and Sto's instructions. Sto Corp. disclaims all, and assumes no, liability for on-site inspections, for its products applied improperly, or by unqualified persons or entities, or as part of an improperly designed or constructed building, for the nonperformance of adjacent building components or assemblies, or for other construction activities beyond Sto's control. Improper use of Sto products or use as part of an improperly designed or constructed larger assembly or building may result in serious damage to Sto products, and to the structure of the building or its components. **STO CORP. DISCLAIMS ALL WARRANTIES EXPRESS OR IMPLIED EXCEPT FOR EXPLICIT LIMITED WRITTEN WARRANTIES ISSUED TO AND ACCEPTED BY BUILDING OWNERS IN ACCORDANCE WITH STO'S WARRANTY PROGRAMS WHICH ARE SUBJECT TO CHANGE FROM TIME TO TIME.** For the fullest, most current information on proper application, clean-up, mixing and other specifications and warranties, cautions and disclaimers, please refer to the Sto Corp. website, www.stocorp.com.

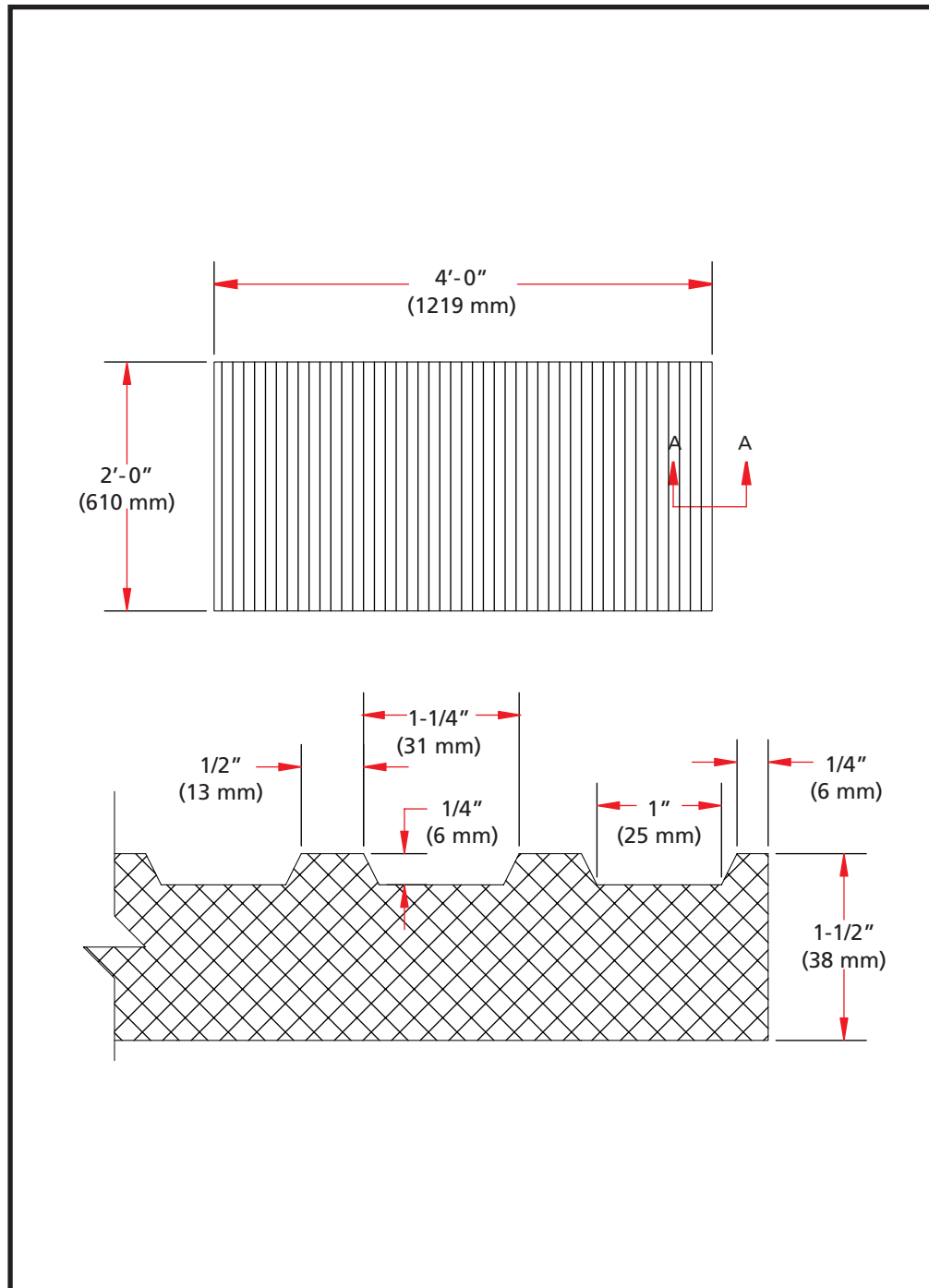
www.stocorp.com



StoTherm™ Rainscreen Drainage EPS Insulation Board

Detail No.: 9.01

Date: October 2007



Notes:

1. Nominal 1.0 lb/cu.ft (16 kg/m) Expanded Polystyrene Insulation Board.
2. Complies with ATSM C 578 Type I requirements.
3. Complies with EIMA Guideline Specification for Expanded Polystyrene (EPS) Insulation Board.
4. Minimum 1 - 1/2" (38 mm) thick.

ATTENTION

Sto products are intended for use by qualified professional contractors, not consumers, as a component of a larger construction assembly as specified by a qualified design professional, general contractor or builder. They should be installed in accordance with those specifications and Sto's instructions. Sto Corp. disclaims all, and assumes no, liability for on-site inspections, for its products applied improperly, or by unqualified persons or entities, or as part of an improperly designed or constructed building, for the nonperformance of adjacent building components or assemblies, or for other construction activities beyond Sto's control. Improper use of Sto products or use as part of an improperly designed or constructed larger assembly or building may result in serious damage to Sto products, and to the structure of the building or its components. **STO CORP. DISCLAIMS ALL WARRANTIES EXPRESS OR IMPLIED EXCEPT FOR EXPLICIT LIMITED WRITTEN WARRANTIES ISSUED TO AND ACCEPTED BY BUILDING OWNERS IN ACCORDANCE WITH STO'S WARRANTY PROGRAMS WHICH ARE SUBJECT TO CHANGE FROM TIME TO TIME.** For the fullest, most current information on proper application, clean-up, mixing and other specifications and warranties, cautions and disclaimers, please refer to the Sto Corp. website, www.stocorp.com.

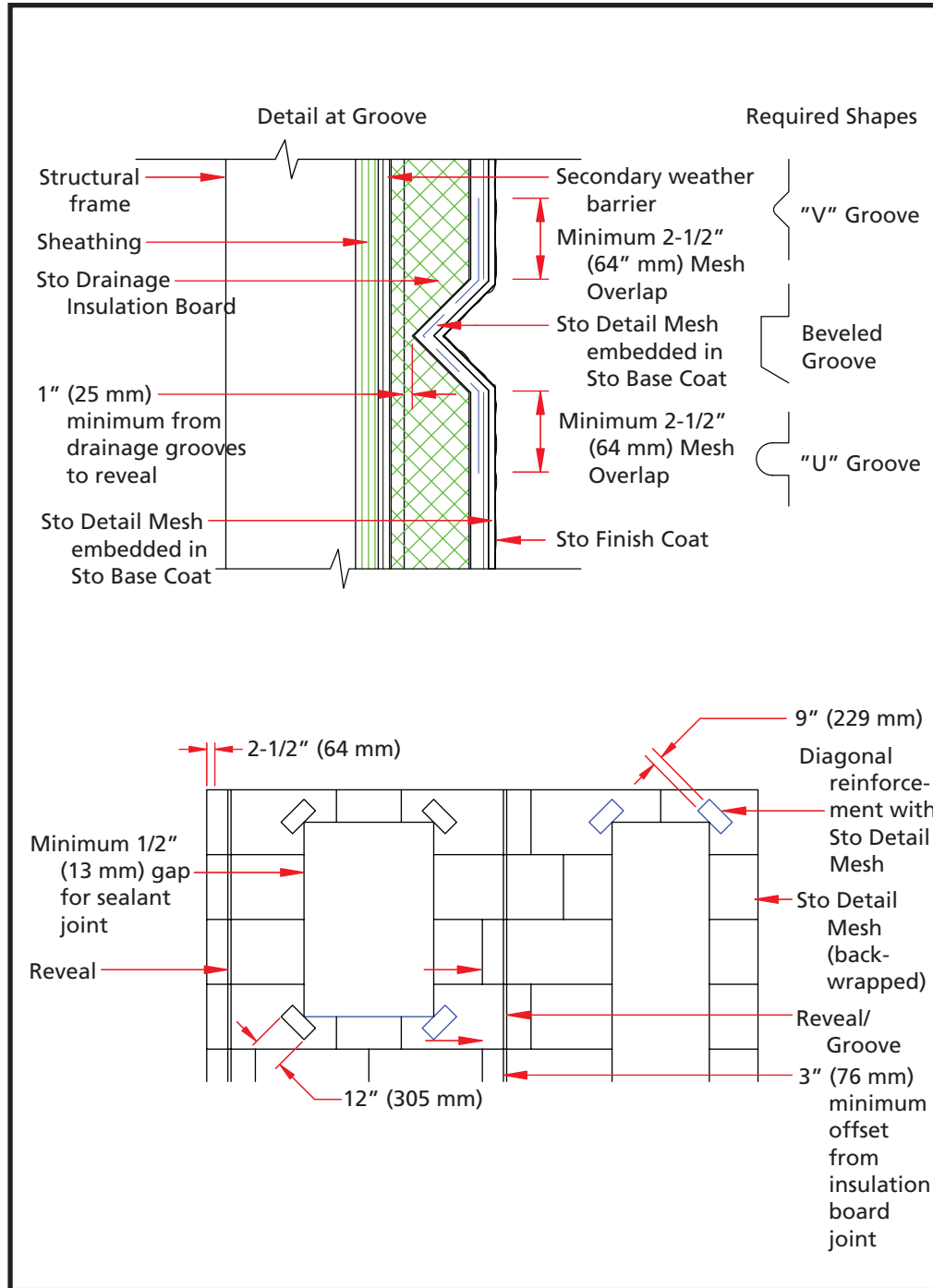
www.stocorp.com



StoTherm™ Rainscreen Reveals/Aesthetic Grooves

Detail No.: 9.03

Date: October 2007



Notes:

1. Do not locate reveals at stress areas such as corners of windows, doors, etc.
2. Horizontal reveals must be sloped to shed water. Minimum required slope is 1:2 (27 degrees), steeper for northern climates.
3. Offset reveals minimum 3" (76 mm) from insulation board joints.
4. Use Sto Detail Mesh to reinforce reveals and overlap with Sto Detail Mesh minimum 2-1/2" (64 mm).
5. Use proper tools to avoid build-up of material in reveals and to ensure consistent thickness.
6. Maintain minimum 1" (25 mm) thickness between drainage grooves and reveals.
7. Secondary weather resistive barrier as required by local code, (e.g., Southern Building Code, minimum one layer Type 15 felt, waterproof building paper or equivalent).

ATTENTION

Sto products are intended for use by qualified professional contractors, not consumers, as a component of a larger construction assembly as specified by a qualified design professional, general contractor or builder. They should be installed in accordance with those specifications and Sto's instructions. Sto Corp. disclaims all, and assumes no, liability for on-site inspections, for its products applied improperly, or by unqualified persons or entities, or as part of an improperly designed or constructed building, for the nonperformance of adjacent building components or assemblies, or for other construction activities beyond Sto's control. Improper use of Sto products or use as part of an improperly designed or constructed larger assembly or building may result in serious damage to Sto products, and to the structure of the building or its components. **STO CORP. DISCLAIMS ALL WARRANTIES EXPRESS OR IMPLIED EXCEPT FOR EXPLICIT LIMITED WRITTEN WARRANTIES ISSUED TO AND ACCEPTED BY BUILDING OWNERS IN ACCORDANCE WITH STO'S WARRANTY PROGRAMS WHICH ARE SUBJECT TO CHANGE FROM TIME TO TIME.** For the fullest, most current information on proper application, clean-up, mixing and other specifications and warranties, cautions and disclaimers, please refer to the Sto Corp. website, www.stocorp.com.

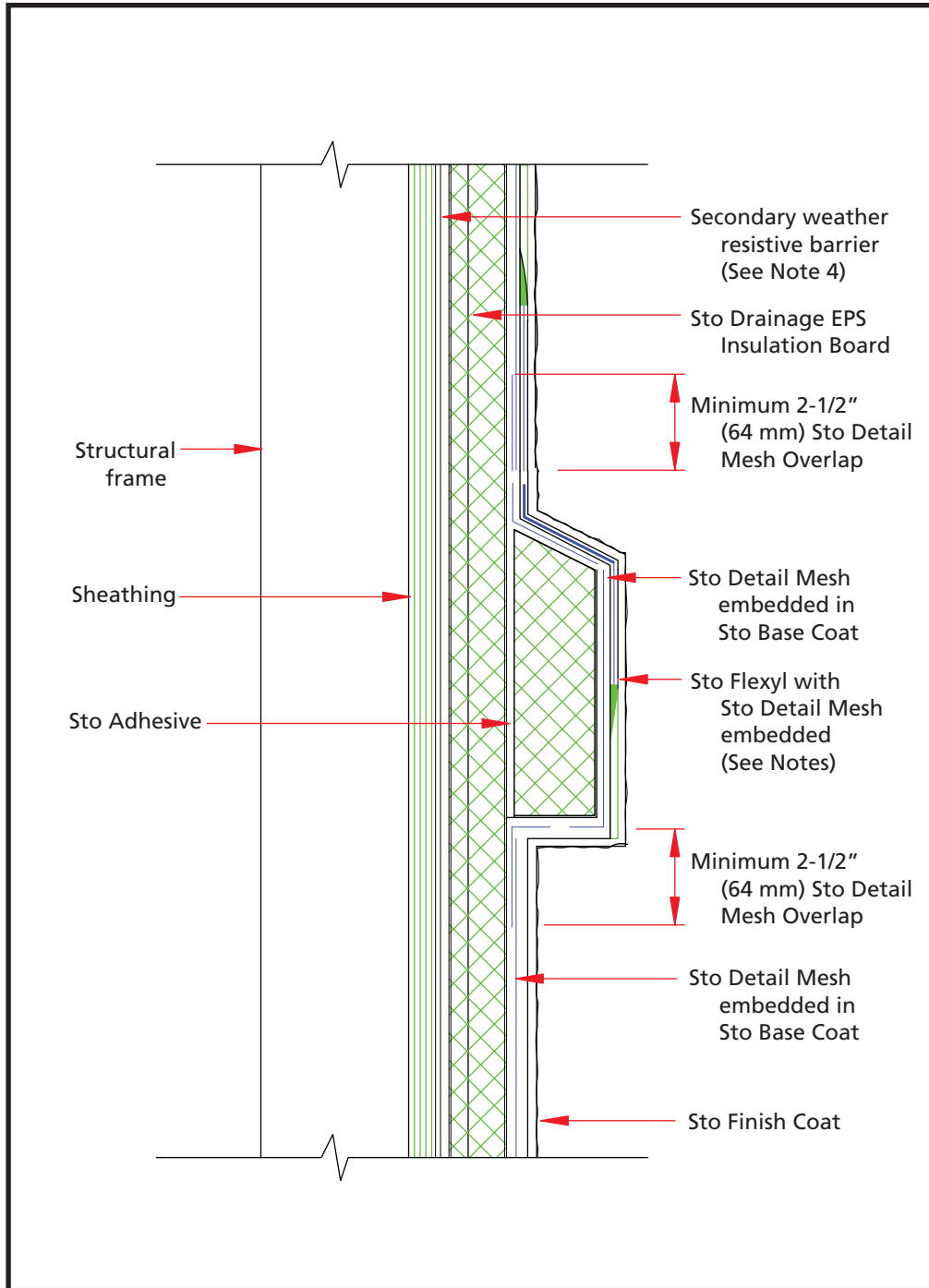
www.stocorp.com



StoTherm™ Rainscreen Aesthetic Band/Projection or Build-Out

Detail No.: 9.04

Date: October 2007



Notes:

1. Sto Flexyl requires primer prior to application of finish coat with Sto Detail Mesh required for projections greater than 2 inches (51 mm).
2. Minimum required slope is 1:2 (27 degrees) and maximum width is 12 inches (300 mm). Increase slope for northern climates to prevent accumulation of ice/snow and water on surface. Periodic inspections and increased maintenance of coating may be required.
3. Secondary weather resistive barrier as required by local code, (e.g., Southern Building Code, minimum one layer Type 15 felt, waterproof building paper or equivalent).
4. Sto Drainage EPS Insulation Board minimum 1-1/2" (38 mm) thick.

ATTENTION

Sto products are intended for use by qualified professional contractors, not consumers, as a component of a larger construction assembly as specified by a qualified design professional, general contractor or builder. They should be installed in accordance with those specifications and Sto's instructions. Sto Corp. disclaims all, and assumes no, liability for on-site inspections, for its products applied improperly, or by unqualified persons or entities, or as part of an improperly designed or constructed building, for the nonperformance of adjacent building components or assemblies, or for other construction activities beyond Sto's control. Improper use of Sto products or use as part of an improperly designed or constructed larger assembly or building may result in serious damage to Sto products, and to the structure of the building or its components. **STO CORP. DISCLAIMS ALL WARRANTIES EXPRESS OR IMPLIED EXCEPT FOR EXPLICIT LIMITED WRITTEN WARRANTIES ISSUED TO AND ACCEPTED BY BUILDING OWNERS IN ACCORDANCE WITH STO'S WARRANTY PROGRAMS WHICH ARE SUBJECT TO CHANGE FROM TIME TO TIME.** For the fullest, most current information on proper application, clean-up, mixing and other specifications and warranties, cautions and disclaimers, please refer to the Sto Corp. website, www.stocorp.com.

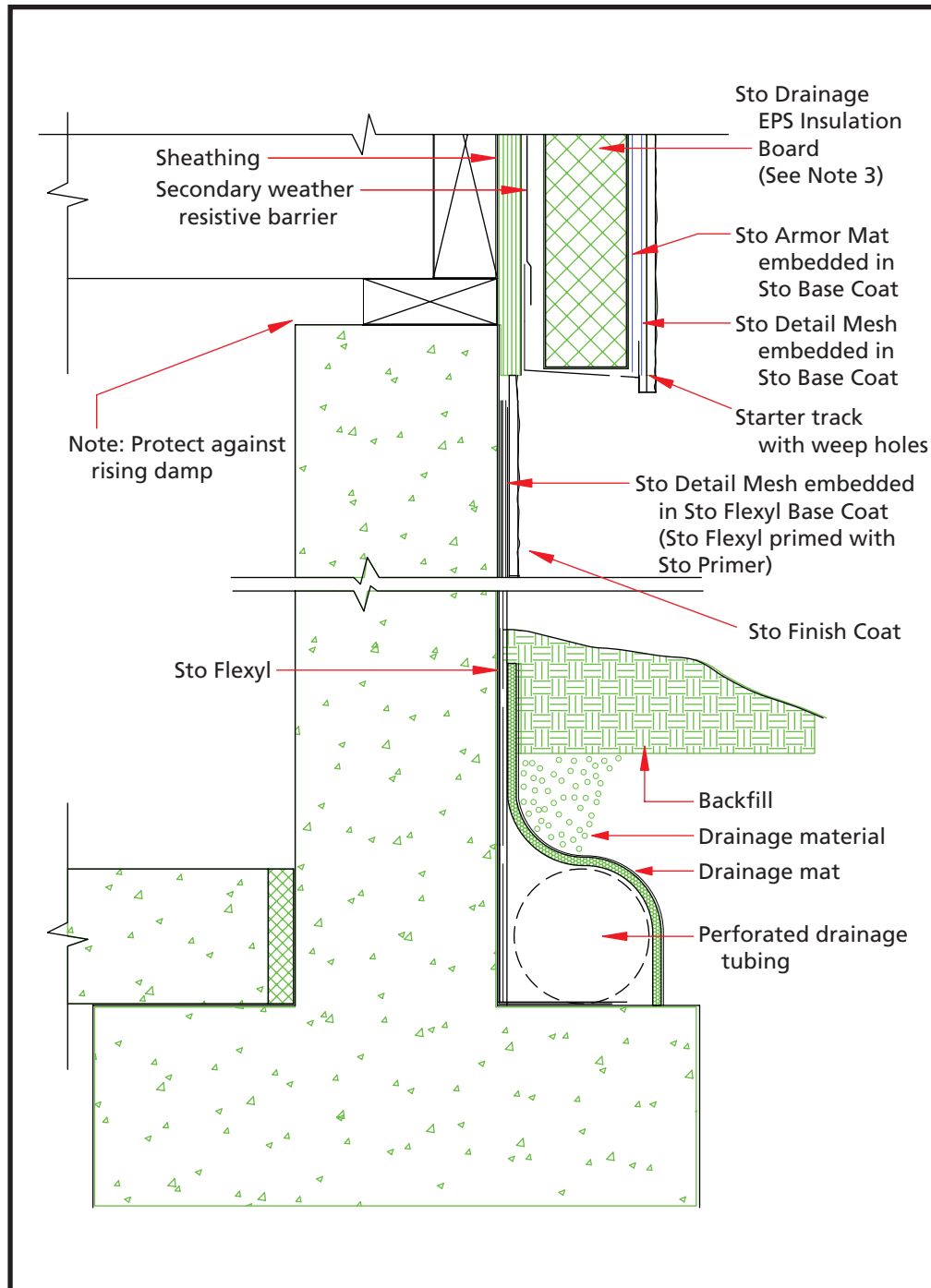
www.stocorp.com



StoTherm™ Rainscreen Grade Condition with Waterproofed Foundation

Detail No.: 9.10

Date: October 2007



Notes:

1. Not recommended to extend finish coat below grade. Terminate finish coat minimum 8" (203 mm) above grade, higher for snow regions.
2. Secondary weather resistive barrier as required by local code, (e.g., Southern Building Code, minimum one layer Type 15 felt, waterproof building paper or equivalent).
3. Sto Drainage EPS Insulation Board minimum 1-1/2" (38 mm) thick.

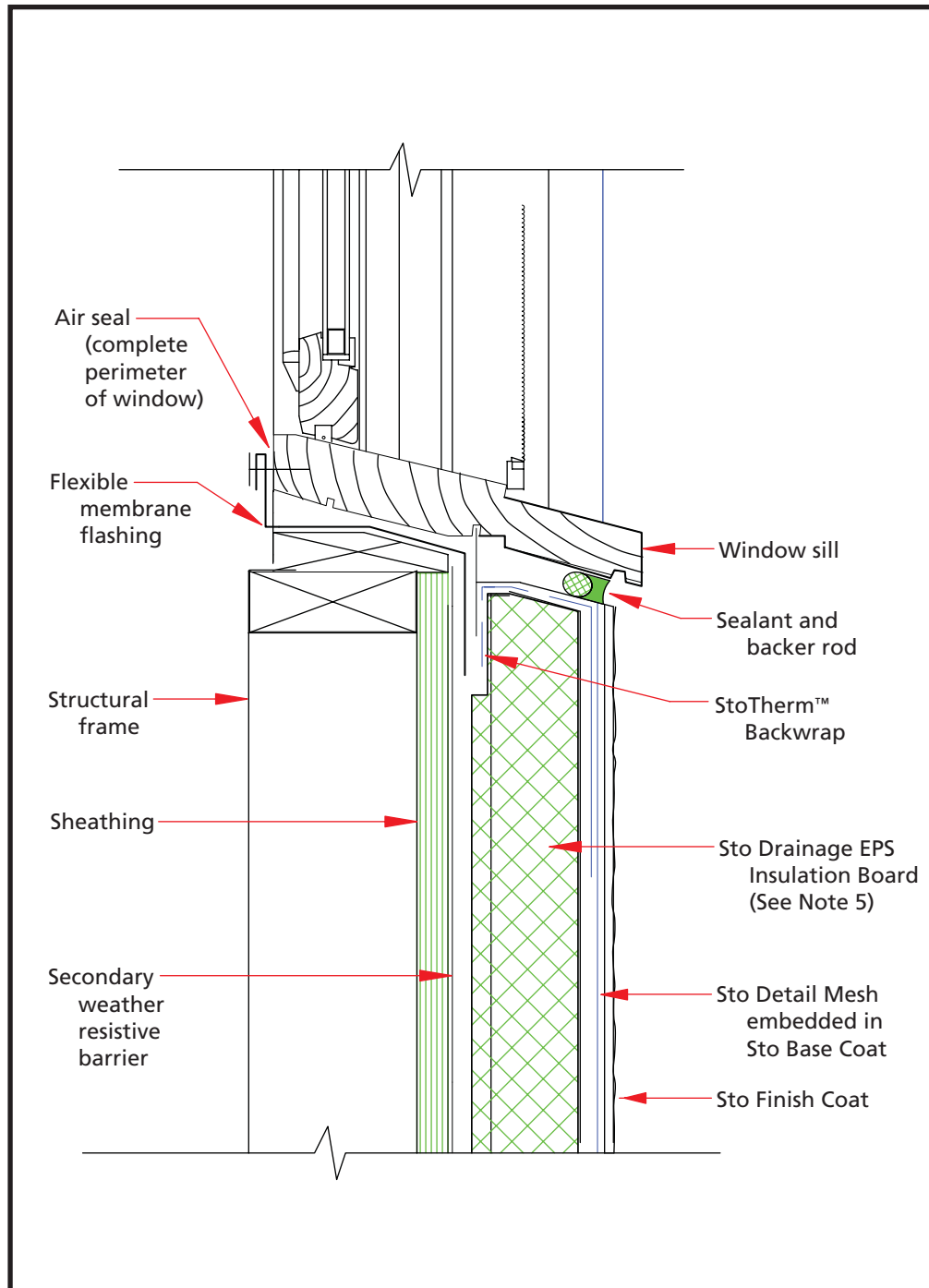
ATTENTION

Sto products are intended for use by qualified professional contractors, not consumers, as a component of a larger construction assembly as specified by a qualified design professional, general contractor or builder. They should be installed in accordance with those specifications and Sto's instructions. Sto Corp. disclaims all, and assumes no, liability for on-site inspections, for its products applied improperly, or by unqualified persons or entities, or as part of an improperly designed or constructed building, for the nonperformance of adjacent building components or assemblies, or for other construction activities beyond Sto's control. Improper use of Sto products or use as part of an improperly designed or constructed larger assembly or building may result in serious damage to Sto products, and to the structure of the building or its components. **STO CORP. DISCLAIMS ALL WARRANTIES EXPRESS OR IMPLIED EXCEPT FOR EXPLICIT LIMITED WRITTEN WARRANTIES ISSUED TO AND ACCEPTED BY BUILDING OWNERS IN ACCORDANCE WITH STO'S WARRANTY PROGRAMS WHICH ARE SUBJECT TO CHANGE FROM TIME TO TIME.** For the fullest, most current information on proper application, clean-up, mixing and other specifications and warranties, cautions and disclaimers, please refer to the Sto Corp. website, www.stocorp.com.

www.stocorp.com

StoTherm™ Rainscreen Flashing at Window Sill (Window with Nailing Flange)

Date: October 2007

**Notes:**

1. Provide minimum 3/4" (19 mm) depth from back of insulation board to face of window frame for sufficient depth to install sealant.
2. Provide minimum 1/2" (13 mm) sealant joint width.
3. Install flexible membrane flashing minimum 4" (102 mm) up jambs of rough opening to create end dams.
4. Secondary weather resistive barrier as required by local code, (e.g., Southern Building Code, minimum one layer Type 15 felt, waterproof building paper or equivalent).
5. Sto Drainage EPS Insulation Board minimum 1-1/2" (38 mm) thick.

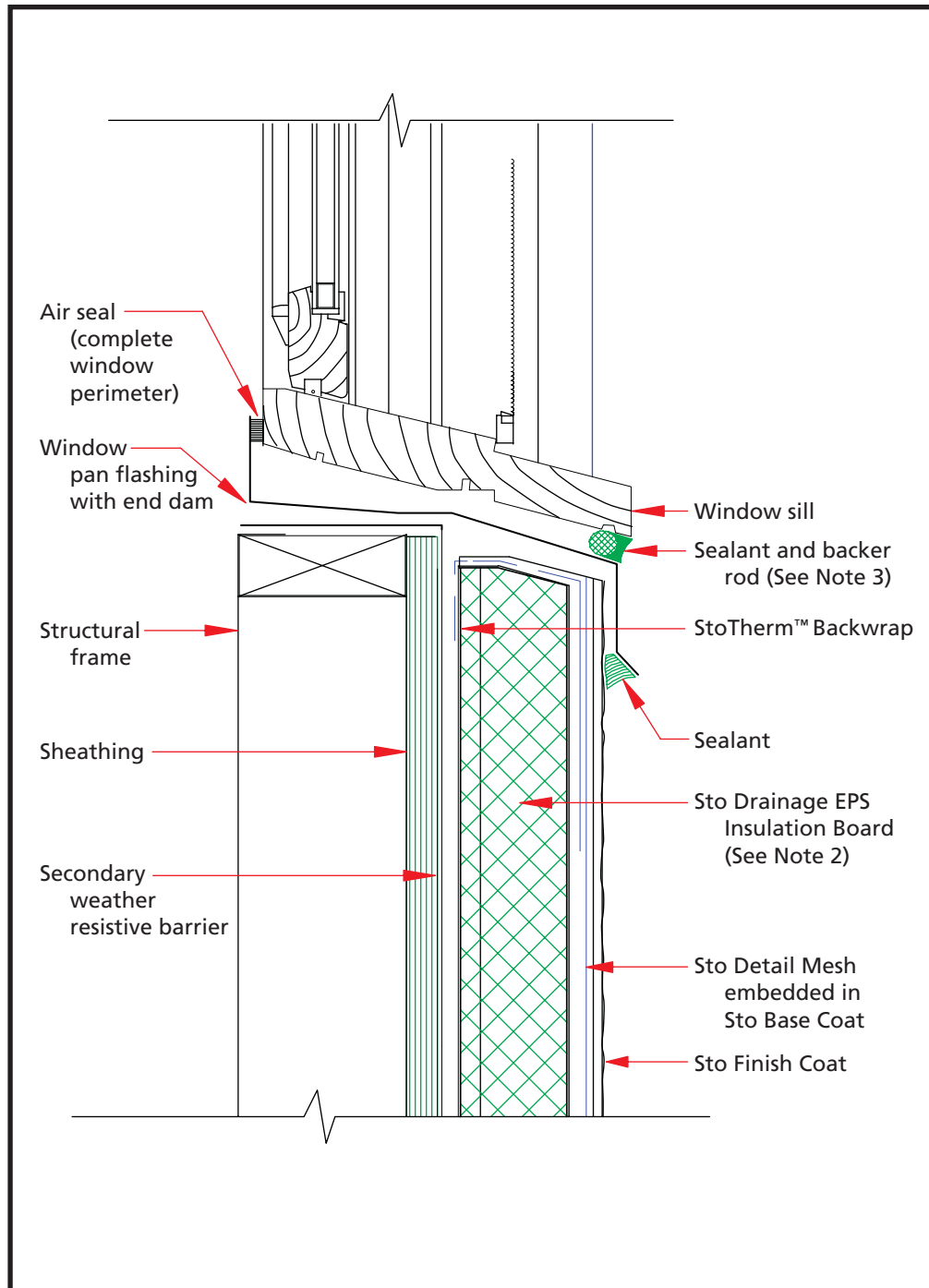
ATTENTION

Sto products are intended for use by qualified professional contractors, not consumers, as a component of a larger construction assembly as specified by a qualified design professional, general contractor or builder. They should be installed in accordance with those specifications and Sto's instructions. Sto Corp. disclaims all, and assumes no, liability for on-site inspections, for its products applied improperly, or by unqualified persons or entities, or as part of an improperly designed or constructed building, for the nonperformance of adjacent building components or assemblies, or for other construction activities beyond Sto's control. Improper use of Sto products or use as part of an improperly designed or constructed larger assembly or building may result in serious damage to Sto products, and to the structure of the building or its components. **STO CORP. DISCLAIMS ALL WARRANTIES EXPRESS OR IMPLIED EXCEPT FOR EXPLICIT LIMITED WRITTEN WARRANTIES ISSUED TO AND ACCEPTED BY BUILDING OWNERS IN ACCORDANCE WITH STO'S WARRANTY PROGRAMS WHICH ARE SUBJECT TO CHANGE FROM TIME TO TIME.** For the fullest, most current information on proper application, clean-up, mixing and other specifications and warranties, cautions and disclaimers, please refer to the Sto Corp. website, www.stocorp.com.

www.stocorp.com

StoTherm™ Rainscreen Pan Flashing at Window Sill (Window with No Nailing Flange)

Date: October 2007

**Notes:**

1. Secondary weather resistive barrier as required by local code, (e.g., Southern Building Code, minimum one layer Type 15 felt, waterproof building paper or equivalent).
2. Sto Drainage EPS Insulation Board minimum 1-1/2" (38 mm) thick.
3. Weep holes to be provided every 2 feet (610 mm) through the backer rod and sealant and at window corners and mullions.

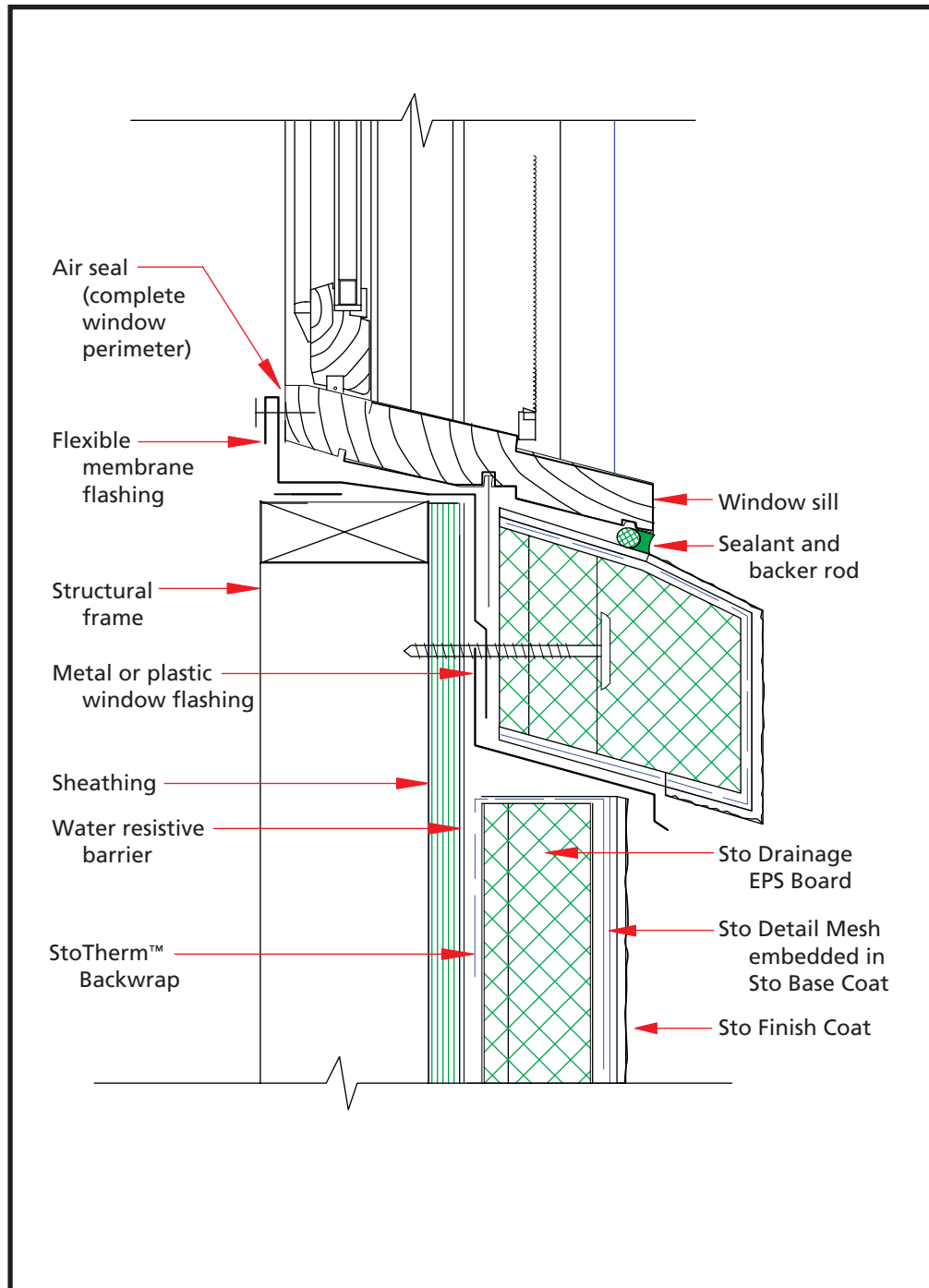
ATTENTION

Sto products are intended for use by qualified professional contractors, not consumers, as a component of a larger construction assembly as specified by a qualified design professional, general contractor or builder. They should be installed in accordance with those specifications and Sto's instructions. Sto Corp. disclaims all, and assumes no, liability for on-site inspections, for its products applied improperly, or by unqualified persons or entities, or as part of an improperly designed or constructed building, for the nonperformance of adjacent building components or assemblies, or for other construction activities beyond Sto's control. Improper use of Sto products or use as part of an improperly designed or constructed larger assembly or building may result in serious damage to Sto products, and to the structure of the building or its components. **STO CORP. DISCLAIMS ALL WARRANTIES EXPRESS OR IMPLIED EXCEPT FOR EXPLICIT LIMITED WRITTEN WARRANTIES ISSUED TO AND ACCEPTED BY BUILDING OWNERS IN ACCORDANCE WITH STO'S WARRANTY PROGRAMS WHICH ARE SUBJECT TO CHANGE FROM TIME TO TIME.** For the fullest, most current information on proper application, clean-up, mixing and other specifications and warranties, cautions and disclaimers, please refer to the Sto Corp. website, www.stocorp.com.

www.stocorp.com

StoTherm™ Rainscreen Flashing at Window Sill with StoTherm™ Trim (Window with Nailing Flange)

Date: October 2007

**Notes:**

1. Provide minimum 3/4" (19 mm) depth from back of insulation board to face of window frame for sufficient depth to install sealant.
2. Provide minimum 1/2" (13 mm) sealant joint width.
3. Install flexible membrane flashing minimum 4" (102 mm) up jambs of rough opening to create end dams.
4. StoTherm sill trim pre-wrapped with base coat and reinforcing mesh on top and bottom. Leave face exposed for mechanical attachment. Attach every 8 inches (209 mm) on center and no more than 4 inches (102 mm) from ends with appropriate fastener. Then adhesively attach final trim piece.

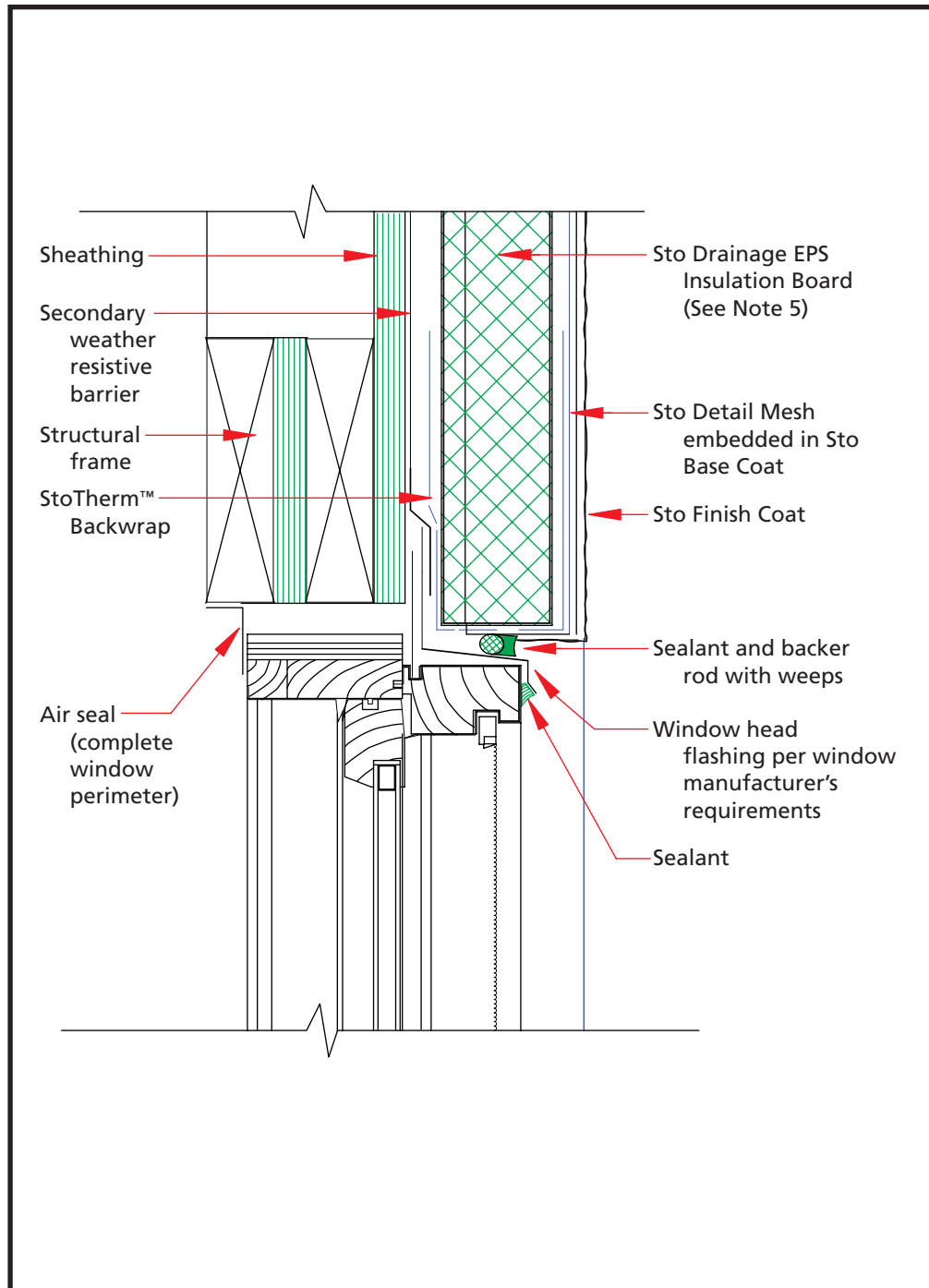
ATTENTION

Sto products are intended for use by qualified professional contractors, not consumers, as a component of a larger construction assembly as specified by a qualified design professional, general contractor or builder. They should be installed in accordance with those specifications and Sto's instructions. Sto Corp. disclaims all, and assumes no, liability for on-site inspections, for its products applied improperly, or by unqualified persons or entities, or as part of an improperly designed or constructed building, for the nonperformance of adjacent building components or assemblies, or for other construction activities beyond Sto's control. Improper use of Sto products or use as part of an improperly designed or constructed larger assembly or building may result in serious damage to Sto products, and to the structure of the building or its components. **STO CORP. DISCLAIMS ALL WARRANTIES EXPRESS OR IMPLIED EXCEPT FOR EXPLICIT LIMITED WRITTEN WARRANTIES ISSUED TO AND ACCEPTED BY BUILDING OWNERS IN ACCORDANCE WITH STO'S WARRANTY PROGRAMS WHICH ARE SUBJECT TO CHANGE FROM TIME TO TIME.** For the fullest, most current information on proper application, clean-up, mixing and other specifications and warranties, cautions and disclaimers, please refer to the Sto Corp. website, www.stocorp.com.

www.stocorp.com

StoTherm™ Rainscreen Flashing at Window Head (Window with Nailing Flange)

Date: October 2007



Notes:

1. Provide minimum 3/4" (19 mm) depth from back of insulation board to face of window frame for sufficient depth to install sealant.
2. Provide minimum 1/2" (13 mm) sealant joint width.
3. Weep holes to be provided every 2 feet (610 mm) through the sealant joint above the flashing.
4. Secondary weather resistive barrier as required by local code, (e.g., Southern Building Code, minimum one layer Type 15 felt, waterproof building paper or equivalent).
5. Sto Drainage EPS Insulation Board minimum 1-1/2" (38 mm) thick.

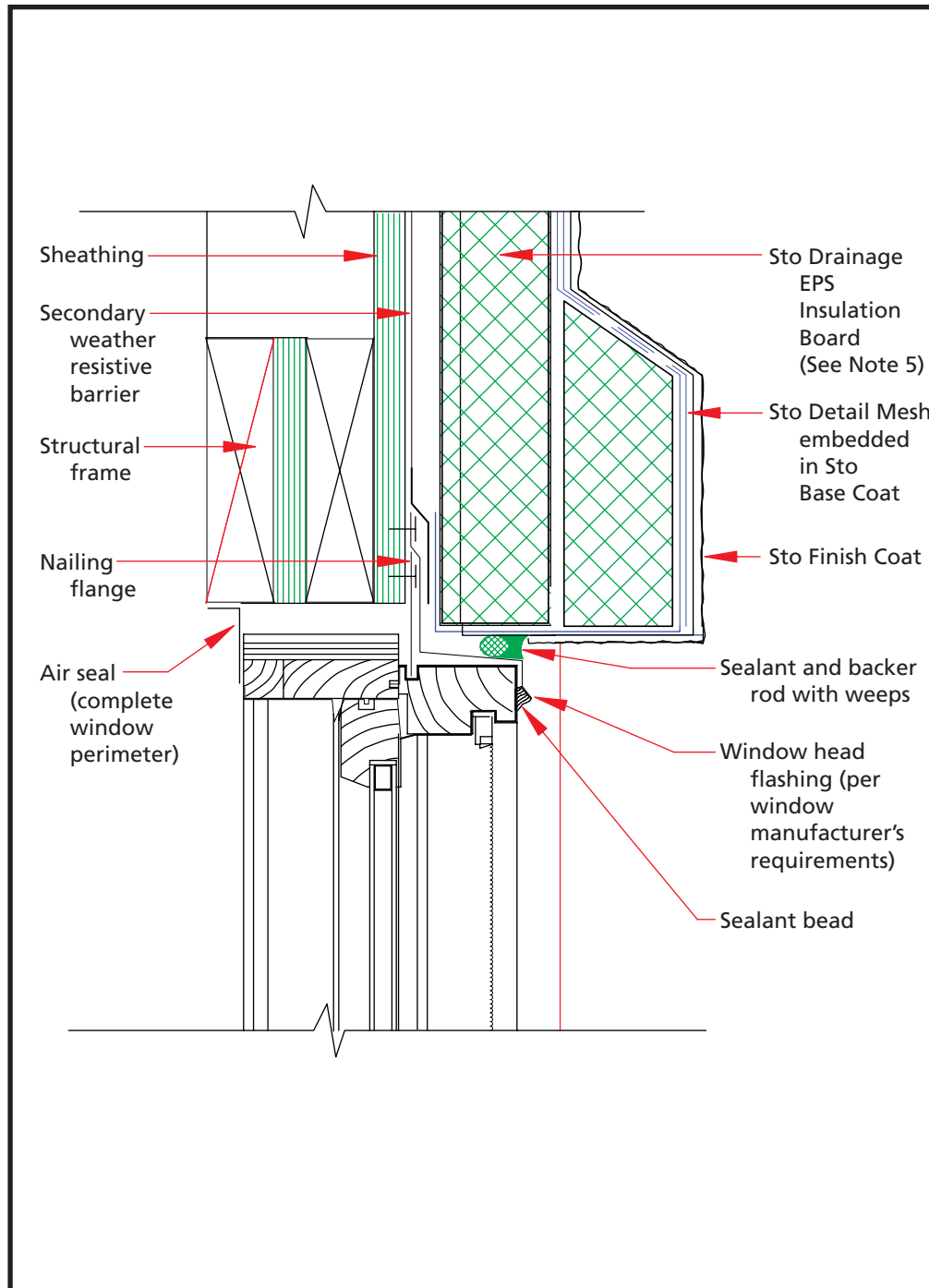
ATTENTION

Sto products are intended for use by qualified professional contractors, not consumers, as a component of a larger construction assembly as specified by a qualified design professional, general contractor or builder. They should be installed in accordance with those specifications and Sto's instructions. Sto Corp. disclaims all, and assumes no, liability for on-site inspections, for its products applied improperly, or by unqualified persons or entities, or as part of an improperly designed or constructed building, for the nonperformance of adjacent building components or assemblies, or for other construction activities beyond Sto's control. Improper use of Sto products or use as part of an improperly designed or constructed larger assembly or building may result in serious damage to Sto products, and to the structure of the building or its components. **STO CORP. DISCLAIMS ALL WARRANTIES EXPRESS OR IMPLIED EXCEPT FOR EXPLICIT LIMITED WRITTEN WARRANTIES ISSUED TO AND ACCEPTED BY BUILDING OWNERS IN ACCORDANCE WITH STO'S WARRANTY PROGRAMS WHICH ARE SUBJECT TO CHANGE FROM TIME TO TIME.** For the fullest, most current information on proper application, clean-up, mixing and other specifications and warranties, cautions and disclaimers, please refer to the Sto Corp. website, www.stocorp.com.

www.stocorp.com

StoTherm™ Rainscreen Flashing at Window Head with StoTherm™ Trim (Window with Nailing Flange)

Date: October 2007



Notes:

1. Provide minimum 3/4" (19 mm) depth from back of insulation board to face of window frame for sufficient depth to install sealant.
2. Provide minimum 1/2" (13 mm) sealant joint width.
3. Weep holes to be provided every 2 feet (610 mm) through the sealant joint above the flashing.
4. Secondary weather resistive barrier as required by local code, (e.g., Southern Building Code, minimum one layer Type 15 felt, waterproof building paper or equivalent).
5. Sto Drainage EPS Insulation Board minimum 1-1/2" (38 mm) thick.
6. StoTherm trim slope minimum 1:2 (27 degrees).

ATTENTION

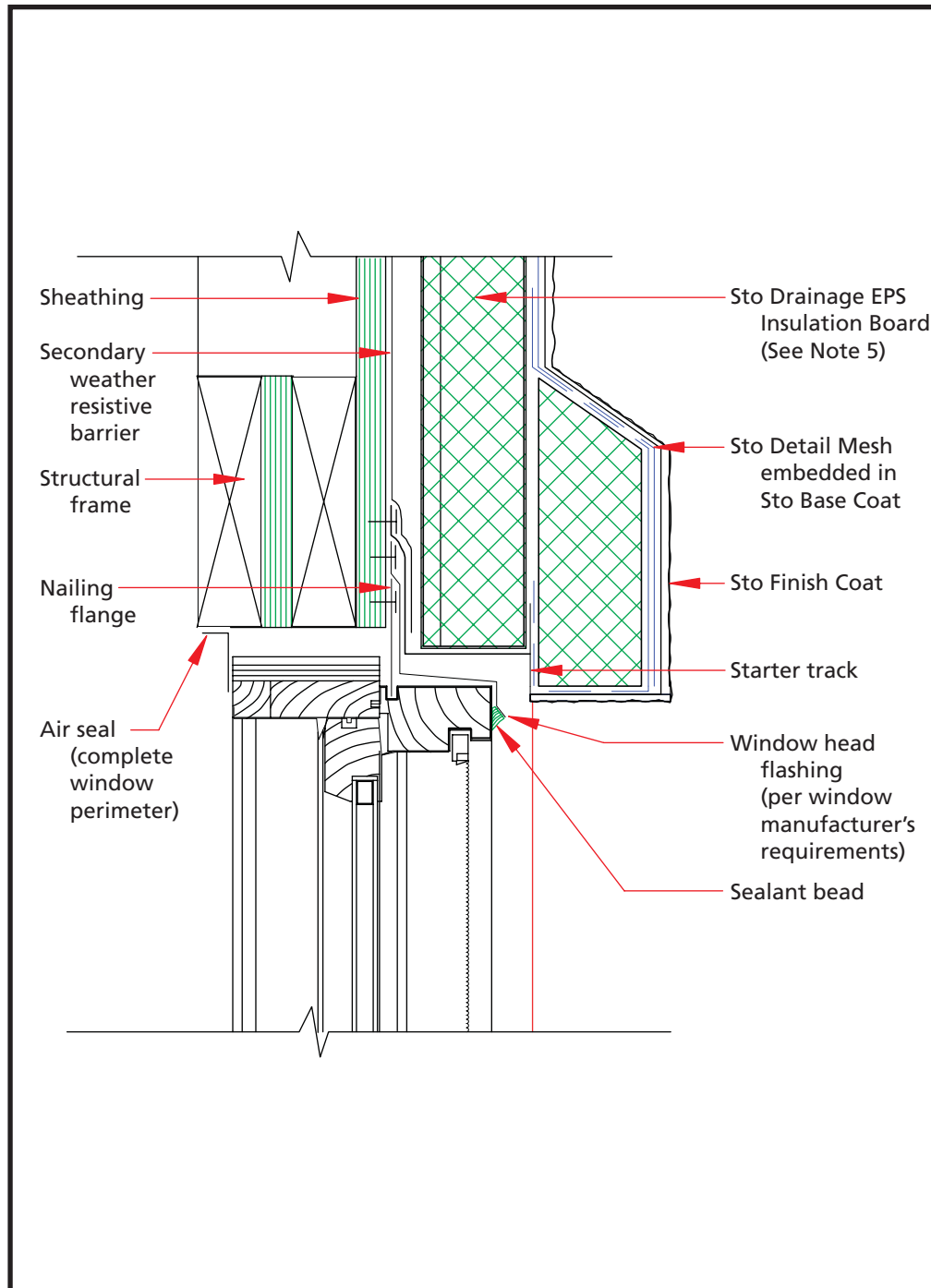
Sto products are intended for use by qualified professional contractors, not consumers, as a component of a larger construction assembly as specified by a qualified design professional, general contractor or builder. They should be installed in accordance with those specifications and Sto's instructions. Sto Corp. disclaims all, and assumes no, liability for on-site inspections, for its products applied improperly, or by unqualified persons or entities, or as part of an improperly designed or constructed building, for the nonperformance of adjacent building components or assemblies, or for other construction activities beyond Sto's control. Improper use of Sto products or use as part of an improperly designed or constructed larger assembly or building may result in serious damage to Sto products, and to the structure of the building or its components. **STO CORP. DISCLAIMS ALL WARRANTIES EXPRESS OR IMPLIED EXCEPT FOR EXPLICIT LIMITED WRITTEN WARRANTIES ISSUED TO AND ACCEPTED BY BUILDING OWNERS IN ACCORDANCE WITH STO'S WARRANTY PROGRAMS WHICH ARE SUBJECT TO CHANGE FROM TIME TO TIME.** For the fullest, most current information on proper application, clean-up, mixing and other specifications and warranties, cautions and disclaimers, please refer to the Sto Corp. website, www.stocorp.com.

www.stocorp.com

StoTherm™ Rainscreen

Flashing at Window Head with StoTherm™ Trim and Drip Edge (Window with Nailing Flange)

Date: October 2007

**Notes:**

1. Provide minimum 3/4" (19 mm) depth from back of insulation board to face of window frame for sufficient depth to install sealant.
2. Provide minimum 1/2" (13 mm) sealant joint width.
3. Weep holes to be provided every 2 feet (610 mm) through the sealant joint above the flashing.
4. Secondary weather resistive barrier as required by local code, (e.g., Southern Building Code, minimum one layer Type 15 felt, waterproof building paper or equivalent).
5. Sto Drainage EPS Insulation Board minimum 1-1/2" (38 mm) thick.
6. StoTherm trim slope minimum 1:2 (27 degrees).
7. Embed starter track attachment flange in sealant before securing to substrate.

ATTENTION

Sto products are intended for use by qualified professional contractors, not consumers, as a component of a larger construction assembly as specified by a qualified design professional, general contractor or builder. They should be installed in accordance with those specifications and Sto's instructions. Sto Corp. disclaims all, and assumes no, liability for on-site inspections, for its products applied improperly, or by unqualified persons or entities, or as part of an improperly designed or constructed building, for the nonperformance of adjacent building components or assemblies, or for other construction activities beyond Sto's control. Improper use of Sto products or use as part of an improperly designed or constructed larger assembly or building may result in serious damage to Sto products, and to the structure of the building or its components. **STO CORP. DISCLAIMS ALL WARRANTIES EXPRESS OR IMPLIED EXCEPT FOR EXPLICIT LIMITED WRITTEN WARRANTIES ISSUED TO AND ACCEPTED BY BUILDING OWNERS IN ACCORDANCE WITH STO'S WARRANTY PROGRAMS WHICH ARE SUBJECT TO CHANGE FROM TIME TO TIME.** For the fullest, most current information on proper application, clean-up, mixing and other specifications and warranties, cautions and disclaimers, please refer to the Sto Corp. website, www.stocorp.com.

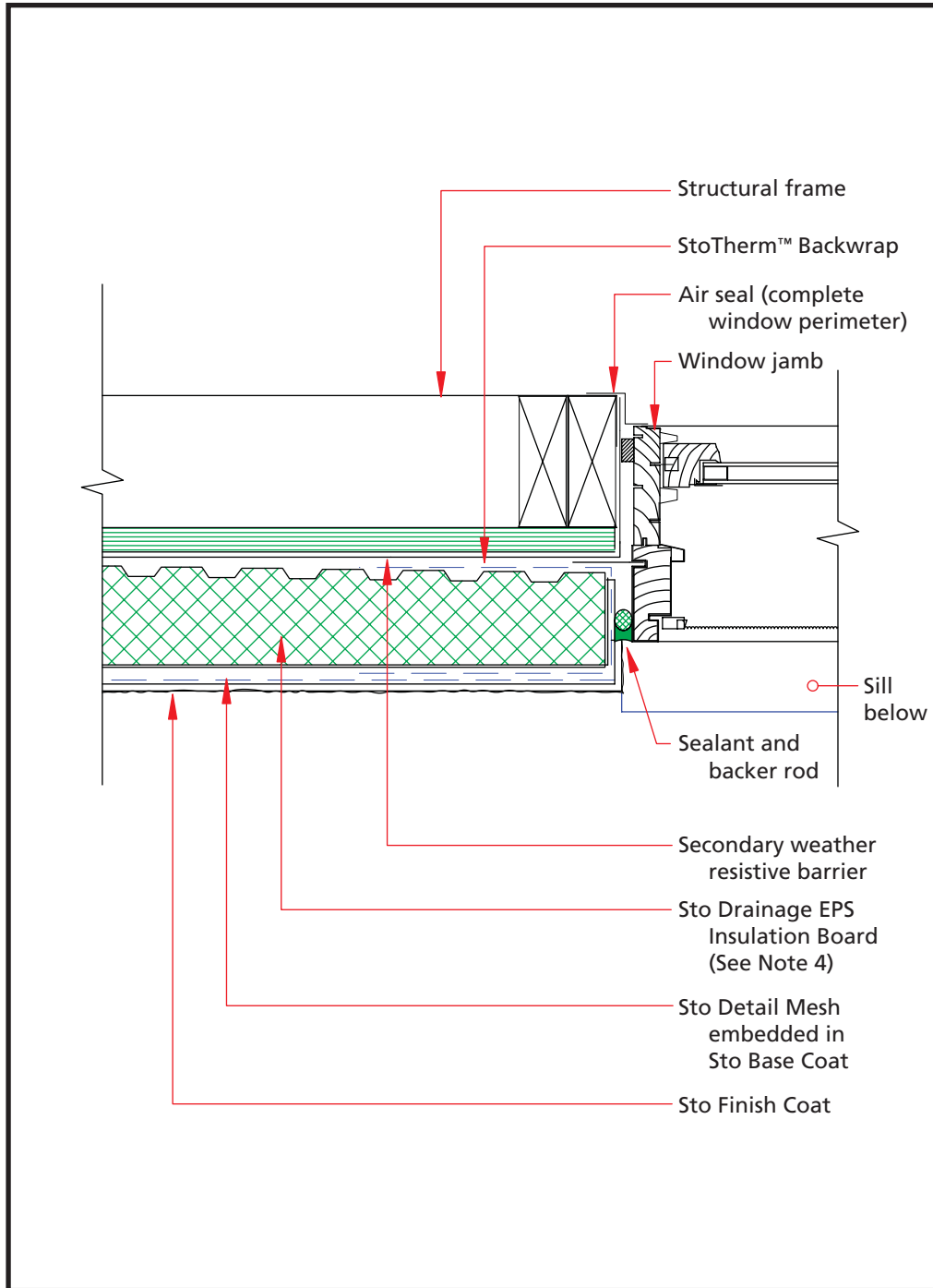
www.stocorp.com



StoTherm™ Rainscreen Window Jamb (Window with Nailing Flange)

Detail No.: 9.22

Date: October 2007



Notes:

1. Provide minimum 3/4" (19 mm) depth from back of insulation board to face of window frame for sufficient depth to install sealant.
2. Provide minimum 1/2" (13 mm) sealant joint width.
3. Secondary weather resistive barrier as required by local code, (e.g., Southern Building Code, minimum one layer Type 15 felt, waterproof building paper or equivalent).
4. Sto Drainage EPS Insulation Board minimum 1-1/2" (38 mm) thick.

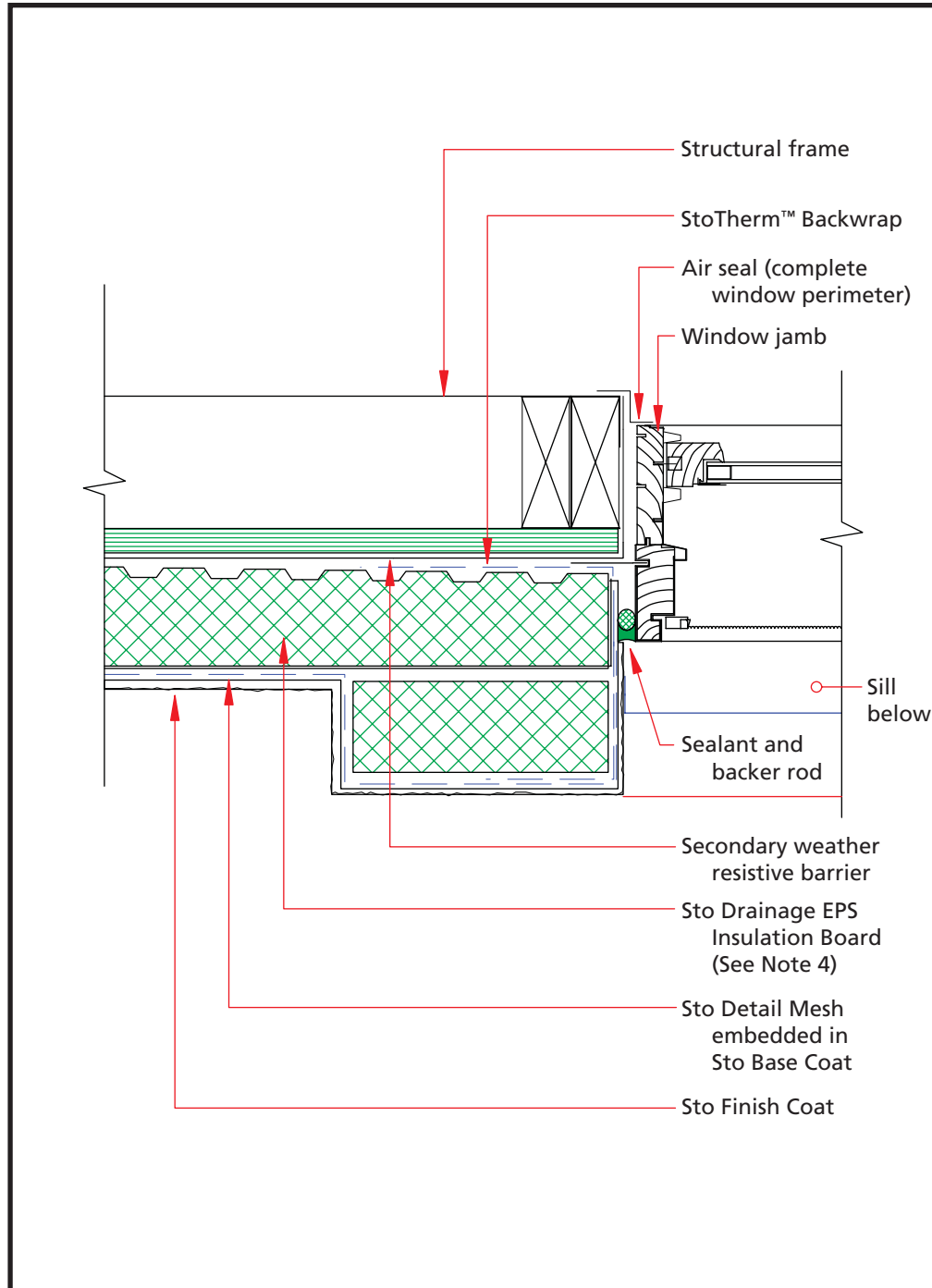
ATTENTION

Sto products are intended for use by qualified professional contractors, not consumers, as a component of a larger construction assembly as specified by a qualified design professional, general contractor or builder. They should be installed in accordance with those specifications and Sto's instructions. Sto Corp. disclaims all, and assumes no, liability for on-site inspections, for its products applied improperly, or by unqualified persons or entities, or as part of an improperly designed or constructed building, for the nonperformance of adjacent building components or assemblies, or for other construction activities beyond Sto's control. Improper use of Sto products or use as part of an improperly designed or constructed larger assembly or building may result in serious damage to Sto products, and to the structure of the building or its components. **STO CORP. DISCLAIMS ALL WARRANTIES EXPRESS OR IMPLIED EXCEPT FOR EXPLICIT LIMITED WRITTEN WARRANTIES ISSUED TO AND ACCEPTED BY BUILDING OWNERS IN ACCORDANCE WITH STO'S WARRANTY PROGRAMS WHICH ARE SUBJECT TO CHANGE FROM TIME TO TIME.** For the fullest, most current information on proper application, clean-up, mixing and other specifications and warranties, cautions and disclaimers, please refer to the Sto Corp. website, www.stocorp.com.

www.stocorp.com

StoTherm™ Rainscreen Window Jamb with StoTherm™ Trim (Window with Nailing Flange)

Date: October 2007

**Notes:**

1. Provide minimum 3/4" (19 mm) depth from back of insulation board to face of window frame for sufficient depth to install sealant.
2. Provide minimum 1/2" (13 mm) sealant joint width.
3. Secondary weather resistive barrier as required by local code, (e.g., Southern Building Code, minimum one layer Type 15 felt, waterproof building paper or equivalent).
4. Sto Drainage EPS Insulation Board minimum 1-1/2" (38 mm) thick.

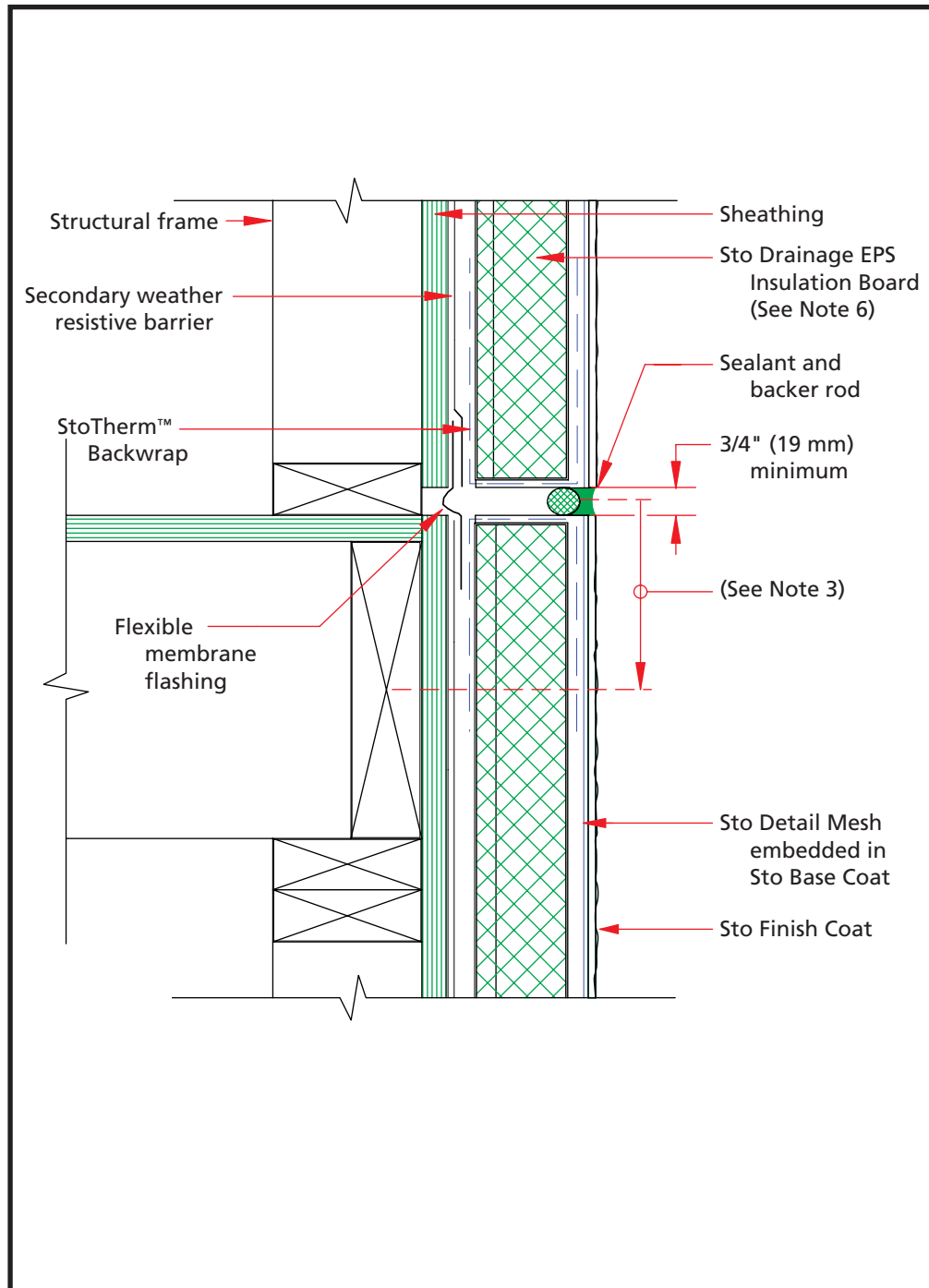
ATTENTION

Sto products are intended for use by qualified professional contractors, not consumers, as a component of a larger construction assembly as specified by a qualified design professional, general contractor or builder. They should be installed in accordance with those specifications and Sto's instructions. Sto Corp. disclaims all, and assumes no, liability for on-site inspections, for its products applied improperly, or by unqualified persons or entities, or as part of an improperly designed or constructed building, for the nonperformance of adjacent building components or assemblies, or for other construction activities beyond Sto's control. Improper use of Sto products or use as part of an improperly designed or constructed larger assembly or building may result in serious damage to Sto products, and to the structure of the building or its components. **STO CORP. DISCLAIMS ALL WARRANTIES EXPRESS OR IMPLIED EXCEPT FOR EXPLICIT LIMITED WRITTEN WARRANTIES ISSUED TO AND ACCEPTED BY BUILDING OWNERS IN ACCORDANCE WITH STO'S WARRANTY PROGRAMS WHICH ARE SUBJECT TO CHANGE FROM TIME TO TIME.** For the fullest, most current information on proper application, clean-up, mixing and other specifications and warranties, cautions and disclaimers, please refer to the Sto Corp. website, www.stocorp.com.

www.stocorp.com

StoTherm™ Rainscreen Expansion Joint at Floorline

Date: October 2007



Notes:

1. Similar joint required at attic floorline along gable end walls.
2. Gap wood sheathing edge and end joints in accordance with APA (American Plywood Association) recommendations. Gap at expansion joint the same dimension as the joint.
3. Locate expansion joint no lower than centerline of end joint.
4. Secondary weather resistive barrier as required by local code, (e.g., Southern Building Code, minimum one layer Type 15 felt, waterproof building paper or equivalent).
5. Secondary weather resistive barrier continuous at expansion joint.
6. Sto Drainage EPS Insulation Board minimum 1-1/2" (38 mm) thick.

ATTENTION

Sto products are intended for use by qualified professional contractors, not consumers, as a component of a larger construction assembly as specified by a qualified design professional, general contractor or builder. They should be installed in accordance with those specifications and Sto's instructions. Sto Corp. disclaims all, and assumes no, liability for on-site inspections, for its products applied improperly, or by unqualified persons or entities, or as part of an improperly designed or constructed building, for the nonperformance of adjacent building components or assemblies, or for other construction activities beyond Sto's control. Improper use of Sto products or use as part of an improperly designed or constructed larger assembly or building may result in serious damage to Sto products, and to the structure of the building or its components. **STO CORP. DISCLAIMS ALL WARRANTIES EXPRESS OR IMPLIED EXCEPT FOR EXPLICIT LIMITED WRITTEN WARRANTIES ISSUED TO AND ACCEPTED BY BUILDING OWNERS IN ACCORDANCE WITH STO'S WARRANTY PROGRAMS WHICH ARE SUBJECT TO CHANGE FROM TIME TO TIME.** For the fullest, most current information on proper application, clean-up, mixing and other specifications and warranties, cautions and disclaimers, please refer to the Sto Corp. website, www.stocorp.com.

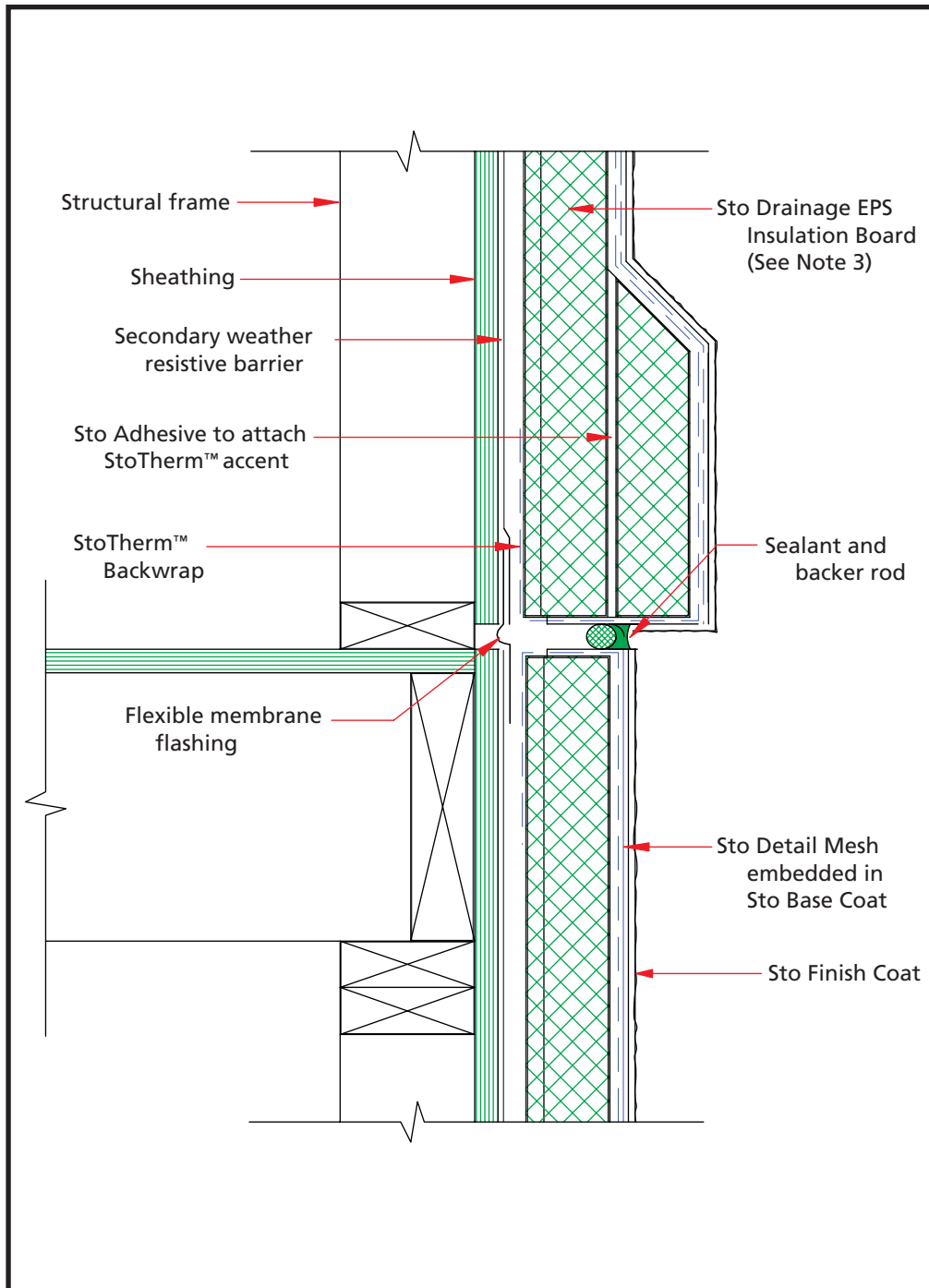
www.stocorp.com



StoTherm™ Rainscreen Expansion Joint at Floorline with StoTherm™ Accent Band

Detail No.: 9.31

Date: October 2007



Notes:

1. Provide minimum 3/4" (19 mm) sealant joint width.
2. Secondary weather resistive barrier as required by local code, (e.g., Southern Building Code, minimum one layer Type 15 felt, waterproof building paper or equivalent).
3. Sto Drainage EPS Insulation Board minimum 1-1/2" (38 mm) thick.
4. StoTherm trim slope minimum 1:2 (27 degrees).

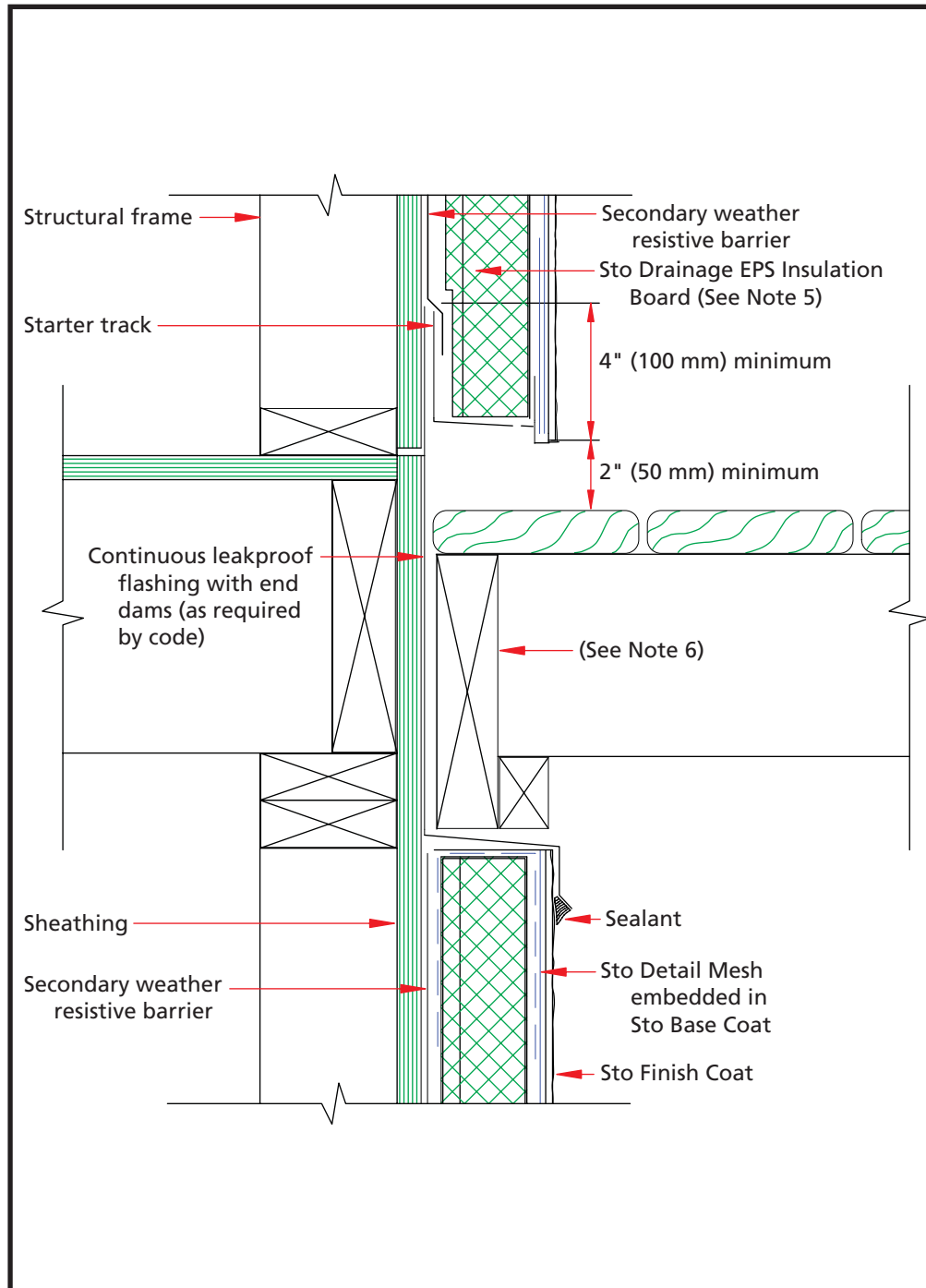
ATTENTION

Sto products are intended for use by qualified professional contractors, not consumers, as a component of a larger construction assembly as specified by a qualified design professional, general contractor or builder. They should be installed in accordance with those specifications and Sto's instructions. Sto Corp. disclaims all, and assumes no, liability for on-site inspections, for its products applied improperly, or by unqualified persons or entities, or as part of an improperly designed or constructed building, for the nonperformance of adjacent building components or assemblies, or for other construction activities beyond Sto's control. Improper use of Sto products or use as part of an improperly designed or constructed larger assembly or building may result in serious damage to Sto products, and to the structure of the building or its components. **STO CORP. DISCLAIMS ALL WARRANTIES EXPRESS OR IMPLIED EXCEPT FOR EXPLICIT LIMITED WRITTEN WARRANTIES ISSUED TO AND ACCEPTED BY BUILDING OWNERS IN ACCORDANCE WITH STO'S WARRANTY PROGRAMS WHICH ARE SUBJECT TO CHANGE FROM TIME TO TIME.** For the fullest, most current information on proper application, clean-up, mixing and other specifications and warranties, cautions and disclaimers, please refer to the Sto Corp. website, www.stocorp.com.

www.stocorp.com

StoTherm™ Rainscreen Wood Deck Connection

Date: October 2007



Notes:

1. Gap wood sheathing edge and end joints in accordance with APA (American Plywood Association) recommendations.
2. Seal penetrations through flashing where attached to framing.
3. Distance of StoTherm to deck varies with climate. Allow sufficient distance to prevent snow/ice and puddling water against system.
4. Secondary weather resistive barrier as required by local code, (e.g., Southern Building Code, minimum one layer Type 15 felt, waterproof building paper or equivalent).
5. Sto Drainage EPS Insulation Board minimum 1-1/2" (38 mm) thick.
6. Pressure treated wood (space from flashing or rout backside to provide drainage).

ATTENTION

Sto products are intended for use by qualified professional contractors, not consumers, as a component of a larger construction assembly as specified by a qualified design professional, general contractor or builder. They should be installed in accordance with those specifications and Sto's instructions. Sto Corp. disclaims all, and assumes no, liability for on-site inspections, for its products applied improperly, or by unqualified persons or entities, or as part of an improperly designed or constructed building, for the nonperformance of adjacent building components or assemblies, or for other construction activities beyond Sto's control. Improper use of Sto products or use as part of an improperly designed or constructed larger assembly or building may result in serious damage to Sto products, and to the structure of the building or its components. **STO CORP. DISCLAIMS ALL WARRANTIES EXPRESS OR IMPLIED EXCEPT FOR EXPLICIT LIMITED WRITTEN WARRANTIES ISSUED TO AND ACCEPTED BY BUILDING OWNERS IN ACCORDANCE WITH STO'S WARRANTY PROGRAMS WHICH ARE SUBJECT TO CHANGE FROM TIME TO TIME.** For the fullest, most current information on proper application, clean-up, mixing and other specifications and warranties, cautions and disclaimers, please refer to the Sto Corp. website, www.stocorp.com.

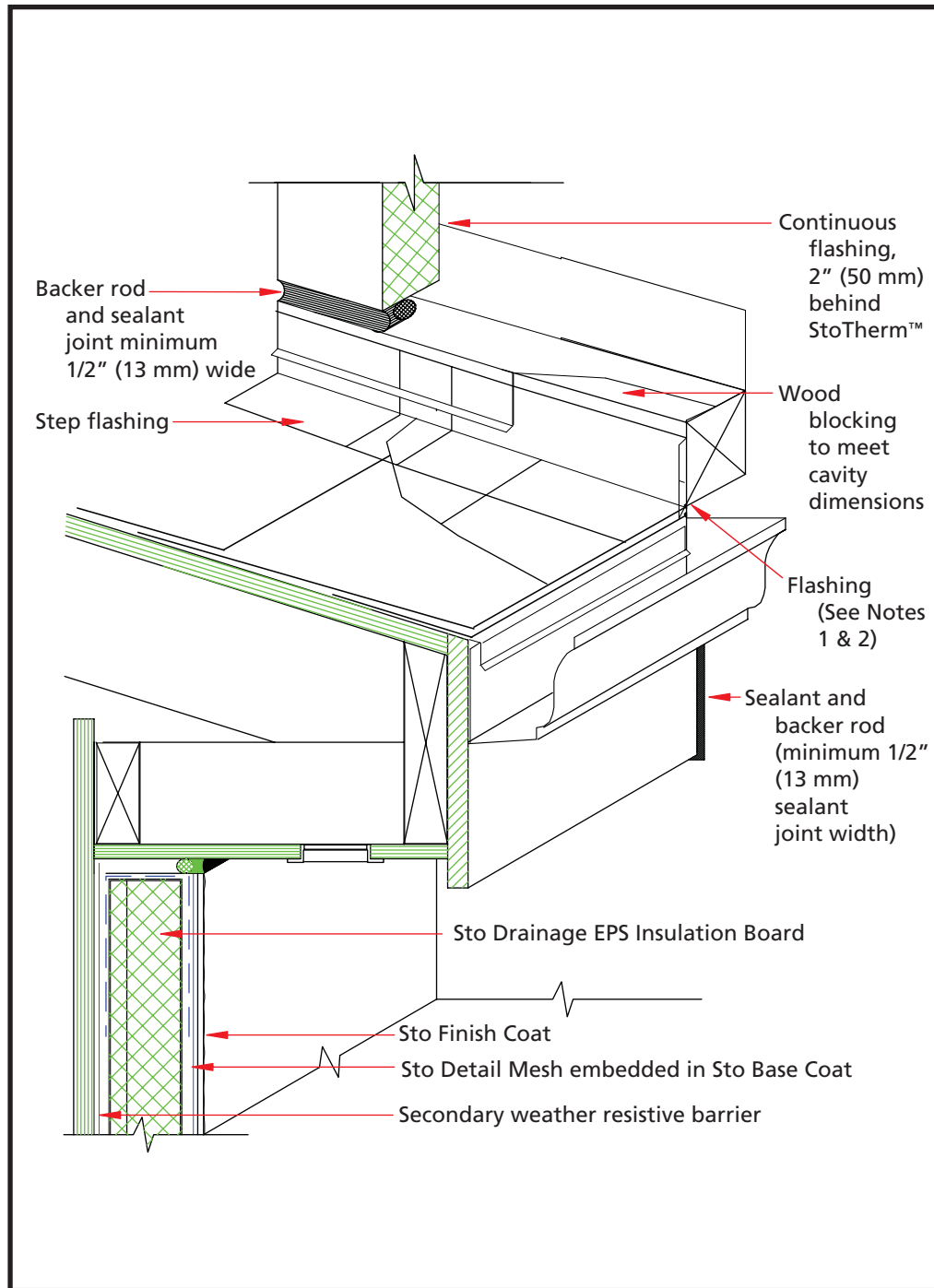
www.stocorp.com



StoTherm™ Rainscreen Alternate Roof/Wall Intersection Flashing System

Detail No.: 9.62

Date: October 2007



- Notes:**
1. Provide continuous leakproof flashing (as required by code) to divert water from entering into wall system.
 2. Seal StoTherm termination to the diverter flashing to prevent water from penetrating behind StoTherm.

ATTENTION

Sto products are intended for use by qualified professional contractors, not consumers, as a component of a larger construction assembly as specified by a qualified design professional, general contractor or builder. They should be installed in accordance with those specifications and Sto's instructions. Sto Corp. disclaims all, and assumes no, liability for on-site inspections, for its products applied improperly, or by unqualified persons or entities, or as part of an improperly designed or constructed building, for the nonperformance of adjacent building components or assemblies, or for other construction activities beyond Sto's control. Improper use of Sto products or use as part of an improperly designed or constructed larger assembly or building may result in serious damage to Sto products, and to the structure of the building or its components. **STO CORP. DISCLAIMS ALL WARRANTIES EXPRESS OR IMPLIED EXCEPT FOR EXPLICIT LIMITED WRITTEN WARRANTIES ISSUED TO AND ACCEPTED BY BUILDING OWNERS IN ACCORDANCE WITH STO'S WARRANTY PROGRAMS WHICH ARE SUBJECT TO CHANGE FROM TIME TO TIME.** For the fullest, most current information on proper application, clean-up, mixing and other specifications and warranties, cautions and disclaimers, please refer to the Sto Corp. website, www.stocorp.com.

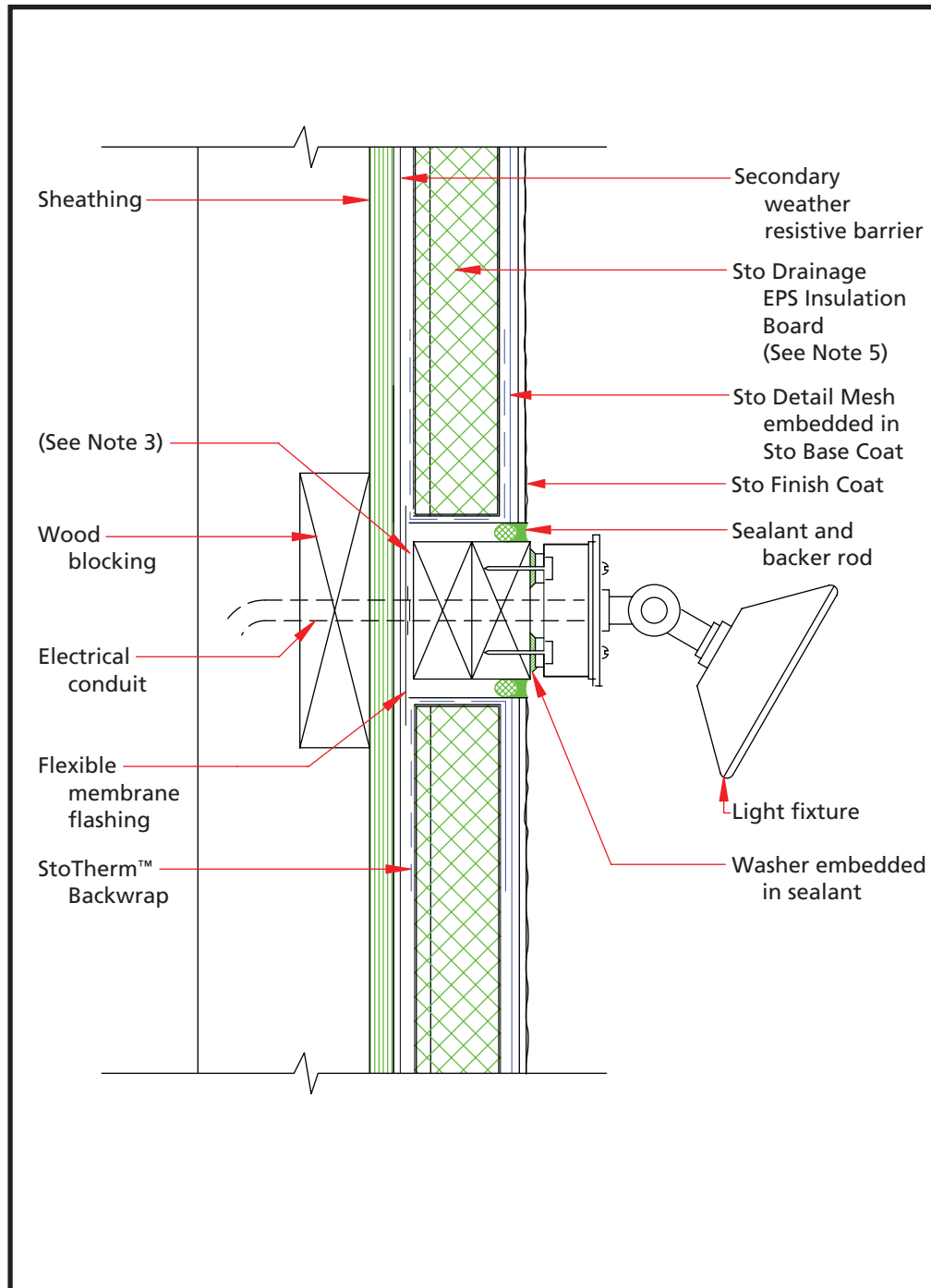
www.stocorp.com



StoTherm™ Rainscreen Surface Mount Fixture Penetration through the System

Detail No.: 9.71

Date: October 2007



Notes:

1. Provide minimum 1/2" (13 mm) sealant joint width.
2. Flexible membrane flashing to be installed around electrical conduit.
3. Pressure treated wood (space from flashing or route back side to provide drainage).
4. Secondary weather resistive barrier as required by local code, (e.g., Southern Building Code, minimum one layer Type 15 felt, waterproof building paper or equivalent).
5. Sto Drainage EPS Insulation Board minimum 1-1/2" (38 mm) thick.

ATTENTION

Sto products are intended for use by qualified professional contractors, not consumers, as a component of a larger construction assembly as specified by a qualified design professional, general contractor or builder. They should be installed in accordance with those specifications and Sto's instructions. Sto Corp. disclaims all, and assumes no, liability for on-site inspections, for its products applied improperly, or by unqualified persons or entities, or as part of an improperly designed or constructed building, for the nonperformance of adjacent building components or assemblies, or for other construction activities beyond Sto's control. Improper use of Sto products or use as part of an improperly designed or constructed larger assembly or building may result in serious damage to Sto products, and to the structure of the building or its components. **STO CORP. DISCLAIMS ALL WARRANTIES EXPRESS OR IMPLIED EXCEPT FOR EXPLICIT LIMITED WRITTEN WARRANTIES ISSUED TO AND ACCEPTED BY BUILDING OWNERS IN ACCORDANCE WITH STO'S WARRANTY PROGRAMS WHICH ARE SUBJECT TO CHANGE FROM TIME TO TIME.** For the fullest, most current information on proper application, clean-up, mixing and other specifications and warranties, cautions and disclaimers, please refer to the Sto Corp. website, www.stocorp.com.

www.stocorp.com