

Cement Board Stucco: StoQuik Silver NExT Ventilated (residential) - 16.XX Series

Details Index

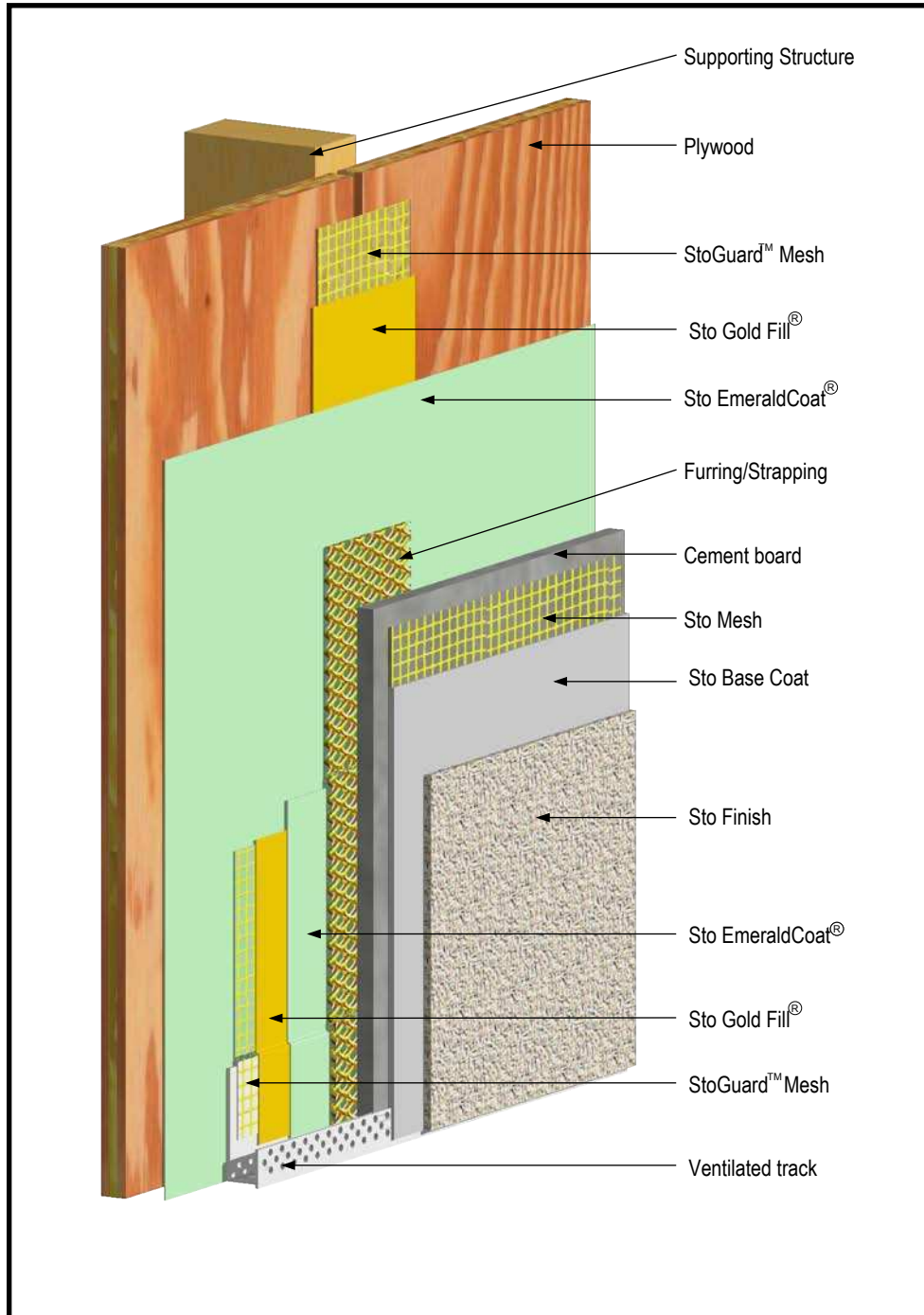
Description	Detail#
System Components over Wood Frame	16.00a
System Termination at Grade over Wood Frame	16.10a
Rough Opening Preparation over Wood Frame	16.20a
Head Flashing: Flanged Window over Wood Frame	16.23a
Sill Flashing: Flanged Window over Wood Frame	16.24a
Head Flashing: Brick Mold Window over Wood Frame	16.25a
Sill Pan Flashing: Brick Mold Window over Wood Frame	16.26a
Deck Connection over Wood Frame	16.32a
Termination Below Soffit	16.42a
Floor Line over Wood Frame	16.50a
Termination at Roof Rake over Wood Frame	16.62a
Termination at Cricket	16.63a
Surface Mount Penetration over Wood Frame	16.73a1
Substrate Mounted Electrical Box	16.73a2
Downspout Attachment over Wood Frame	16.74a
Service Penetration	16.76a

StoQuik™ Silver Next - Ventilated

System Components over Wood Frame

Detail No.:16.00a

Date: January 2008



Notes:

- 1] Building codes vary with respect to the type of water-resistive barrier and the number of layers required over wood-based sheathing. Check the applicable code requirement to ensure compliance.
- 2] Refer to sto specification QS 300EV for complete information on design requirements, installation and accessories.

ATTENTION

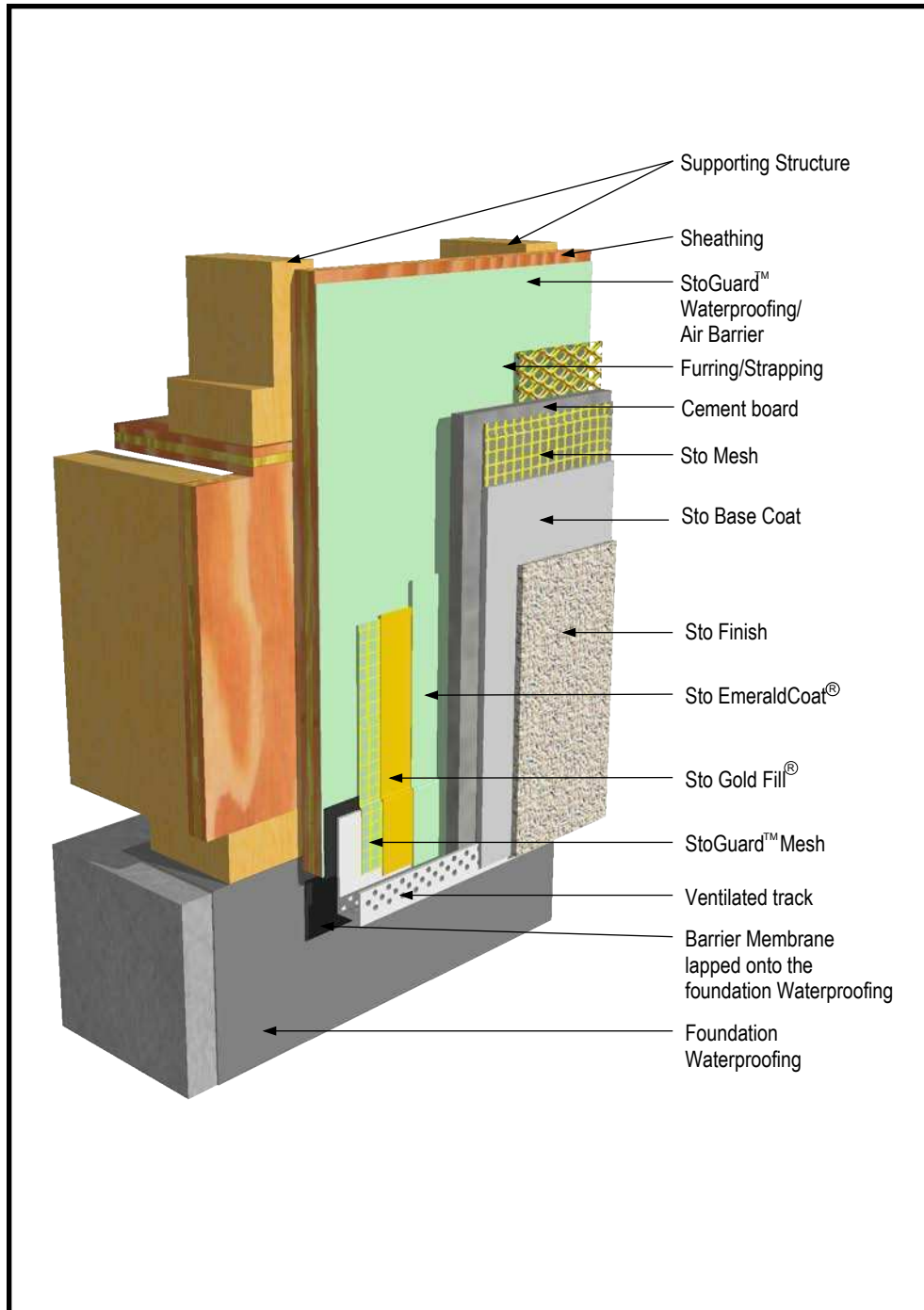
Sto products are intended for use by qualified professional contractors, not consumers, as a component of a larger construction assembly as specified by a qualified design professional, general contractor or builder. They should be installed in accordance with those specifications and Sto's instructions. Sto Corp. disclaims all, and assumes no, liability for on-site inspections, for its products applied improperly, or by unqualified persons or entities, or as part of an improperly designed or constructed building, for the nonperformance of adjacent building components or assemblies, or for other construction activities beyond Sto's control. Improper use of Sto products or use as part of an improperly designed or constructed larger assembly or building may result in serious damage to Sto products, and to the structure of the building or its components. **STO CORP. DISCLAIMS ALL WARRANTIES EXPRESS OR IMPLIED EXCEPT FOR EXPLICIT LIMITED WRITTEN WARRANTIES ISSUED TO AND ACCEPTED BY BUILDING OWNERS IN ACCORDANCE WITH STO'S WARRANTY PROGRAMS WHICH ARE SUBJECT TO CHANGE FROM TIME TO TIME.** For the fullest, most current information on proper application, clean-up, mixing and other specifications and warranties, cautions and disclaimers, please refer to the Sto Corp. website, www.stocorp.com.

StoQuik™ Silver Next - Ventilated

System Termination at Grade over Wood Frame

Detail No.:16.10a

Date: January 2008



Notes:

- 1] Provide minimum 2 inches (51 mm) clearance above pavers or other finished walking surfaces, minimum 4 inches (102 mm) above earth grade. Increase distance above grade for snow regions.
- 2] Building codes vary with respect to the type of water-resistant barrier and the number of layers required over wood-based sheathing. Check the applicable code requirement to ensure compliance.
- 3] Refer to sto specification QS 300EV for complete information on design requirements, installation and accessories.

ATTENTION

Sto products are intended for use by qualified professional contractors, not consumers, as a component of a larger construction assembly as specified by a qualified design professional, general contractor or builder. They should be installed in accordance with those specifications and Sto's instructions. Sto Corp. disclaims all, and assumes no, liability for on-site inspections, for its products applied improperly, or by unqualified persons or entities, or as part of an improperly designed or constructed building, for the nonperformance of adjacent building components or assemblies, or for other construction activities beyond Sto's control. Improper use of Sto products or use as part of an improperly designed or constructed larger assembly or building may result in serious damage to Sto products, and to the structure of the building or its components. STO CORP. DISCLAIMS ALL WARRANTIES EXPRESS OR IMPLIED EXCEPT FOR EXPLICIT LIMITED WRITTEN WARRANTIES ISSUED TO AND ACCEPTED BY BUILDING OWNERS IN ACCORDANCE WITH STO'S WARRANTY PROGRAMS WHICH ARE SUBJECT TO CHANGE FROM TIME TO TIME. For the fullest, most current information on proper application, clean-up, mixing and other specifications and warranties, cautions and disclaimers, please refer to the Sto Corp. website, www.stocorp.com.

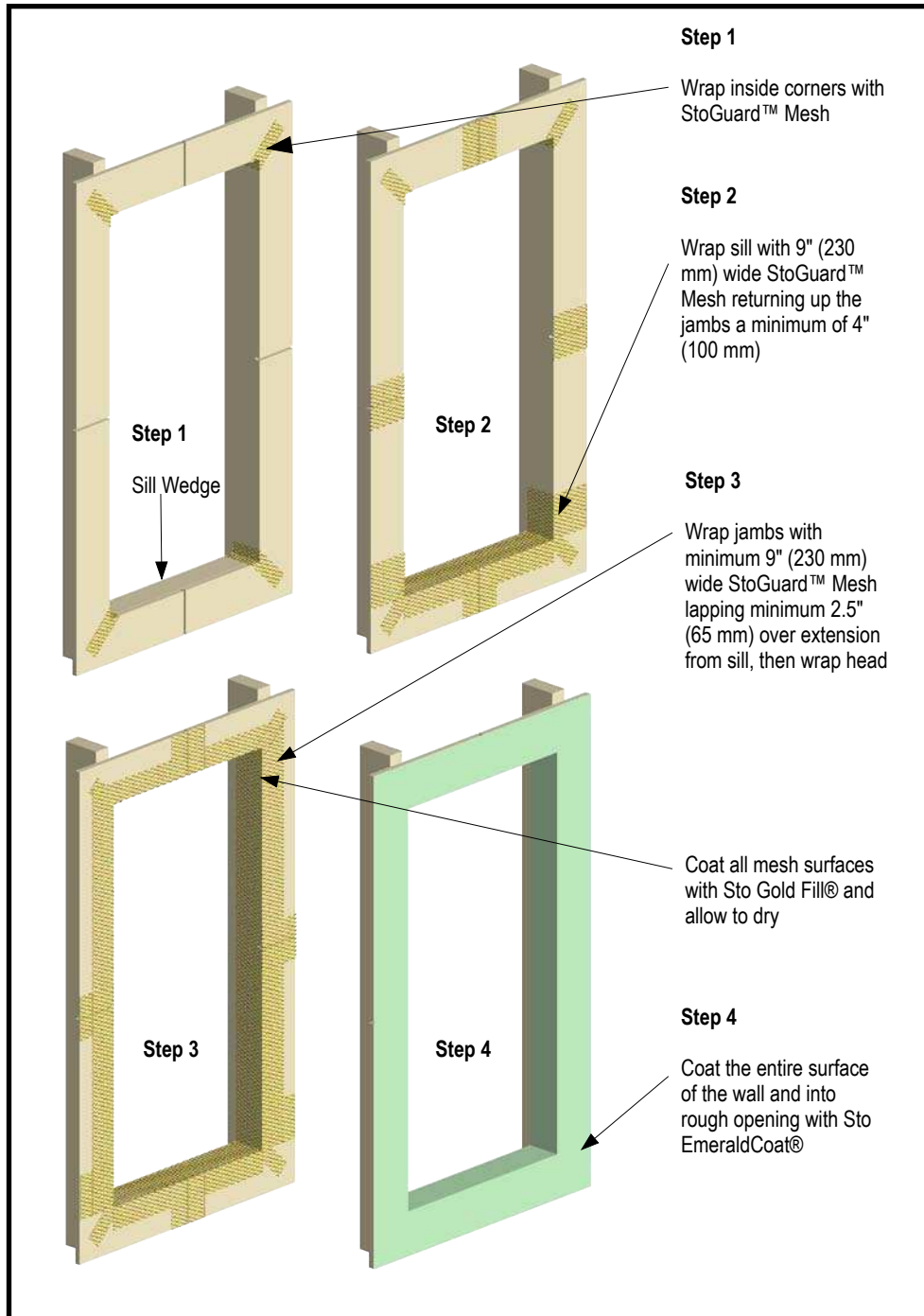


StoQuik™ Silver Next - Ventilated

Rough Opening Preparation over Wood Frame

Detail No.:16.20a

Date: January 2008



Notes:

- 1] Prepare opening prior to the installation of the window or mechanical equipment.
- 2] The complete installation of window or mechanical equipment should include an air seal between the object and the StoGuard System protection inbound of the outer sealant joint.
- 3] Building codes vary with respect to type of water-resistive barrier and the number of layers required over wood-based sheathing. Check the applicable code requirement to ensure compliance.
- 4] Refer to Sto Specification QS 300EV for complete information on design requirements, installation and accessories.

ATTENTION

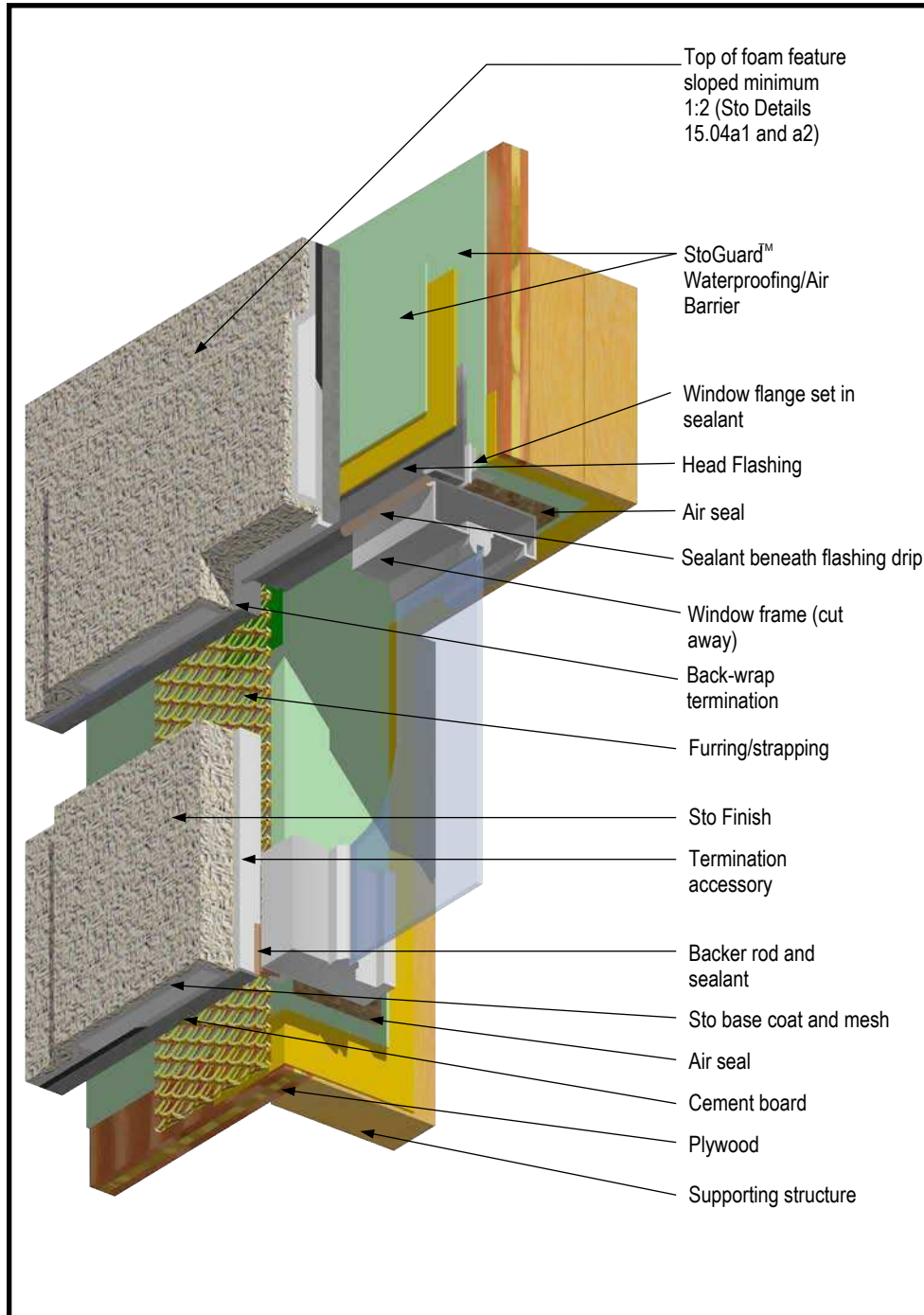
Sto products are intended for use by qualified professional contractors, not consumers, as a component of a larger construction assembly as specified by a qualified design professional, general contractor or builder. They should be installed in accordance with those specifications and Sto's instructions. Sto Corp. disclaims all, and assumes no, liability for on-site inspections, for its products applied improperly, or by unqualified persons or entities, or as part of an improperly designed or constructed building, for the nonperformance of adjacent building components or assemblies, or for other construction activities beyond Sto's control. Improper use of Sto products or use as part of an improperly designed or constructed larger assembly or building may result in serious damage to Sto products, and to the structure of the building or its components. **STO CORP. DISCLAIMS ALL WARRANTIES EXPRESS OR IMPLIED EXCEPT FOR EXPLICIT LIMITED WRITTEN WARRANTIES ISSUED TO AND ACCEPTED BY BUILDING OWNERS IN ACCORDANCE WITH STO'S WARRANTY PROGRAMS WHICH ARE SUBJECT TO CHANGE FROM TIME TO TIME.** For the fullest, most current information on proper application, clean-up, mixing and other specifications and warranties, cautions and disclaimers, please refer to the Sto Corp. website, www.stocorp.com.

StoQuik™ Silver Next - Ventilated

Head Flashing: Flanged Window over Wood Frame

Detail No.:16.23a

Date: February 2008



Notes:

- 1] Prepare rough opening as illustrated in Sto Detail 16.20a
- 2] Provide flashing over window as mandated by code.
- 3] Coordinate StoGuard™ installation sequence with window installer and other related trades.
- 4] Install window so that adequate space for drainage is maintained between nail fin and StoGuard™.
- 5] The complete installation of window or mechanical equipment should include an air seal connection between the object and StoGuard Waterproofing/Air barrier. Provide the air seal connection inbound of the outer perimeter sealant joint.
- 6] Building codes vary with respect to type of waterresistive barrier and the number of layers required over wood-based sheathing. Check the applicable code requirement to ensure compliance.
- 7] Refer to Sto Specification QS 300EV for complete information on design requirements, installation and accessories

ATTENTION

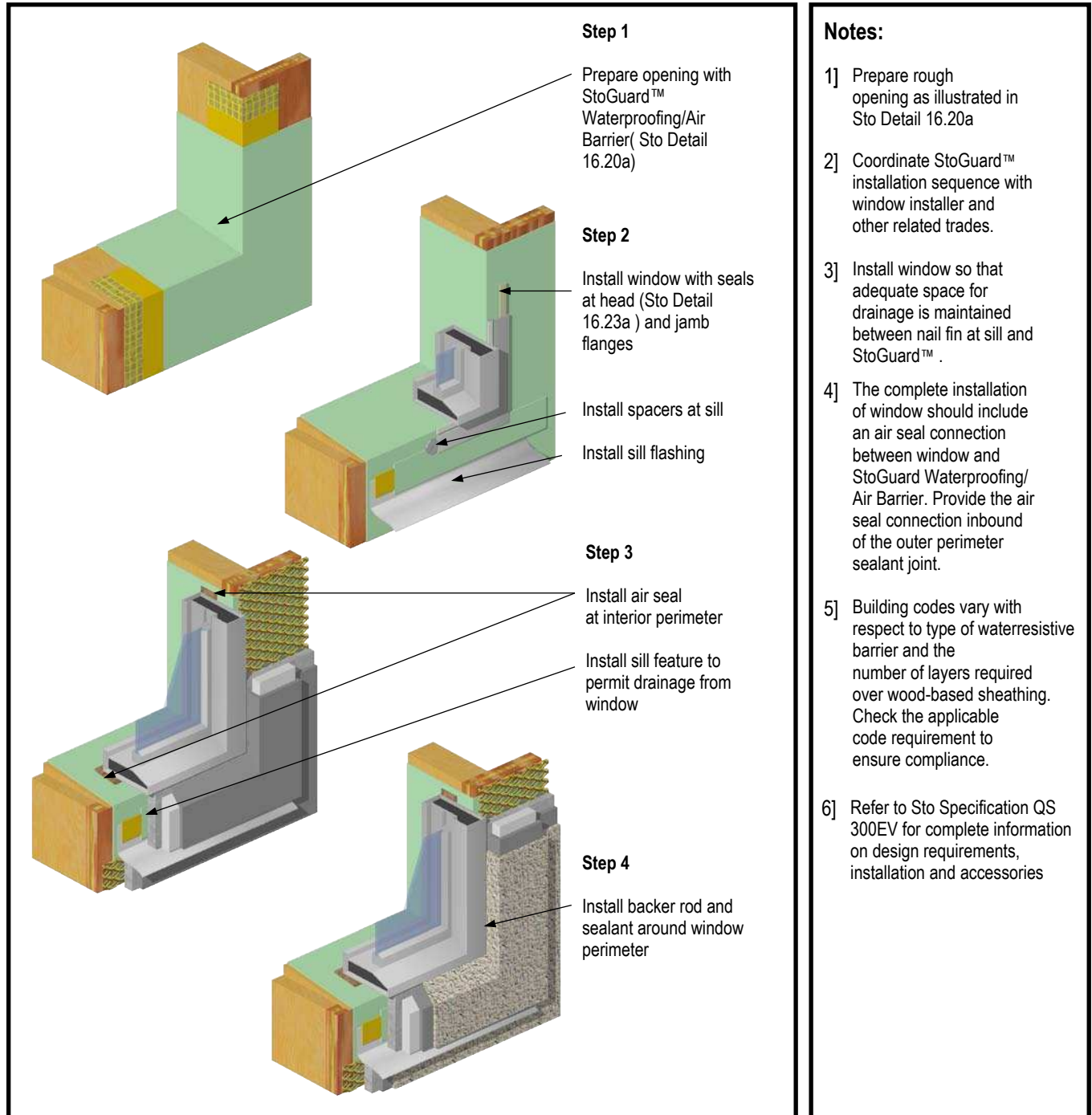
Sto products are intended for use by qualified professional contractors, not consumers, as a component of a larger construction assembly as specified by a qualified design professional, general contractor or builder. They should be installed in accordance with those specifications and Sto's instructions. Sto Corp. disclaims all, and assumes no, liability for on-site inspections, for its products applied improperly, or by unqualified persons or entities, or as part of an improperly designed or constructed building, for the nonperformance of adjacent building components or assemblies, or for other construction activities beyond Sto's control. Improper use of Sto products or use as part of an improperly designed or constructed larger assembly or building may result in serious damage to Sto products, and to the structure of the building or its components. **STO CORP. DISCLAIMS ALL WARRANTIES EXPRESS OR IMPLIED EXCEPT FOR EXPLICIT LIMITED WRITTEN WARRANTIES ISSUED TO AND ACCEPTED BY BUILDING OWNERS IN ACCORDANCE WITH STO'S WARRANTY PROGRAMS WHICH ARE SUBJECT TO CHANGE FROM TIME TO TIME.** For the fullest, most current information on proper application, clean-up, mixing and other specifications and warranties, cautions and disclaimers, please refer to the Sto Corp. website, www.stocorp.com.

StoQuik™ Silver Next - Ventilated

Sill Flashing: Flanged Window over Wood Frame

Detail No.:16.24a

Date: February 2008



ATTENTION

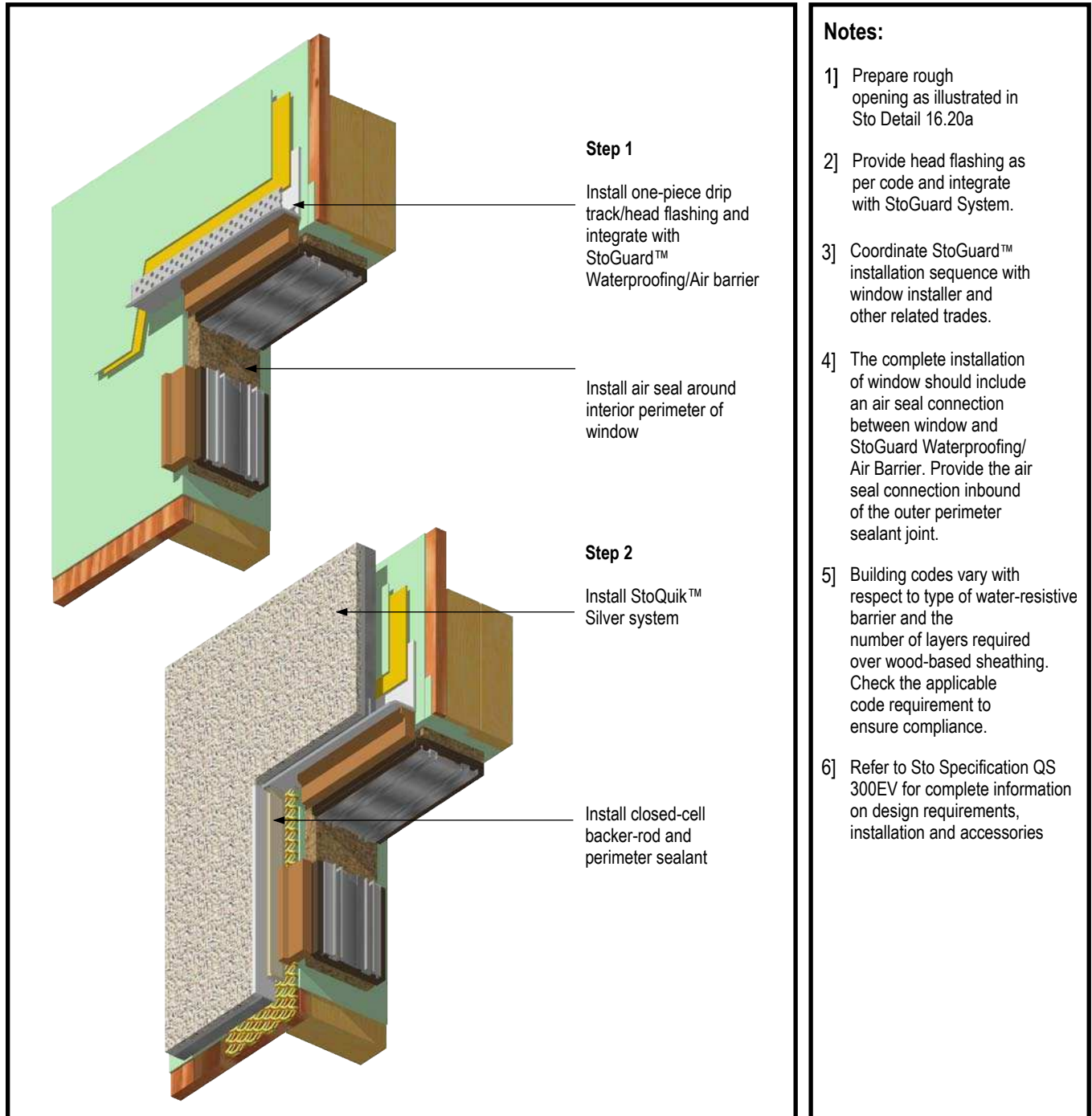
Sto products are intended for use by qualified professional contractors, not consumers, as a component of a larger construction assembly as specified by a qualified design professional, general contractor or builder. They should be installed in accordance with those specifications and Sto's instructions. Sto Corp. disclaims all, and assumes no, liability for on-site inspections, for its products applied improperly, or by unqualified persons or entities, or as part of an improperly designed or constructed building, for the nonperformance of adjacent building components or assemblies, or for other construction activities beyond Sto's control. Improper use of Sto products or use as part of an improperly designed or constructed larger assembly or building may result in serious damage to Sto products, and to the structure of the building or its components. **STO CORP. DISCLAIMS ALL WARRANTIES EXPRESS OR IMPLIED EXCEPT FOR EXPLICIT LIMITED WRITTEN WARRANTIES ISSUED TO AND ACCEPTED BY BUILDING OWNERS IN ACCORDANCE WITH STO'S WARRANTY PROGRAMS WHICH ARE SUBJECT TO CHANGE FROM TIME TO TIME.** For the fullest, most current information on proper application, clean-up, mixing and other specifications and warranties, cautions and disclaimers, please refer to the Sto Corp. website, www.stocorp.com.

StoQuik™ Silver Next - Ventilated

Head Flashing: Brick Mold Window over Wood Frame

Detail No.:16.25a

Date: February 2008



ATTENTION

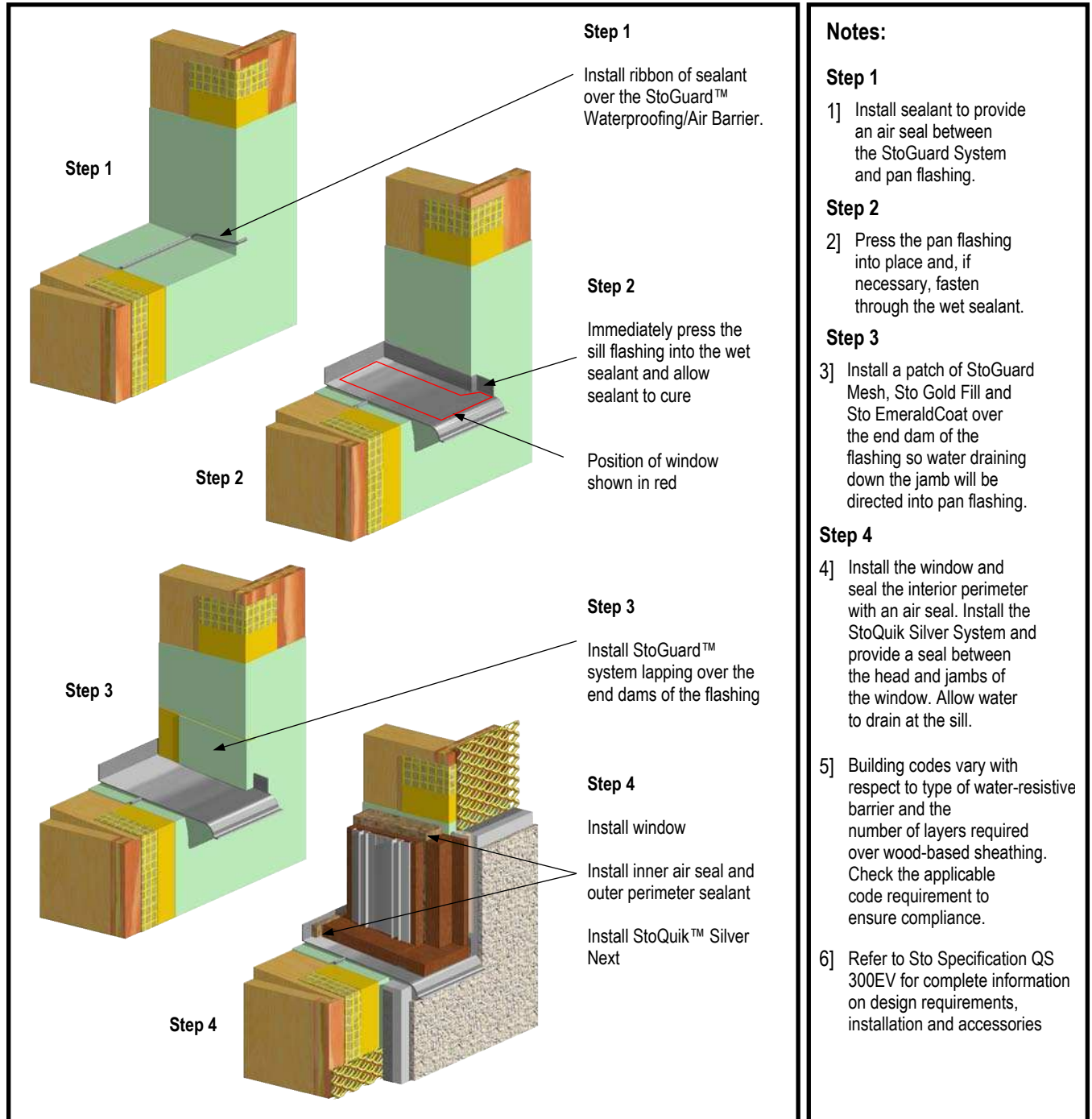
Sto products are intended for use by qualified professional contractors, not consumers, as a component of a larger construction assembly as specified by a qualified design professional, general contractor or builder. They should be installed in accordance with those specifications and Sto's instructions. Sto Corp. disclaims all, and assumes no, liability for on-site inspections, for its products applied improperly, or by unqualified persons or entities, or as part of an improperly designed or constructed building, for the nonperformance of adjacent building components or assemblies, or for other construction activities beyond Sto's control. Improper use of Sto products or use as part of an improperly designed or constructed larger assembly or building may result in serious damage to Sto products, and to the structure of the building or its components. STO CORP. DISCLAIMS ALL WARRANTIES EXPRESS OR IMPLIED EXCEPT FOR EXPLICIT LIMITED WRITTEN WARRANTIES ISSUED TO AND ACCEPTED BY BUILDING OWNERS IN ACCORDANCE WITH STO'S WARRANTY PROGRAMS WHICH ARE SUBJECT TO CHANGE FROM TIME TO TIME. For the fullest, most current information on proper application, clean-up, mixing and other specifications and warranties, cautions and disclaimers, please refer to the Sto Corp. website, www.stocorp.com.

StoQuik™ Silver Next - Ventilated

Sill Pan Flashing: Brick Mold Window over Wood Frame

Detail No.:16.26a

Date: February 2008



ATTENTION

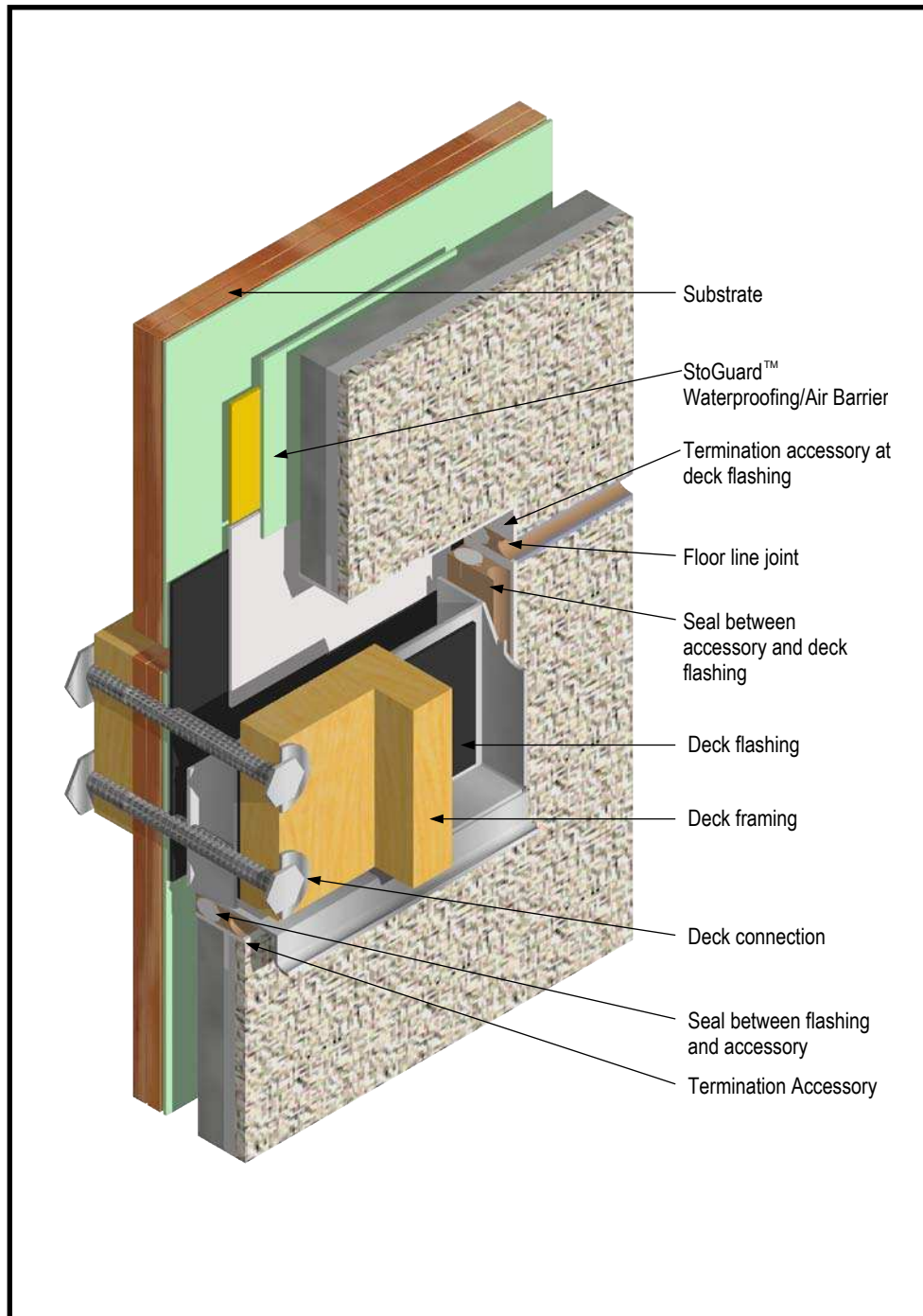
Sto products are intended for use by qualified professional contractors, not consumers, as a component of a larger construction assembly as specified by a qualified design professional, general contractor or builder. They should be installed in accordance with those specifications and Sto's instructions. Sto Corp. disclaims all, and assumes no, liability for on-site inspections, for its products applied improperly, or by unqualified persons or entities, or as part of an improperly designed or constructed building, for the nonperformance of adjacent building components or assemblies, or for other construction activities beyond Sto's control. Improper use of Sto products or use as part of an improperly designed or constructed larger assembly or building may result in serious damage to Sto products, and to the structure of the building or its components. STO CORP. DISCLAIMS ALL WARRANTIES EXPRESS OR IMPLIED EXCEPT FOR EXPLICIT LIMITED WRITTEN WARRANTIES ISSUED TO AND ACCEPTED BY BUILDING OWNERS IN ACCORDANCE WITH STO'S WARRANTY PROGRAMS WHICH ARE SUBJECT TO CHANGE FROM TIME TO TIME. For the fullest, most current information on proper application, clean-up, mixing and other specifications and warranties, cautions and disclaimers, please refer to the Sto Corp. website, www.stocorp.com.

StoQuik™ Silver Next - Ventilated

Deck Connection over Wood Frame

Detail No.:16.32a

Date: January 2008



Notes:

- 1] Exercise caution to prevent water entry into the wall assembly through proper flashing and sealing techniques at the deck attachment, behind the deck, and around the deck perimeter.
- 2] Building codes vary with respect to type of water-resistive barrier and the number of layers required over wood-based sheathing. Check the applicable code requirement to ensure compliance.
- 3] Refer to Sto Specification QS 300EV for complete information on design requirements, installation and accessories

ATTENTION

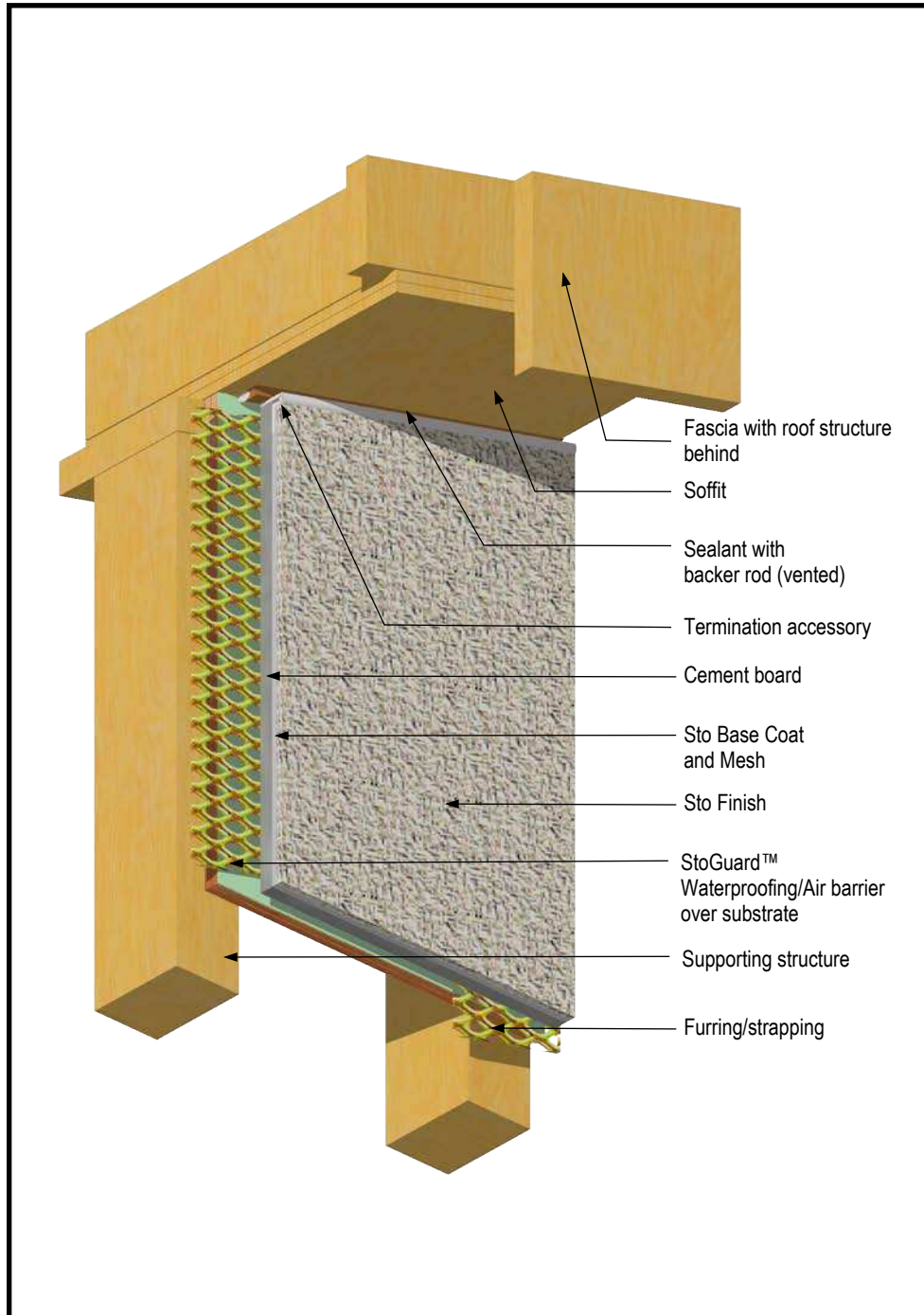
Sto products are intended for use by qualified professional contractors, not consumers, as a component of a larger construction assembly as specified by a qualified design professional, general contractor or builder. They should be installed in accordance with those specifications and Sto's instructions. Sto Corp. disclaims all, and assumes no, liability for on-site inspections, for its products applied improperly, or by unqualified persons or entities, or as part of an improperly designed or constructed building, for the nonperformance of adjacent building components or assemblies, or for other construction activities beyond Sto's control. Improper use of Sto products or use as part of an improperly designed or constructed larger assembly or building may result in serious damage to Sto products, and to the structure of the building or its components. STO CORP. DISCLAIMS ALL WARRANTIES EXPRESS OR IMPLIED EXCEPT FOR EXPLICIT LIMITED WRITTEN WARRANTIES ISSUED TO AND ACCEPTED BY BUILDING OWNERS IN ACCORDANCE WITH STO'S WARRANTY PROGRAMS WHICH ARE SUBJECT TO CHANGE FROM TIME TO TIME. For the fullest, most current information on proper application, clean-up, mixing and other specifications and warranties, cautions and disclaimers, please refer to the Sto Corp. website, www.stocorp.com.

StoQuik™ Silver Next - Ventilated

Termination Below Soffit

Detail No.:16.42a

Date: February 2008



Notes:

- 1] Building codes vary with respect to type of water-resistive barrier and the number of layers required over wood-based sheathing. Check the applicable code requirement to ensure compliance.
- 2] Refer to Sto Specification QS 300EV for complete information on design requirements, installation and accessories

ATTENTION

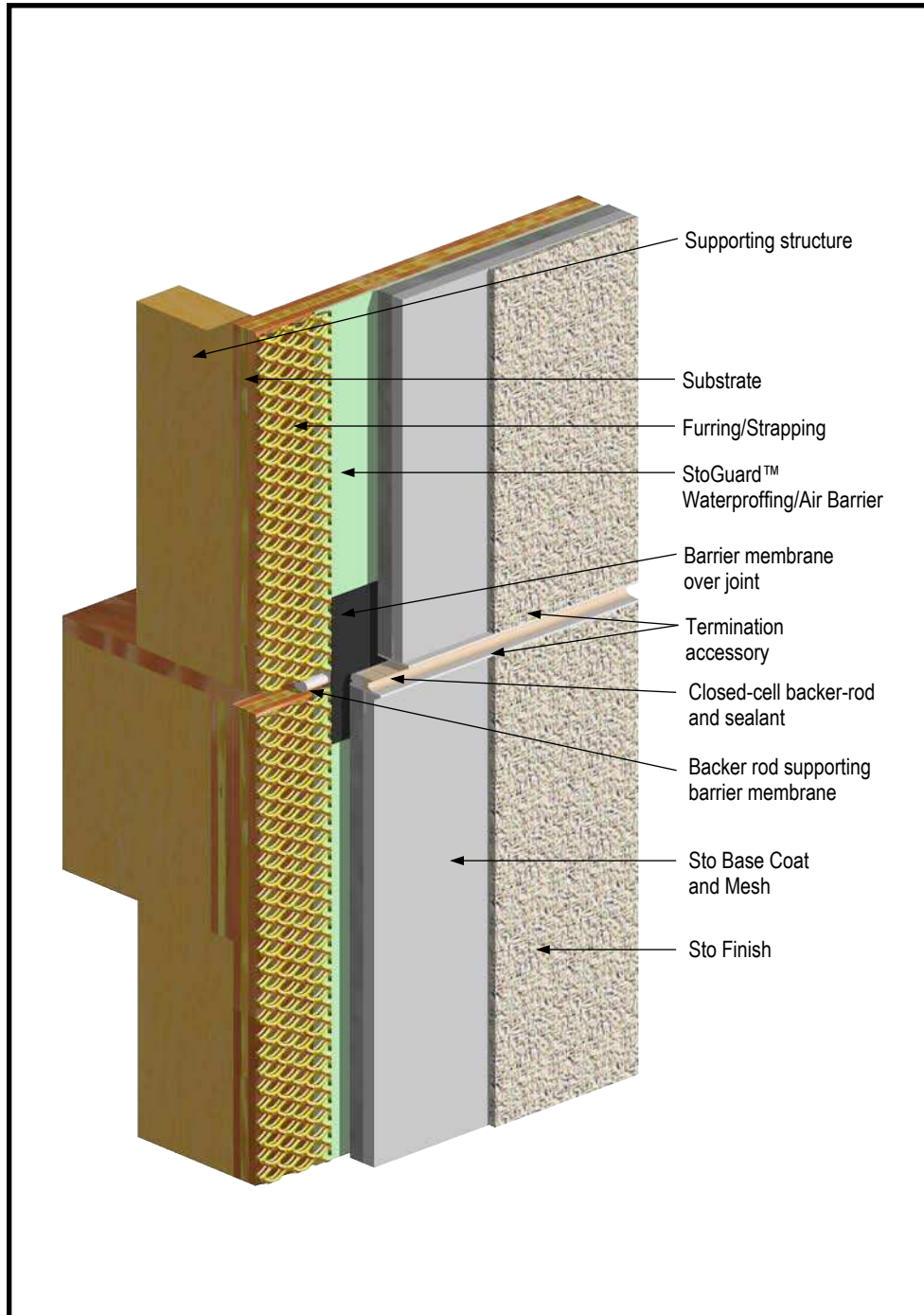
Sto products are intended for use by qualified professional contractors, not consumers, as a component of a larger construction assembly as specified by a qualified design professional, general contractor or builder. They should be installed in accordance with those specifications and Sto's instructions. Sto Corp. disclaims all, and assumes no, liability for on-site inspections, for its products applied improperly, or by unqualified persons or entities, or as part of an improperly designed or constructed building, for the nonperformance of adjacent building components or assemblies, or for other construction activities beyond Sto's control. Improper use of Sto products or use as part of an improperly designed or constructed larger assembly or building may result in serious damage to Sto products, and to the structure of the building or its components. STO CORP. DISCLAIMS ALL WARRANTIES EXPRESS OR IMPLIED EXCEPT FOR EXPLICIT LIMITED WRITTEN WARRANTIES ISSUED TO AND ACCEPTED BY BUILDING OWNERS IN ACCORDANCE WITH STO'S WARRANTY PROGRAMS WHICH ARE SUBJECT TO CHANGE FROM TIME TO TIME. For the fullest, most current information on proper application, clean-up, mixing and other specifications and warranties, cautions and disclaimers, please refer to the Sto Corp. website, www.stocorp.com.

StoQuik™ Silver Next - Ventilated

Floor Line Joint over Wood Frame

Detail No.:16.50a

Date: February 2008



Notes:

- 1] Joint required at floor lines in wood frame construction.
- 2] Gap wood sheathing edge and end joints in accordance with APA (American Plywood Association) recommendations.
- 3] Maintain waterproofing and air barrier continuity with a barrier membrane across the sheathing joint. Support the barrier membrane with a backer rod.
- 4] Building codes vary with respect to type of water-resistive barrier and the number of layers required over wood-based sheathing. Check the applicable code requirement to ensure compliance.
- 5] Refer to Sto Specification QS 300EV for complete information on design requirements, installation and accessories.

ATTENTION

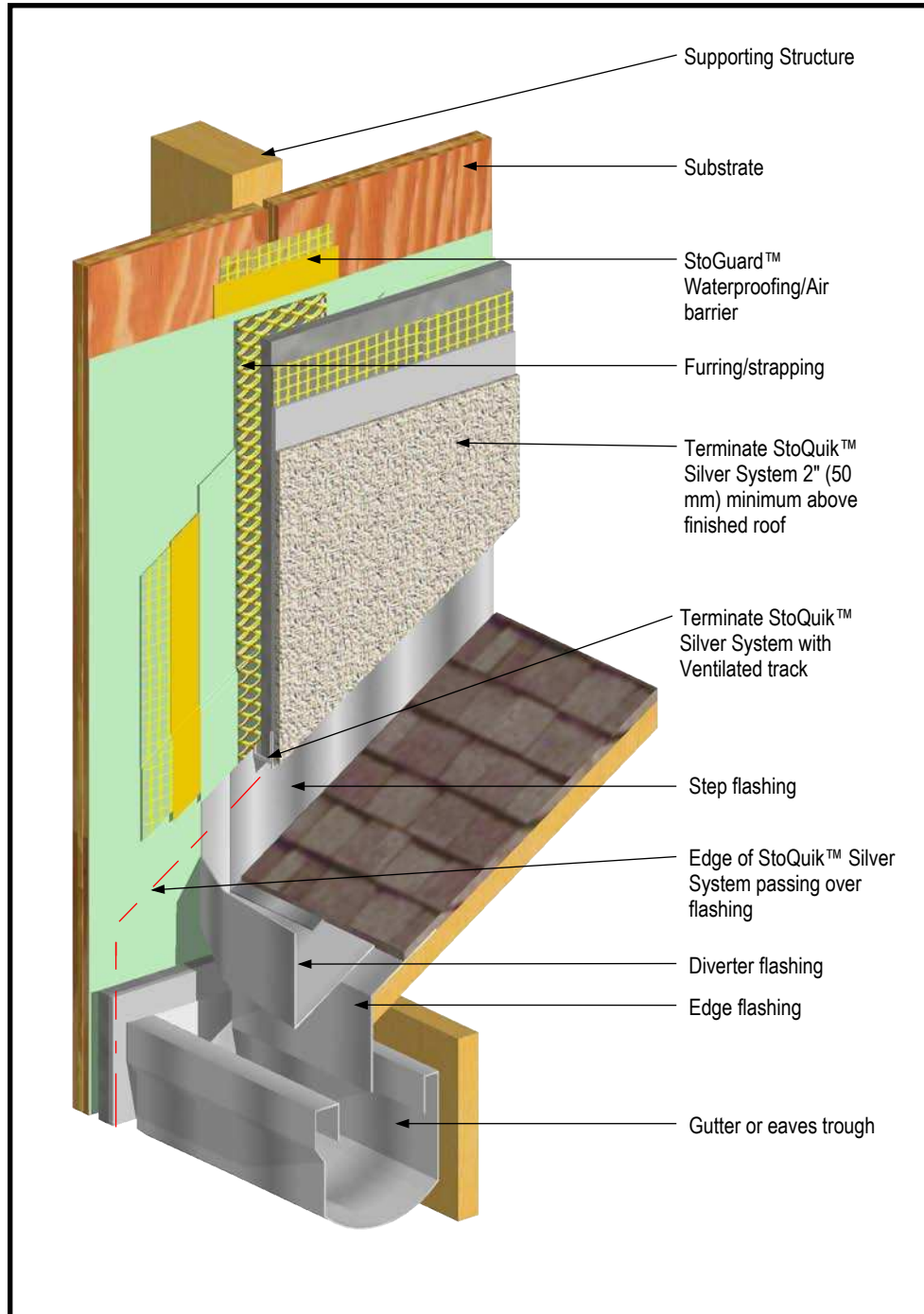
Sto products are intended for use by qualified professional contractors, not consumers, as a component of a larger construction assembly as specified by a qualified design professional, general contractor or builder. They should be installed in accordance with those specifications and Sto's instructions. Sto Corp. disclaims all, and assumes no, liability for on-site inspections, for its products applied improperly, or by unqualified persons or entities, or as part of an improperly designed or constructed building, for the nonperformance of adjacent building components or assemblies, or for other construction activities beyond Sto's control. Improper use of Sto products or use as part of an improperly designed or constructed larger assembly or building may result in serious damage to Sto products, and to the structure of the building or its components. **STO CORP. DISCLAIMS ALL WARRANTIES EXPRESS OR IMPLIED EXCEPT FOR EXPLICIT LIMITED WRITTEN WARRANTIES ISSUED TO AND ACCEPTED BY BUILDING OWNERS IN ACCORDANCE WITH STO'S WARRANTY PROGRAMS WHICH ARE SUBJECT TO CHANGE FROM TIME TO TIME.** For the fullest, most current information on proper application, clean-up, mixing and other specifications and warranties, cautions and disclaimers, please refer to the Sto Corp. website, www.stocorp.com.

StoQuik™ Silver Next - Ventilated

Termination at Roof Rake over Wood Frame

Detail No.:16.62a

Date: February 2008



Notes:

- 1] Coordinate installation of StoGuard System and roofing.
- 2] Install StoGuard System on wall prior to installation of roofing.
- 3] After roof installation, integrate step and diverter flashing into StoGuard System to ensure drainage onto the roof.
- 4] Terminate StoQuik Silver System 2" (50 mm) minimum above finished roof.
- 5] Install gutter or eaves trough after the installation of the StoQuik Silver System to ensure adequate clearance.
- 6] Building codes vary with respect to type of water-resistive barrier and the number of layers required over wood-based sheathing. Check the applicable code requirement to ensure compliance.
- 7] Refer to Sto Specification QS 300EV for complete information on design requirements, installation and accessories.

ATTENTION

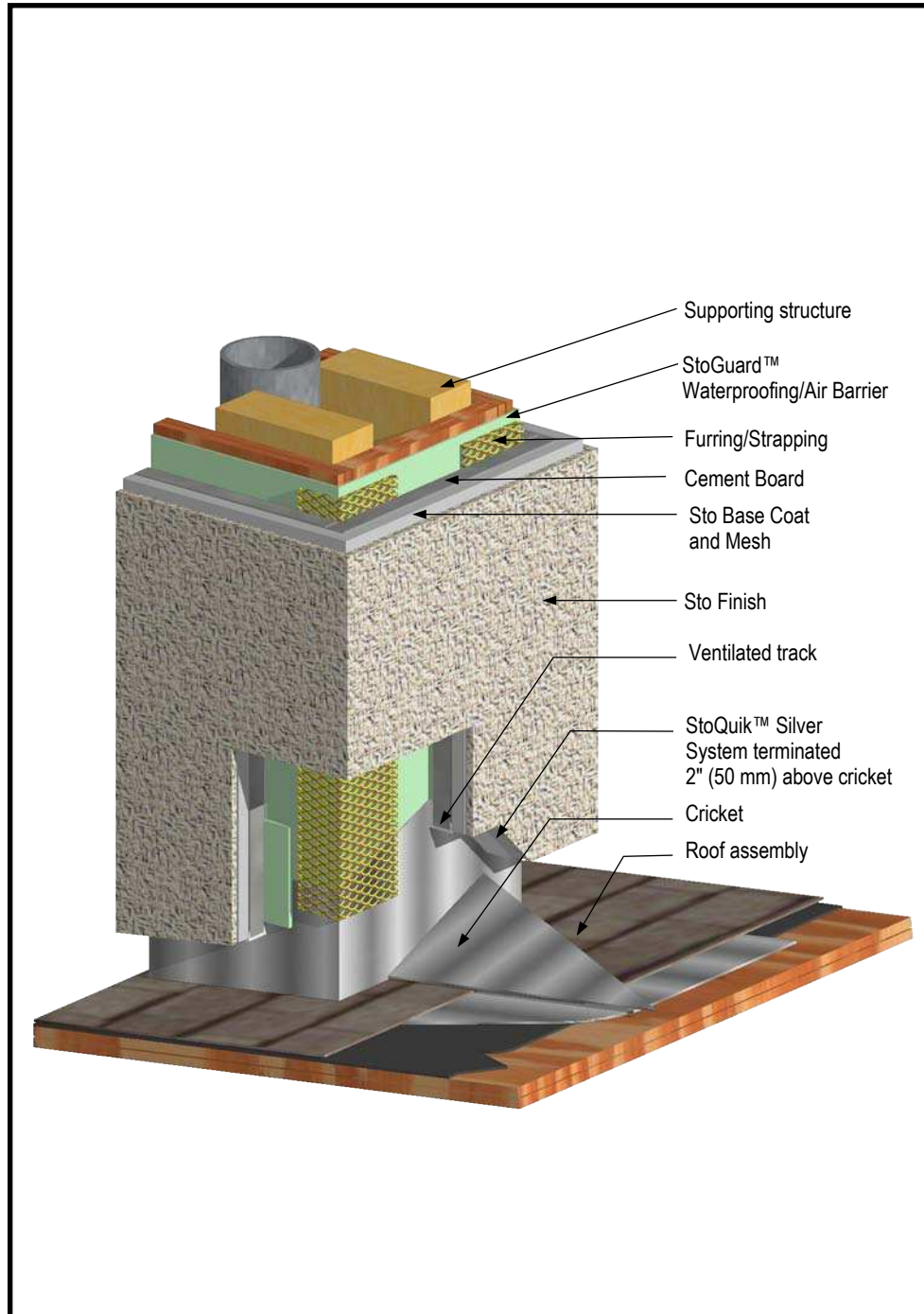
Sto products are intended for use by qualified professional contractors, not consumers, as a component of a larger construction assembly as specified by a qualified design professional, general contractor or builder. They should be installed in accordance with those specifications and Sto's instructions. Sto Corp. disclaims all, and assumes no, liability for on-site inspections, for its products applied improperly, or by unqualified persons or entities, or as part of an improperly designed or constructed building, for the nonperformance of adjacent building components or assemblies, or for other construction activities beyond Sto's control. Improper use of Sto products or use as part of an improperly designed or constructed larger assembly or building may result in serious damage to Sto products, and to the structure of the building or its components. **STO CORP. DISCLAIMS ALL WARRANTIES EXPRESS OR IMPLIED EXCEPT FOR EXPLICIT LIMITED WRITTEN WARRANTIES ISSUED TO AND ACCEPTED BY BUILDING OWNERS IN ACCORDANCE WITH STO'S WARRANTY PROGRAMS WHICH ARE SUBJECT TO CHANGE FROM TIME TO TIME.** For the fullest, most current information on proper application, clean-up, mixing and other specifications and warranties, cautions and disclaimers, please refer to the Sto Corp. website, www.stocorp.com.

StoQuik™ Silver Next - Ventilated

Termination at Cricket

Detail No.:16.63a

Date: February 2008



Notes:

- 1] Provide StoQuik Silver System overlap of the step flashing 2" (50 mm) above the cricket and finished roof. The space permits re-roofing at a future date and will help prevent debris from accumulating between the roof and the StoQuik Silver System.
- 2] Building codes vary with respect to type of water-resistive barrier and the number of layers required over wood-based sheathing. Check the applicable code requirement to ensure compliance.
- 3] Refer to Sto Specification QS 300EV for complete information on design requirements, installation and accessories.

ATTENTION

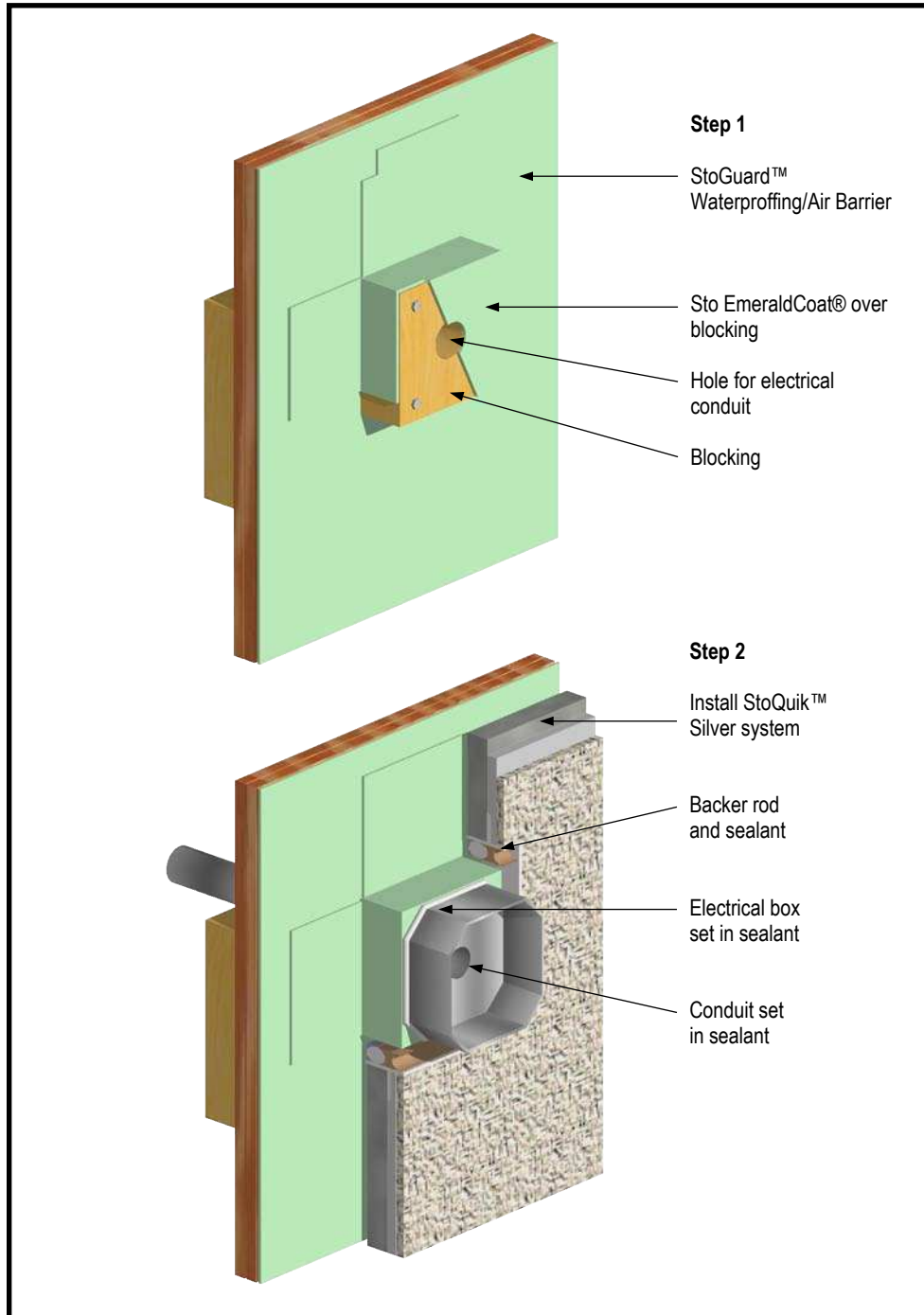
Sto products are intended for use by qualified professional contractors, not consumers, as a component of a larger construction assembly as specified by a qualified design professional, general contractor or builder. They should be installed in accordance with those specifications and Sto's instructions. Sto Corp. disclaims all, and assumes no, liability for on-site inspections, for its products applied improperly, or by unqualified persons or entities, or as part of an improperly designed or constructed building, for the nonperformance of adjacent building components or assemblies, or for other construction activities beyond Sto's control. Improper use of Sto products or use as part of an improperly designed or constructed larger assembly or building may result in serious damage to Sto products, and to the structure of the building or its components. STO CORP. DISCLAIMS ALL WARRANTIES EXPRESS OR IMPLIED EXCEPT FOR EXPLICIT LIMITED WRITTEN WARRANTIES ISSUED TO AND ACCEPTED BY BUILDING OWNERS IN ACCORDANCE WITH STO'S WARRANTY PROGRAMS WHICH ARE SUBJECT TO CHANGE FROM TIME TO TIME. For the fullest, most current information on proper application, clean-up, mixing and other specifications and warranties, cautions and disclaimers, please refer to the Sto Corp. website, www.stocorp.com.

StoQuik™ Silver Next - Ventilated

Surface Mount Penetration over Wood Frame

Detail No.:16.73a1

Date: February 2008



Notes:

- 1] Install StoGuard System and mount blocking (if needed for build-out) where fixture is to be installed. Coat blocking to substrate and install StoGuard System over the entire wall surface.
- 2] Drill hole through blocking/sheathing for conduit. Line hole with neutral cure sealant when installing conduit.
- 3] Install bead of sealant on back of electrical box and fasten box over blocking/sheathing.
- 4] Coat exposed Sto EmeraldCoat® with exterior paint or match cuts to electrical box configuration and protect with sealant
- 5] Building codes vary with respect to type of water-resistant barrier and the number of layers required over wood-based sheathing. Check the applicable code requirement to ensure compliance.
- 6] Refer to Sto Specification QS 300EV for complete information on design requirements, installation and accessories.

ATTENTION

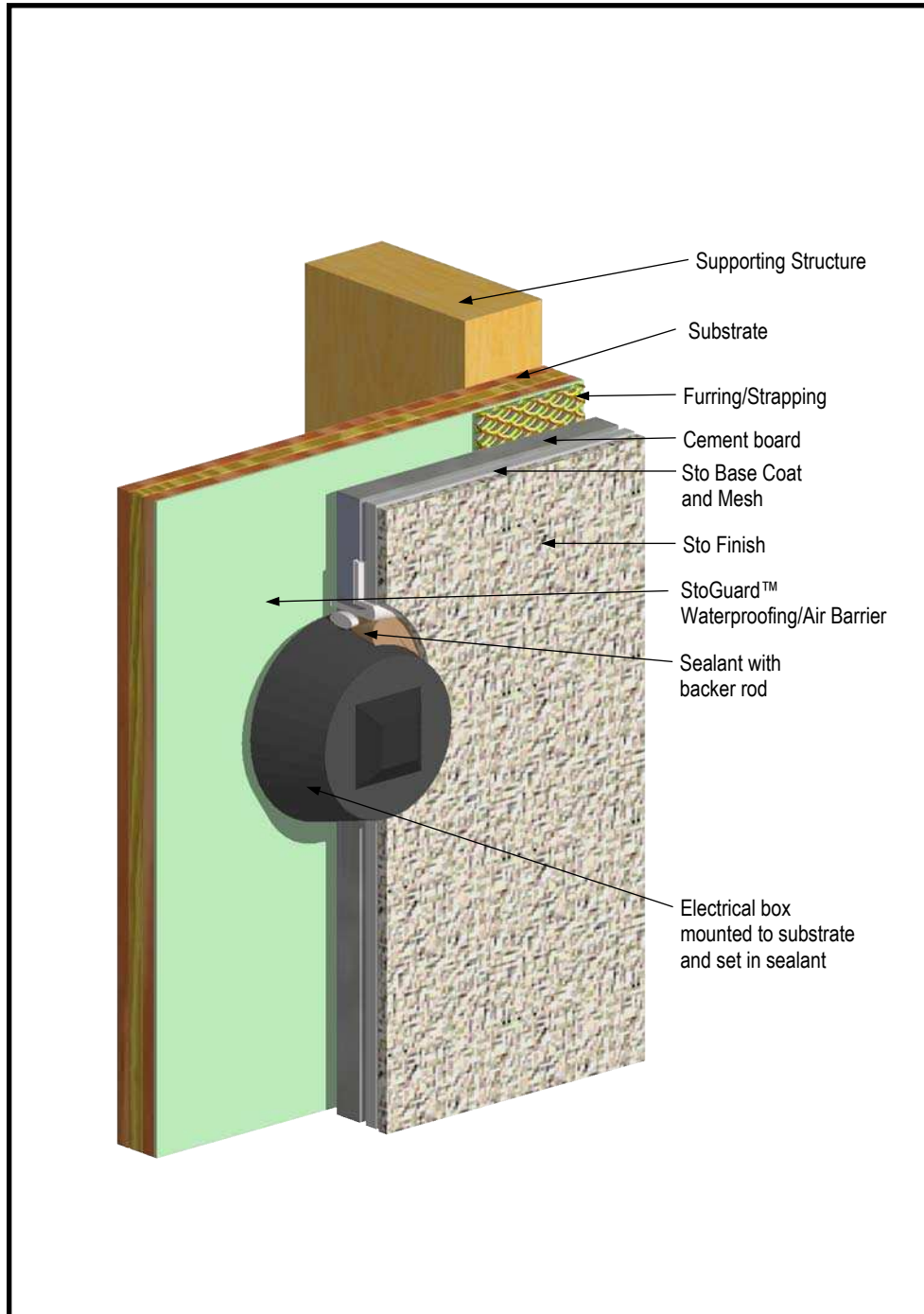
Sto products are intended for use by qualified professional contractors, not consumers, as a component of a larger construction assembly as specified by a qualified design professional, general contractor or builder. They should be installed in accordance with those specifications and Sto's instructions. Sto Corp. disclaims all, and assumes no, liability for on-site inspections, for its products applied improperly, or by unqualified persons or entities, or as part of an improperly designed or constructed building, for the nonperformance of adjacent building components or assemblies, or for other construction activities beyond Sto's control. Improper use of Sto products or use as part of an improperly designed or constructed larger assembly or building may result in serious damage to Sto products, and to the structure of the building or its components. STO CORP. DISCLAIMS ALL WARRANTIES EXPRESS OR IMPLIED EXCEPT FOR EXPLICIT LIMITED WRITTEN WARRANTIES ISSUED TO AND ACCEPTED BY BUILDING OWNERS IN ACCORDANCE WITH STO'S WARRANTY PROGRAMS WHICH ARE SUBJECT TO CHANGE FROM TIME TO TIME. For the fullest, most current information on proper application, clean-up, mixing and other specifications and warranties, cautions and disclaimers, please refer to the Sto Corp. website, www.stocorp.com.

StoQuik™ Silver Next - Ventilated

Substrate Mounted Electrical Box

Detail No.:16.73a2

Date: January 2008



Notes:

- 1] The electrical system is not part of the StoQuik Silver System. Care must be taken to ensure that water does not penetrate into the wall assembly through the electrical box.
- 2] Building codes vary with respect to type of water-resistive barrier and the number of layers required over wood-based sheathing. Check the applicable code requirement to ensure compliance.
- 3] Refer to Sto Specification QS 300EV for complete information on design requirements, installation and accessories.

ATTENTION

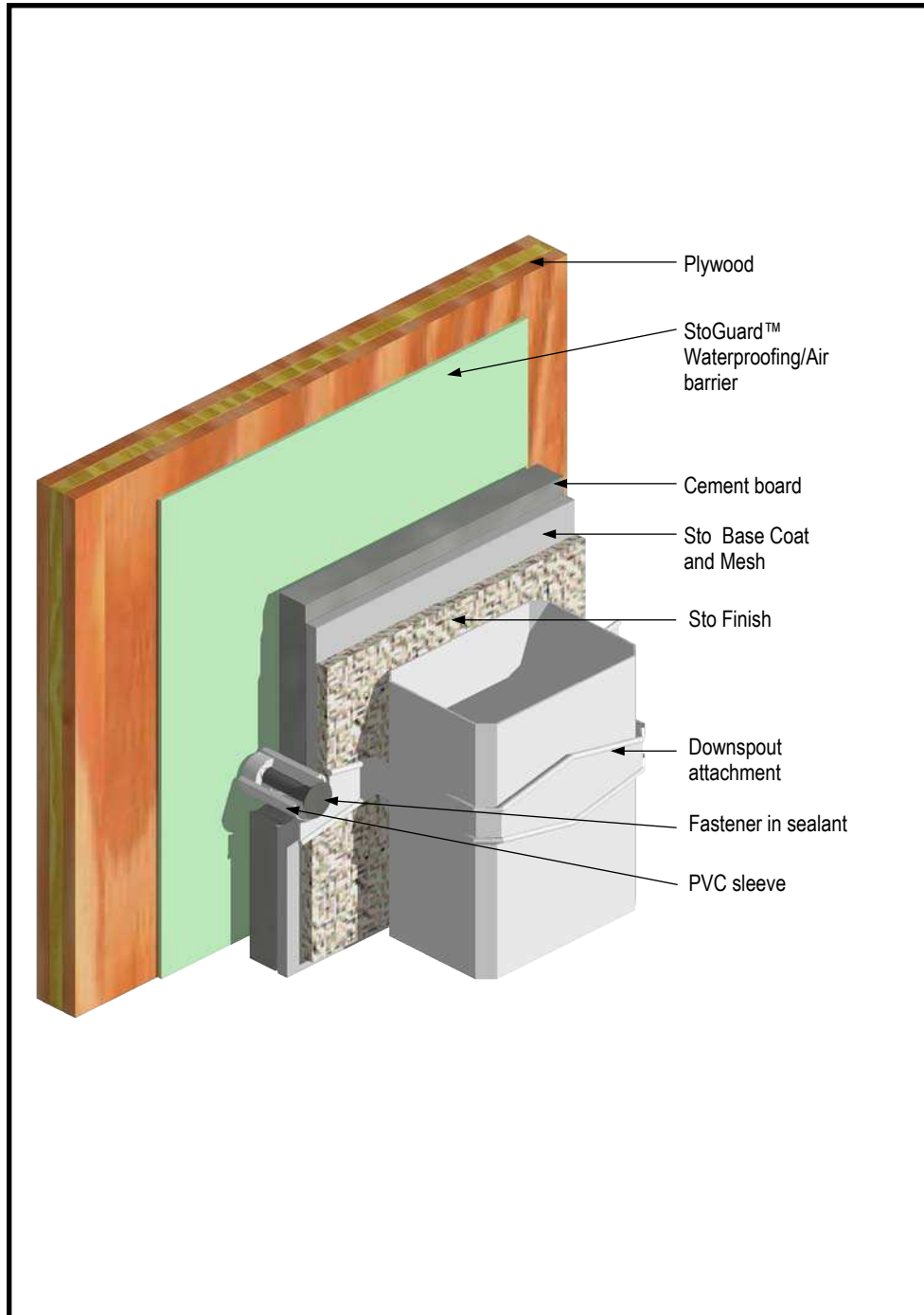
Sto products are intended for use by qualified professional contractors, not consumers, as a component of a larger construction assembly as specified by a qualified design professional, general contractor or builder. They should be installed in accordance with those specifications and Sto's instructions. Sto Corp. disclaims all, and assumes no, liability for on-site inspections, for its products applied improperly, or by unqualified persons or entities, or as part of an improperly designed or constructed building, for the nonperformance of adjacent building components or assemblies, or for other construction activities beyond Sto's control. Improper use of Sto products or use as part of an improperly designed or constructed larger assembly or building may result in serious damage to Sto products, and to the structure of the building or its components. STO CORP. DISCLAIMS ALL WARRANTIES EXPRESS OR IMPLIED EXCEPT FOR EXPLICIT LIMITED WRITTEN WARRANTIES ISSUED TO AND ACCEPTED BY BUILDING OWNERS IN ACCORDANCE WITH STO'S WARRANTY PROGRAMS WHICH ARE SUBJECT TO CHANGE FROM TIME TO TIME. For the fullest, most current information on proper application, clean-up, mixing and other specifications and warranties, cautions and disclaimers, please refer to the Sto Corp. website, www.stocorp.com.

StoQuik™ Silver Next - Ventilated

Downspout Attachment over Wood Frame

Detail No.:16.74a

Date: January 2008



Notes:

- 1] Mark the location of the fastener on the finish.
- 2] Drill hole through StoQuik Silver System to sheathing.
- 3] Line hole with sealant and insert PVC sleeve 1/8 (3 mm) longer than the thickness of the StoQuik Silver System. Tool the excess sealant around the PVC sleeve.
- 4] Fill the PVC sleeve with sealant and immediately fasten downspout strap with screw through the wet sealant into the substrate. Tool sealant around screw head and remove excess.
- 5] Building codes vary with respect to type of water-resistant barrier and the number of layers required over wood-based sheathing. Check the applicable code requirement to ensure compliance.
- 6] Refer to Sto Specification QS 300EV for complete information on design requirements, installation and accessories.

ATTENTION

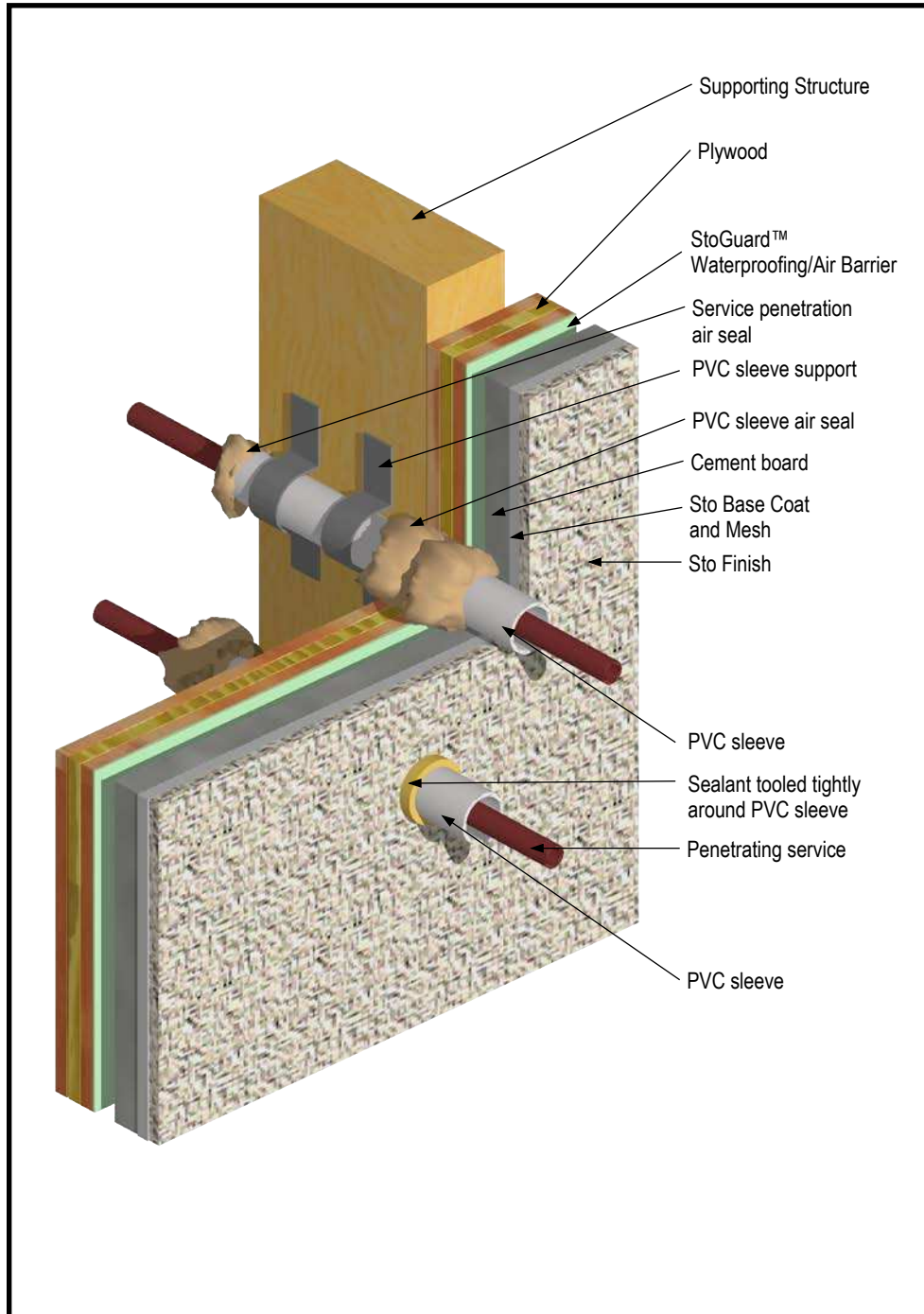
Sto products are intended for use by qualified professional contractors, not consumers, as a component of a larger construction assembly as specified by a qualified design professional, general contractor or builder. They should be installed in accordance with those specifications and Sto's instructions. Sto Corp. disclaims all, and assumes no, liability for on-site inspections, for its products applied improperly, or by unqualified persons or entities, or as part of an improperly designed or constructed building, for the nonperformance of adjacent building components or assemblies, or for other construction activities beyond Sto's control. Improper use of Sto products or use as part of an improperly designed or constructed larger assembly or building may result in serious damage to Sto products, and to the structure of the building or its components. STO CORP. DISCLAIMS ALL WARRANTIES EXPRESS OR IMPLIED EXCEPT FOR EXPLICIT LIMITED WRITTEN WARRANTIES ISSUED TO AND ACCEPTED BY BUILDING OWNERS IN ACCORDANCE WITH STO'S WARRANTY PROGRAMS WHICH ARE SUBJECT TO CHANGE FROM TIME TO TIME. For the fullest, most current information on proper application, clean-up, mixing and other specifications and warranties, cautions and disclaimers, please refer to the Sto Corp. website, www.stocorp.com.

StoQuik™ Silver Next - Ventilated

Service Penetration

Detail No.:16.76a

Date: February 2008



Notes:

- 1] The service penetration, such as air conditioning condenser lines, is normally installed after the StoQuik Silver System
- 2] Drill hole with a 10° downward slope through the wall assembly. Size the hole slightly larger than the PVC sleeve sized to accommodate the service penetration. Position hole adjacent to a structural support if necessary.
- 3] Line the hole with sealant and push through the PVC sleeve. Tool the extra sealant tightly against the PVC sleeve. Secure the pipe to the supporting structure.
- 4] Install the service connections through the PVC sleeve and air seal.
- 5] Building codes vary with respect to type of water-resistant barrier and the number of layers required over wood-based sheathing. Check the applicable code requirement to ensure compliance.
- 6] Refer to Sto Specification QS 300EV for complete information on design requirements, installation and accessories.

ATTENTION

Sto products are intended for use by qualified professional contractors, not consumers, as a component of a larger construction assembly as specified by a qualified design professional, general contractor or builder. They should be installed in accordance with those specifications and Sto's instructions. Sto Corp. disclaims all, and assumes no, liability for on-site inspections, for its products applied improperly, or by unqualified persons or entities, or as part of an improperly designed or constructed building, for the nonperformance of adjacent building components or assemblies, or for other construction activities beyond Sto's control. Improper use of Sto products or use as part of an improperly designed or constructed larger assembly or building may result in serious damage to Sto products, and to the structure of the building or its components. **STO CORP. DISCLAIMS ALL WARRANTIES EXPRESS OR IMPLIED EXCEPT FOR EXPLICIT LIMITED WRITTEN WARRANTIES ISSUED TO AND ACCEPTED BY BUILDING OWNERS IN ACCORDANCE WITH STO'S WARRANTY PROGRAMS WHICH ARE SUBJECT TO CHANGE FROM TIME TO TIME.** For the fullest, most current information on proper application, clean-up, mixing and other specifications and warranties, cautions and disclaimers, please refer to the Sto Corp. website, www.stocorp.com.