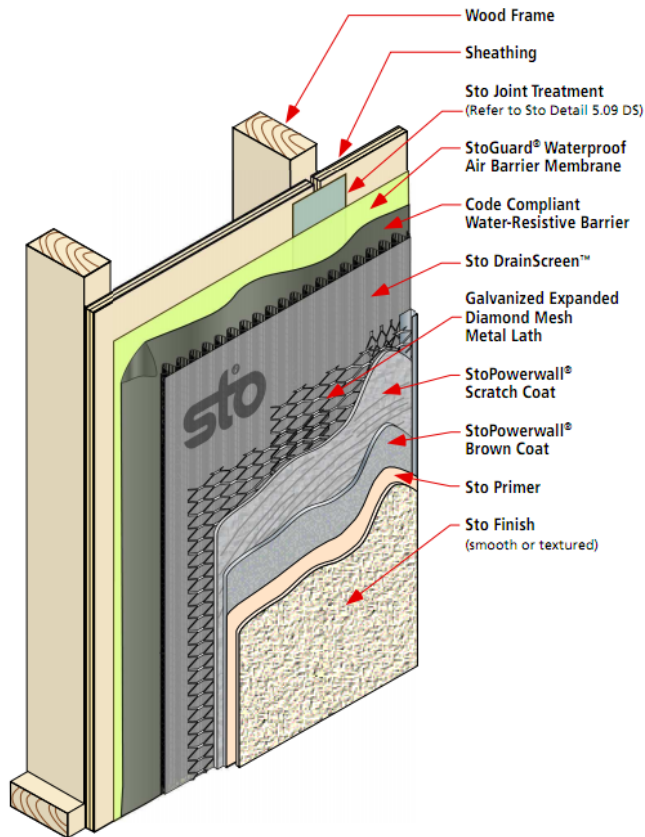


# StoPowerwall® NExT DrainScreen™

Advanced Stucco System with Water Resistant Barrier and Drainage



## System Description

StoPowerwall® NExT DrainScreen™ is an advanced, integrated stucco system that combines StoGuard® continuous waterproof air barriers, StoPowerwall® Stucco, Sto DrainScreen™ drainage mats, and integral decorative and protective finish options.

## Uses

StoPowerwall® NExT DrainScreen™ can be used on any project where superior durability, weather protection, and high-impact curb appeal are critical factors.

## Warranty

### StoPowerwall® NExT DrainScreen™

#### Limited Materials Warranty:

StoPowerwall NExT DS w/ Primer Powerflex Silco: 10 years  
 StoPowerwall NExT DS w/ Primer Powerwall: 7 years  
 StoPowerwall NExT DS w/ Primer Powercryn: 5 years

Features	Benefits
<b>Waterproof Air Barrier Protection</b>	StoGuard waterproof air barrier saves energy and protects against moisture intrusion by resisting air leakage and providing a waterproof layer of protection behind stucco
<b>Premium Acrylic, Elastomeric and Lotus-Effect Finishes and Smooth Coatings</b>	<ul style="list-style-type: none"> <li>Vapor permeable to minimize blistering, peeling and bubbling</li> <li>Excellent weatherability to resist wind-driven rain and UV light degradation</li> <li>Superior fade and UV resistance for long-lasting durability and color retention</li> <li>Superior resistance to algae, mildew and mold growth</li> </ul>
<b>High Compressive Strength</b>	Greater impact resistance for greater customer satisfaction
<b>High Tensile Strength</b>	Less cracking for greater in-service satisfaction
<b>Allows for Lower Weight per Square Foot than Field Mixed Stucco</b>	Lower and less expensive structural requirements
<b>Superior Weather Resistance</b>	<ul style="list-style-type: none"> <li>Does not absorb as much moisture as conventional stucco</li> <li>Resists moisture penetration</li> <li>Helps maintain appearance longer</li> </ul>
<b>Faster Installation</b>	<ul style="list-style-type: none"> <li>Less field mixing = less time and better consistency</li> <li>Can be applied in one application</li> <li>Lower installation costs</li> </ul>
<b>Design Flexibility</b>	Numerous color and finish texture choices
<b>Drainage</b>	Sto DrainScreen creates an air gap that promotes drainage and drying

# StoPowerwall® NEX T DrainScreen™

Advanced Stucco System with Water Resistant Barrier and Drainage

Properties		Limitations
<b>Weight</b>	< 7 psf (5/8 inch) < 11 psf (7/8 inch)	Do not install at temperatures below 40°F (4°C)
<b>Stucco Thickness</b>	5/8 - 7/8 inches	Some cracking and efflorescence are inherent in Portland cement stuccos. These are not product defects.
<b>Wind Load Resistance</b>	ICC ESR 2323	
<b>Fire Resistance</b>	ICC ESR 2323	Refer to specific component product bulletins and packaging for other limitations that apply in use, handling and storage of component materials.

Sustainable Design	
<b>LEED Credit Potential</b>	
<b>Energy and Atmosphere</b>	Prereq 2: Minimum Energy Performance
<b>Materials and Resources</b>	Credit 4: Recycled Content Credit 5: Regional Materials
<b>Indoor Environmental Quality</b>	Credit 4.1: Low Emitting Materials – Paints and Coatings
<b>Regulatory Compliance and Standards Testing</b>	
<b>ASHRAE 189.1</b>	Air Sealing Indoor Environmental Quality Energy Efficiency
<b>ASTM E 96</b>	Standard Test Methods for Water Vapor Transmission of Materials
<b>ASTM E 2178</b>	Standard Test Method for Air Permeance of Building Materials
<b>ASTM E 2357</b>	Standard Test Method for Determining Air Leakage of Air Barrier Assemblies
<b>EPA Method 24</b>	Low VOC Coatings Compliance
<b>ICC AC 11</b>	Acceptance Criteria for Cementitious Exterior Wall Coatings
<b>ICC AC 212</b>	Acceptance Criteria for Water-resistive Coatings used as Water-resistive Barriers over Exterior Sheathing
<b>SCAQMD Rule 1113</b>	Low VOC Coatings Compliance
<b>Approvals and Building Code Recognition</b>	
<b>2009 and 2012 IBC</b>	Complies with WRB and air barrier requirements. Components listed in ICC ESRs 2323 and 1233

**Sto Corp.**  
3800 Camp Creek Parkway  
Building 1400, Suite 120  
Atlanta, GA 30331

Tel: 404-346-3666  
Toll Free: 1-800-221-2397  
Fax: 404 346-3119

[www.stocorp.com](http://www.stocorp.com)

**SXXX-yyyyyy**  
Revision: 001  
Date: xx/2010



**Attention**

Sto products are intended for use by qualified professional contractors, not consumers, as a component of a larger construction assembly as specified by a qualified design professional, general contractor or builder. They should be installed in accordance with those specifications and Sto's instructions. Sto Corp. disclaims all, and assumes no, liability for on-site inspections, for its products applied improperly, or by unqualified persons or entities, or as part of an improperly designed or constructed building, for the nonperformance of adjacent building components or assemblies, or for other construction activities beyond Sto's control. Improper use of Sto products or use as part of an improperly designed or constructed larger assembly or building may result in serious damage to this product, and to the structure of the building or its components. **STO CORP. DISCLAIMS ALL WARRANTIES EXPRESS OR IMPLIED EXCEPT FOR EXPLICIT LIMITED WRITTEN WARRANTIES ISSUED TO AND ACCEPTED BY BUILDING OWNERS IN ACCORDANCE WITH STO'S WARRANTY PROGRAMS WHICH ARE SUBJECT TO CHANGE FROM TIME TO TIME.** For the fullest, most current information on proper application, clean-up, mixing and other specifications and warranties, cautions and disclaimers, please refer to the Sto Corp. website, [www.stocorp.com](http://www.stocorp.com).