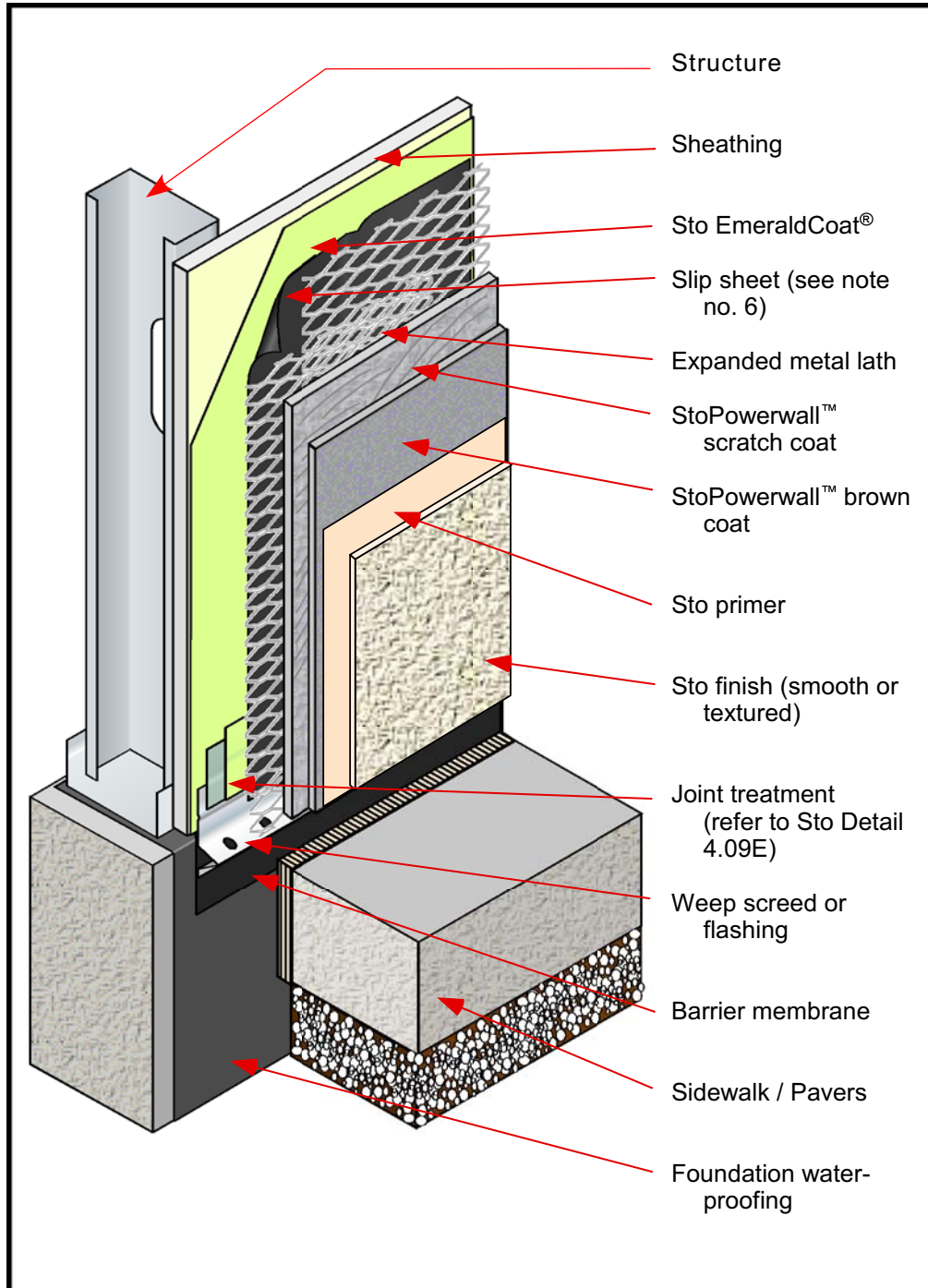


# Sto Powerwall™ NExT Termination at Grade: Sidewalk / Pavers

Detail No.: 4.10 E

Date: February 2009



## Notes:

- 1] Install barrier membrane at bottom of frame wall to provide protection from rain penetration below the stucco.
- 2] Install stucco weep screed or flashing to terminate minimum 1" (25 mm) below sill plate .
- 3] Provide minimum 2" (50 mm) clearance between nose of weep screed and sidewalk / paved surface. Increase distance when snow and ice may accumulate
- 4] Lap StoGuard™ onto weep screed to direct water to the exterior.
- 5] Provide water proofing at the foundation to protect the support structure from rising damp.
- 6] Provide slip sheet between Sto EmeraldCoat® and metal lath: minimum one layer building paper. Paper may be omitted when permitted by local code authority or when paper-backed stucco lath is used.

## Attention

Sto products are intended for use by qualified professional contractors, not consumers, as a component of a larger construction assembly as specified by a qualified design professional, general contractor or builder. They should be installed in accordance with those specifications and Sto's instructions. Sto Corp. disclaims all, and assumes no, liability for on-site inspections, for its products applied improperly, or by unqualified persons or entities, or as part of an improperly designed or constructed building, for the nonperformance of adjacent building components or assemblies, or for other construction activities beyond Sto's control. Improper use of Sto products or use as part of an improperly designed or constructed larger assembly or building may result in serious damage to Sto products, and to the structure of the building or its components. **STO CORP. DISCLAIMS ALL WARRANTIES EXPRESS OR IMPLIED EXCEPT FOR EXPLICIT LIMITED WRITTEN WARRANTIES ISSUED TO AND ACCEPTED BY BUILDING OWNERS IN ACCORDANCE WITH STO'S WARRANTY PROGRAMS WHICH ARE SUBJECT TO CHANGE FROM TIME TO TIME.** For the fullest, most current information on proper application, clean-up, mixing and other specifications and warranties, cautions and disclaimers, please refer to the Sto Corp. website, [www.stocorp.com](http://www.stocorp.com).

[www.stocorp.com](http://www.stocorp.com)